

Instrument #: 2018-3482
 12/28/2018 09:39:10 AM Total Pages: 1
 ZSC SECTION CORNER CERTIFICATE
 Recording Fee: \$7.00 Transfer Tax: \$0
 Sheri L. Jones, Recorder, Jones County Iowa



RETURN TO &

PREPARED BY: LEO P. BONIFAZI SCHNOOR-BONIFAZI ENGINEERING & SURVEYING LC, 431 FIFTH AVENUE SW, CEDAR RAPIDS, IA 52404 319-298-8888

UNITED STATES PUBLIC LAND SURVEY CORNER CERTIFICATE

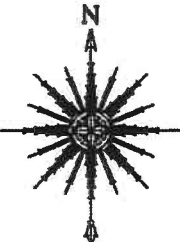
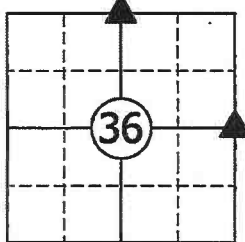
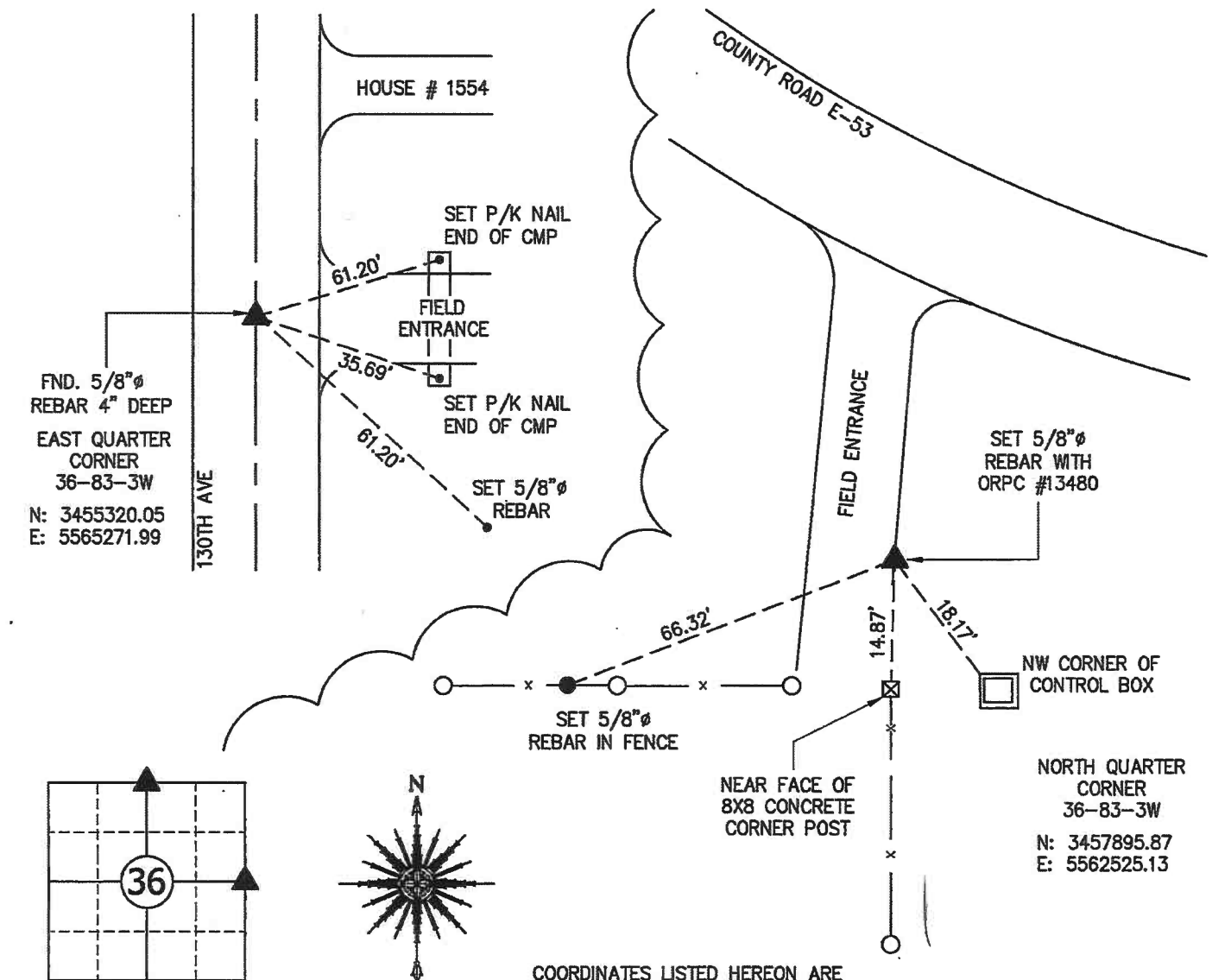
Land Survey Monuments Situated in Section 36, Township 83 North, Range 3 West of the Fifth Principal Meridian, JONES County, Iowa.

Reason for filling: a. No certificate of record found. b. Monument or ties found differ from record. c. Replaced section corner.

EAST QUARTER CORNER - NO CORNER CERTIFICATE FOUND AT COUNTY RECORDER'S OR ENGINEER'S OFFICE. FOUND A 5/8"Ø REBAR USING ACQUISITION PLAT PARCEL #5 FROM JONES COUNTY ENGINEERING. ACCEPTED FOUND REBAR AND SET REFERENCE TIES.

NORTH QUARTER CORNER - NO CORNER CERTIFICATE FOUND AT COUNTY RECORDER'S OR ENGINEER'S OFFICE. SET A 5/8"Ø REBAR WITH ORANGE PLASTIC CAP #13480 USING A NON-CERTIFIED COUNTY ENGINEERING CERTIFICATE MADE FROM NOTES TAKEN FROM THE SMALL INDEX CARDS DATED 1951 AS WELL AS REMAINING FENCE EVIDENCE. THE INTERSECTION OF HWY 38 AND COUNTY E-53 WAS REDESIGNED, RESULTING IN THE DESTRUCTION OF THE ORIGINAL 4X4 CONCRETE MONUMENT THE COUNTY SET IN 1951.

VARIOUS SURVEYS MENTION THIS CORNER BUT DO NOT GIVE BEARING AND DISTANCE TO IT. SET REFERENCE TIES AS SHOWN.



COORDINATES LISTED HEREON ARE DERIVED FROM THE IOWA DEPARTMENT OF TRANSPORTATION REAL TIME NETWORK COLLECTED IN THE NAD83(2011) (Epoch 2010.0000) NETWORK REF FRAME AND ARE PROVIDED FOR USE IN RECOVERY OF MONUMENT ONLY.

CORNERS TO BE INDEXED
 EAST QUARTER CORNER 36-83-3W
 NORTH QUARTER CORNER 36-83-3W
 SURVEY 8/23/17

JOB:	17112
DRAWN:	D. THOMA
NOT TO SCALE	
DATE:	12/27/2017



I HEREBY CERTIFY THAT THIS LAND SURVEYING DOCUMENT WAS PREPARED AND THE RELATED SURVEY WORK WAS PERFORMED BY ME OR UNDER MY DIRECT PERSONAL SUPERVISION AND THAT I AM A DULY LICENSED PROFESSIONAL LAND SURVEYOR UNDER THE LAWS OF THE STATE OF IOWA.

SIGNATURE: *Leo P. Bonifazi* DATE: 12/21/18
 LEO P. BONIFAZI
 LICENSE NO. 13480
 SHEETS COVERED BY THIS SEAL: THIS SHEET ONLY
 MY LICENSE RENEWAL DATE IS DECEMBER 31, 2019

SCHNOOR-BONIFAZI ENGINEERING & SURVEYING, LC
 431 FIFTH AVENUE SW
 CEDAR RAPIDS, IA 52404
 (319) 298-8888 (PHONE)
 s-b-engineering.com



UNITED STATES PUBLIC LAND SURVEY CORNER CERTIFICATE

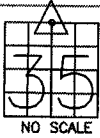
LAND SURVEY MONUMENTS SITUATED IN SECTION 35, TOWNSHIP 83
NORTH, RANGE 3 WEST OF THE 5TH P.M., JONES COUNTY, IOWA

CORNERS TO BE INDEXED

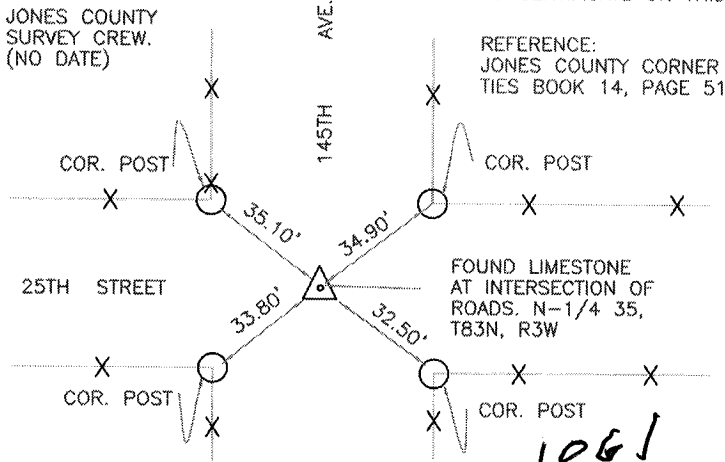
CORNER SECTION TOWNSHIP RANGE
N-1/4 35 83N 3W

OFFICE FILE NO.

83335c_111803



NO CERTIFICATE ON THIS.



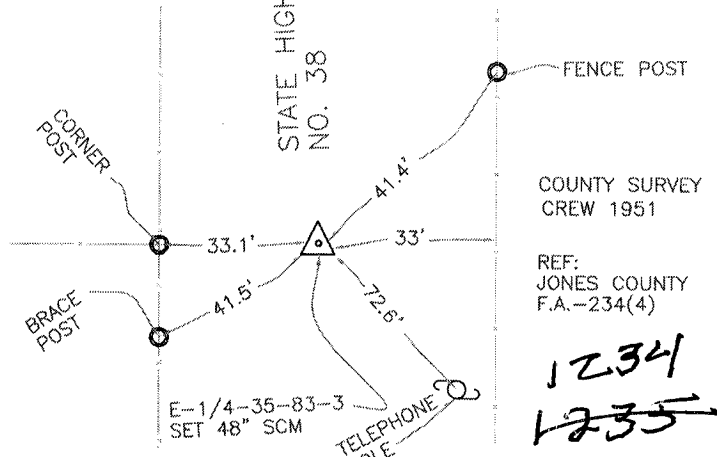
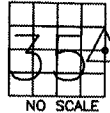
PREVIOUSLY RECORDED IN BOOK N/A, PAGE N/A
MONUMENT DESCRIPTION AND HOW ESTABLISHED FOUND
10"x12"x6" LIMESTONE 18" BELOW ROAD SURFACE. TIED OUT AS
INDICATED. NORTH QUARTER CORNER SECTION 35, TOWNSHIP 83
NORTH, RANGE 3 WEST OF THE 5TH PRINCIPAL MERIDIAN, JONES
COUNTY, IOWA

CORNERS TO BE INDEXED

CORNER SECTION TOWNSHIP RANGE
E-1/4 35 83N 3W

OFFICE FILE NO.

83335o_111803



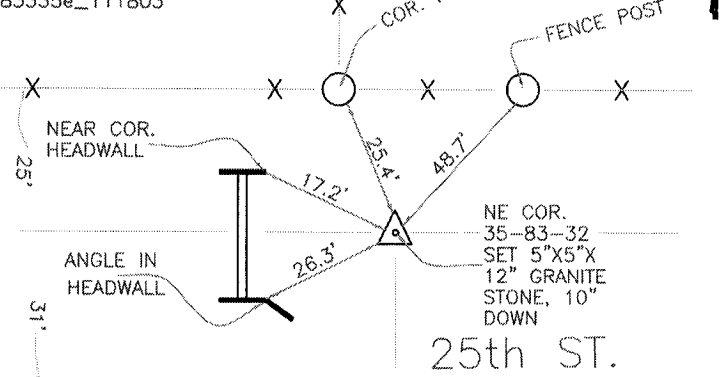
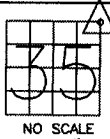
PREVIOUSLY RECORDED IN BOOK _____, PAGE _____
MONUMENT DESCRIPTION AND HOW ESTABLISHED 1951
COUNTY SURVEY CREW SET 48" STANDARD CONCRETE MONUMENT
IN THE POSITION INDICATED AND SET TIES. EAST QUARTER CORNER
SECTION 35, TOWNSHIP 83 NORTH, RANGE 3 WEST OF THE 5TH
PRINCIPAL MERIDIAN, JONES COUNTY, IOWA.

CORNERS TO BE INDEXED

CORNER SECTION TOWNSHIP RANGE
NORTHEAST 35 83N 3W

OFFICE FILE NO.

83335e_111803



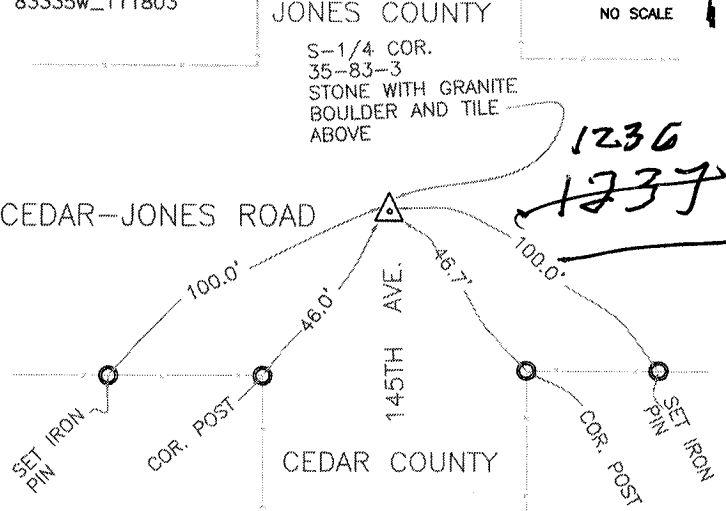
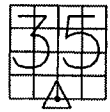
COUNTY SURVEY CREW 1951
REF: JONES COUNTY F.A.-234(4)
PREVIOUSLY RECORDED IN BOOK _____, PAGE _____
MONUMENT DESCRIPTION AND HOW ESTABLISHED 1951
COUNTY SURVEY CREW SET 5"x5"x12" GRANITE STONE 10" BELOW
SURFACE IN THE POSITION INDICATED AND SET TIES. NORTHEAST
CORNER SECTION 35, TOWNSHIP 83 NORTH, RANGE 3 WEST OF THE
5TH PRINCIPAL MERIDIAN, JONES COUNTY, IOWA.

CORNERS TO BE INDEXED

CORNER SECTION TOWNSHIP RANGE
S-1/4 35 83N 3W

OFFICE FILE NO.

83335w_111803



PREVIOUSLY RECORDED IN BOOK _____, PAGE _____
MONUMENT DESCRIPTION AND HOW ESTABLISHED THIS
INFORMATION FROM CEDAR COUNTY WITH NO DATE. STONE WITH
GRANITE BOULDER AND TILE ABOVE ALONG WITH TIES INDICATED
ON CARD. DATE PROBABLY (1951) SOUTH QUARTER CORNER SECTION
35, TOWNSHIP 83 NORTH, RANGE 3 WEST OF THE 5TH PRINCIPAL
MERIDIAN, JONES COUNTY, IOWA.

I hereby declare that this plat, survey or report was made by me or under my direct personal supervision and that I am a duly registered Land Surveyor under the laws of the State of Iowa.

Signed:

SEAL

JONES COUNTY
ENGINEER'S OFFICE

19501 HWY. 64,
ANAMOSA, IOWA,
52205 (319)462-3785