

Instrument #: 2018-3482  
 12/28/2018 09:39:10 AM Total Pages: 1  
 ZSC SECTION CORNER CERTIFICATE  
 Recording Fee: \$7.00 Transfer Tax: \$0  
 Sheri L. Jones, Recorder, Jones County Iowa



RETURN TO &

PREPARED BY: LEO P. BONIFAZI SCHNOOR-BONIFAZI ENGINEERING & SURVEYING LC, 431 FIFTH AVENUE SW, CEDAR RAPIDS, IA 52404 319-298-8888

**UNITED STATES PUBLIC LAND SURVEY CORNER CERTIFICATE**

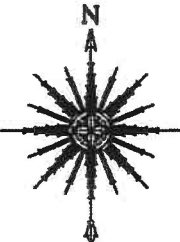
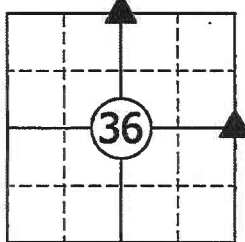
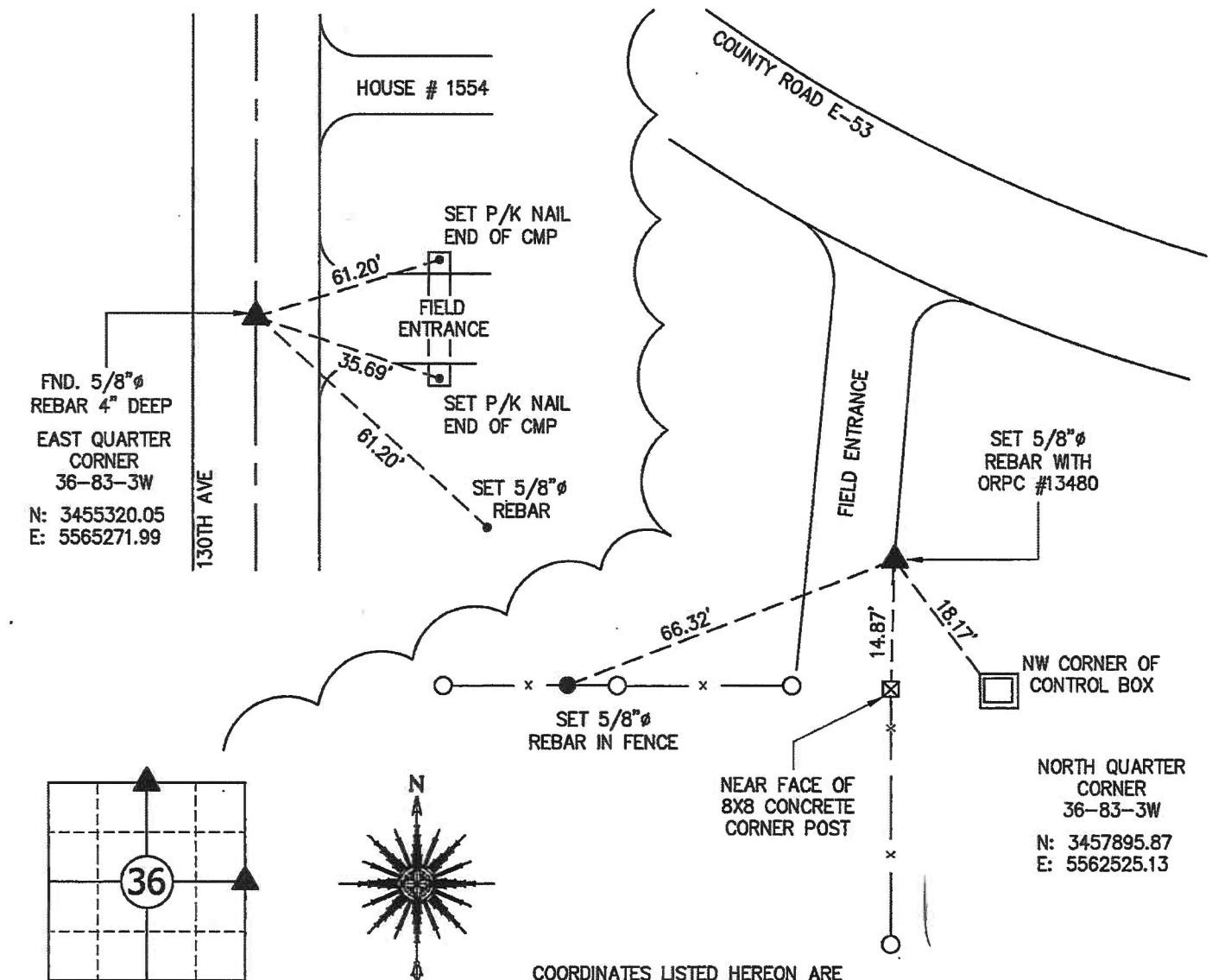
Land Survey Monuments Situated in Section 36, Township 83 North, Range 3 West of the Fifth Principal Meridian, JONES County, Iowa.

Reason for filling:  a. No certificate of record found.  b. Monument or ties found differ from record.  c. Replaced section corner.

**EAST QUARTER CORNER** - NO CORNER CERTIFICATE FOUND AT COUNTY RECORDER'S OR ENGINEER'S OFFICE. FOUND A 5/8"Ø REBAR USING ACQUISITION PLAT PARCEL #5 FROM JONES COUNTY ENGINEERING. ACCEPTED FOUND REBAR AND SET REFERENCE TIES.

**NORTH QUARTER CORNER** - NO CORNER CERTIFICATE FOUND AT COUNTY RECORDER'S OR ENGINEER'S OFFICE. SET A 5/8"Ø REBAR WITH ORANGE PLASTIC CAP #13480 USING A NON-CERTIFIED COUNTY ENGINEERING CERTIFICATE MADE FROM NOTES TAKEN FROM THE SMALL INDEX CARDS DATED 1951 AS WELL AS REMAINING FENCE EVIDENCE. THE INTERSECTION OF HWY 38 AND COUNTY E-53 WAS REDESIGNED, RESULTING IN THE DESTRUCTION OF THE ORIGINAL 4X4 CONCRETE MONUMENT THE COUNTY SET IN 1951.

VARIOUS SURVEYS MENTION THIS CORNER BUT DO NOT GIVE BEARING AND DISTANCE TO IT. SET REFERENCE TIES AS SHOWN.



CORNERS TO BE INDEXED

EAST QUARTER CORNER 36-83-3W  
 NORTH QUARTER CORNER 36-83-3W  
 SURVEY 8/23/17

COORDINATES LISTED HEREON ARE DERIVED FROM THE IOWA DEPARTMENT OF TRANSPORTATION REAL TIME NETWORK COLLECTED IN THE NAD83(2011) (Epoch 2010.0000) NETWORK REF FRAME AND ARE PROVIDED FOR USE IN RECOVERY OF MONUMENT ONLY.

JOB:	17112
DRAWN:	D. THOMA
NOT TO SCALE	
DATE:	12/27/2017



I HEREBY CERTIFY THAT THIS LAND SURVEYING DOCUMENT WAS PREPARED AND THE RELATED SURVEY WORK WAS PERFORMED BY ME OR UNDER MY DIRECT PERSONAL SUPERVISION AND THAT I AM A DULY LICENSED PROFESSIONAL LAND SURVEYOR UNDER THE LAWS OF THE STATE OF IOWA.

SIGNATURE: *Leo P. Bonifazi* DATE: 12/21/18  
 LEO P. BONIFAZI  
 LICENSE NO. 13480  
 SHEETS COVERED BY THIS SEAL: THIS SHEET ONLY

MY LICENSE RENEWAL DATE IS DECEMBER 31, 2019

SCHNOOR-BONIFAZI ENGINEERING & SURVEYING, LC  
 431 FIFTH AVENUE SW  
 CEDAR RAPIDS, IA 52404  
 (319) 298-8888 (PHONE)  
 s-b-engineering.com

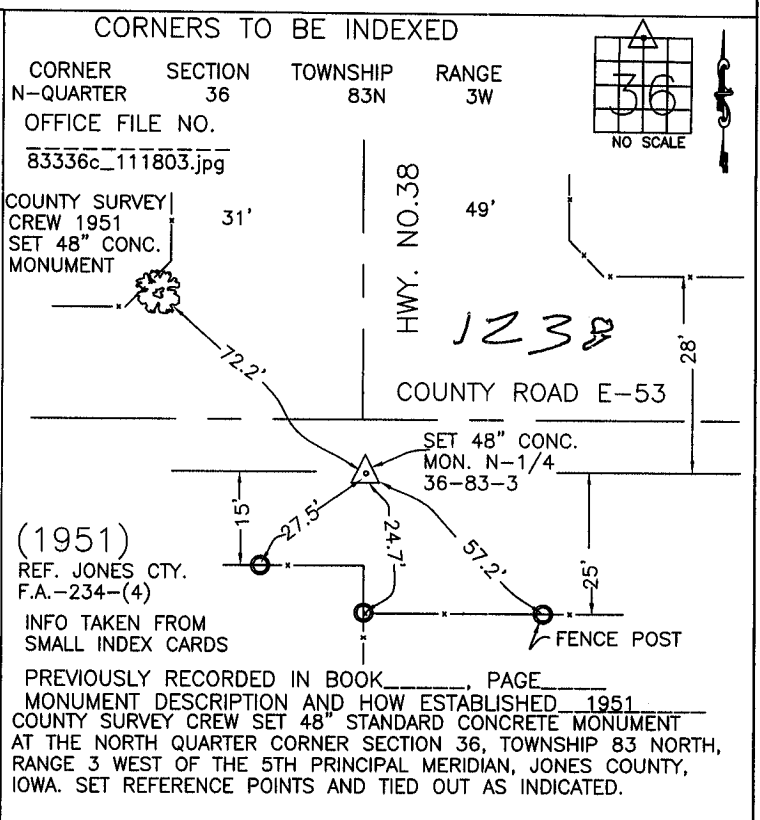
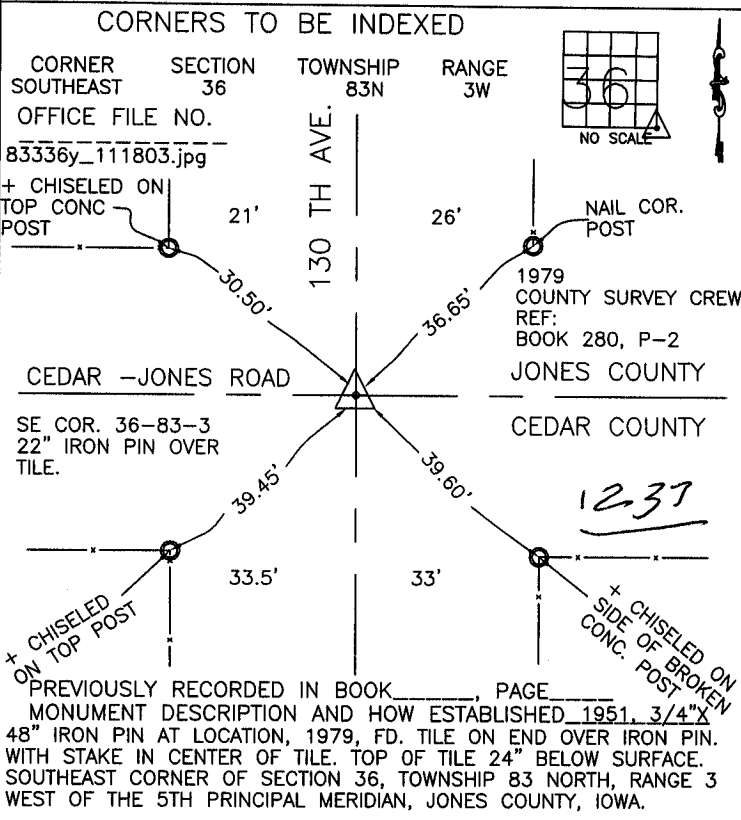


# THIS IS NOT A CERTIFICATION

JONES COUNTY ENGINEER'S OFFICE, 19501 HWY. 64, ANAMOSA, IOWA, 52205 (319)462-3785

## UNITED STATES PUBLIC LAND SURVEY CORNER CERTIFICATE

LAND SURVEY MONUMENTS SITUATED IN SECTION 36, TOWNSHIP 83  
NORTH, RANGE 3 WEST OF THE 5TH P.M., JONES COUNTY, IOWA



**CORNERS TO BE INDEXED**

CORNER	SECTION	TOWNSHIP	RANGE

OFFICE FILE NO. \_\_\_\_\_

PREVIOUSLY RECORDED IN BOOK \_\_\_\_\_, PAGE \_\_\_\_\_  
MONUMENT DESCRIPTION AND HOW ESTABLISHED \_\_\_\_\_

**CORNERS TO BE INDEXED**

CORNER	SECTION	TOWNSHIP	RANGE

OFFICE FILE NO. \_\_\_\_\_

PREVIOUSLY RECORDED IN BOOK \_\_\_\_\_, PAGE \_\_\_\_\_  
MONUMENT DESCRIPTION AND HOW ESTABLISHED \_\_\_\_\_

~~I hereby declare that this plat, survey or report was made by me or under my direct personal supervision and that I am a duly registered Land Surveyor under the laws of the State of Iowa.~~

Signed: \_\_\_\_\_

SEAL

JONES COUNTY  
ENGINEER'S OFFICE

19501 HWY. 64,  
ANAMOSA, IOWA,  
52205 (319)462-3785

*a*