

2002 2523

FILED  
RECORDERS OFFICE  
JONES COUNTY IOWA

2002 JL 11 AM 9:07

MARIE KRUTZFIELD  
RECORDER NO FEE

J.D. Tjepkes, LS. JONES COUNTY ENGINEER'S OFFICE, 19501 HWY. 64, ANAMOSA, IOWA, 52205 (319)462-3785

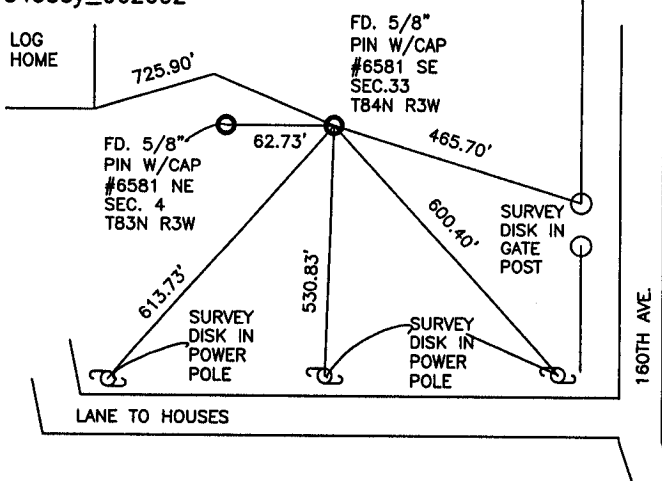
# UNITED STATES PUBLIC LAND SURVEY CORNER CERTIFICATE

LAND SURVEY MONUMENTS SITUATED IN SECTION 33, TOWNSHIP 84  
NORTH, RANGE 3 WEST OF THE 5TH P.M., JONES COUNTY, IOWA

### CORNERS TO BE INDEXED

CORNER SECTION TOWNSHIP RANGE  
SE 33 84N 3W

OFFICE FILE NO. 84333y\_062602

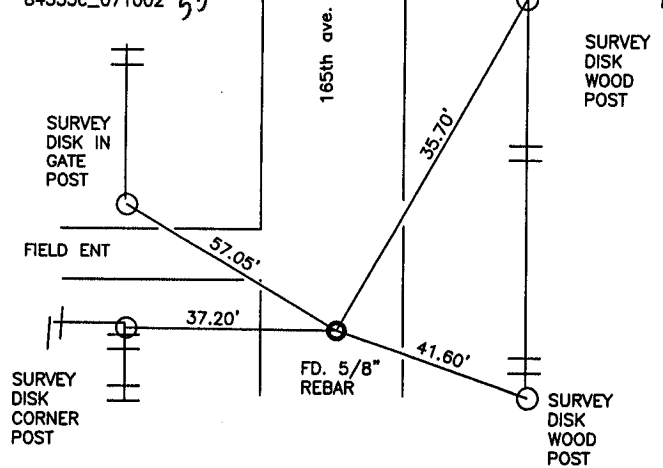


PREVIOUSLY RECORDED IN BOOK NA, PAGE NA  
MONUMENT DESCRIPTION AND HOW ESTABLISHED \_\_\_\_\_  
FROM TIES RECORDED IN JONES CO. ENGINEER'S OFFICE FD. 5/8" IRON  
PIN W/CAP #6581 BURIED IN FIELD. RETIED AS INDICATED. FIELD WORK  
COMPLETED 5-14-02  
FIELD BK. #361 P. 7

### CORNERS TO BE INDEXED

CORNER SECTION TOWNSHIP RANGE  
N1/4 33 84N 3W

OFFICE FILE NO. 84333c\_071002

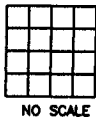


PREVIOUSLY RECORDED IN BOOK NA, PAGE NA  
MONUMENT DESCRIPTION AND HOW ESTABLISHED \_\_\_\_\_  
FROM TIES RECORDED IN JONES CO. ENGINEER'S OFFICE FD. 5/8" IRON  
PIN W/ LS CAP #6581 IN ROAD. RETIED AS INDICATED. FIELD WORK  
COMPLETED 5-1-02  
FIELD NOTES BK. #361 P. 5

### CORNERS TO BE INDEXED

CORNER SECTION TOWNSHIP RANGE

OFFICE FILE NO. \_\_\_\_\_

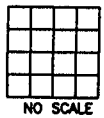


PREVIOUSLY RECORDED IN BOOK \_\_\_\_\_, PAGE \_\_\_\_\_  
MONUMENT DESCRIPTION AND HOW ESTABLISHED \_\_\_\_\_

### CORNERS TO BE INDEXED

CORNER SECTION TOWNSHIP RANGE

OFFICE FILE NO. \_\_\_\_\_

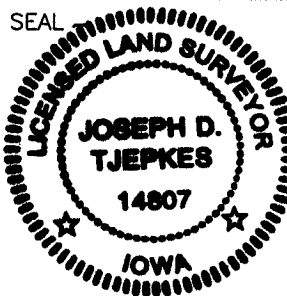


PREVIOUSLY RECORDED IN BOOK \_\_\_\_\_, PAGE \_\_\_\_\_  
MONUMENT DESCRIPTION AND HOW ESTABLISHED \_\_\_\_\_

I hereby declare that this plat, survey or report was made by me or under my direct personal supervision and that I am a duly registered Land Surveyor under the laws of the State of Iowa.

Signed: \_\_\_\_\_

*Joseph D. Tjepkes* 7.10.02  
Joseph D. Tjepkes L.S. Iowa Reg. No. 14807  
My Registration Renewal Date is December 31, 2002



J.D. Tjepkes LS 14807  
JONES COUNTY  
ENGINEER'S OFFICE

19501 HWY. 64,  
ANAMOSA, IOWA,  
52205 (319)462-3785

2002 2298

FILED  
RECORDERS OFFICE  
JONES COUNTY IOWA

02 JUN 24 PM 2:13

MARIE KRUTZFIELD  
RECORDER NO FEE

J.D. TJEPKES, LS. JONES COUNTY ENGINEER'S OFFICE, 19501 HWY. 64, ANAMOSA, IOWA, 52205 (319)462-3785

# UNITED STATES PUBLIC LAND SURVEY CORNER CERTIFICATE

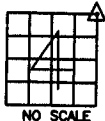
LAND SURVEY MONUMENTS SITUATED IN SECTION 4, TOWNSHIP 83  
NORTH, RANGE 3 WEST OF THE 5TH P.M., JONES COUNTY, IOWA

### CORNERS TO BE INDEXED

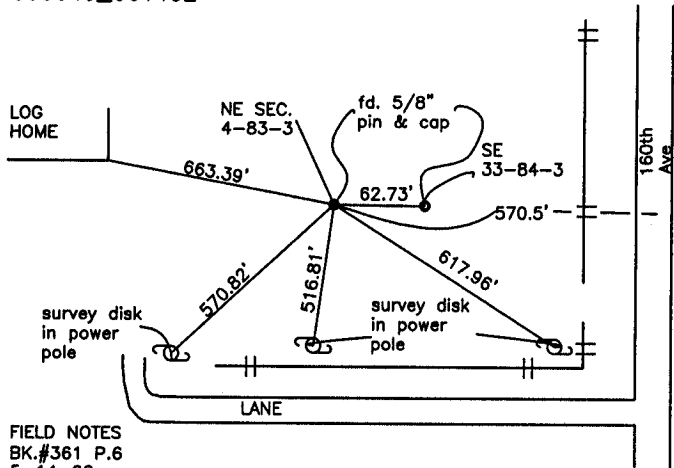
CORNER SECTION TOWNSHIP RANGE  
NE 4 83 3

OFFICE FILE NO.

83304e\_061402



NO SCALE



FIELD NOTES  
BK.#361 P.6  
5-14-02

PREVIOUSLY RECORDED IN JONES COUNTY ENGINEER'S OFFICE  
MONUMENT DESCRIPTION AND HOW ESTABLISHED

NE CORNER SEC. 4-83-3 FOUND 5/8" IRON PIN W/CAP  
#6581 (DILLON) BURIED 1' IN SOUTH SLOPE OF BIG HILL.  
RETIED AS INDICATED.

### CORNERS TO BE INDEXED

CORNER SECTION TOWNSHIP RANGE

OFFICE FILE NO.



NO SCALE

### CORNERS TO BE INDEXED

CORNER SECTION TOWNSHIP RANGE

OFFICE FILE NO.



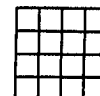
NO SCALE

PREVIOUSLY RECORDED IN BOOK \_\_\_\_\_, PAGE \_\_\_\_\_  
MONUMENT DESCRIPTION AND HOW ESTABLISHED \_\_\_\_\_

### CORNERS TO BE INDEXED

CORNER SECTION TOWNSHIP RANGE

OFFICE FILE NO.



NO SCALE

PREVIOUSLY RECORDED IN BOOK \_\_\_\_\_, PAGE \_\_\_\_\_  
MONUMENT DESCRIPTION AND HOW ESTABLISHED \_\_\_\_\_

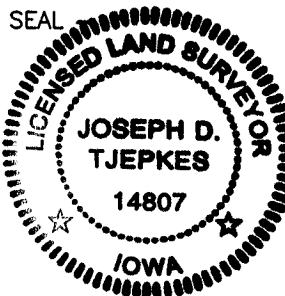
PREVIOUSLY RECORDED IN BOOK \_\_\_\_\_, PAGE \_\_\_\_\_  
MONUMENT DESCRIPTION AND HOW ESTABLISHED \_\_\_\_\_

I hereby declare that this plat, survey or report was made by me or under my direct personal supervision and that I am a duly registered Land Surveyor under the laws of the State of Iowa.

Signed:

*Joseph D. Tjepkes* 6-24-02

Joseph D. Tjepkes L.S. Iowa Reg. No. 14807  
My Registration Renewal Date is December 31, 2002



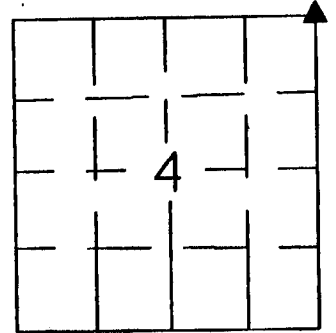
J.D. TJEPKES LS 14807  
JONES COUNTY  
ENGINEER'S OFFICE

19501 HWY. 64,  
ANAMOSA, IOWA,  
52205 (319)462-3785

# United States Public Land Survey Corner Certificate

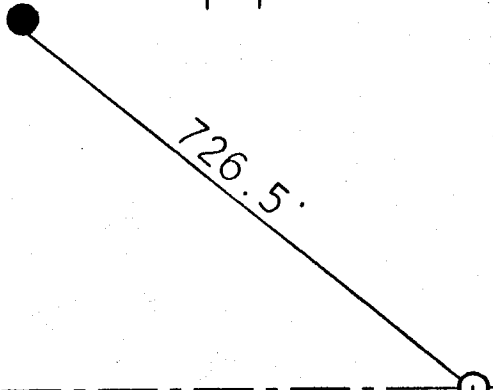
Land survey corner in Section 4 Township 83 North  
Range 3 West of the 5th Principal Meridian  
Jones County, Iowa.

No Scale



SECTION

End Iron pipe



726.5

ON CARD 11-22-93 M.S.

NE Corner  
Sec 4-83-3  
Set I.P. 10" deep

516.6

622.6

Powerpole



Cornerpost



### Certification

I hereby certify that this plot and survey was made by me or under my direct supervision and that I am a duly Registered Land Surveyor under the laws of the State of Iowa.



Harold E. Dillon  
Harold E. Dillon Reg.#6581

8/20/93  
date