

COPY

☐☐
 Jones County Marie Krutzfield
 Fee Book 2011 1110
 04/29/2011 @1126AM # Pages 1
 ZSC SEC COR CERT
 Total Fees: \$9.00

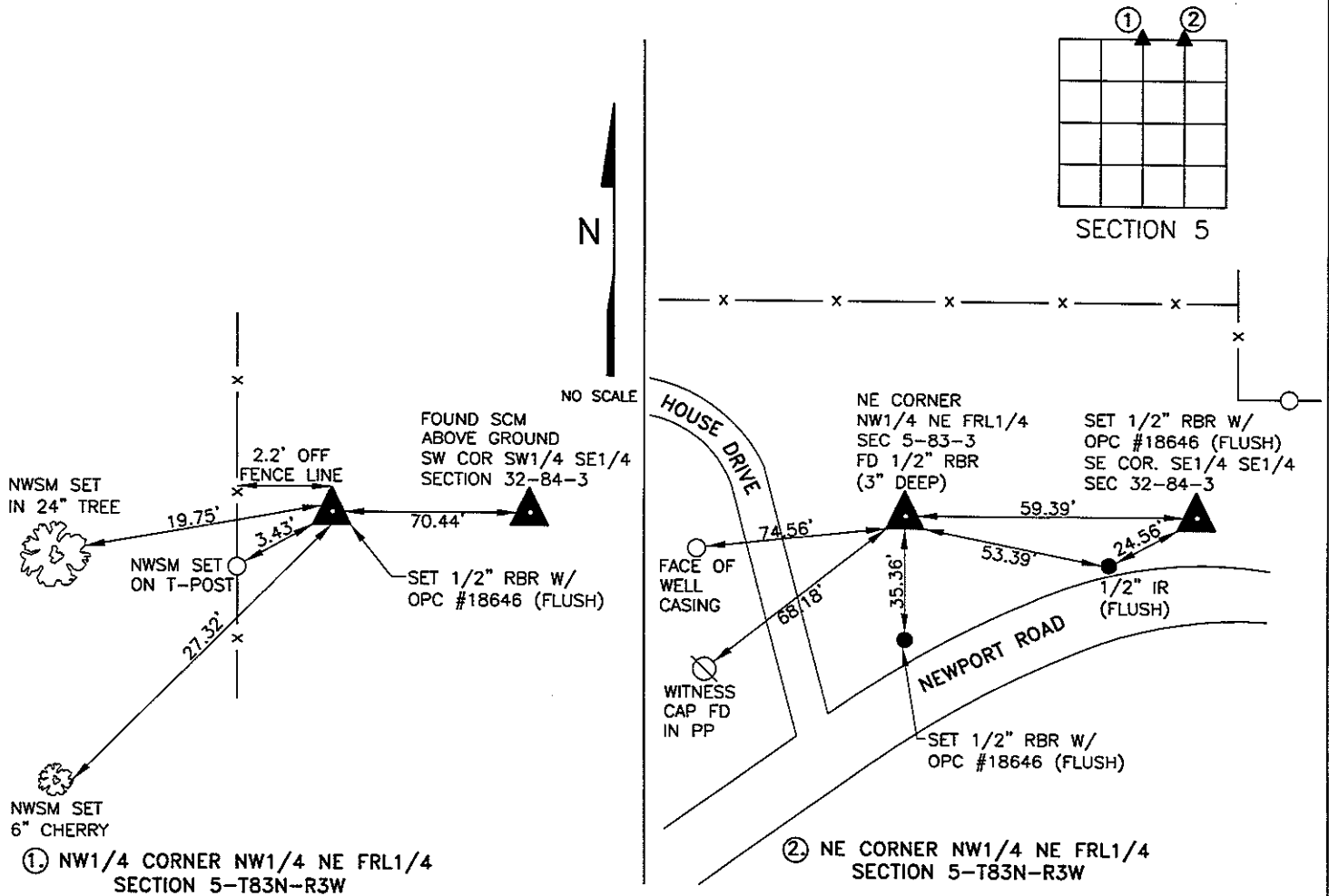
Prepared By: R. Rodney Klien, L.S. #18646 Anderson-Bogert Engineers & Surveyors, Inc. 4001 River Ridge Dr. N.E. Cedar Rapids, Iowa 52402 Phone: (319) 377-4629

UNITED STATES PUBLIC LAND SURVEY CORNER CERTIFICATE OF

Land Survey Monuments situated in Section 5, Township 83-N, Range 3-W, of the Fifth Principal Meridian, JONES County, Iowa.
 Previously recorded in NOT PREVIOUSLY RECORDED in County Recorders Office.

Monument Description and Remarks: ① SET 1/2" RBR W/OPC #18646 BASED UPON ANDERSON CONSULTANT, INC. SURVEY NOTES AND FOUND CORNERS ALONG THE WEST LINE OF SCHAEFNER'S ADDITION. SAID SURVEY NOTES REFERRED TO SCM FOUND 70.4' TO THE EAST OF CORNER RE-ESTABLISHED FURTHER CONFIRMING SAID CORNER. ② FND 1/2" RBR 3" DEEP AS MONUMENTED PER FINAL PLAT OF SCHAEFNER'S ADDITION. CORNERS NOT PREVIOUSLY RECORDED.

PLAN - VIEW



*NWSM= NAIL WITH SURVEY MARKER

I hereby certify that this land surveying document was prepared and the related survey work was performed by me or under my direct personal supervision and that I am a duly licensed land surveyor under the laws of the State of Iowa

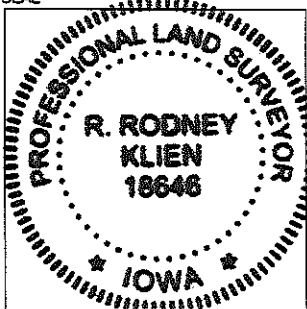
Signature: R. Rodney Klien Date: 4-26-11
 Printed or typed name: R. Rodney Klien

License number: #18646

My license renewal date is December 31, 2011

Pages or sheets covered by this seal: 1 of 1

SEAL



ANDERSON-BOGERT
 Engineers & Surveyors, Inc.
 4001 River Ridge Drive N.E. Cedar Rapids, Iowa 52402
 Phone: (319) 377-4629

List Corners to be Indexed			
Corners	Section	Twp	Range
NW COR NW1/4 NE FRL1/4	5	83N	3W
NE CORNER NW1/4 NE FRL1/4	5	83N	3W

- THERE IS NO CERTIFICATE FOR THE CORNER ON FILE WITH THE RECORDER OF THE COUNTY IN WHICH THE CORNER IS LOCATED.
- THE SURVEYOR IN RESPONSIBLE CHARGE OF THE LAND SURVEYING ACCEPTS A CORNER POSITION WHICH DIFFERS FROM THAT SHOWN IN THE PUBLIC RECORDS OF THE COUNTY IN WHICH THE CORNER IS LOCATED.
- THE CORNER MONUMENT IS REPLACED OR MODIFIED IN ANY WAY.
- THE REFERENCE TIES IN AN EXISTING PUBLIC RECORD ARE INCORRECT OR MISSING.

THIS IS NOT A CERTIFICATION

JONES COUNTY ENGINEER'S OFFICE, 19501 HWY. 64, ANAMOSA, IOWA, 52205 (319)462-3785

UNITED STATES PUBLIC LAND SURVEY CORNER CERTIFICATE

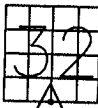
LAND SURVEY MONUMENTS SITUATED IN SECTION 32, TOWNSHIP 84
NORTH, RANGE 3 WEST OF THE 5TH P.M., JONES COUNTY, IOWA

CORNERS TO BE INDEXED

CORNER SECTION TOWNSHIP RANGE
S-QUARTER 32 84N 3W

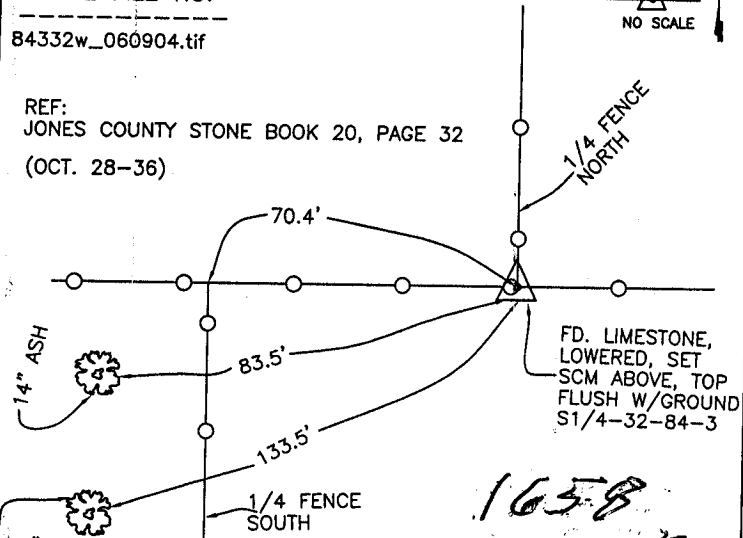
OFFICE FILE NO.

84332w_060904.tif



NO SCALE

REF:
JONES COUNTY STONE BOOK 20, PAGE 32
(OCT. 28-36)

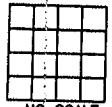


PREVIOUSLY RECORDED IN BOOK _____, PAGE _____
MONUMENT DESCRIPTION AND HOW ESTABLISHED FOUND
LIMESTONE AGAINST W-SIDE OF COR. POST, LOWERED STONE, SET
STANDARD CONCRETE MONUMENT ABOVE, TOP FLUSH WITH GROUND.
SOUTH QUARTER CORNER, SECTION 32, TOWNSHIP 84 NORTH, RANGE
3 WEST OF THE 5TH PRINCIPAL MERIDIAN, JONES COUNTY, IOWA.

CORNERS TO BE INDEXED

CORNER SECTION TOWNSHIP RANGE

OFFICE FILE NO.



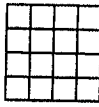
NO SCALE

PREVIOUSLY RECORDED IN BOOK _____, PAGE _____
MONUMENT DESCRIPTION AND HOW ESTABLISHED _____

CORNERS TO BE INDEXED

CORNER SECTION TOWNSHIP RANGE

OFFICE FILE NO.



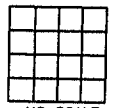
NO SCALE

PREVIOUSLY RECORDED IN BOOK _____, PAGE _____
MONUMENT DESCRIPTION AND HOW ESTABLISHED _____

CORNERS TO BE INDEXED

CORNER SECTION TOWNSHIP RANGE

OFFICE FILE NO.



NO SCALE

PREVIOUSLY RECORDED IN BOOK _____, PAGE _____
MONUMENT DESCRIPTION AND HOW ESTABLISHED _____

~~I hereby declare that this plat, survey or report was made by me or under my direct personal supervision and that I am a duly registered Land Surveyor under the laws of the State of Iowa.~~

Signed: _____

SEAL

JONES COUNTY
ENGINEER'S OFFICE

19501 HWY. 64,
ANAMOSA, IOWA,
52205 (319)462-3785

A1