

2000 0578
 FILED
 RECORDERS OFFICE
 JONES COUNTY IOWA

Rome

00 FEB 17 AM 11:05

MARIE KRUTZFIELD
 RECORDER 6.00pl

CLARENCE J. WALTON, BRAIN ENGINEERING, INC., 777 10TH STREET, MARION, IOWA 52302 PH. (319) 373-1318

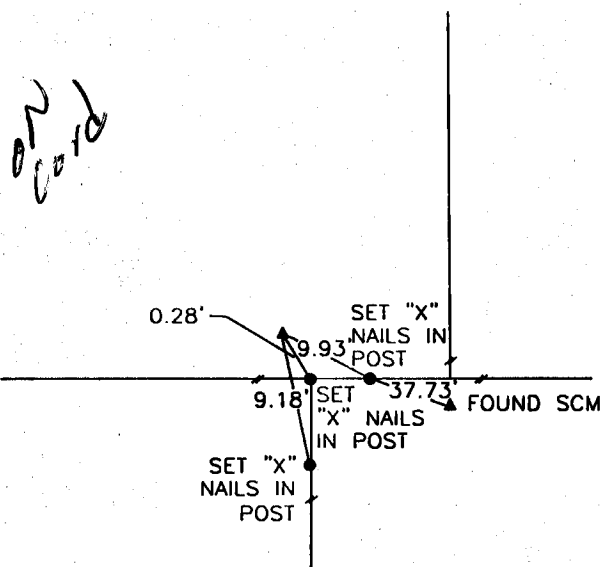
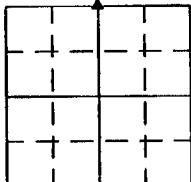
UNITED STATES PUBLIC LAND SURVEY CORNER CERTIFICATE

LAND SURVEY MONUMENTS SITUATED IN SECTION 6, TOWNSHIP 83 NORTH
 RANGE 3 WEST OF THE 5TH P.M., _____ JONES _____ COUNTY, IOWA.

NO SCALE



N 1/4

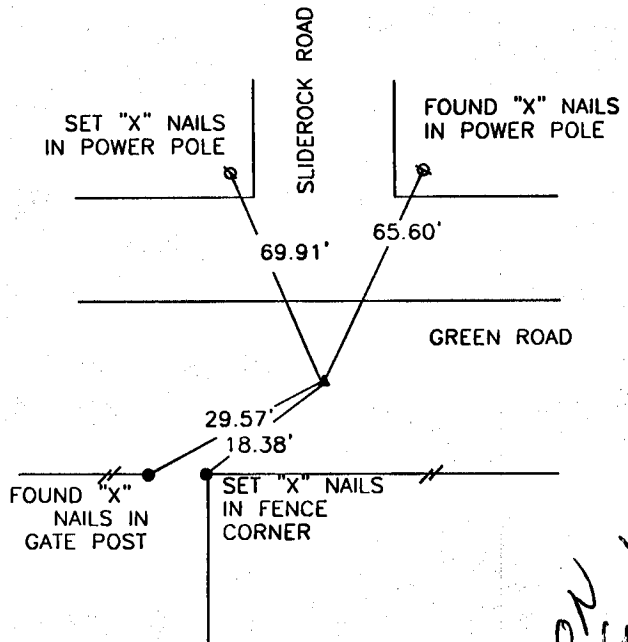
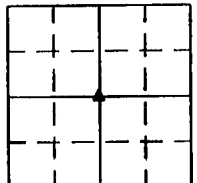


ON Card

NO SCALE



CENTER



ON Card

PREVIOUSLY RECORDED IN BOOK _____ PAGE _____

MONUMENT DESCRIPTION AND HOW ESTABLISHED _____
 FOUND SCM 2" ABOVE GROUND.

PREVIOUSLY RECORDED IN BOOK 341 PAGE 46

MONUMENT DESCRIPTION AND HOW ESTABLISHED _____
 FOUND 1/2" REBAR



I hereby certify that this land surveying document and the related survey work was performed by me or under my direct personal supervision and that I am a duly licensed Land Surveyor under the laws of the State of Iowa.
 Signed *Clarence J. Walton* Date 7/14/00
 Clarence J. Walton, L.S.
 My License Renewal Date is December 31, 2001
 License Number 11310
 Pages or sheets covered by this seal:

CORNER	SECTION	TOWNSHIP	RANGE
N 1/4	6	T83N	R3W
CENTER	6	T83N	R3W

BRAIN ENGINEERING, INC.

777 10TH STREET
 MARION, IOWA 52302 25189-10
 (319) 373-1318

SECTION CORNER CERTIFICATE

OF
 LAND SURVEY MONUMENTS SITUATED IN SECTION 6, TOWNSHIP 83 NORTH,
 RANGE 3 WEST, OF THE FIFTH PRINCIPAL MERIDIAN, JONES, COUNTY, IOWA.

PREVIOUSLY RECORDED IN BOOK _____ AT PAGE _____

FOR RECORDER'S USE

REASON FOR PREPARING CERTIFICATE:

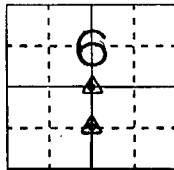
- A) THERE IS NO CERTIFICATE FOR THE CORNER ON FILE WITH THE RECORDER OF THE COUNTY IN WHICH THE CORNER IS LOCATED.
- B) CORNER POSITION DIFFERS FROM THAT SHOWN IN THE PUBLIC RECORDS OF THE COUNTY IN WHICH THE CORNER IS LOCATED.
- C) THE CORNER MONUMENT HAS BEEN REPLACED OR MODIFIED.
- D) THE REFERENCE TIES REFERRED TO IN AN EXISTING PUBLIC RECORD ARE INCORRECT.

MONUMENT DESCRIPTION AND REMARKS :

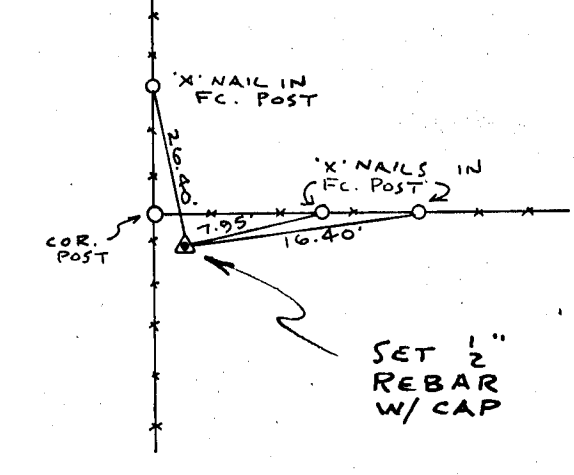
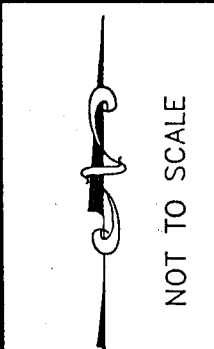
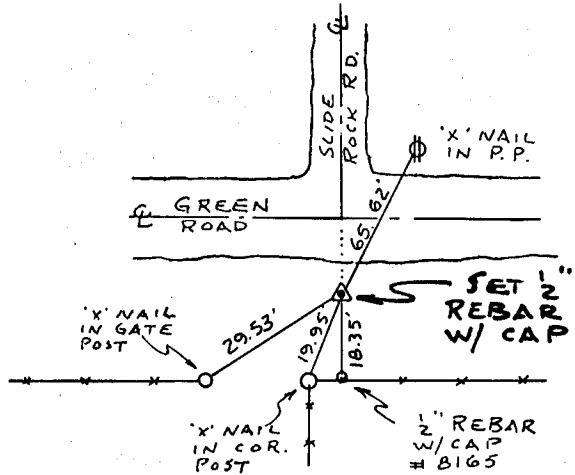
NW CORNER - SE 1/4 SECTION 6-T83N-R3W SET 1/2" REBAR W/
 L.S. CAP # 8165 ON & EXTENDED OF SLIDE ROCK ROAD &
 ON SOUTH EDGE OF GREEN ROAD SHOULDER
 SW CORNER - NW 1/4 SE 1/4 SECTION 6-T83N-R3W SET 1/2" REBAR
 W/ L.S. CAP # 8165 FLUSH 6' SOUTH & 4 1/2' EAST OF FENCES

RECOVERY TIE DRAWING

N.W. COR. - SE 1/4 6-83-3



S.W. COR. - NW-SE 6-83-3



ON CARD 9-24-93 M.S.

I, GLEN D. MEISNER, - CERTIFY THAT THE CORNER LOCATION(S) SHOWN ON THIS RECORD WERE DETERMINED BY ME OR UNDER MY DIRECTION AND CONTROL AND THAT THIS U.S. PUBLIC LAND SURVEY MONUMENT RECORD IS CORRECT AND COMPLETE TO THE BEST OF MY KNOWLEDGE AND BELIEF.



Glen D. Meisner 6-29-93
 GLEN D. MEISNER L.S. NO 8165 DATE

DZMPDL GOVERNMENT CORNER 5/8" TIE PIN SET CENTERLINE EXISTING FENCE LINE R.O.W. LINE	SHEET TITLE: U.S. PUBLIC LAND SURVEY RECORD PROJECT TITLE: KEN WARD SURVEY	HALL AND HALL ENGINEERS, INC. 226 29TH STREET DRIVE S.E. CEDAR RAPIDS, IOWA 52403 319-362-9548
	DWN RWB KIC GDM APP DATE: 3-29-93 SCALE: NONE FNO: OT 26 PNO: 4833	