

2000 0578
 FILED
 RECORDERS OFFICE
 JONES COUNTY IOWA

Rome

00 FEB 17 AM 11:05

MARIE KRUTZFIELD
 RECORDER 6.00pl

CLARENCE J. WALTON, BRAIN ENGINEERING, INC., 777 10TH STREET, MARION, IOWA 52302 PH. (319) 373-1318

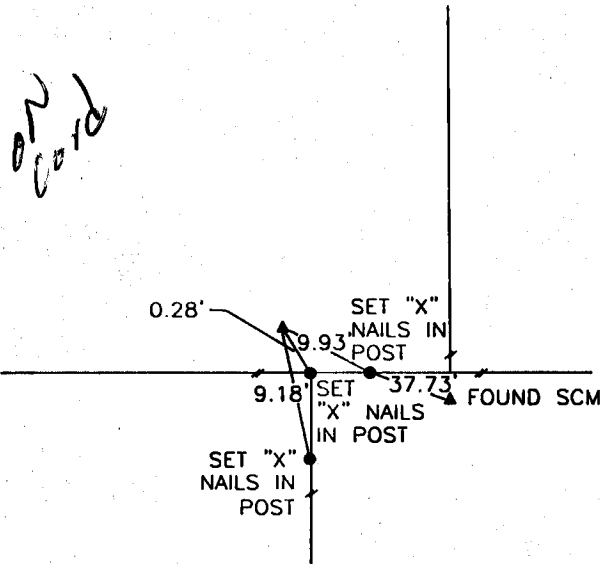
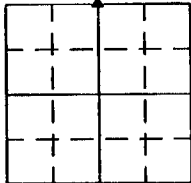
UNITED STATES PUBLIC LAND SURVEY CORNER CERTIFICATE

LAND SURVEY MONUMENTS SITUATED IN SECTION 6, TOWNSHIP 83 NORTH
 RANGE 3 WEST OF THE 5TH P.M., _____ JONES _____ COUNTY, IOWA.

NO SCALE



N 1/4

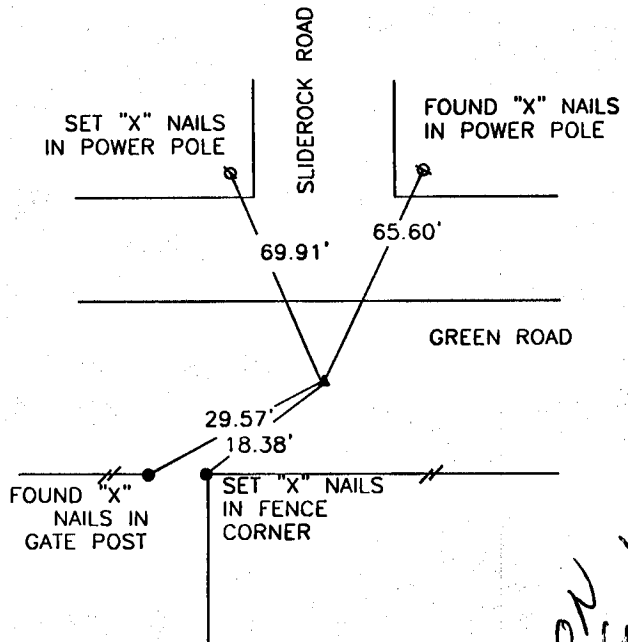
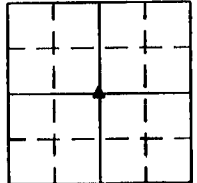


ON Card

NO SCALE



CENTER



ON Card

PREVIOUSLY RECORDED IN BOOK _____ PAGE _____

MONUMENT DESCRIPTION AND HOW ESTABLISHED _____
 FOUND SCM 2" ABOVE GROUND.

PREVIOUSLY RECORDED IN BOOK 341 PAGE 46

MONUMENT DESCRIPTION AND HOW ESTABLISHED _____
 FOUND 1/2" REBAR



I hereby certify that this land surveying document and the related survey work was performed by me or under my direct personal supervision and that I am a duly licensed Land Surveyor under the laws of the State of Iowa.
 Signed *Clarence J. Walton* Date 7/14/00
 Clarence J. Walton, L.S.
 My License Renewal Date is December 31, 2001
 License Number 11310
 Pages or sheets covered by this seal:

CORNER	SECTION	TOWNSHIP	RANGE
N 1/4	6	T83N	R3W
CENTER	6	T83N	R3W

BRAIN ENGINEERING, INC.

777 10TH STREET
 MARION, IOWA 52302 25189-10
 (319) 373-1318