

2003 1086

FILED  
RECORDERS OFFICE  
JONES COUNTY IOWA

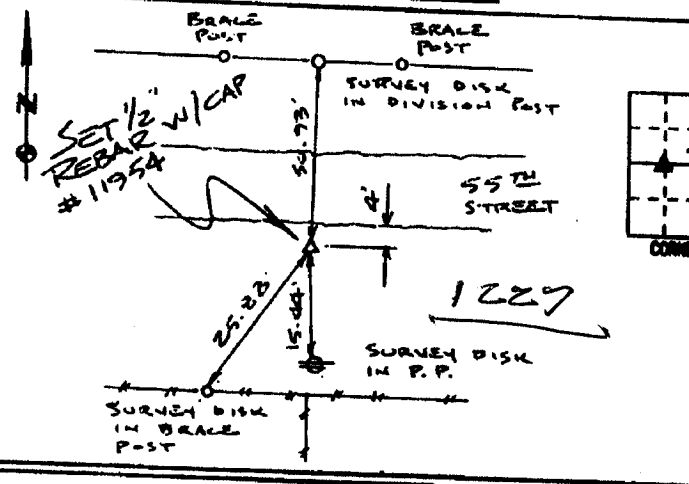
03 MAR 13 PM 1:33

MARIE KRUTZFIELD  
RECORDER 6:00 PM

PREPARED BY HALL & HALL ENGINEERS, INC. 209 29TH STREET N.E. CEDAR RAPIDS, IOWA 52402 (319) 362-9548

LAND SURVEY MONUMENTS SITUATED IN SECTION 7, TOWNSHIP 83 NORTH,  
RANGE 3 WEST, OF THE FIFTH PRINCIPAL MERIDIAN, JONES COUNTY IOWA.

RECOVERY TIE DRAWING

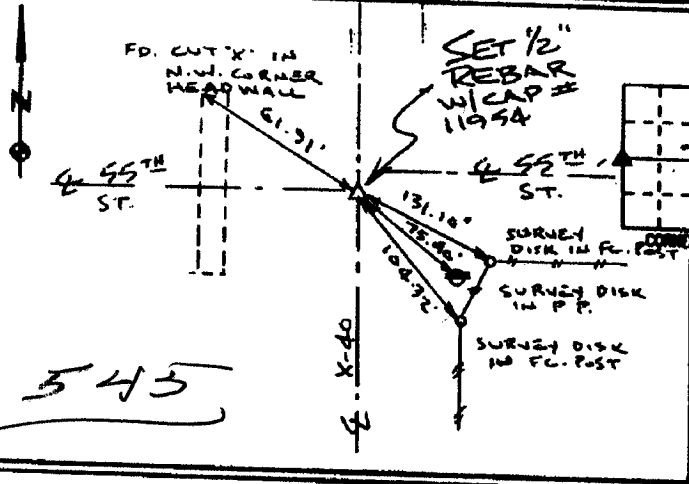


MONUMENT DESCRIPTION AND REMARKS:  
NE COR - NW - SW SECTION 7-83-3

REASON FOR PREPARING CERTIFICATE: (A) B, C OR D  
PREVIOUS BOOK \_\_\_\_\_, PAGE \_\_\_\_\_  
SET 1/2" REBAR W/ RED L.S. CAP  
# 11954 FLUSH W/ SURFACE 4'  
SOUTH OF SOUTH EDGE 55TH ST.

IN LINE W/ FENCE SOUTH BY  
SPLITTING DISTANCE FROM W/4  
CORNER TO CENTER OF SECTION 7

833071-120700

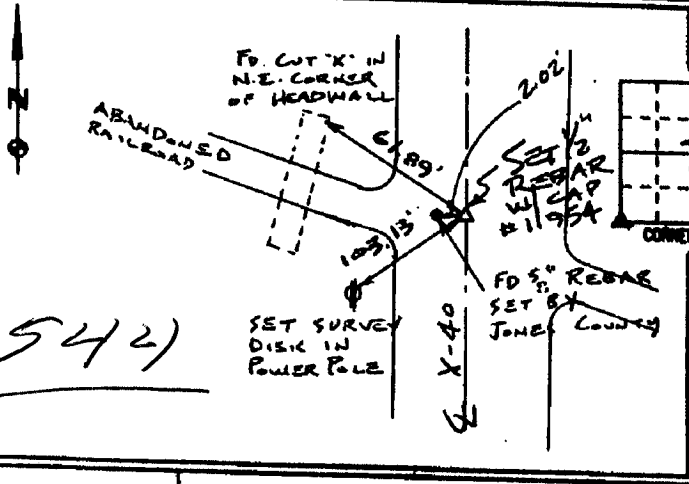


W/4 CORNER SECTION 7-83-3

REASON FOR PREPARING CERTIFICATE: (A) B, C OR D  
PREVIOUS BOOK \_\_\_\_\_, PAGE \_\_\_\_\_  
SET 1/2" REBAR W/ RED L.S. CAP  
# 11954 2" DEEP ON E X-40  
AND E 55TH STREET WEST

SET THIS PIN @ LOCATION OF FOUND  
PIN BEFORE X-40 GRADING

834120-120700  
~~833076-120700~~



S.W. CORNER SECTION 7-83-3

REASON FOR PREPARING CERTIFICATE: (A) B, C OR D  
PREVIOUS BOOK \_\_\_\_\_, PAGE \_\_\_\_\_  
SET 1/2" REBAR W/ RED L.S. CAP  
# 11954 2" DEEP ON E X-40

SET THIS PIN @ LOCATION OF  
FOUND PIN BEFORE X-40 GRADING

~~833076-120700~~  
834130-120700



I hereby certify that this land surveying document was prepared and the related survey work was performed by me or under my direct personal supervision and that I am a duly licensed Land Surveyor under the laws of the State of Iowa.  
Signed: *Daniel J. Johnson* Date: 12-7-00  
Daniel J. Johnson, L.S. 1984  
My license renewal date is December 31, 2000  
Pages or sheets covered by this book:  
(Entire submission unless specified here)

- REASON FOR PREPARING CERTIFICATE:
- A) THERE IS NO CERTIFICATE FOR THE CORNER ON FILE WITH THE RECORDER OF THE COUNTY IN WHICH THE CORNER IS LOCATED.
  - B) CORNER POSITION DIFFERS FROM THAT SHOWN IN THE PUBLIC RECORDS OF THE COUNTY IN WHICH THE CORNER IS LOCATED.
  - C) THE CORNER MONUMENT HAS BEEN REPLACED OR MODIFIED.
  - D) THE REFERENCE TIES REFERRED TO IN AN EXISTING PUBLIC RECORD ARE INCORRECT OR MISSING.

SHEET NO. U.S. PUBLIC LAND SURVEY CORNER CERTIFICATE  
PROJECT NO. IVAN BOWERS SURVEY

HALL AND HALL ENGINEERS, INC.  
209 29TH STREET N.E.  
CEDAR RAPIDS, IOWA 52402  
(319) 362-9548

DATE: 3/20/00 SCALE: NONE P. NO. 0T58 P. NO. 6955