

2003 1077

FILED
RECORDERS OFFICE
JONES COUNTY IOWA

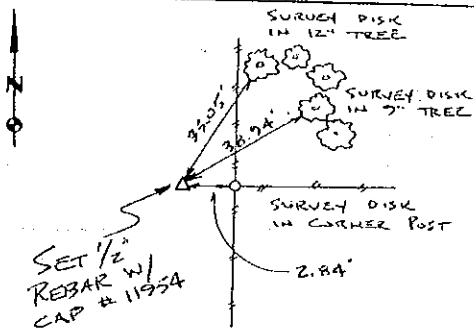
03 MAR 13 PM 1:22

MARIE KRUTZFIELD
RECORDER *600Pd*

PREPARED BY HALL & HALL ENGINEERS, INC. 209 29TH STREET N.E. CEDAR RAPIDS, IOWA 52402 (319) 362-9548

LAND SURVEY MONUMENTS SITUATED IN SECTION 7, TOWNSHIP 83 NORTH,
RANGE 3 WEST, OF THE FIFTH PRINCIPAL MERIDIAN, JONES COUNTY IOWA.

RECOVERY TIE DRAWING



MONUMENT DESCRIPTION AND REMARKS:

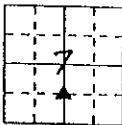
N.W. CORNER - SW-SE SECTION 7-83-3

REASON FOR PREPARING CERTIFICATE: (A) B, C OR D
PREVIOUS BOOK _____, PAGE _____

SET 1/2" REBAR W/ RED U.S. CAP
11954 FLUSH W/ SURFACE IN
LINE W/ FENCE EAST.

CORNER SET BY SPLITTING

DISTANCE IN HALF ON A STRAIGHT
LINE BETWEEN CENTER AND S/4
CORNER SECTION 7

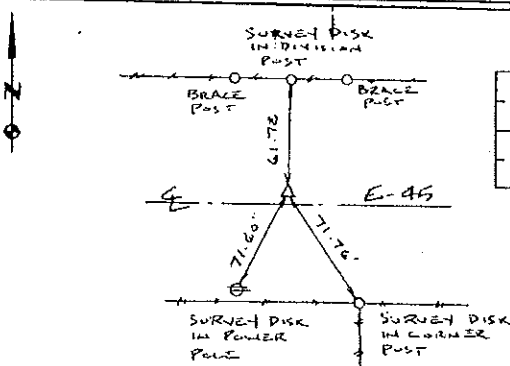


CORNER INDEX

S/4 CORNER SECTION 7-83-3

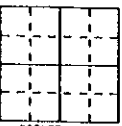
REASON FOR PREPARING CERTIFICATE: (A) B, C OR D
PREVIOUS BOOK _____, PAGE _____

SET CUT 'X' NORTH OF E
E-45 IN LINE W/ DIVISION
POST NORTH AND WEST OF
FENCE SOUTH

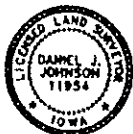


CORNER INDEX

REASON FOR PREPARING CERTIFICATE: A, B, C OR D
PREVIOUS BOOK _____, PAGE _____



CORNER INDEX



I hereby certify that this (land surveying) document was prepared and the related survey work was performed by me or under my direct personal supervision and that I am a duly licensed Land Surveyor under the laws of the State of Iowa.

Signed: *Daniel J. Johnson* Date: 2-27-03
Daniel J. Johnson, L.S. 11954

My license renewal date is December 31, 2004

Pages or sheets covered by this seal: 1
(Entire submission unless specified here)

REASON FOR PREPARING CERTIFICATE:

- A) THERE IS NO CERTIFICATE FOR THE CORNER ON FILE WITH THE RECORDER OF THE COUNTY IN WHICH THE CORNER IS LOCATED.
- B) CORNER POSITION DIFFERS FROM THAT SHOWN IN THE PUBLIC RECORDS OF THE COUNTY IN WHICH THE CORNER IS LOCATED.
- C) THE CORNER MONUMENT HAS BEEN REPLACED OR MODIFIED.
- D) THE REFERENCE TIES REFERRED TO IN AN EXISTING PUBLIC RECORD ARE INCORRECT OR MISSING.

SHEET NO. _____
DATE: U.S. PUBLIC LAND SURVEY CORNER CERTIFICATE

PROJECT NO. IVAN BOWERS SURVEY



HALL AND HALL ENGINEERS, INC.
209 29TH STREET N.E.
CEDAR RAPIDS, IOWA 52402
(319) 362-9548

SCALE: NONE	P. NO. 0758	P. NO. 6955
DATE: 3/20/00		
BY: RWB	CHK: LRM	APP: [Signature]

2002 3026

FILED
RECORDERS OFFICE
JONES COUNTY IOWA

8330TR-081602

8331BC-081602

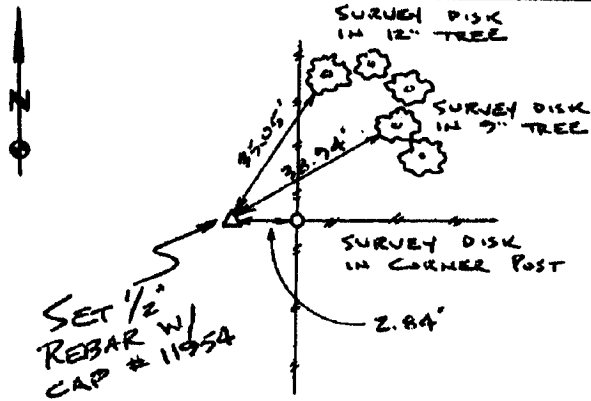
02 AUG 16 PM 12:52

MARIE KRUTZFIELD
RECORDER 6.00pd

PREPARED BY HALL & HALL ENGINEERS, INC. 209 29TH STREET N.E. CEDAR RAPIDS, IOWA 52402 (319) 362-9548

LAND SURVEY MONUMENTS SITUATED IN SECTION 7, TOWNSHIP 83 NORTH,
RANGE 3 WEST, OF THE FIFTH PRINCIPAL MERIDIAN, JONES COUNTY IOWA.

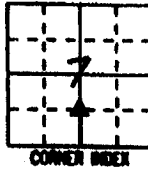
RECOVERY TIE DRAWING



MONUMENT DESCRIPTION AND REMARKS:

N.W. CORNER - SW-4E SECTION 7-83-3

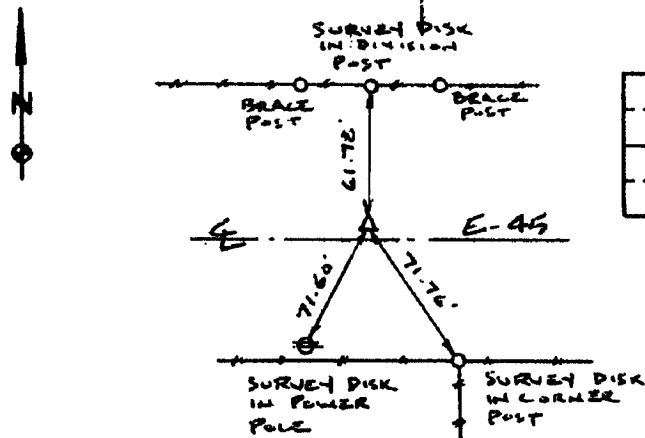
REASON FOR PREPARING CERTIFICATE: (A) B, C OR D
PREVIOUS BOOK _____, PAGE _____
SET 1/2" REBAR W/ RED L.S. CAP
11954 FLUSH W/ SURFACE IN
LINE W/ FENCE EAST.



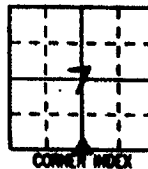
CORNER INDEX

CORNER SET BY SPLITTING
DISTANCE IN HALF ON A STRAIGHT
LINE BETWEEN CENTER AND S/4
CORNER SECTION 7

S/4 CORNER SECTION 7-83-3

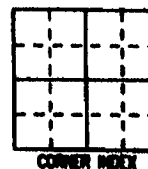


REASON FOR PREPARING CERTIFICATE: (A) B, C OR D
PREVIOUS BOOK _____, PAGE _____
SET CUT 'X' NORTH OF E
E-45 IN LINE W/ DIVISION
POST NORTH AND WEST OF
FENCE SOUTH



CORNER INDEX

REASON FOR PREPARING CERTIFICATE: A, B, C OR D
PREVIOUS BOOK _____, PAGE _____



CORNER INDEX



I hereby certify that this land surveying document was prepared and the related survey work has performed by me or under my direct personal supervision and that I am a duly licensed Land Surveyor under the laws of the State of Iowa.

Signature: *Daniel J. Johnson* Date: 8-16-02

Daniel J. Johnson, L.S. 11954
My license renewal date is December 31, 2002

Pages or sheets covered by this cost:
(Entire submission unless specified here) 1/1

REASON FOR PREPARING CERTIFICATE:

- A) THERE IS NO CERTIFICATE FOR THE CORNER ON FILE WITH THE RECORDER OF THE COUNTY IN WHICH THE CORNER IS LOCATED.
- B) CORNER POSITION DIFFERS FROM THAT SHOWN IN THE PUBLIC RECORDS OF THE COUNTY IN WHICH THE CORNER IS LOCATED.
- C) THE CORNER MONUMENT HAS BEEN REPLACED OR MODIFIED.
- D) THE REFERENCE TIES REFERRED TO IN AN EXISTING PUBLIC RECORD ARE INCORRECT OR MISSING.

SHEET NO: U.S. PUBLIC LAND SURVEY CORNER CERTIFICATE

PROJECT NO: IVAN BOWERS SURVEY

HALL AND HALL ENGINEERS, INC.
209 29TH STREET N.E.
CEDAR RAPIDS, IOWA 52402
(319) 362-9548

DATE: 8/20/00 SCALE: NONE FNS: 0758 PMS: 6955

2003 1085

FILED
RECORDERS OFFICE
JONES COUNTY IOWA

03 MAR 13 PM 1:32

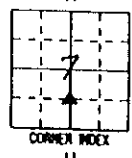
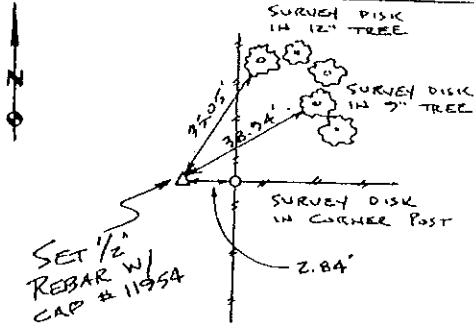
MARIE KRUTZFIELD
RECORDER 6.00 PD

PREPARED BY HALL & HALL ENGINEERS, INC. 209 29TH STREET N.E. CEDAR RAPIDS, IOWA 52402 (319) 362-9548

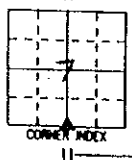
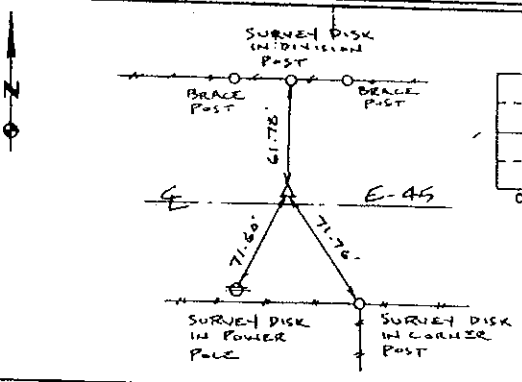
LAND SURVEY MONUMENTS SITUATED IN SECTION 7, TOWNSHIP 83 NORTH,
RANGE 3 WEST, OF THE FIFTH PRINCIPAL MERIDIAN, JONES COUNTY IOWA.

RECOVERY TIE DRAWING

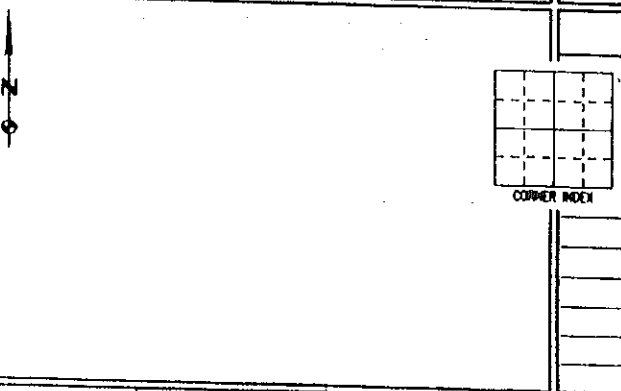
MONUMENT DESCRIPTION AND REMARKS:



N.W. CORNER - SW-4E SECTION 7-83-3
 REASON FOR PREPARING CERTIFICATE: (A, B, C OR D)
 PREVIOUS BOOK _____, PAGE _____
 SET 1/2 REBAR W/ RED U.S. CAP # 11954 FLUSH W/ SURFACE IN LINE W/ FENCE EAST.
 CORNER SET BY SPLITTING
 DISTANCE IN HALF ON A STRAIGHT LINE BETWEEN CENTER AND S/4 CORNER SECTION 7

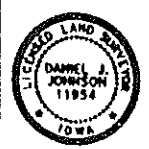


S/4 CORNER SECTION 7-83-3
 REASON FOR PREPARING CERTIFICATE: (A, B, C OR D)
 PREVIOUS BOOK _____, PAGE _____
 SET CUT 'X' NORTH OF E-45 IN LINE W/ DIVISION POST NORTH AND WEST OF FENCE SOUTH



REASON FOR PREPARING CERTIFICATE: A, B, C OR D
 PREVIOUS BOOK _____, PAGE _____

I hereby certify that this land surveying document was prepared and the related survey work was performed by me or under my direct personal supervision and that I am a duly Licensed Land Surveyor under the laws of the State of Iowa.
 Signed: Daniel J. Johnson Date: 12-7-00
 Daniel J. Johnson, L.S. 1854
 My license renewed Sept 15 December 31, 2000
 Pages or sheets covered by this seal:
 (Enter submission unless specified here)



- REASON FOR PREPARING CERTIFICATE:
- A) THERE IS NO CERTIFICATE FOR THE CORNER ON FILE WITH THE RECORDER OF THE COUNTY IN WHICH THE CORNER IS LOCATED.
 - B) CORNER POSITION DIFFERS FROM THAT SHOWN IN THE PUBLIC RECORDS OF THE COUNTY IN WHICH THE CORNER IS LOCATED.
 - C) THE CORNER MONUMENT HAS BEEN REPLACED OR MODIFIED.
 - D) THE REFERENCE TIES REFERRED TO IN AN EXISTING PUBLIC RECORD ARE INCORRECT OR MISSING.

SHEET NO: _____
 PROJECT NAME: Ivan Bowers Survey
 U.S. PUBLIC LAND SURVEY CORNER CERTIFICATE

HALL AND HALL ENGINEERS, INC.
 209 29TH STREET N.E.
 CEDAR RAPIDS, IOWA 52402
 (319) 362-9548

R/W	RWB	LRM	A/R	D/E	3/20/00	SCALE	NONE	F NO	0758	P NO	6955
-----	-----	-----	-----	-----	---------	-------	------	------	------	------	------