

2003 1084

FILED
RECORDERS OFFICE
JONES COUNTY IOWA

03 MAR 13 PM 1:31

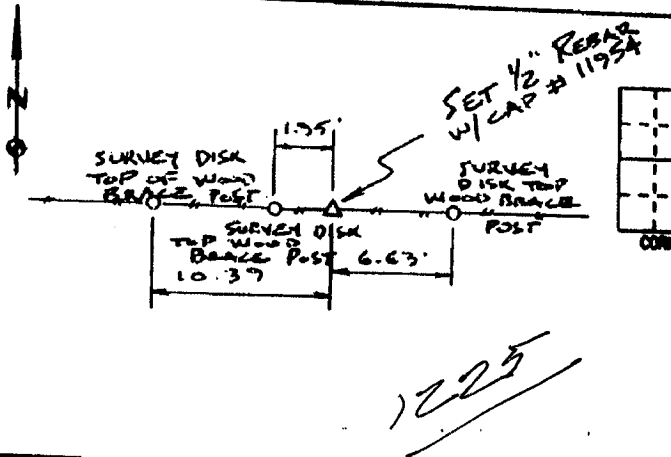
MARIE KRUTZFIELD
RECORDER 6.00Pd

PREPARED BY HALL & HALL ENGINEERS, INC. 209 29TH STREET N.E. CEDAR RAPIDS, IOWA 52402 (319) 362-9548

LAND SURVEY MONUMENTS SITUATED IN SECTION 7, TOWNSHIP 83 NORTH,
RANGE 3 WEST, OF THE FIFTH PRINCIPAL MERIDIAN, JONES COUNTY IOWA.

RECOVERY TIE DRAWING

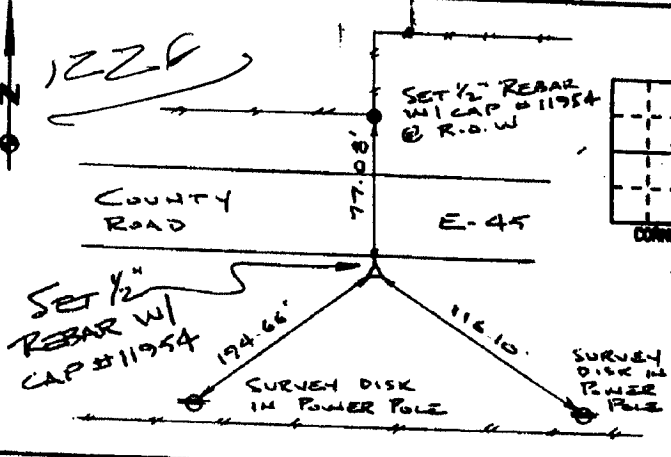
MONUMENT DESCRIPTION AND REMARKS:



N.E. CORNER - SW-SE SECTION 7-83-3

REASON FOR PREPARING CERTIFICATE: (A, B, C OR D) B, C OR D
PREVIOUS BOOK _____, PAGE _____
SET 1/2" REBAR W/ RED L.S.
CAP # 11954 FLUSH W/
SURFACE ON EAST-WEST FENCE
2' EAST OF DIVISION POST

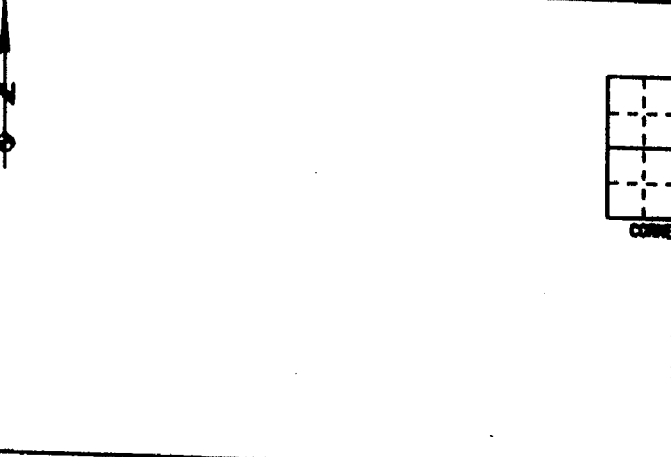
83307s-120700



SE CORNER - SW-SE SECTION 7-83-3

REASON FOR PREPARING CERTIFICATE: (A, B, C OR D) B, C OR D
PREVIOUS BOOK _____, PAGE _____
SET 1/2" REBAR W/ RED L.S.
CAP # 11954 2" BELOW
SURFACE ON SOUTH SHOULDER
COUNTY ROAD E-45 1' OFF
EDGE OF SLAB

83318d-120700



REASON FOR PREPARING CERTIFICATE: A, B, C OR D
PREVIOUS BOOK _____, PAGE _____



I hereby certify that this land surveying document was prepared and the related survey work was performed by me or under my direct personal supervision and that I am a duly licensed Land Surveyor under the laws of the State of Iowa.

Signed: [Signature] Date: 12-7-00
Daniel J. Johnson, L.S. 11854
My license renewal date is December 31, 2000

Pages or sheets covered by this seal:
(Entire submission unless specified here)

- REASON FOR PREPARING CERTIFICATE:
- A) THERE IS NO CERTIFICATE FOR THE CORNER ON FILE WITH THE RECORDER OF THE COUNTY IN WHICH THE CORNER IS LOCATED.
 - B) CORNER POSITION DIFFERS FROM THAT SHOWN IN THE PUBLIC RECORDS OF THE COUNTY IN WHICH THE CORNER IS LOCATED.
 - C) THE CORNER MONUMENT HAS BEEN REPLACED OR MODIFIED.
 - D) THE REFERENCE TIES REFERRED TO IN AN EXISTING PUBLIC RECORD ARE INCORRECT OR MISSING.

SHEET NO: U.S. PUBLIC LAND SURVEY CORNER CERTIFICATE

PROJECT NO: IVAN BOWERS SURVEY

DATE: 3/20/00

HALL AND HALL ENGINEERS, INC.
209 29TH STREET N.E.
CEDAR RAPIDS, IOWA 52402
(319) 362-9548

SCALE: NONE

FIG NO: OT 58

FIG NO: 6755