

83307a-11201

ID 534

2001 3965

FILED
RECORDERS OFFICE
JONES COUNTY IOWA

01 NOV 16 AM 11:48

MARIE KRUTZFIELD
RECORDER No Fee

83307e-11201

ID 546

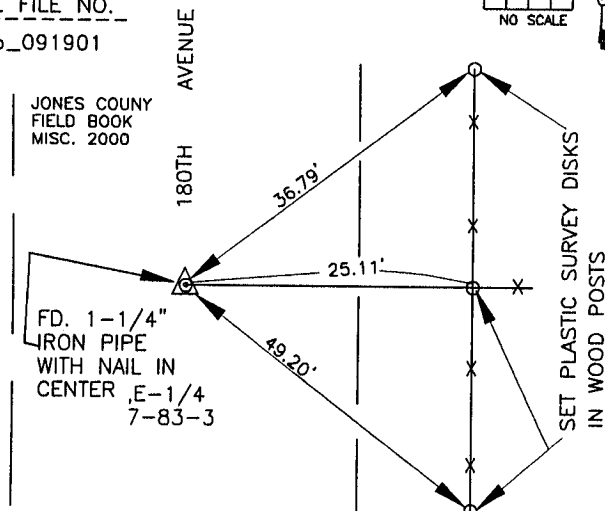
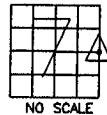
J.D. TJEPKES, LS. JONES COUNTY ENGINEER'S OFFICE, 19501 HWY. 64, ANAMOSA, IOWA, 52205 (319)462-3785

UNITED STATES PUBLIC LAND SURVEY CORNER CERTIFICATE

LAND SURVEY MONUMENTS SITUATED IN SECTION 7, TOWNSHIP 83
NORTH, RANGE 3 WEST OF THE 5TH P.M., JONES COUNTY, IOWA

CORNERS TO BE INDEXED

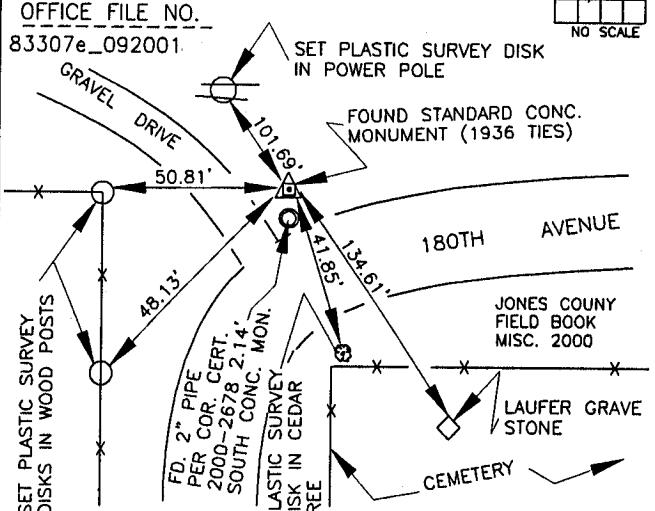
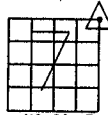
CORNER SECTION TOWNSHIP RANGE
E-1/4 7 83N 3W
OFFICE FILE NO.
83307a_091901



PREVIOUSLY RECORDED IN BOOK N/A, PAGE N/A
MONUMENT DESCRIPTION AND HOW ESTABLISHED FOUND
1-1/4" PIPE WITH NAIL IN CENTER 6" BELOW ROAD
SURFACE. SET REFERENCE POINTS AND TIED OUT AS
INDICATED. EAST QUARTER CORNER SECTION 7, T83N,
R3W, 5TH P.M., JONES COUNTY, IOWA

CORNERS TO BE INDEXED

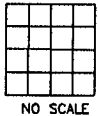
CORNER SECTION TOWNSHIP RANGE
NORTHEAST 7 83N 3W
OFFICE FILE NO.
83307e_092001



PREVIOUSLY RECORDED IN BOOK 2000, PAGE 2678
FOUND STANDARD
CONCRETE MONUMENT PER COUNTY ENGINEER'S TIES (1936) WHICH INDICATED A
FOUND Limestone WITH SAID CONCRETE MONUMENT PLACED ABOVE. FOUND 2" PIPE
2.14' SOUTH STANDARD MONUMENT, WHICH PIPE WAS USED FOR PLAT OF SURVEY
PLAT BOOK "F", PAGE 109. SET REFERENCE POINTS AND TIED OUT AS INDICATED.
NORTHEAST CORNER SECTION 7, T83N, R3W, 5TH P.M., JONES COUNTY, IOWA

CORNERS TO BE INDEXED

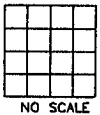
CORNER SECTION TOWNSHIP RANGE
OFFICE FILE NO.



PREVIOUSLY RECORDED IN BOOK _____, PAGE _____
MONUMENT DESCRIPTION AND HOW ESTABLISHED _____

CORNERS TO BE INDEXED

CORNER SECTION TOWNSHIP RANGE
OFFICE FILE NO.

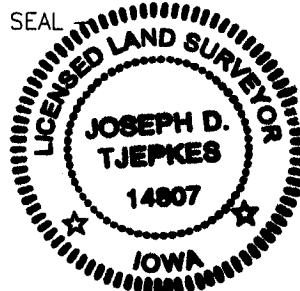


PREVIOUSLY RECORDED IN BOOK _____, PAGE _____
MONUMENT DESCRIPTION AND HOW ESTABLISHED _____

I hereby declare that this plat, survey or report was made by me or under my direct personal supervision and that I am a duly registered Land Surveyor under the laws of the State of Iowa.

Signed: *[Signature]* 11.12.01

Joseph D. Tjepkes L.S. Iowa Reg. No. 14807
My Registration Renewal Date is December 31, 2002



J.D. TJEPKES LS 14807
JONES COUNTY
ENGINEER'S OFFICE

19501 HWY. 64,
ANAMOSA, IOWA,
52205 (319)462-3785

UNITED STATES PUBLIC LAND SURVEY CORNER CERTIFICATE

LAND SURVEY MONUMENTS SITUATED IN SECTION 7, TOWNSHIP 83N
NORTH, RANGE 3 WEST OF THE 5TH P.M., JONES COUNTY, IOWA

1001 CORNERS TO BE INDEXED

CORNER	SECTION	TOWNSHIP	RANGE
N1/4	7	83N	3W

OFFICE FILE NO. 83307c_062101

NO CERT ON THIS

REF. JONES COUNTY CORNER STONE BOOK 8, PAGE 32 1936

PREVIOUSLY RECORDED IN BOOK N/A, PAGE N/A
MONUMENT DESCRIPTION AND HOW ESTABLISHED FOUND STONE ON N-S FENCE LINE 9' NORTH OF E-W FENCE. LOWERED STONE, SET STANDARD CONC. MON. ABOVE. NORTH QUARTER SEC. 7, T83N, R3W, JONES COUNTY, IOWA

546 CORNERS TO BE INDEXED

CORNER	SECTION	TOWNSHIP	RANGE
NORTHEAST	7	83N	3W

OFFICE FILE NO. 83307e_062201

NOTE: THIS MONUMENT CONFLICTS WITH MONUMENT FILED BY LEO WOODARD, AUGUST 25-00 (NORTHWEST 8)

REF. JONES COUNTY CORNER STONE BOOK 8 PAGE 31 1936

NO CERT. ON THIS

PREVIOUSLY RECORDED IN BOOK N/A, PAGE N/A
MONUMENT DESCRIPTION AND HOW ESTABLISHED FOUND Limestone ON LINE WITH CL RD. SOUTH. LOWERED STONE, SET STANDARD CONCRETE MONUMENT ABOVE TOP FLUSH WITH GROUND. TIED OUT AS INDICATED. NORTH-EAST CORNER SECTION 7, T83N, R3W, JONES COUNTY, IOWA

CORNERS TO BE INDEXED

CORNER	SECTION	TOWNSHIP	RANGE

OFFICE FILE NO. _____

✓

PREVIOUSLY RECORDED IN BOOK _____, PAGE _____
MONUMENT DESCRIPTION AND HOW ESTABLISHED _____

CORNERS TO BE INDEXED

CORNER	SECTION	TOWNSHIP	RANGE

OFFICE FILE NO. _____

PREVIOUSLY RECORDED IN BOOK _____, PAGE _____
MONUMENT DESCRIPTION AND HOW ESTABLISHED _____

~~I hereby declare that this plat, survey or report was made by me or under my direct personal supervision and that I am a duly registered Land Surveyor under the laws of the State of Iowa.~~

Signed: _____

Joseph D. Tjepkes L.S. Iowa Reg. No. 14807
My Registration Renewal Date is December 31, 2002

SEAL

JONES COUNTY ENGINEER'S OFFICE

19501 HWY. 64,
ANAMOSA, IOWA,
52205 (319)462-3785

2000 2678

FILED
RECORDERS OFFICE
JONES COUNTY IOWA

00 AUG 29 AM 11:25

MARIE KRUTZFIELD
RECORDER

SLSI 9-90

Prepared By: Leo D. Wooder, L.S. #14676 Anderson-Bogert Engineers & Surveyors, Inc.
229 Northland Court N.E. Cedar Rapids, Iowa 52402 Phone: (319) 377-4629

UNITED STATES PUBLIC LAND SURVEY CORNER CERTIFICATE
OF

Land Survey Monuments situated in Section 8, Township 83 North, Range 3 West, of the Fifth Principal Meridian, Jones County, Iowa.
Previously recorded in N/A in County Recorders Office.

(book, page, document number, ect.)

(Show reason for preparing this certificate, the evidence and detailed procedures used in establishing the corner positions and monumentation found or placed.)

Monument Description and Remarks: NW Corner Section 8-83-3 Found 2" Pipe (described in previous survey)

W 1/4 Corner Section 8-83-3 Found 1 3/4" Pipe (described in previous survey)

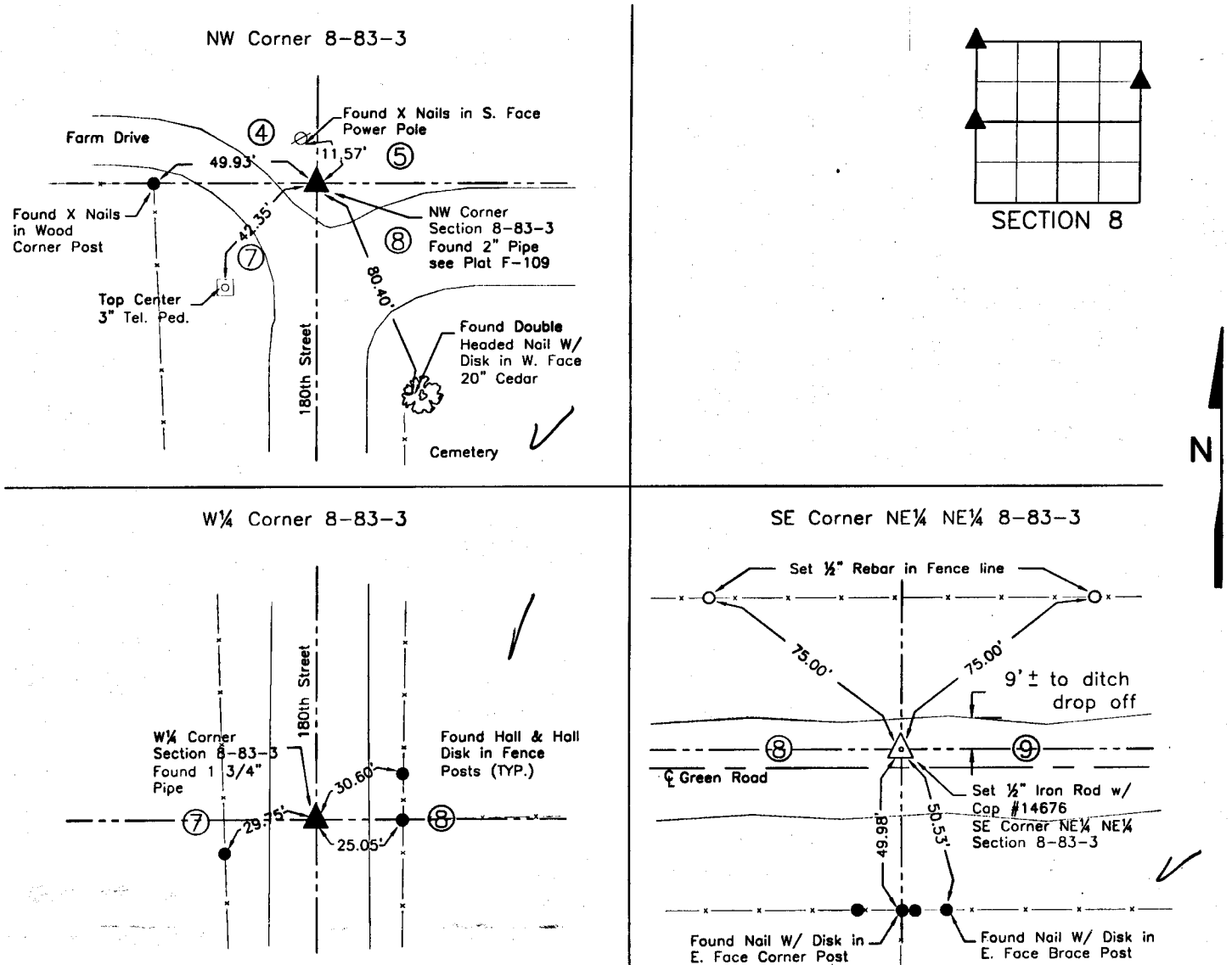
SE Corner NE 1/4 NE 1/4 Section 8-83-3 Set 1/2" Iron Rod W/ Orange Cap #14676

Corners used in Plat of Survey #2000-65

(Florence E. Duncan Estate)

PLAN - VIEW

(Show a minimum of three reference ties to durable physical objects, relevant monuments and physical conditions that will enable recovery of the corner.)

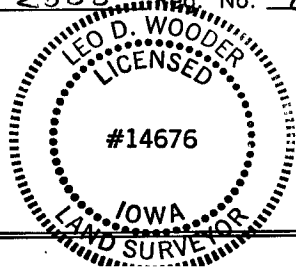


I hereby certify that the survey work was completed and this certificate was prepared by me or under my direct personal supervision and that I am a duly registered land surveyor under the laws of the state of Iowa.

Signature: Leo D. Wooder
Name typed or printed: Leo D. Wooder

Date: 8/25/2000 Reg. No. 14676

SEAL



Corners	List Corners to be Indexed		
	Section	Twp	Range
NW	8	83 North	3 West
W 1/4	8	83 North	3 West
SE Corner NE 1/4 NE 1/4	8	83 North	3 West

833