

UNITED STATES PUBLIC LAND SURVEY CORNER CERTIFICATE

LAND SURVEY MONUMENTS SITUATED IN SECTION 8, TOWNSHIP 83
NORTH, RANGE 3 WEST OF THE 5TH P.M., JONES COUNTY, IOWA

555 CORNERS TO BE INDEXED

CORNER SECTION TOWNSHIP RANGE
E-1/4 8 83N 3W

OFFICE FILE NO.

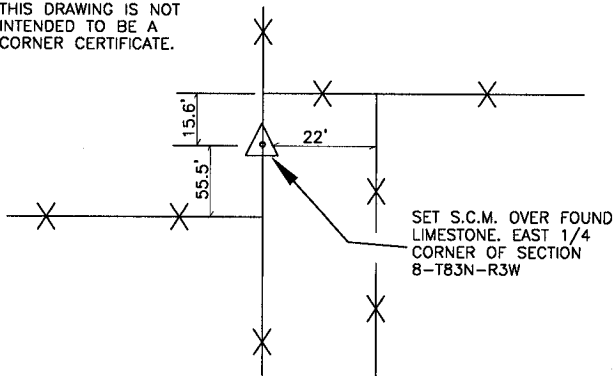
83308o_071001

NOTE:
THESE TIES DATE BACK TO NOV.
OF 1936. HAROLD DILLON FILED TIES ON
THIS CORNER IN JULY OF 1994 AND INDICATES
SETTING AN IRON PIN. THE POSITIONS ARE
PROBABLY THE SAME.



NO SCALE

THIS DRAWING IS NOT
INTENDED TO BE A
CORNER CERTIFICATE.

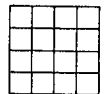


PREVIOUSLY RECORDED IN BOOK N/A, PAGE N/A
MONUMENT DESCRIPTION AND HOW ESTABLISHED FOUND LIME-
STONE UNDER N-W FENCE. LOWERED STONE. SET S.C.M.
TOP FLUSH WITH GROUND. TIED OUT AS INDICATED. EAST 1/4,
SEC. 8, T83N, R3W, 5TH PRINCIPAL MERIDIAN, JONES
COUNTY, IOWA, (1936)

CORNERS TO BE INDEXED

CORNER SECTION TOWNSHIP RANGE

OFFICE FILE NO.



NO SCALE

PREVIOUSLY RECORDED IN BOOK _____, PAGE _____
MONUMENT DESCRIPTION AND HOW ESTABLISHED _____

CORNERS TO BE INDEXED

CORNER SECTION TOWNSHIP RANGE

OFFICE FILE NO.



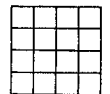
NO SCALE

PREVIOUSLY RECORDED IN BOOK _____, PAGE _____
MONUMENT DESCRIPTION AND HOW ESTABLISHED _____

CORNERS TO BE INDEXED

CORNER SECTION TOWNSHIP RANGE

OFFICE FILE NO.



NO SCALE

PREVIOUSLY RECORDED IN BOOK _____, PAGE _____
MONUMENT DESCRIPTION AND HOW ESTABLISHED _____

~~I hereby declare that this plat, survey or report
was made by me or under my direct personal
supervision and that I am a duly registered Land
Surveyor under the laws of the State of Iowa.~~

Signed:

~~Joseph D. Tjepkes L.S. Iowa Reg. No. 14807
My Registration Renewal Date is December 31, 2002~~

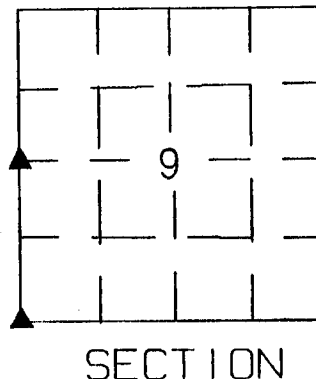
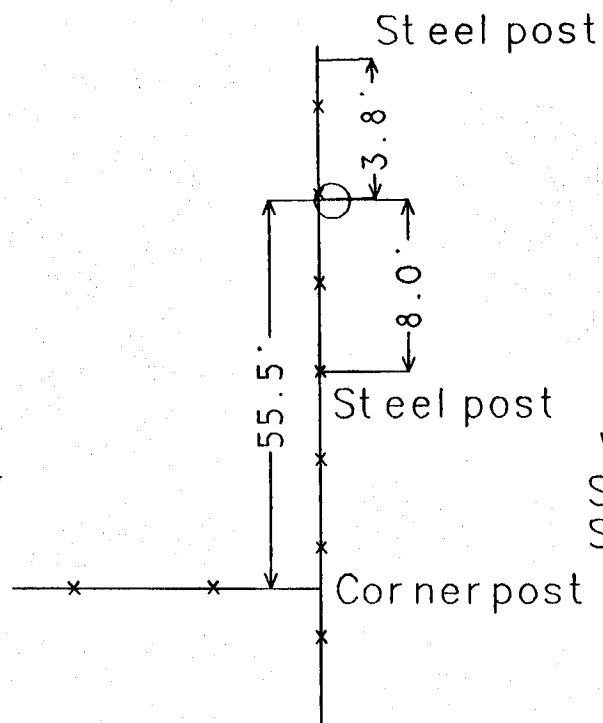
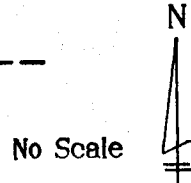
SEAL

JONES COUNTY
ENGINEER'S OFFICE

19501 HWY. 64,
ANAMOSA, IOWA,
52205 (319)462-3785

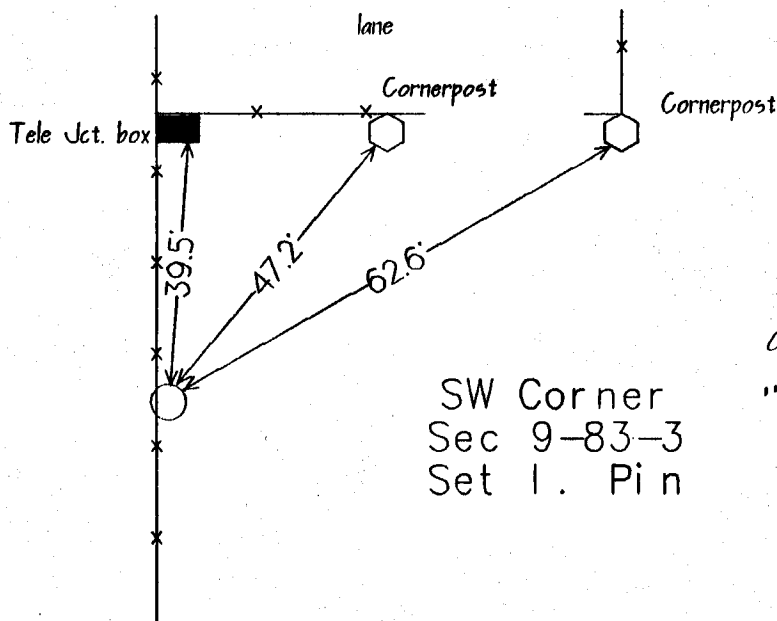
United States Public Land Survey Corner Certificate

Land survey corner in Section 9 Township 83
North, Range 3 West of the 5th Principal Meridian
Jones County, Iowa.



W 1/4 Cor
Sec 9-83-3
Set 1. Pin

*ON Cord
"E 1/4 Cor. Sec. 8"
11-29-94*



SW Corner
Sec 9-83-3
Set 1. Pin

*ON Cord
"NE Cor. Sec. 17"
11-29-94*

Certification

I hereby certify that this plot and survey was made by me or under my direct supervision and that I am a duly Registered Land Surveyor under the laws of the State of Iowa.

Harold E. Dillon
Harold E. Dillon Reg.#6581

7/14/94
date

