

Instrument #: 2020-0006
 01/02/2020 09:47:03 AM Total Pages: 1
 ZSC SECTION CORNER CERTIFICATE
 Recording Fee: \$7.00 Transfer Tax: \$0
 Sheri L. Jones, Recorder, Jones County Iowa



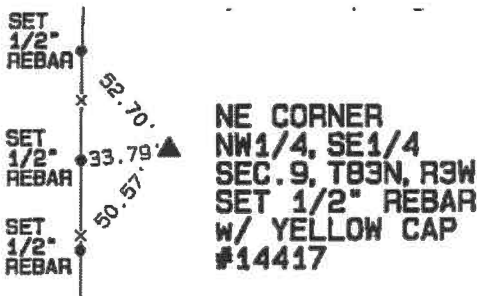
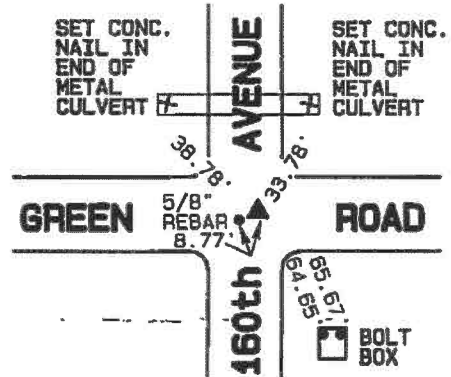
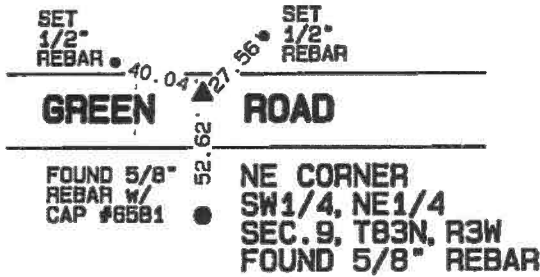
Prepared by: SCHNEIDER Land Surveying and Planning, Inc. P.O. Box 128 Farley, Iowa 52046 563-744-3631

UNITED STATES PUBLIC LAND SURVEY CORNER CERTIFICATE OF

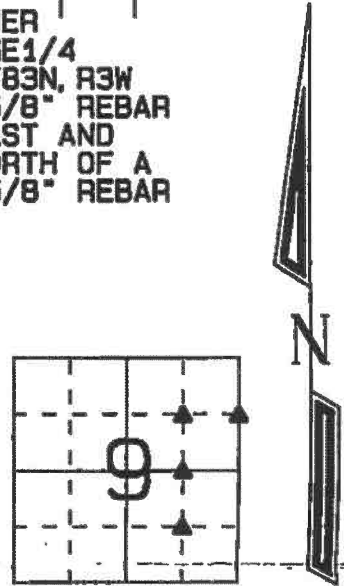
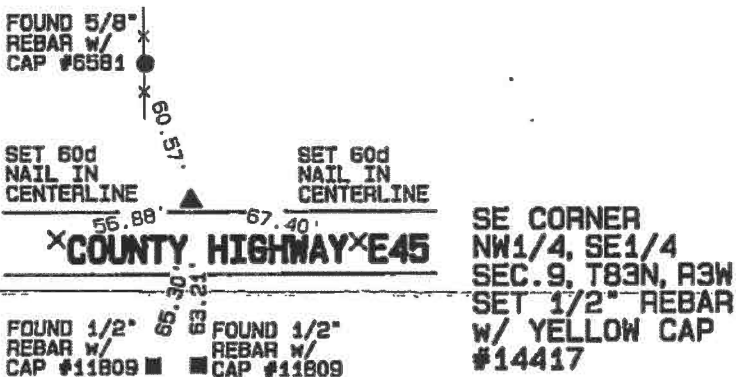
Land Survey Monuments situated in Section 9, Township 83 North, Range 3 West of the Fifth Principal Meridian, Jones County, Iowa.
 Previously recorded NE CORNER SW1/4, NE1/4 AND NE CORNER SE1/4, NE1/4 SCC INST NO. 89 99 1885

Monument-Description-and-Remarks: A 5/8" REBAR WAS FOUND AT THE NE CORNER OF THE SW1/4 OF THE NE1/4 OF SEC. 9, T83N, R3W AS ILLUSTRATED IN SECTION CORNER CERTIFICATE FILED AS INST. NO. 89 99 1885 IN THE JONES COUNTY RECORDER'S OFFICE. THE CORNER WAS RETIED TO ILLUSTRATE MORE ACCURATE TIES. A 5/8" REBAR WAS FOUND AT THE NE CORNER OF THE SE1/4 OF THE NE1/4 OF SEC. 9, T83N, R3W AS ILLUSTRATED IN SECTION CORNER CERTIFICATE FILED AS INST. NO. 89 99 1885 IN THE JONES COUNTY RECORDER'S OFFICE. THE CORNER WAS RETIED TO ILLUSTRATE MORE ACCURATE TIES. THE NE CORNER OF THE NW1/4 OF THE SE1/4 OF SEC. 9, T83N, R3W WAS ESTABLISHED AT THE MIDPOINT OF A LINE FROM THE CENTER TO THE E1/4 CORNER OF SAID SECTION 9. THE SE CORNER OF THE NW1/4 OF THE SE1/4 OF SEC. 9, T83N, R3W WAS ESTABLISHED AT THE THEORETICAL CENTER OF THE SE1/4 OF SAID SECTION 9.

PLAN - VIEW



NE CORNER SE1/4, NE1/4 SEC. 9, T83N, R3W FOUND 5/8" REBAR 8.6' EAST AND 1.8' NORTH OF A FOUND 5/8" REBAR



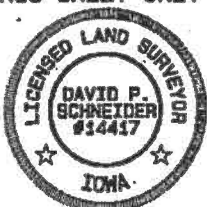
I hereby certify that this land surveying document was prepared and the related survey work was performed by me or under my direct personal supervision and that I am a duly licensed Land Surveyor under the laws of the State of Iowa.

David P. Schneider 12/30/2019
 David P. Schneider P.L.S. #14417 Date:
 My license renewal date is December 31, 2019.

Pages or sheets covered by this seal: THIS SHEET ONLY

SCHNEIDER
 Land Surveying & Planning, Inc.

P.O. Box 128 Farley, Iowa 52046
 Ph. #563-744-3631 daves@yousq.net



List Corners to be Indexed

Corners	Section	Twp	Range
NE CORNER SW1/4, NE1/4	9	83N	3W
NE CORNER SE1/4, NE1/4	9	83N	3W
NE CORNER NW1/4, SE1/4	9	83N	3W
SE CORNER NW1/4, SE1/4	9	83N	3W

JOB NO. 2155retrace

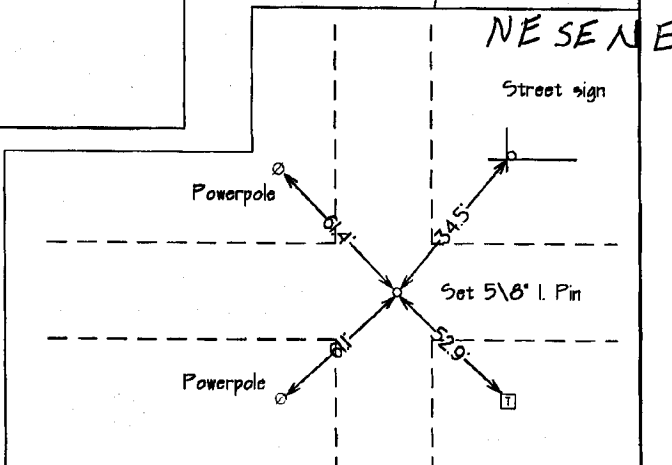
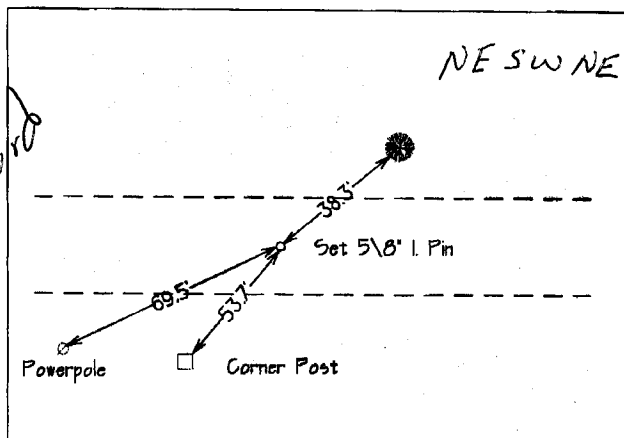
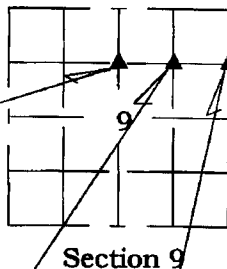
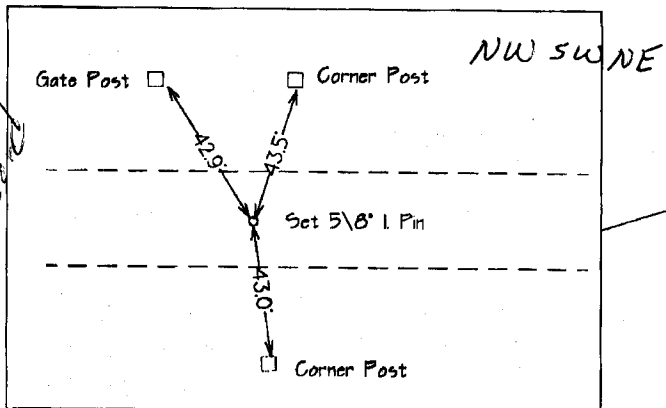
FILED
RECORDERS OFFICE
JONES COUNTY IOWA
98 NOV 30 AM 9:01
MARIE KRUTZFIELD
RECORDER 6.00 Pd

Rome Twp.

United States Public Land Survey Corner Certificate

Land survey corner in Section 9 Township 83 North,
Range 3 West of the 5th P.M. JONES County, Iowa.

No Scale



Certification

I hereby certify that this plat and survey was made by me or under my direct supervision and that I am a duly Registered Land Surveyor under the laws of the State of Iowa.

Harold E. Dillon 11/20/98

Harold E. Dillon Iowa Reg. 6581 My certification expires 12/31/98



DILLON SURVEYING CO.
CORALVILLE, IA 52241
(319) 351-5647

Page 1 of 1.
Job# 8632