

# UNITED STATES PUBLIC LAND SURVEY CORNER CERTIFICATE

OF

Land Survey Monuments situated in Section TEN (10), Township 83N, Range 3 WEST, of the Fifth Principal Meridian, JONES County, Iowa.  
 Previously recorded in \_\_\_\_\_ in County Recorder's Office.

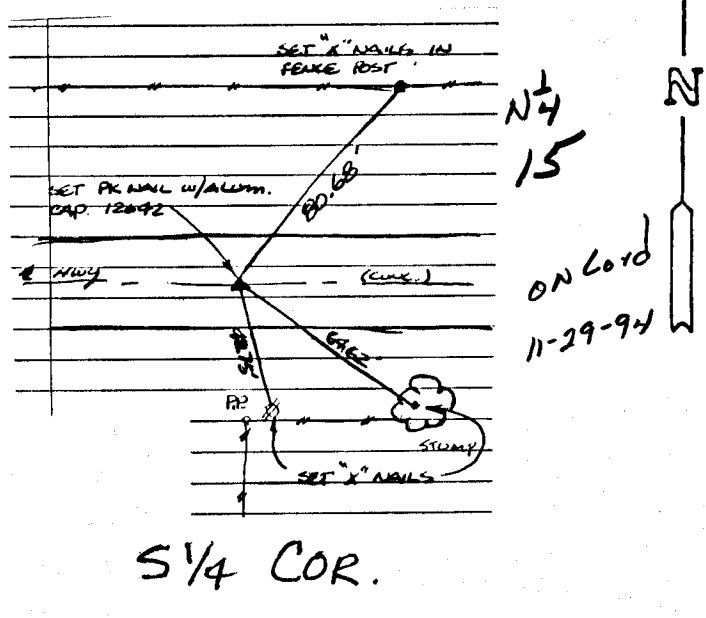
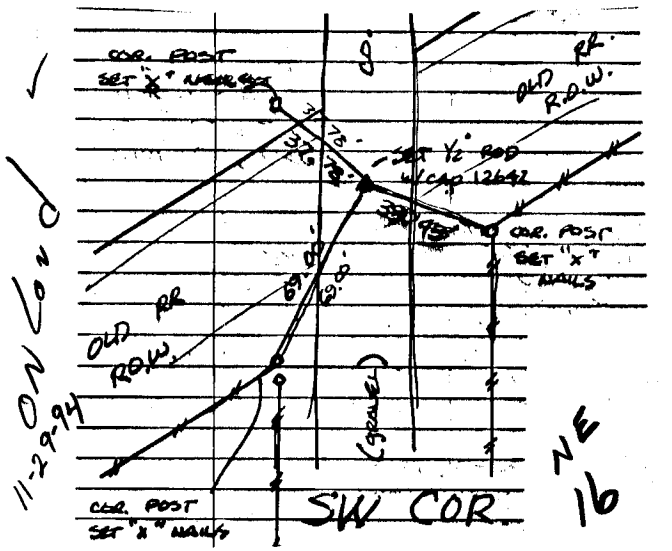
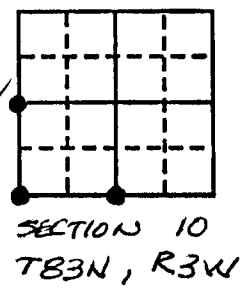
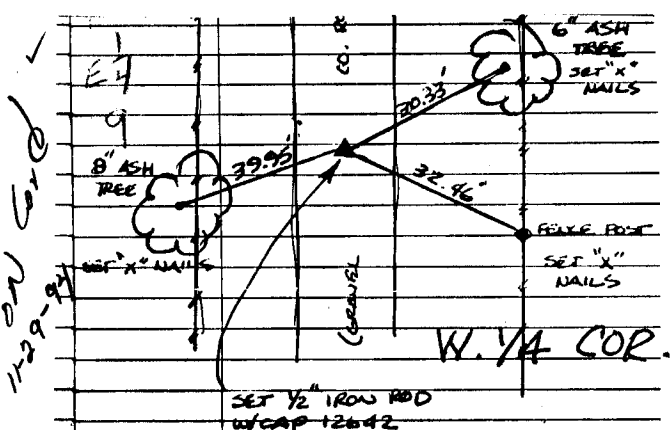
(book, page, document number, etc.)

(Show reason for preparing this certificate, the evidence and detailed procedures used in establishing the corner positions and monumentation found or placed.)

Monument Description and Remarks: NO CERTIFICATE PREVIOUSLY RECORDED  
RE-SET CORNERS IN ACCORDANCE WITH PLAT RECORDED  
IN IRREGULAR PLAT BOOK #1 PAGE 273  
ALL MONUMENTS SET AS DESCRIBED BELOW

## PLAN - VIEW

(Show a minimum of three reference ties to durable physical objects, relevant monuments and physical conditions that will enable recovery of the corner.)



DATE OF FIELD WORK:

I hereby certify that the survey work was completed and this certificate was prepared by me or under my direct personal supervision and that I am a duly registered land surveyor under the laws of the state of Iowa.

Signature: William H. Burger  
 Name typed or printed: WILLIAM H. BURGER  
 Date: 10/5/94 Reg. No. 12642

Corners	Section	Twp	Range
W 1/4	10	83N	3W
SW	10	83N	3W
S 1/4	10	83N	3W

SEAL

