

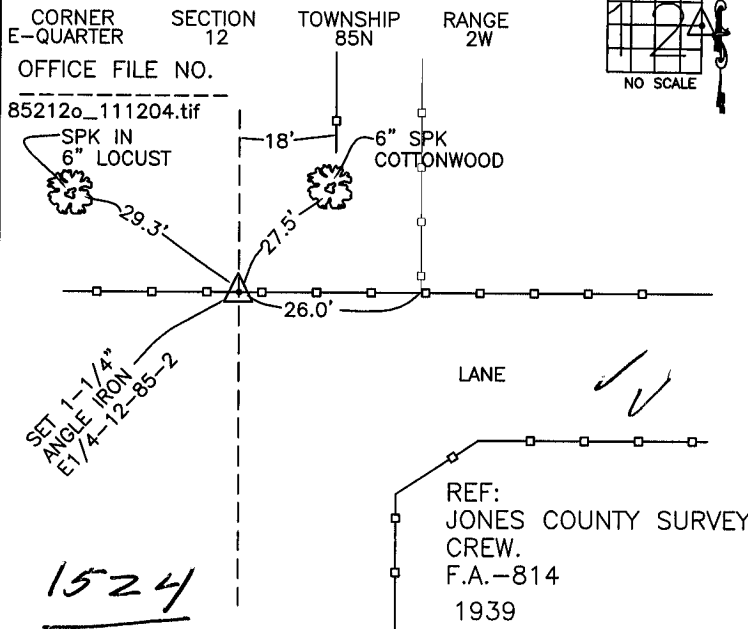
# THIS IS NOT A CERTIFICATION

JONES COUNTY ENGINEER'S OFFICE, 19501 HWY. 64, ANAMOSA, IOWA, 52205 (319)462-3785

## UNITED STATES PUBLIC LAND SURVEY CORNER CERTIFICATE

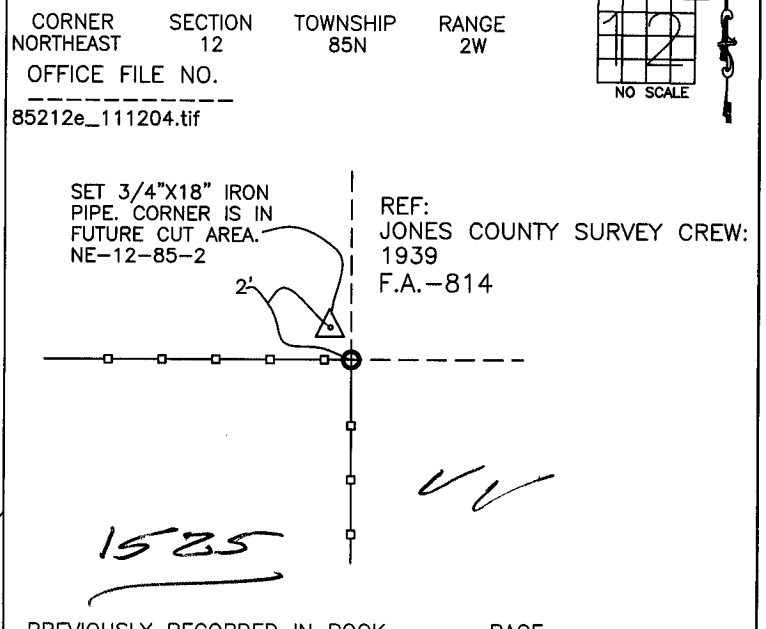
LAND SURVEY MONUMENTS SITUATED IN SECTION 12, TOWNSHIP 85  
NORTH, RANGE 2 WEST OF THE 5TH P.M., JONES COUNTY, IOWA

### CORNERS TO BE INDEXED



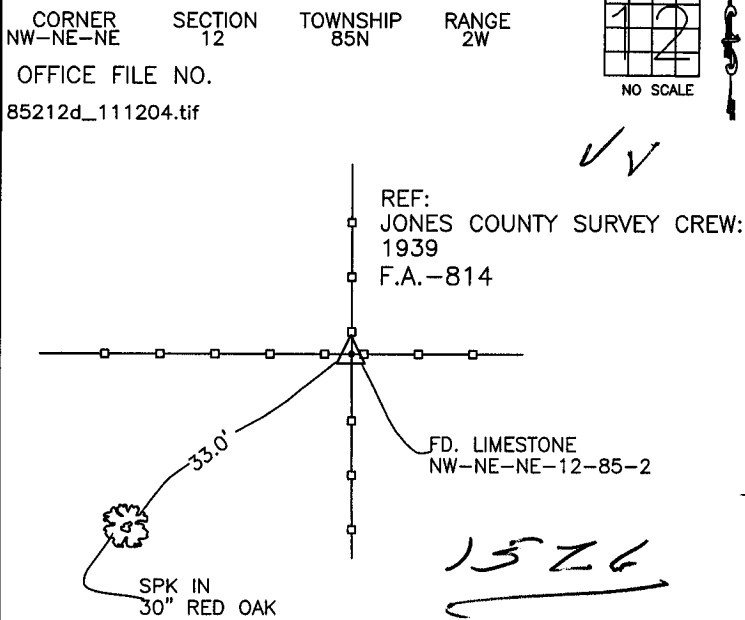
PREVIOUSLY RECORDED IN BOOK \_\_\_\_\_, PAGE \_\_\_\_\_, MONUMENT DESCRIPTION AND HOW ESTABLISHED SET \_\_\_\_\_  
ONE AND ONE QUARTER INCH X SIXTY ONE INCH ANGLE IRON. TIES AS INDICATED. EAST QUARTER CORNER SECTION 12, TOWNSHIP 85 NORTH, RANGE 2 WEST OF THE 5TH PRINCIPAL MERIDIAN, JONES COUNTY, IOWA.

### CORNERS TO BE INDEXED

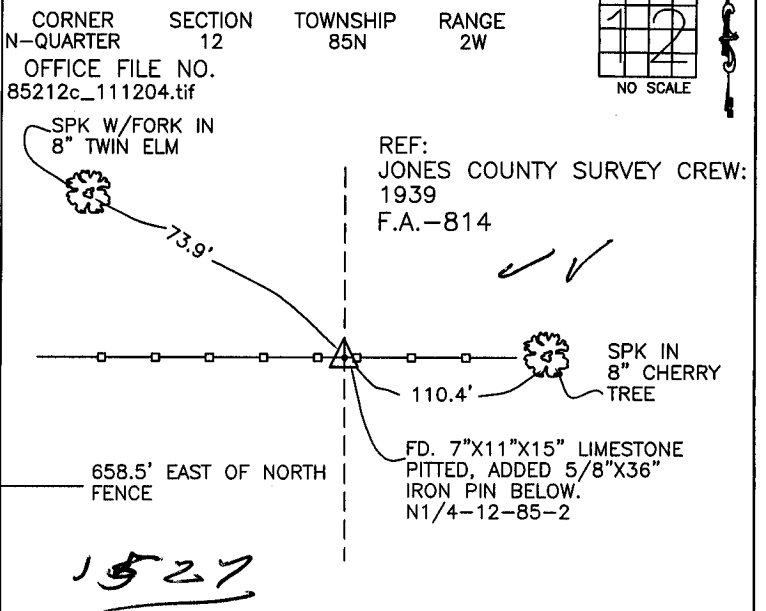


PREVIOUSLY RECORDED IN BOOK \_\_\_\_\_, PAGE \_\_\_\_\_, MONUMENT DESCRIPTION AND HOW ESTABLISHED SET \_\_\_\_\_  
3/4"x18" PIPE 2' NORTHWEST OF FENCE CORNER. TIED AS INDICATED. NORTHEAST CORNER SECTION 12, TOWNSHIP 85 NORTH, RANGE 2 WEST OF THE 5TH PRINCIPAL MERIDIAN, JONES COUNTY, IOWA.

### CORNERS TO BE INDEXED



### CORNERS TO BE INDEXED



658.5' EAST OF NORTH FENCE  
FD. 7"x11"x15" LIMESTONE PITTED, ADDED 5/8"x36" IRON PIN BELOW. N1/4-12-85-2