

COPY

FEE BOOK: 2010 0155 1/15/2010 12:07 PM  
REC FEES: \$9.00  
PAGES: 1 Marie Krutzfield, Recorder  
Jones County, Iowa

PREPARED BY: MATTHEW W. KRAUSE, MARTIN & WHITACRE SURVEYORS & ENGINEERS,  
P.O. BOX 413, MUSCATINE, IOWA 52761 / PHONE: 563-263-7691

**UNITED STATES PUBLIC LAND SURVEY CORNER CERTIFICATE OF**

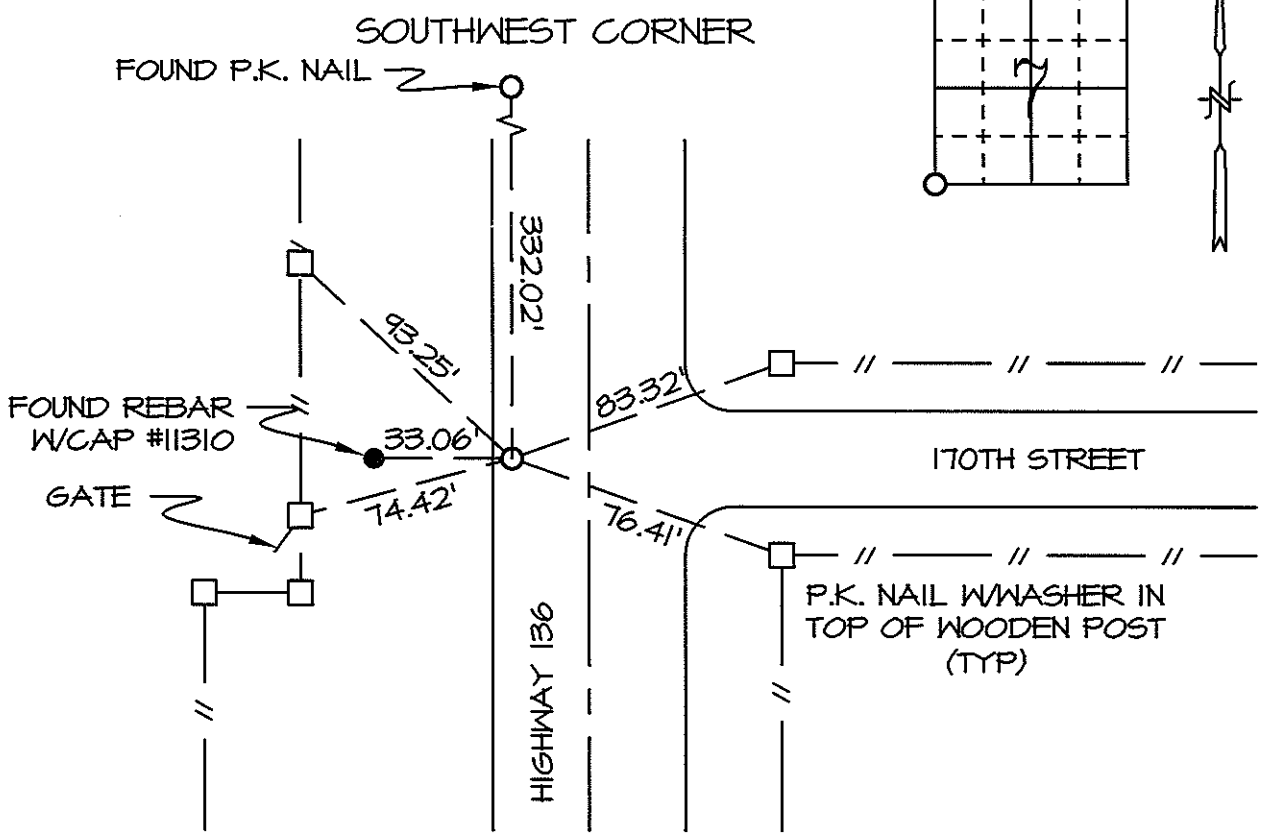
Land Survey Monuments situated in Section 7, Township T85N, Range RIW, of the Fifth Principal Meridian, JONES County, Iowa.

Reason for preparing certificate:  -No Certificate on File  -Monument Type Replaced/Differs  
 -Existing Ties Inaccurate  -Differing Position Accepted

Previously recorded in N/A in County Recorder's Office.

Monument Description and Remarks: SOUTHWEST CORNER - SET P.K. NAIL IN PREVIOUS LOCATION 0.27' FROM WEST EDGE OF PAVEMENT, 11.0' FROM CENTERLINE OF HIGHWAY 136 USING PLAT OF SURVEY BY CLARENCE J. WALTON FILE #2001-1150 IN JONES COUNTY RECORDERS OFFICE.

**PLAN-VIEW**

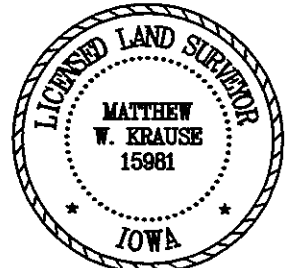


Drawn By: CCS Date: 01/06/10 M&W: Book JONES Page 78 Job No. 7183.09

I hereby certify that the survey work was completed and this certificate was prepared by me or under my direct personal supervision and that I am a duly licensed land surveyor under the laws of the state of Iowa.

Signature: Matthew W. Krause

Date: JAN 8 2010 License No. LS15981  
My License Expires 12/31/2011.



List Corners to be Indexed

Corners	Section	Twp	Range
SW	7	T85N	RIW

# THIS IS NOT A CERTIFICATION

JONES COUNTY ENGINEER'S OFFICE, 19501 HWY. 64, ANAMOSA, IOWA, 52205 (319)462-3785

## UNITED STATES PUBLIC LAND SURVEY CORNER CERTIFICATE

LAND SURVEY MONUMENTS SITUATED IN SECTION 13, TOWNSHIP 85  
NORTH, RANGE 2 WEST OF THE 5TH P.M., JONES COUNTY, IOWA

