

2002 0479
 FILED
 RECORDERS OFFICE
 JONES COUNTY IOWA

02 FEB -5 AM 11:13

MARIE KRUTZFIELD
 RECORDER 6.00 PM

PREPARED BY
 STEPHEN MICHAEL BRAIN, BRAIN ENGINEERING, INC., 777 10TH STREET, MARION, IOWA 52302 PH. (319) 373-1318

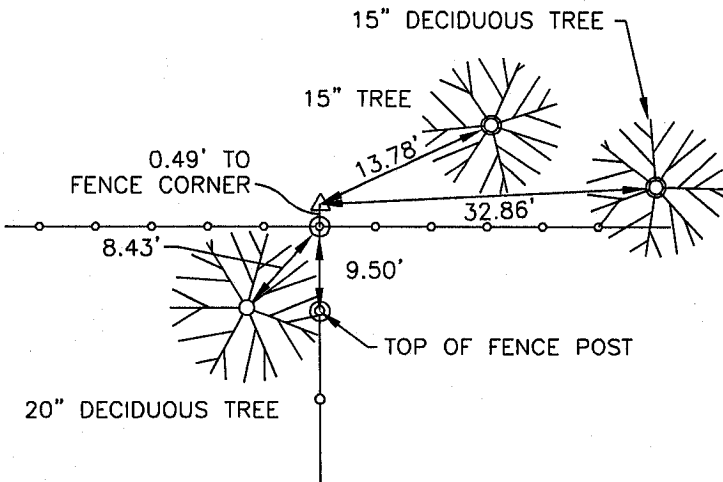
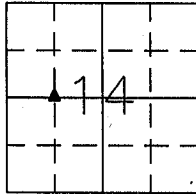
UNITED STATES PUBLIC LAND SURVEY CORNER CERTIFICATE

LAND SURVEY MONUMENTS SITUATED IN SECTION 14, TOWNSHIP 85 NORTH
 RANGE 2 WEST OF THE 5TH P.M., JONES COUNTY, IOWA.

NO SCALE



SW CORNER SE 1/4 NW 1/4



ALL TIES ARE SET "X" NAILS

852141-020402

PREVIOUSLY RECORDED IN BOOK _____ PAGE _____

MONUMENT DESCRIPTION AND HOW ESTABLISHED _____

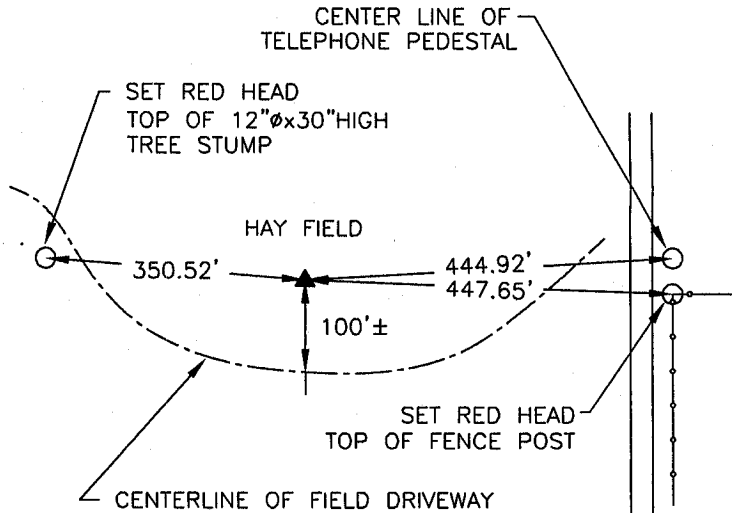
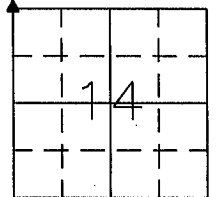
SET 1/2" REBAR w/YELLOW CAP #9647 AT MIDPOINT OF THE

NORTH LINE OF THE NW 1/4

NO SCALE



NW CORNER



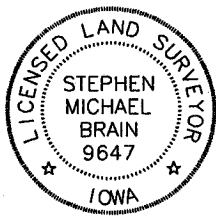
INDIGO ROAD

852152-020402

PREVIOUSLY RECORDED IN BOOK _____ PAGE _____

MONUMENT DESCRIPTION AND HOW ESTABLISHED _____

FOUND 1/2" REBAR w/RED CAP #11954, 8" DEEP



I hereby certify that this land surveying document and the related survey work was performed by me or under my direct personal supervision and that I am a duly licensed Land Surveyor under the laws of the State of Iowa.

Signed: *Stephen Michael Brain* Date: 2/4/02
 Stephen Michael Brain, L.S.
 My License Renewal Date is December 31, 2002
 License Number 9647
 Pages or sheets covered by this seal: 1/1

- A. THERE IS NO CERTIFICATE FOR THE CORNER ON FILE WITH THE RECORDER OF THE COUNTY IN WHICH THE CORNER IS LOCATED
- B. THE SURVEYOR IN RESPONSIBLE CHARGE OF THE LAND SURVEYING ACCEPTS A CORNER POSITION WHICH DIFFERS FROM THAT SHOWN IN THE PUBLIC RECORDS OF THE COUNTY IN WHICH THE CORNER IS LOCATED.
- C. THE CORNER MONUMENT IS REPLACED OR MODIFIED IN ANY WAY.
- D. THE REFERENCE TIES REFERRED TO IN AN EXISTING PUBLIC RECORD ARE NOT CORRECT.

CORNER	SECTION	TOWNSHIP	RANGE
SW CORNER SE 1/4 NW 1/4	14	T85N	R2W
NW CORNER	14	T85N	R2W

BRAIN ENGINEERING, INC.
 777 10TH STREET
 MARION, IOWA 52302
 (319) 373-1318

SEC_TIE.DWG

28261-10