

Marie Krutzfield, Recorder  
 Jones County, Iowa

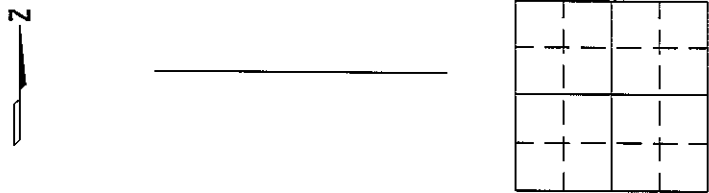
PREPARED BY

STEPHEN MICHAEL BRAIN, BRAIN ENGINEERING, INC., 1540 MIDLAND COURT NE, CEDAR RAPIDS, IOWA PH. (319) 294-9424

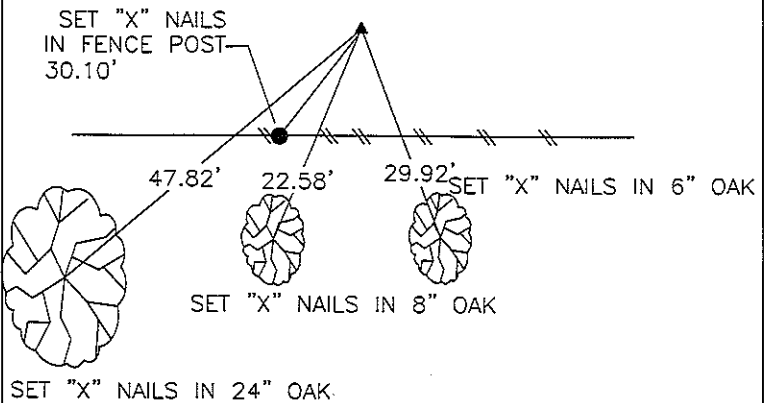
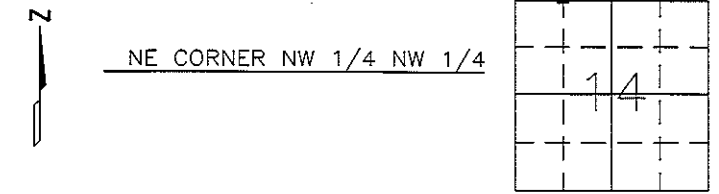
# UNITED STATES PUBLIC LAND SURVEY CORNER CERTIFICATE

LAND SURVEY MONUMENTS SITUATED IN SECTION 14, TOWNSHIP 85 NORTH  
 RANGE 2 WEST OF THE 5TH P.M., \_\_\_\_\_ JONES \_\_\_\_\_ COUNTY, IOWA.

NO SCALE



NO SCALE



YPC = YELLOW PLASTIC CAP

PREVIOUSLY RECORDED IN BOOK \_\_\_\_\_ PAGE \_\_\_\_\_

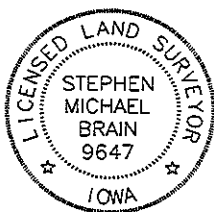
MONUMENT DESCRIPTION AND HOW ESTABLISHED \_\_\_\_\_

PREVIOUSLY RECORDED IN BOOK \_\_\_\_\_ PAGE \_\_\_\_\_

MONUMENT DESCRIPTION AND HOW ESTABLISHED \_\_\_\_\_

SET 1/2" REBAR WITH YPC #9647 AT MIDPOINT

OF NORTH LINE OF NW 1/4



I hereby certify that this land surveying document and the related survey work was performed by me or under my direct personal supervision and that I am a duly licensed Land Surveyor under the laws of the State of Iowa.

Signed \_\_\_\_\_ Date 2/28/07  
 Stephen Michael Brain, L.S.  
 My License Renewal Date Is December 31, 2008  
 License Number 9647  
 Pages or sheets covered by this seal: 1/1

- A.THERE IS NO CERTIFICATE FOR THE CORNER ON FILE WITH THE RECORDER OF THE COUNTY IN WHICH THE CORNER IS LOCATED
- B.THE SURVEYOR IN RESPONSIBLE CHARGE OF THE LAND SURVEYING ACCEPTS A CORNER POSITION WHICH DIFFERS FROM THAT SHOWN IN THE PUBLIC RECORDS OF THE COUNTY IN WHICH THE CORNER IS LOCATED.
- C.THE CORNER MONUMENT IS REPLACED OR MODIFIED IN ANY WAY.
- D.THE REFERENCE TIES REFERRED TO IN AN EXISTING PUBLIC RECORD ARE NOT CORRECT.

CORNERS TO BE INDEXED

CORNER	SECTION	TOWNSHIP	RANGE
NE CORNER	14	T85N	R 2 W
NW1/4 NW 1/4			

**BRAIN ENGINEERING, INC.**

1540 MIDLAND COURT NE  
 CEDAR RAPIDS, IOWA 52402 359906-10  
 (319) 294-9424