

85214e  
85214c

2002 0481

FILED  
RECORDERS OFFICE  
JONES COUNTY IOWA

02 FEB -5 AM 11:15

MARIE KRUTZFIELD  
RECORDER *6.00 PM*

PREPARED BY

STEPHEN MICHAEL BRAIN, BRAIN ENGINEERING, INC., 777 10TH STREET, MARION, IOWA 52302 PH. (319) 373-1318

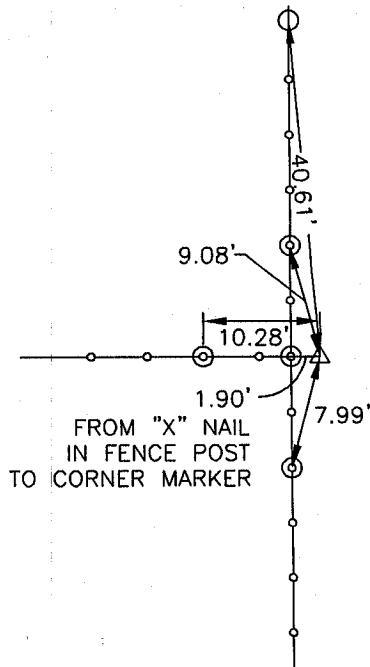
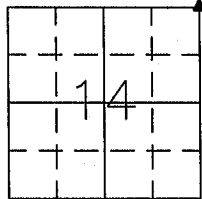
# UNITED STATES PUBLIC LAND SURVEY CORNER CERTIFICATE

LAND SURVEY MONUMENTS SITUATED IN SECTION 14, TOWNSHIP 85 NORTH  
RANGE 2 WEST OF THE 5TH P.M., \_\_\_\_\_ JONES \_\_\_\_\_ COUNTY, IOWA.

NO SCALE



NE CORNER



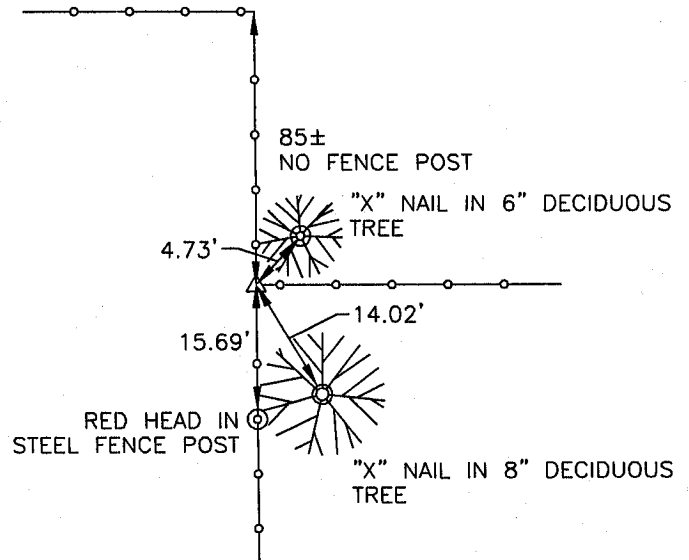
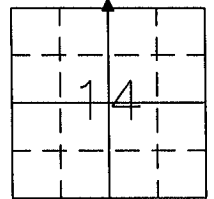
ALL TIES ARE SET "X" NAILS

PREVIOUSLY RECORDED IN BOOK \_\_\_\_\_ PAGE \_\_\_\_\_  
MONUMENT DESCRIPTION AND HOW ESTABLISHED \_\_\_\_\_  
DUG HOLE AND FOUND NOTHING. SET 1/2" REBAR w/YELLOW  
CAP #9647 1.9' EAST OF FENCE INTERSECTION.

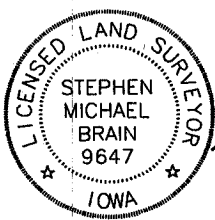
NO SCALE



N 1/4 CORNER



PREVIOUSLY RECORDED IN BOOK \_\_\_\_\_ PAGE \_\_\_\_\_  
MONUMENT DESCRIPTION AND HOW ESTABLISHED \_\_\_\_\_  
DUG HOLE AND FOUND NOTHING. SET 1/2" REBAR w/YELLOW  
CAP #9647 0.90' WEST OF STEEL FENCE CORNER



I hereby certify that this land surveying document and the related survey work was performed by me or under my direct personal supervision and that I am a duly licensed Land Surveyor under the laws of the State of Iowa.

Signed: *[Signature]* Date: 2/4/02  
Stephen Michael Brain, L.S.  
My License Renewal Date is December 31, 2002  
License Number 9647  
Pages or sheets covered by this seal: 1/1

- A. THERE IS NO CERTIFICATE FOR THE CORNER ON FILE WITH THE RECORDER OF THE COUNTY IN WHICH THE CORNER IS LOCATED
- B. THE SURVEYOR IN RESPONSIBLE CHARGE OF THE LAND SURVEYING ACCEPTS A CORNER POSITION WHICH DIFFERS FROM THAT SHOWN IN THE PUBLIC RECORDS OF THE COUNTY IN WHICH THE CORNER IS LOCATED.
- C. THE CORNER MONUMENT IS REPLACED OR MODIFIED IN ANY WAY.
- D. THE REFERENCE TIES REFERRED TO IN AN EXISTING PUBLIC RECORD ARE NOT CORRECT.

CORNER	SECTION	TOWNSHIP	RANGE
NE CORNER	14	T85N	R2W
N 1/4 CORNER	14	T85N	R2W

**BRAIN ENGINEERING, INC.**  
777 10TH STREET  
MARION, IOWA 52302  
(319) 373-1318

SEC\_TIE.DWG

28261-10