

2004 0062

FILED
RECORDERS OFFICE
JONES COUNTY IOWA

04 JAN -6 PM 2:15

MARIE KRUTZFIELD
RECORDER *No fee*

J.D. Tjepkes, L.S. JONES COUNTY ENGINEER'S OFFICE, 19501 HWY. 64, ANAMOSA, IOWA, 52205 (319)462-3785

UNITED STATES PUBLIC LAND SURVEY CORNER CERTIFICATE

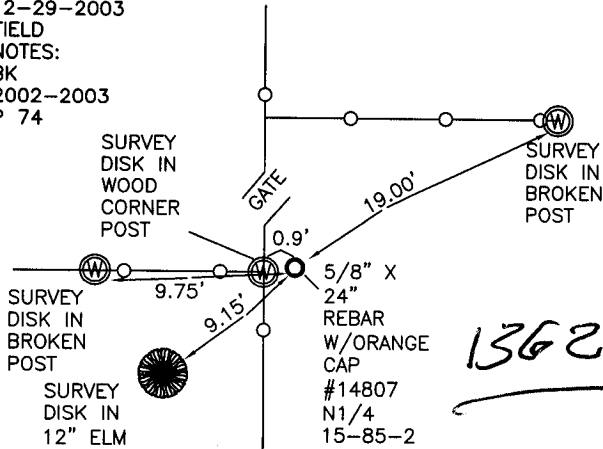
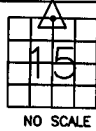
LAND SURVEY MONUMENTS SITUATED IN SECTION 15, TOWNSHIP 85
NORTH, RANGE 2 WEST OF THE 5TH P.M., JONES COUNTY, IOWA

CORNERS TO BE INDEXED

CORNER SECTION TOWNSHIP RANGE
N 1/4 15 85N 2W

OFFICE FILE NO.
85215c_010504.jpg

12-29-2003
FIELD NOTES:
BK
2002-2003
P 74



1362

PREVIOUSLY RECORDED IN BOOK N/A, PAGE N/A
MONUMENT DESCRIPTION AND HOW ESTABLISHED

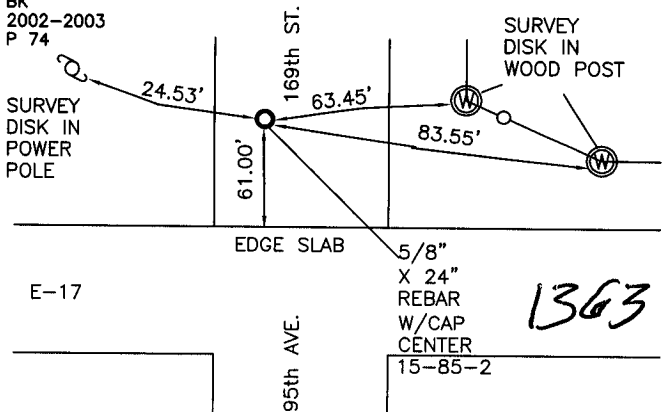
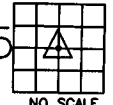
PER PHYSICAL EVIDENCE, FOUND OLD FENCE POST. SET 5/8\"/>

CORNERS TO BE INDEXED

CORNER SECTION TOWNSHIP RANGE
CENTER 15 85N 2W

OFFICE FILE NO.
85215m_010504.jpg

12-29-2003
FIELD NOTES:
BK
2002-2003
P 74



1363

PREVIOUSLY RECORDED IN BOOK N/A, PAGE N/A
MONUMENT DESCRIPTION AND HOW ESTABLISHED

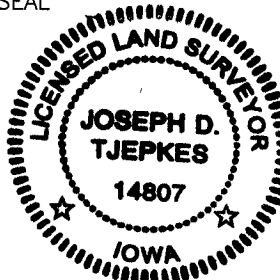
SET 5/8\"/>

I hereby declare that this plat, survey or report was made by me or under my direct personal supervision and that I am a duly registered Land Surveyor under the laws of the State of Iowa.

Signed: *[Signature]* 1-06-04

Joseph D. Tjepkes L.S. Iowa Reg. No. 14807
My Registration Renewal Date is December 31, 2004

SEAL



J.D. Tjepkes LS 14807
JONES COUNTY
ENGINEER'S OFFICE

19501 HWY. 64,
ANAMOSA, IOWA,
52205 (319)462-3785

L