

2004 0063

FILED
RECORDERS OFFICE
JONES COUNTY IOWA

04 JAN -6 PM 2:16

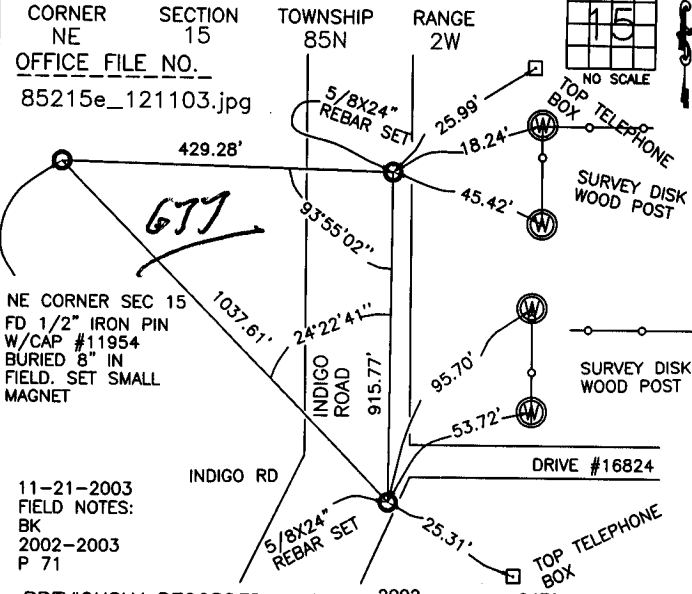
MARIE KRUTZFIELD
RECORDER No Fee

J.D. Tjepkes, LS. JONES COUNTY ENGINEER'S OFFICE, 19501 HWY. 64, ANAMOSA, IOWA, 52205 (319)462-3785

UNITED STATES PUBLIC LAND SURVEY CORNER CERTIFICATE

LAND SURVEY MONUMENTS SITUATED IN SECTION 15, TOWNSHIP 85
NORTH, RANGE 2 WEST OF THE 5TH P.M., JONES COUNTY, IOWA

CORNERS TO BE INDEXED

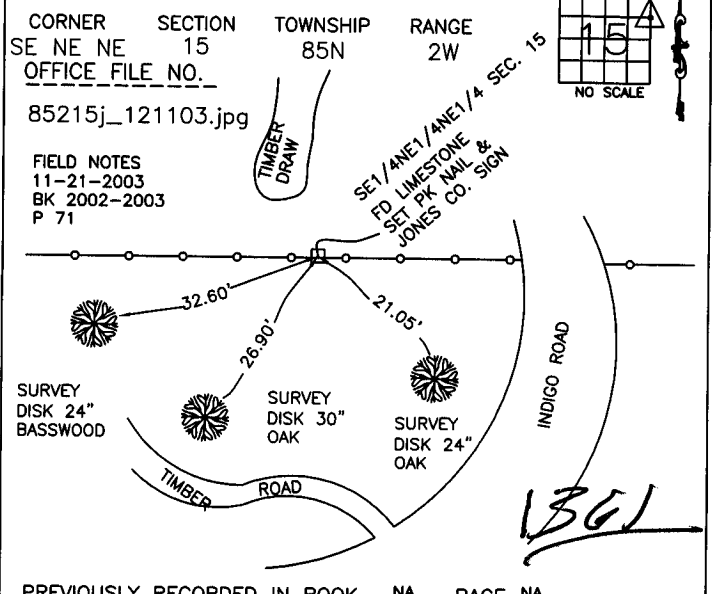


NE CORNER SEC 15
FD 1/2" IRON PIN
W/CAP #11954
BURIED 8" IN
FIELD. SET SMALL
MAGNET

11-21-2003
FIELD NOTES:
BK
2002-2003
P 71

PREVIOUSLY RECORDED IN BOOK 2002, PAGE 0479
MONUMENT DESCRIPTION AND HOW ESTABLISHED
PER RECORDED SEC. COR. TIES FOUND 1/2" REBAR W/CAP #11954 BURIED
8" IN FIELD. SET SMALL MAGNET ALONG SIDE OF PIN. RETIED AS INDICATED.
NE CORNER, SECTION 15, TOWNSHIP 85 NORTH, RANGE 2 WEST, JONES
COUNTY, IOWA.

CORNERS TO BE INDEXED



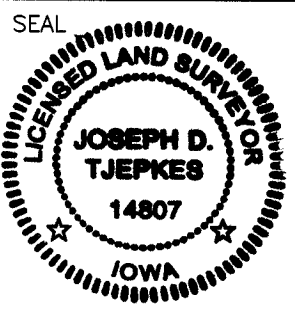
SE NE NE 15
OFFICE FILE NO. 85215j_121103.jpg

FIELD NOTES
11-21-2003
BK 2002-2003
P 71

PREVIOUSLY RECORDED IN BOOK NA, PAGE NA
MONUMENT DESCRIPTION AND HOW ESTABLISHED
PER PLAT OF SURVEY RECORDED BY LS MICKELSON (#7036) BK "J" P 119,
FOUND LIMESTONE 12" ABOVE GROUND IN FENCELINE. SET PK NAIL IN TOP
OF STONE & SET SMALL JONES CO. SIGN ALONG SIDE. TIES AS INDICATED.
SE 1/4 NE 1/4 NE 1/4, SECTION 15, TOWNSHIP 85 NORTH, RANGE 2 WEST,
JONES COUNTY, IOWA.

I hereby declare that this plat, survey or report was made by me or under my direct personal supervision and that I am a duly registered Land Surveyor under the laws of the State of Iowa.

Signed: *[Signature]* 507
04
1-26-03



J.D. TJEPKES LS 14807
JONES COUNTY
ENGINEER'S OFFICE

19501 HWY. 64,
ANAMOSA, IOWA,
52205 (319)462-3785

5

2002 0479
 FILED
 RECORDERS OFFICE
 JONES COUNTY IOWA

02 FEB -5 AM 11:13

MARIE KRUTZFIELD
 RECORDER 6.00 PM

PREPARED BY
 STEPHEN MICHAEL BRAIN, BRAIN ENGINEERING, INC., 777 10TH STREET, MARION, IOWA 52302 PH. (319) 373-1318

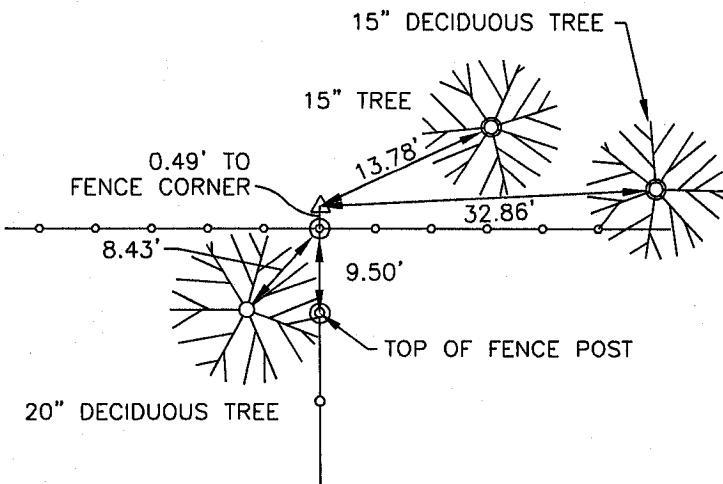
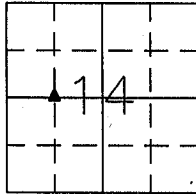
UNITED STATES PUBLIC LAND SURVEY CORNER CERTIFICATE

LAND SURVEY MONUMENTS SITUATED IN SECTION 14, TOWNSHIP 85 NORTH
 RANGE 2 WEST OF THE 5TH P.M., JONES COUNTY, IOWA.

NO SCALE



SW CORNER SE 1/4 NW 1/4



ALL TIES ARE SET "X" NAILS

852141-020402

PREVIOUSLY RECORDED IN BOOK _____ PAGE _____

MONUMENT DESCRIPTION AND HOW ESTABLISHED _____

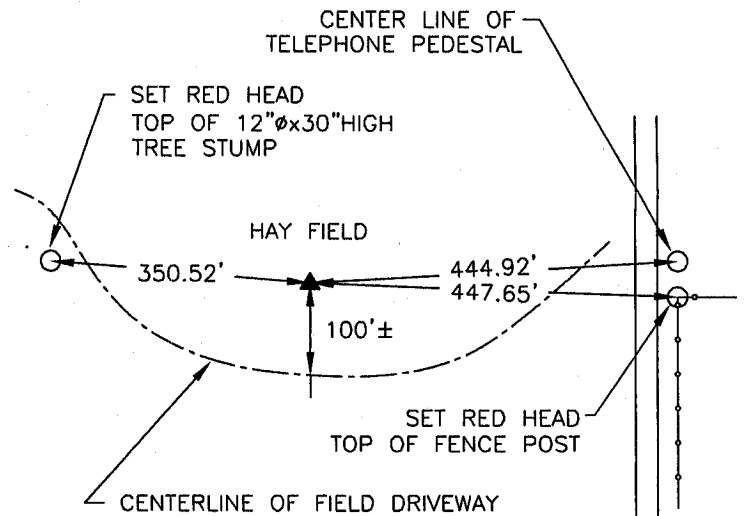
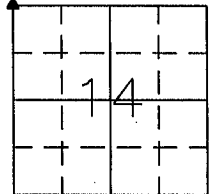
SET 1/2" REBAR w/YELLOW CAP #9647 AT MIDPOINT OF THE

NORTH LINE OF THE NW 1/4

NO SCALE



NW CORNER



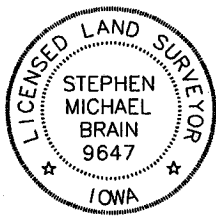
INDIGO ROAD

852152-020402

PREVIOUSLY RECORDED IN BOOK _____ PAGE _____

MONUMENT DESCRIPTION AND HOW ESTABLISHED _____

FOUND 1/2" REBAR w/RED CAP #11954, 8" DEEP



I hereby certify that this land surveying document and the related survey work was performed by me or under my direct personal supervision and that I am a duly licensed Land Surveyor under the laws of the State of Iowa.

Signed: *Stephen Michael Brain* Date: 2/4/02

Stephen Michael Brain, L.S.
 My License Renewal Date is December 31, 2002
 License Number 9647
 Pages or sheets covered by this seal: 1/1

- A. THERE IS NO CERTIFICATE FOR THE CORNER ON FILE WITH THE RECORDER OF THE COUNTY IN WHICH THE CORNER IS LOCATED
- B. THE SURVEYOR IN RESPONSIBLE CHARGE OF THE LAND SURVEYING ACCEPTS A CORNER POSITION WHICH DIFFERS FROM THAT SHOWN IN THE PUBLIC RECORDS OF THE COUNTY IN WHICH THE CORNER IS LOCATED.
- C. THE CORNER MONUMENT IS REPLACED OR MODIFIED IN ANY WAY.
- D. THE REFERENCE TIES REFERRED TO IN AN EXISTING PUBLIC RECORD ARE NOT CORRECT.

CORNER	SECTION	TOWNSHIP	RANGE
SW CORNER SE 1/4 NW 1/4	14	T85N	R2W
NW CORNER	14	T85N	R2W

BRAIN ENGINEERING, INC.
 777 10TH STREET
 MARION, IOWA 52302
 (319) 373-1318

SEC_TIE.DWG

28261-10

SECTION CORNER CERTIFICATE

OF
 LAND SURVEY MONUMENTS SITUATED IN SECTION 10, TOWNSHIP 85 NORTH,
 RANGE 2 WEST, OF THE FIFTH PRINCIPAL MERIDIAN, JONES, COUNTY, IOWA.

PREVIOUSLY RECORDED IN BOOK _____ AT PAGE _____

FOR RECORDER'S USE

REASON FOR PREPARING CERTIFICATE:

- A) THERE IS NO CERTIFICATE FOR THE CORNER ON FILE WITH THE RECORDER OF THE COUNTY IN WHICH THE CORNER IS LOCATED.
- B) CORNER POSITION DIFFERS FROM THAT SHOWN IN THE PUBLIC RECORDS OF THE COUNTY IN WHICH THE CORNER IS LOCATED.
- C) THE CORNER MONUMENT HAS BEEN REPLACED OR MODIFIED.
- D) THE REFERENCE TIES REFERRED TO IN AN EXISTING PUBLIC RECORD ARE INCORRECT.

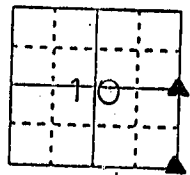
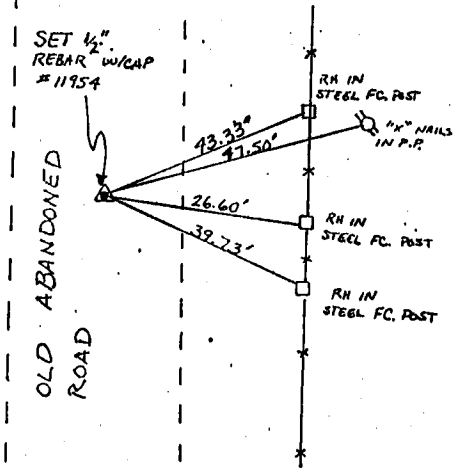
MONUMENT DESCRIPTION AND REMARKS:

E 1/4 CORNER SECT. 10-T85N-R2W SET 1/2" REBAR w/L.S. CAP #11954 ON
APPROX. C. OF ABANDONED ROAD RIGHT OF WAY FLUSH W/ GROUND

SE 1/4 CORNER SECTION 10-T85N-R2W SET 1/2" REBAR w/L.S. CAP #11954 NORTH
OF FIELD DRIVE AND FLUSH WITH GROUND

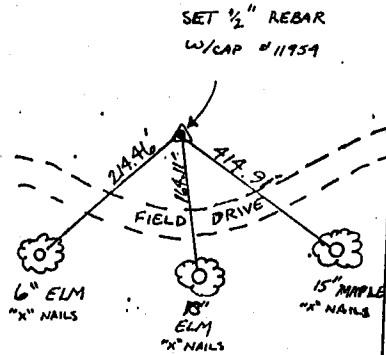
RECOVERY TIE DRAWING

E 1/4 COR 10-85-2



NOT TO SCALE

SE 1/4 COR 10-85-2



4-12-94 M.S.

I, DANIEL J. JOHNSON, CERTIFY THAT THE CORNER LOCATION(S) SHOWN ON THIS RECORD WERE DETERMINED BY ME OR UNDER MY DIRECTION AND CONTROL AND THAT THIS U.S. PUBLIC LAND SURVEY MONUMENT RECORD IS CORRECT AND COMPLETE TO THE BEST OF MY KNOWLEDGE AND BELIEF.



Daniel J. Johnson
 DANIEL J. JOHNSON L.S. NO 11954 DATE 3-29-94

DRAWING	GOVERNMENT CORNER 5/8" DC PIN SET CENTERLINE CASTING FENCE LINE R.O.W. LINE	SHEET NO: PROJECT NO: U.S. PUBLIC LAND SURVEY RECORD BERNARD BARKER SURVEY	HALL AND HALL ENGINEERS, INC. 226 29TH STREET DRIVE S.E. CEDAR RAPIDS, IOWA 52403 319-362-9540
	DWN SJM CHK DJJ APP DJJ	DATE 7-14-93 SCALE NONE	P NO R NO J 4855