

COPY

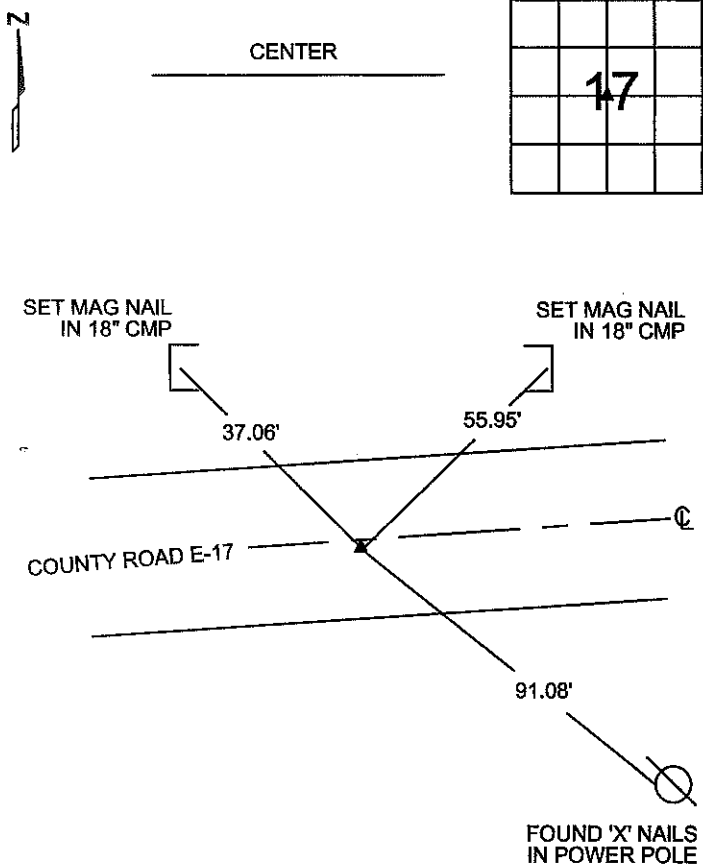
Jones County Marie Krutzfield Recorder  
 Fee Book 2011 1740  
 07/07/2011 @1042AM # Pages 1  
 ZSC SEC COR CERT  
 Total Fees: \$7.00

PREPARED BY  
 STEPHEN MICHAEL BRAIN, BRAIN ENGINEERING, INC., 1540 MIDLAND COURT NE, CEDAR RAPIDS, IOWA PH. (319) 294-9424

# UNITED STATES PUBLIC LAND SURVEY CORNER CERTIFICATE

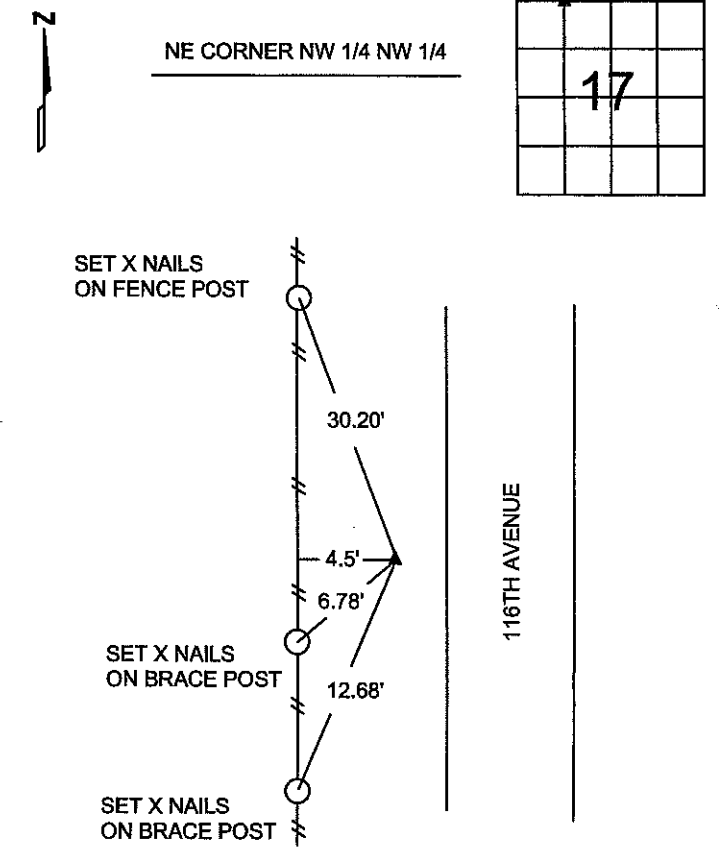
LAND SURVEY MONUMENTS SITUATED IN SECTION 17, TOWNSHIP 85 NORTH  
 RANGE 2 WEST OF THE 5TH P.M., JONES COUNTY, IOWA.

NO SCALE



PREVIOUSLY RECORDED IN BOOK \_\_\_\_\_ PAGE \_\_\_\_\_  
 MONUMENT DESCRIPTION AND HOW ESTABLISHED \_\_\_\_\_  
 FOUND CUT 'X' 0.6' SOUTH OF CENTERLINE. PREVIOUSLY TIED BY  
 MCGUIRE #9019 11/15/91

NO SCALE



PREVIOUSLY RECORDED IN BOOK K PAGE 139  
 MONUMENT DESCRIPTION AND HOW ESTABLISHED \_\_\_\_\_  
 FOUND 5/8" REBAR W/ YELLOW PLASTIC CAP #6581 6" BELOW THE  
 SURFACE AS PER MEASUREMENTS ON PLAT OF RETRACEMENT  
 SURVEY BOOK K PAGE 139



I hereby certify that this land surveying document  
 and the related survey work was performed by me  
 or under my direct personal supervision and that  
 I am a duly licensed Land Surveyor under the laws  
 of the State of Iowa.  
 Signed \_\_\_\_\_ Date 7/6/11  
 Stephen Michael Brain, L.S.  
 My License Renewal Date is December 31, 2012  
 License Number 9647  
 Pages or sheets covered by this seal: 1/1

- A.THERE IS NO CERTIFICATE FOR THE CORNER ON FILE WITH THE RECORDER OF THE COUNTY IN WHICH THE CORNER IS LOCATED
- B.THE SURVEYOR IN RESPONSIBLE CHARGE OF THE LAND SURVEYING ACCEPTS A CORNER POSITION WHICH DIFFERS FROM THAT SHOWN IN THE PUBLIC RECORDS OF THE COUNTY IN WHICH THE CORNER IS LOCATED.
- C.THE CORNER MONUMENT IS REPLACED OR MODIFIED IN ANY WAY.
- D.THE REFERENCE TIES REFERRED TO IN AN EXISTING PUBLIC RECORD ARE NOT CORRECT.

CORNERS TO BE INDEXED			
CORNER	SECTION	TOWNSHIP	RANGE
NE CORNER	17	T 85 N	R 2 W
NW 1/4 NW 1/4			
CENTER	17	T 85 N	R 2 W

**BRAIN ENGINEERING, INC.**  
 1540 MIDLAND COURT NE  
 CEDAR RAPIDS, IOWA 52402 439911-10  
 (319) 294-9424

# UNITED STATES PUBLIC LAND SURVEY CORNER CERTIFICATE

OF

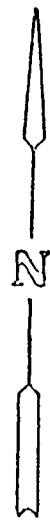
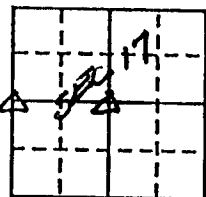
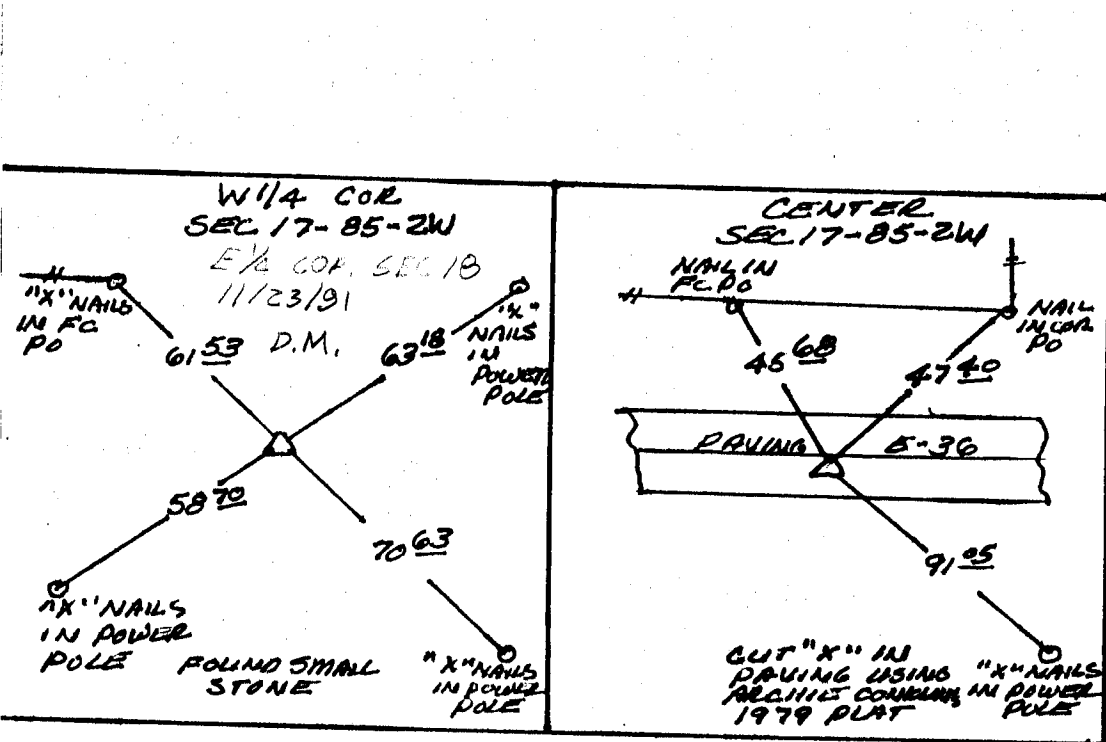
Land Survey Monuments situated in Section 17, Township 85 NORTH, Range 2 WEST, of the Fifth Principal Meridian, JONES County, Iowa.  
Previously recorded in DOES NOT APPLY in County Recorder's Office.

(Show reason for preparing this certificate, the evidence and detailed procedures used in establishing the corner positions and monumentation found or placed.)

Monument Description and Remarks: RE-SET THE CENTER OF SECTION 17  
USING ARCHIE CONKLIN'S 1979 PLAT. FOUND SMALL STONE  
AT THE LOCATION OF THE W 1/4 COR USING TIES  
FROM THE COUNTY ENGINEER'S OFFICE

### PLAN - VIEW

(Show a minimum of three reference ties to durable physical objects, relevant monuments and physical conditions that will enable recovery of the corner.)



I hereby certify that the survey work was completed and this certificate was prepared by me or under my direct personal supervision and that I am a duly registered land surveyor under the laws of the state of Iowa.

Signature: Larry R. McGuire  
Name typed or printed: LARRY R. MCGUIRE

Date: 11/15/91 Reg. No. 9019

Corners	List Corners to be Indexed		
	Section	Twp	Range
W 1/4	17	85	2W
CENTER	17	85	2W



SEAL