

SECTION CORNER CERTIFICATE

OF

LAND SURVEY MONUMENTS SITUATED IN SECTION 8, TOWNSHIP 85 NORTH,
RANGE 2 WEST, OF THE FIFTH PRINCIPAL MERIDIAN, JONES, COUNTY, IOWA.

PREVIOUSLY RECORDED IN BOOK _____ AT PAGE _____.

FOR RECORDER'S USE

REASON FOR PREPARING CERTIFICATE:

- A) THERE IS NO CERTIFICATE FOR THE CORNER ON FILE WITH THE RECORDER OF THE COUNTY IN WHICH THE CORNER IS LOCATED.
- B) CORNER POSITION DIFFERS FROM THAT SHOWN IN THE PUBLIC RECORDS OF THE COUNTY IN WHICH THE CORNER IS LOCATED.
- C) THE CORNER MONUMENT HAS BEEN REPLACED OR MODIFIED.
- D) THE REFERENCE TIES REFERRED TO IN AN EXISTING PUBLIC RECORD ARE INCORRECT.

MONUMENT DESCRIPTION AND REMARKS:

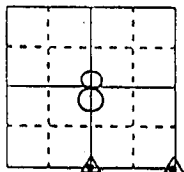
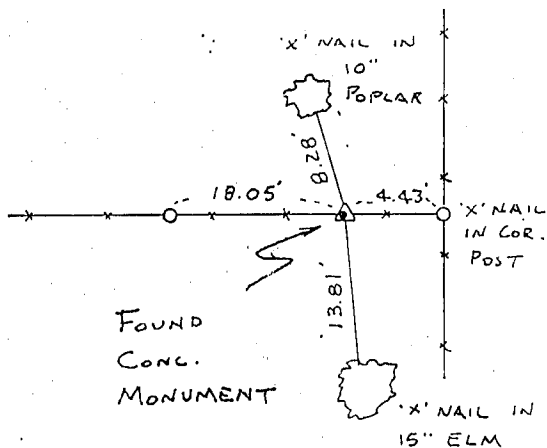
S'4 CORNER SECTION 8, T85N, R2W FOUND CONC. MON.
FLUSH WITH GROUND ON WEST FENCE LINE AND 4.3'
WEST OF NORTH-SOUTH FENCE

S.E. CORNER SECTION 8, T85N, R2W FD. 4" x 12" x 15" LIMESTONE SET
1/2" REBAR W/ L.S. CAP # 11954 ALONG SIDE OF STONE

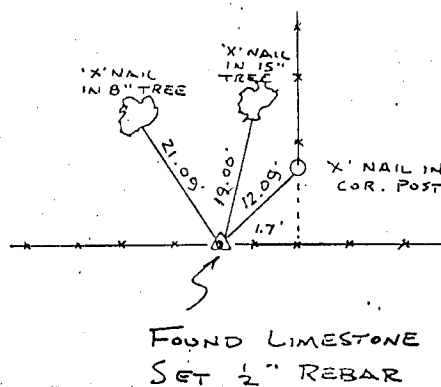
RECOVERY TIE DRAWING

S'4 CORNER 8-85-2

S.E. CORNER 8-85-2



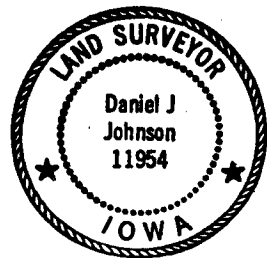
NOT TO SCALE



3-2-93 ON CARD NE COR SEC 17, M.S.

I, DANIEL J. JOHNSON, CERTIFY THAT THE CORNER LOCATION(S) SHOWN ON THIS RECORD WERE DETERMINED BY ME OR UNDER MY DIRECTION AND CONTROL AND THAT THIS U.S. PUBLIC LAND SURVEY MONUMENT RECORD IS CORRECT AND COMPLETE TO THE BEST OF MY KNOWLEDGE AND BELIEF.

Daniel J. Johnson 12-30-92
DANIEL J. JOHNSON L.S. NO 11954 DATE



DZCML	GOVERNMENT CORNER 5/8" TIC PIN SET CENTERLINE EXISTING FENCE LINE R.O.W. LINE	SHEET TITLE: U.S. PUBLIC LAND SURVEY RECORD PROJECT TITLE: MIKE MCDONOUGH SURVEY	HALL AND HALL ENGINEERS, INC. 226 29TH STREET DRIVE S.E. CEDAR RAPIDS, IOWA 52403 319-362-9548
	DW N R.W.B. CHK D.J.J. APP G.D.M. DATE 7-7-92 SCALE NONE	P NO OT 25 P NO 4690	