

2001 0361

FILED  
RECORDERS OFFICE  
JONES COUNTY IOWA

01 FEB -6 PM 1:54

MARIE KRUTZFIELD  
RECORDER *No Fee*

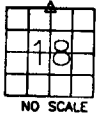
J.D. TJEPKES, LS. JONES COUNTY ENGINEER'S OFFICE, 19501 HWY. 64, ANAMOSA, IOWA, 52205 (319)462-3785

# UNITED STATES PUBLIC LAND SURVEY CORNER CERTIFICATE

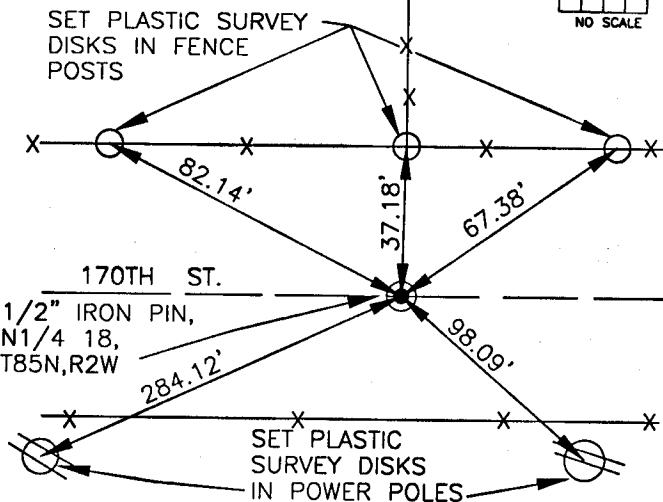
LAND SURVEY MONUMENTS SITUATED IN SECTION 18, TOWNSHIP 85  
NORTH, RANGE 2 WEST OF THE 5TH P.M., JONES COUNTY, IOWA

### CORNERS TO BE INDEXED

CORNER	SECTION	TOWNSHIP	RANGE
N-1/4	18	85N	2W



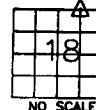
SET PLASTIC SURVEY  
DISKS IN FENCE  
POSTS



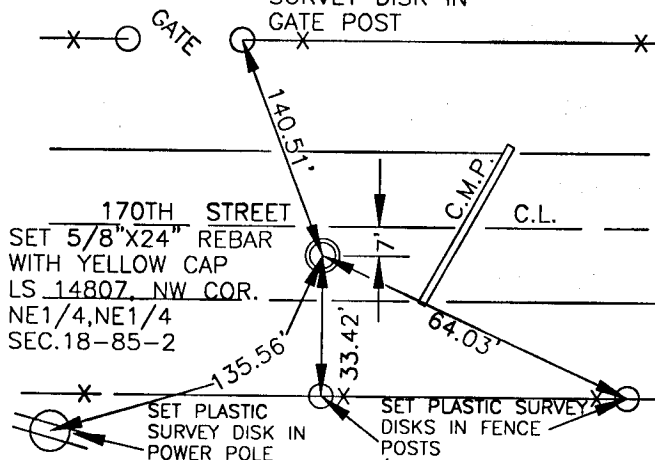
PREVIOUSLY RECORDED IN BOOK 336, PAGE 205  
MONUMENT DESCRIPTION AND HOW ESTABLISHED FOUND  
1/2" IRON PIN 0.6' BELOW ROAD SURFACE  
PER RECORDED TIES AT COUNTY ENGINEER'S OFFICE  
SET NEW REFERENCE POINTS AND TIED OUT AS  
INDICATED. N1/4 COR. 18-85-2, JONES COUNTY, IA.

### CORNERS TO BE INDEXED

CORNER	SECTION	TOWNSHIP	RANGE
NW, NE 1/4 NE 1/4	18	85N	2W



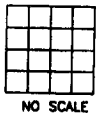
SET PLASTIC  
SURVEY DISK IN  
GATE POST



PREVIOUSLY RECORDED IN BOOK N/A, PAGE N/A  
MONUMENT DESCRIPTION AND HOW ESTABLISHED SET  
5/8" X 24" REBAR WITH YELLOW CAP LS 14807  
0.4' BELOW ROAD SURFACE ON SPLIT FROM  
NE COR. SEC. 18 TO N-1/4 COR. SEC. 18,  
T85N, R2W, JONES COUNTY, IOWA SET REFERENCE  
POINTS, TIED OUT AS INDICATED.

### CORNERS TO BE INDEXED

CORNER	SECTION	TOWNSHIP	RANGE
N1/4 18, T85N, R2W	18	85N	2W



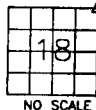
1/2" IRON PIN,  
N1/4 18,  
T85N, R2W

SET PLASTIC  
SURVEY DISKS  
IN POWER POLES

PREVIOUSLY RECORDED IN BOOK 336, PAGE 205  
MONUMENT DESCRIPTION AND HOW ESTABLISHED FOUND  
1/2" IRON PIN 0.6' BELOW ROAD SURFACE  
PER RECORDED TIES AT COUNTY ENGINEER'S OFFICE  
SET NEW REFERENCE POINTS AND TIED OUT AS  
INDICATED. N1/4 COR. 18-85-2, JONES COUNTY, IA.

### CORNERS TO BE INDEXED

CORNER	SECTION	TOWNSHIP	RANGE
N.E.	18	85N	2W



170TH STREET

PLASTIC SURVEY  
DISK IN POWER  
POLE

PLASTIC  
SURVEY DISK  
IN FENCE POST

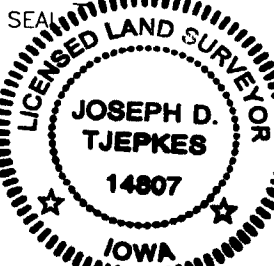
PREVIOUSLY RECORDED IN BOOK 336, PAGE 205  
MONUMENT DESCRIPTION AND HOW ESTABLISHED FOUND  
1/2" IRON PIN 0.4' BELOW ROAD SURFACE PER  
RECORDED TIES, SET NEW REFERENCE POINTS  
AND TIED OUT AS INDICATED. NE COR. SEC. 18,  
T85N, R2W, JONES COUNTY, IOWA

I hereby declare that this plat, survey or report was made by me or under my direct personal supervision and that I am a duly registered Land Surveyor under the laws of the State of Iowa.

Signed:

*Joseph D. Tjepkes* 1-2-2001

Joseph D. Tjepkes L.S. Iowa Reg. No. 14807  
My Registration Renewal Date is December 31, 2002

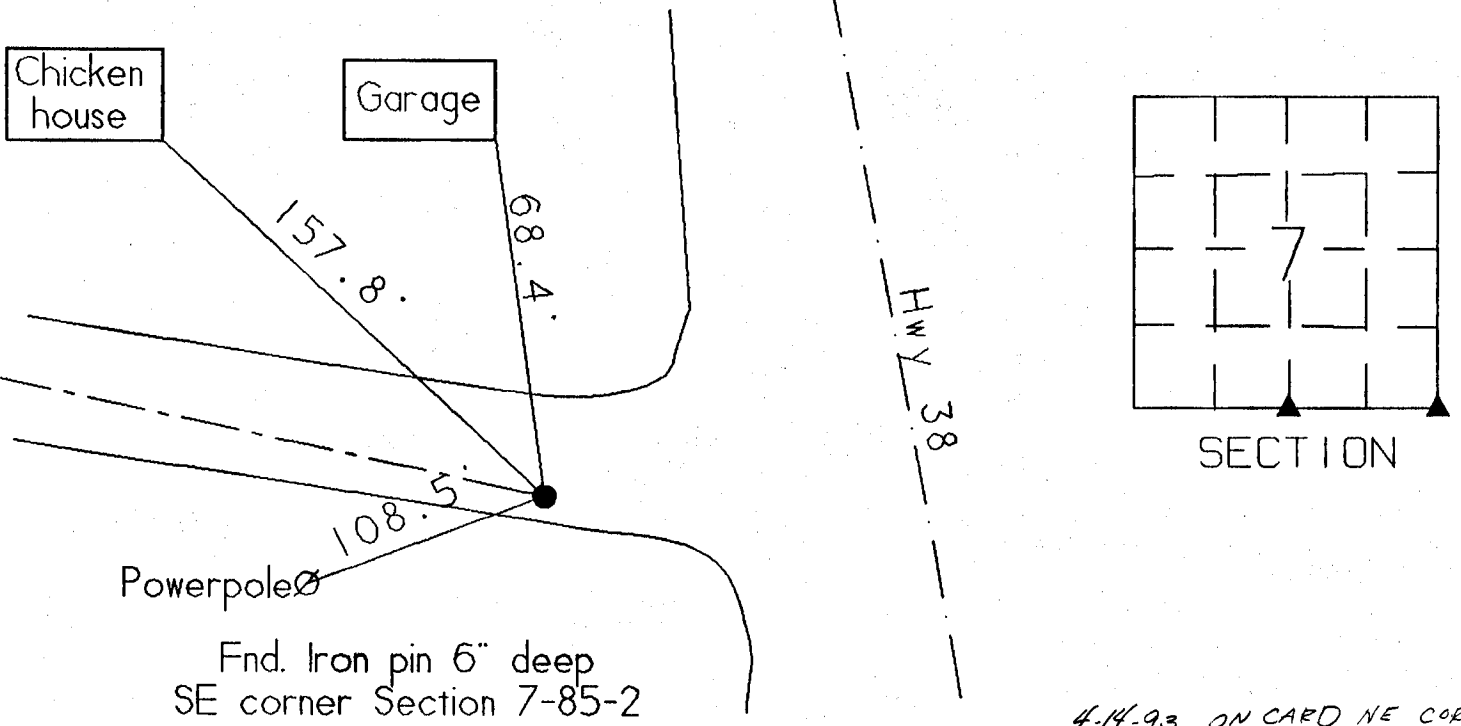


J.D. TJEPKES LS 14807  
JONES COUNTY  
ENGINEER'S OFFICE

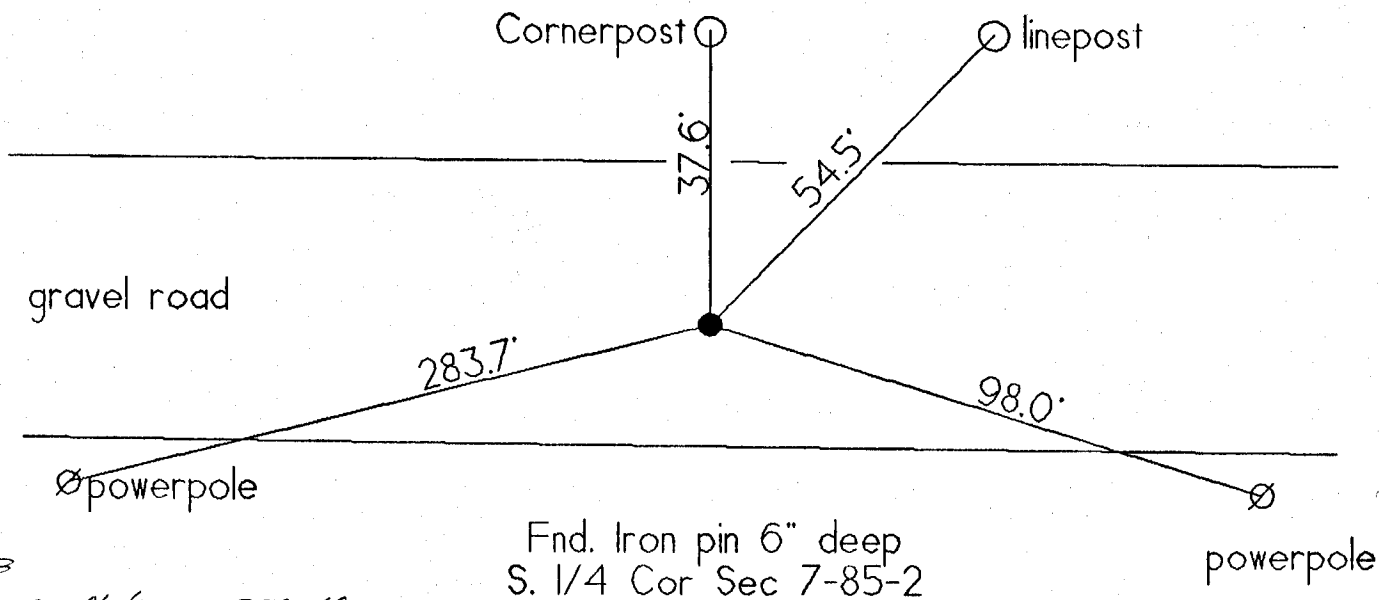
19501 HWY. 64,  
ANAMOSA, IOWA,  
52205 (319)462-3785

# United States Public Land Survey Corner Certificate

Land survey monument located in Section 7, Township 85 North,  
Range 2 of the 5th Principal Meridian, Jones County, Iowa



4-14-93 ON CARD NE COR  
SEC 18. M.S.



4-14-93  
ON CARD N 1/4 COR SEC 18.  
M.S.

### Certification

I hereby certify that this plat and survey was made by me or under my direct supervision and that I am a duly Registered Land Surveyor under the laws of the State of Iowa.

Harold E. Dillon  
Harold E. Dillon Reg.#6581

4/11/93  
date

