

2001 0361

FILED
RECORDERS OFFICE
JONES COUNTY IOWA

01 FEB -6 PM 1:54

MARIE KRUTZFIELD
RECORDER *No Fee*

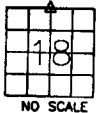
J.D. TJEPKES, LS. JONES COUNTY ENGINEER'S OFFICE, 19501 HWY. 64, ANAMOSA, IOWA, 52205 (319)462-3785

UNITED STATES PUBLIC LAND SURVEY CORNER CERTIFICATE

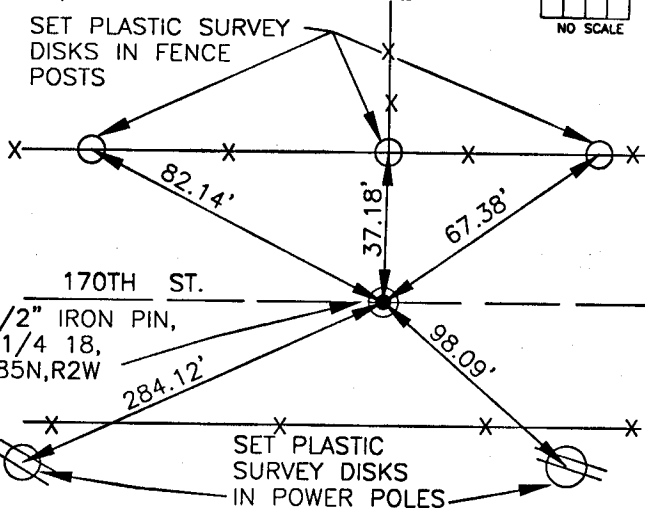
LAND SURVEY MONUMENTS SITUATED IN SECTION 18, TOWNSHIP 85
NORTH, RANGE 2 WEST OF THE 5TH P.M., JONES COUNTY, IOWA

CORNERS TO BE INDEXED

CORNER SECTION TOWNSHIP RANGE
N-1/4 18 85N 2W



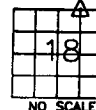
SET PLASTIC SURVEY
DISKS IN FENCE
POSTS



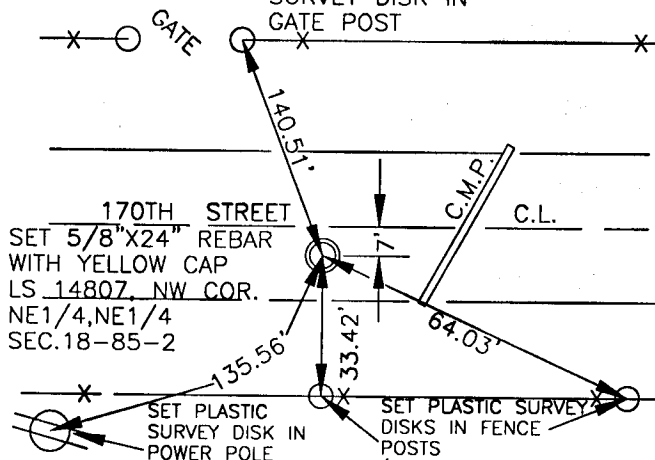
PREVIOUSLY RECORDED IN BOOK 336, PAGE 205
MONUMENT DESCRIPTION AND HOW ESTABLISHED FOUND
1/2" IRON PIN 0.6' BELOW ROAD SURFACE
PER RECORDED TIES AT COUNTY ENGINEER'S OFFICE
SET NEW REFERENCE POINTS AND TIED OUT AS
INDICATED. N1/4 COR. 18-85-2, JONES COUNTY, IA.

CORNERS TO BE INDEXED

CORNER SECTION TOWNSHIP RANGE
NW, NE 1/4 18 85N 2W



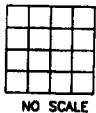
SET PLASTIC
SURVEY DISK IN
GATE POST



PREVIOUSLY RECORDED IN BOOK N/A, PAGE N/A
MONUMENT DESCRIPTION AND HOW ESTABLISHED SET
5/8" X 24" REBAR WITH YELLOW CAP LS 14807
0.4' BELOW ROAD SURFACE ON SPLIT FROM
NE COR. SEC. 18 TO N-1/4 COR. SEC. 18,
T85N, R2W, JONES COUNTY, IOWA SET REFERENCE
POINTS, TIED OUT AS INDICATED.

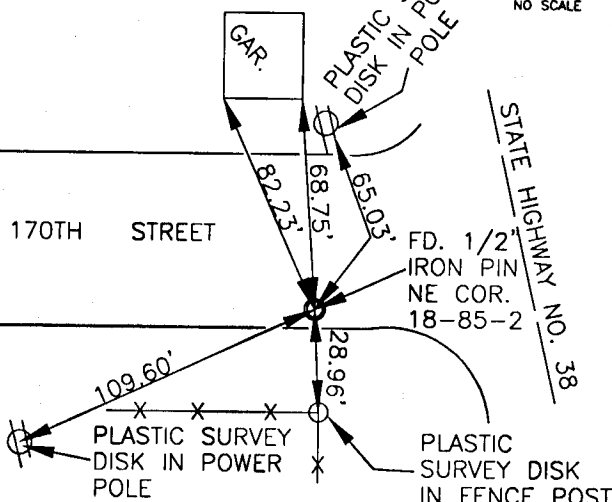
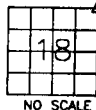
CORNERS TO BE INDEXED

CORNER SECTION TOWNSHIP RANGE



CORNERS TO BE INDEXED

CORNER SECTION TOWNSHIP RANGE
N.E. 18 85N 2W



PREVIOUSLY RECORDED IN BOOK _____, PAGE _____
MONUMENT DESCRIPTION AND HOW ESTABLISHED _____

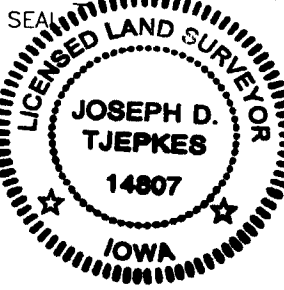
PREVIOUSLY RECORDED IN BOOK 336, PAGE 205
MONUMENT DESCRIPTION AND HOW ESTABLISHED FOUND
1/2" IRON PIN 0.4' BELOW ROAD SURFACE PER
RECORDED TIES, SET NEW REFERENCE POINTS
AND TIED OUT AS INDICATED. NE COR. SEC. 18,
T85N, R2W, JONES COUNTY, IOWA

I hereby declare that this plat, survey or report
was made by me or under my direct personal
supervision and that I am a duly registered Land
Surveyor under the laws of the State of Iowa.

Signed:

Joseph D. Tjepkes 1-2-2001

Joseph D. Tjepkes L.S. Iowa Reg. No. 14807
My Registration Renewal Date is December 31, 2002

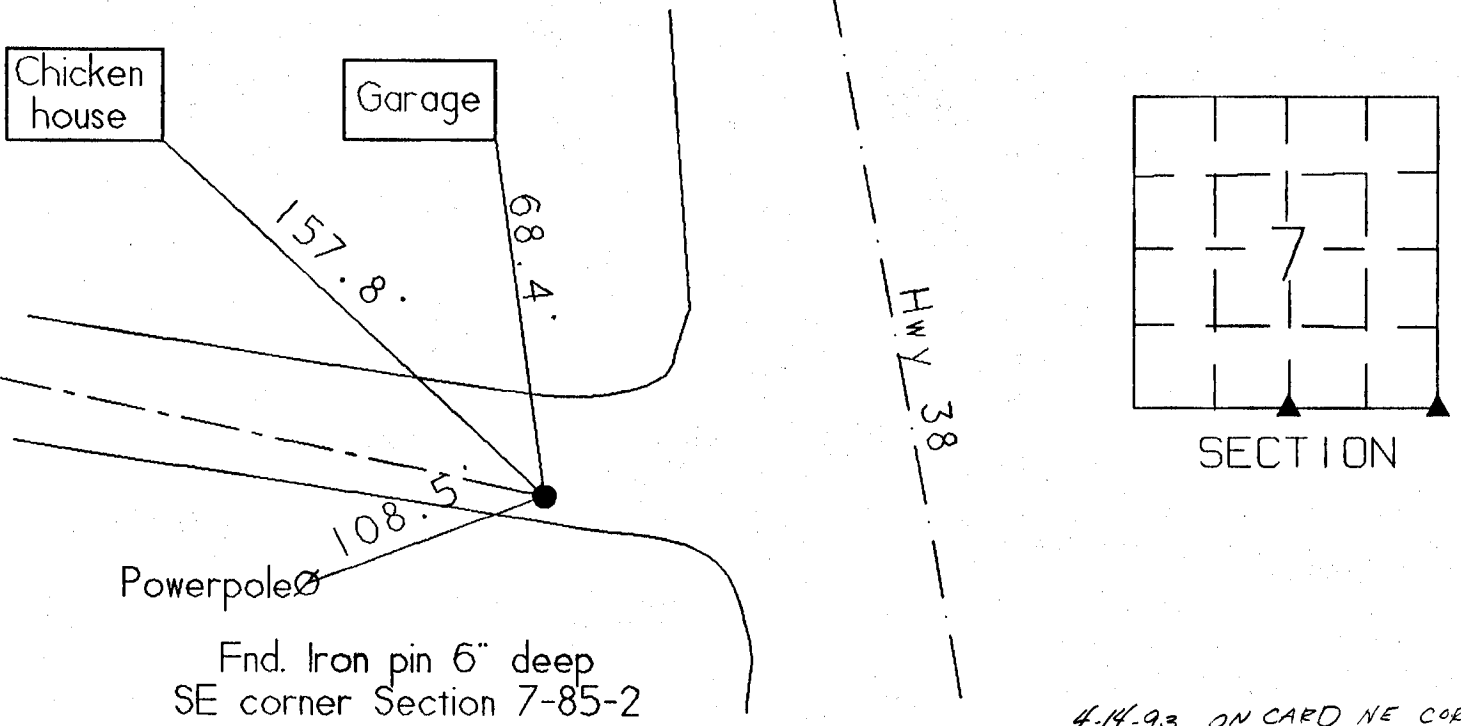


J.D. TJEPKES LS 14807
JONES COUNTY
ENGINEER'S OFFICE

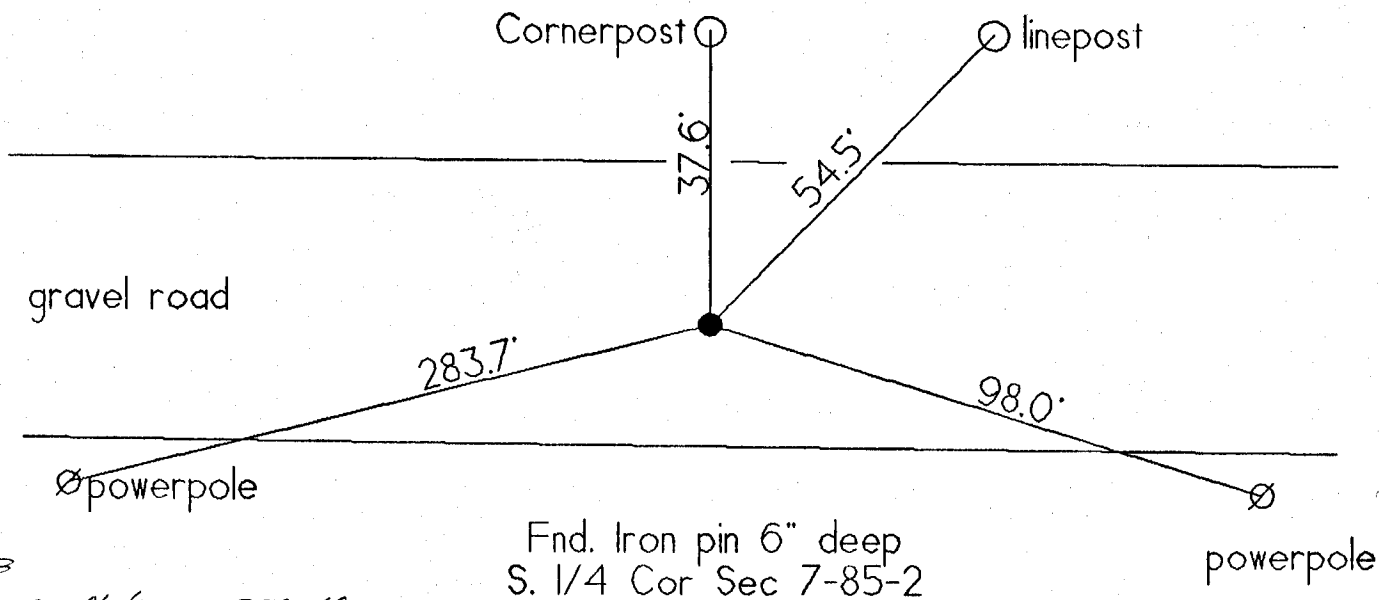
19501 HWY. 64,
ANAMOSA, IOWA,
52205 (319)462-3785

United States Public Land Survey Corner Certificate

Land survey monument located in Section 7, Township 85 North,
Range 2 of the 5th Principal Meridian, Jones County, Iowa



4-14-93 ON CARD NE COR
SEC 18. M.S.



4-14-93
ON CARD N 1/4 COR SEC 18.
M.S.

Fnd. Iron pin 6" deep
S. 1/4 Cor Sec 7-85-2

Certification

I hereby certify that this plat and survey was made by me or under my direct supervision and that I am a duly Registered Land Surveyor under the laws of the State of Iowa.

Harold E. Dillon
Harold E. Dillon Reg.#6581

4/11/93
date

