

Jones County  
 Marie Krutzfield, Recorder  
**Fee Book 2010 1021**

04/26/2010 @0903AM  
 ZSC SEC COR CERT  
 Book: Page: # Pages: 3  
 Total Fees: \$0.00

*Copy*

PREPARED BY  
**CLARENCE J. WALTON, JONES COUNTY ENGINEER'S OFFICE, 19501 HWY. 64, ANAMOSA, IOWA, 52205 (319) 462-3785**

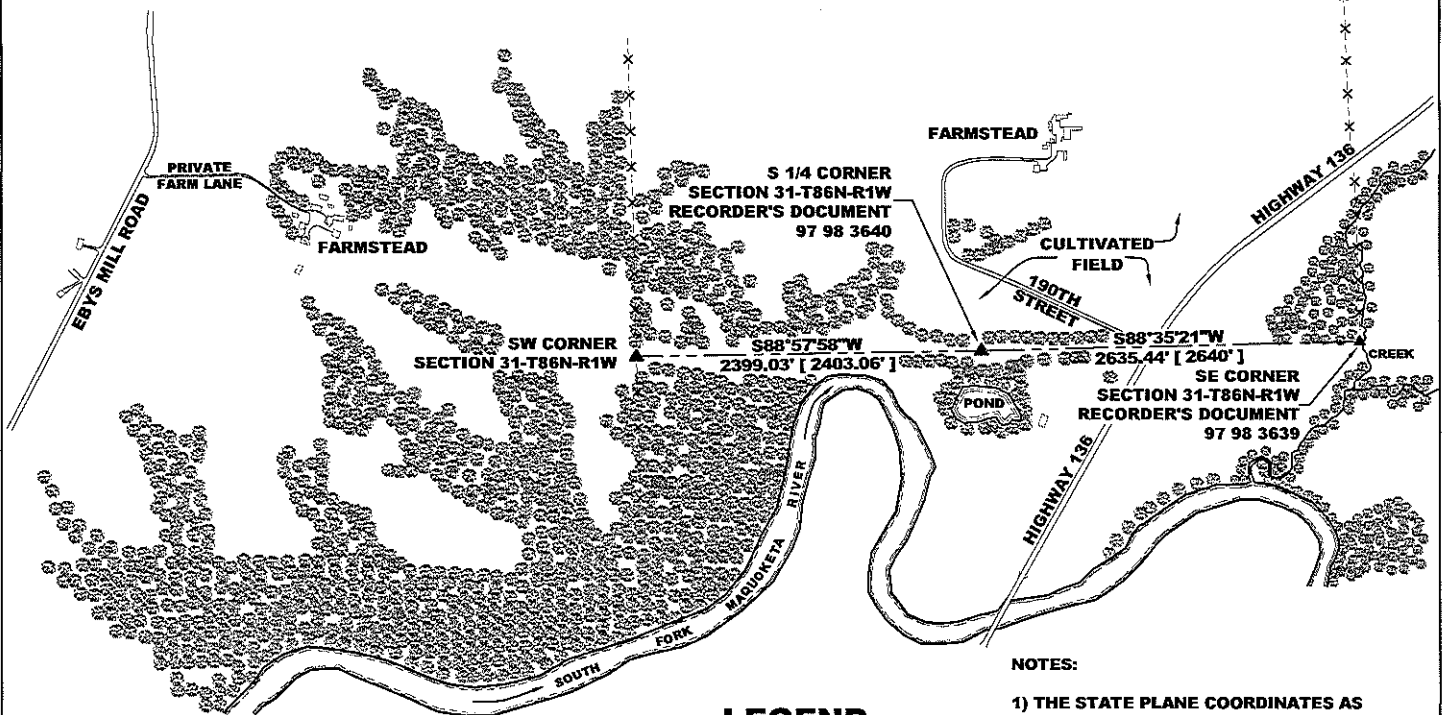
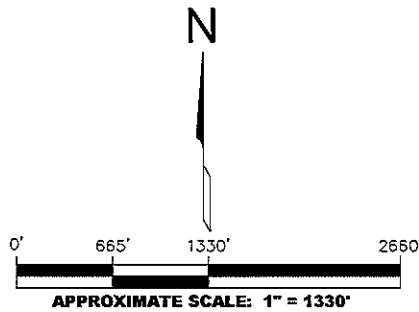
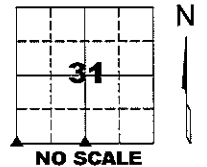
**COVER SHEET**  
**UNITED STATES PUBLIC LAND SURVEY CORNER CERTIFICATE**  
**LAND SURVEY MONUMENTS SITUATED IN SECTION 31, TOWNSHIP 86 NORTH,**  
**RANGE 1 WEST OF THE 5TH PRINCIPAL MERIDIAN, JONES COUNTY, IOWA.**

SW CORNER SECTION 31-T86N-R1W  
 STATE PLANE COORDINATE  
 NAD 83 IOWA NORTH  
 N 3548911.66  
 E 5594666.33

S 1/4 CORNER SECTION 31-T86N-R1W  
 STATE PLANE COORDINATE  
 NAD 83 IOWA NORTH  
 N 3548954.96  
 E 5597064.97

SE CORNER SECTION 31-T86N-R1W  
 STATE PLANE COORDINATE  
 NAD 83 IOWA NORTH  
 N 3549019.84  
 E 5599699.61

SECTION TOWNSHIP RANGE  
 31 T86N R1W



**NOTES:**

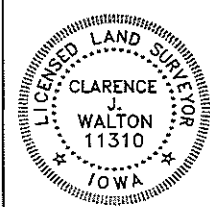
- 1) THE STATE PLANE COORDINATES AS SHOWN ARE FOR CONVENIENCE ONLY. THE TIES AS SHOWN SHOULD BE USED TO REPLACE THE CORNER, IF DESTROYED.
- 2) COORDINATES AS SHOWN ARE GRID COORDINATES AND BASED ON JONES COUNTY G.P.S. CONTROL NETWORK WHICH IN TURN IS BASED ON NAD 83 IOWA NORTH DATUM.
- 3) BASIS OF BEARINGS ARE BASED ON JONES COUNTY G.P.S. CONTROL NETWORK.
- 4) ALL MEASUREMENTS ARE IN FEET AND DECIMALS THEREOF. DISTANCES ON THIS COVER SHEET ARE GRID DISTANCES.
- 5) APPROXIMATE SCALE IS GIVEN IN ORDER TO FACILITATE NAVIGATION TO CORNERS IN CASE GPS IS NOT USED.

**LEGEND**

- HARDWOOD TIMBER
- FENCE LINE
- RECORDED AS PER GOV FIELD

**VICINITY MAP**

**PAGE 1 of 3**



I hereby certify that this land surveying document and the related survey work was performed by me or under my direct personal supervision and that I am a duly registered Land Surveyor under the laws of the State of Iowa.  
 Signed: *Clarence J. Walton* 4/26/10  
 Clarence J. Walton, L.S.  
 My Registration Renewal Date is December 31, 2011  
 Iowa License Number 11310  
 Pages or sheets covered by this seal: 1 of 1.

**JONES COUNTY ENGINEER'S OFFICE**



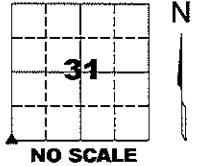
19501 HWY. 64, ANAMOSA, IOWA 52205  
 (319) 462-3785

# UNITED STATES PUBLIC LAND SURVEY CORNER CERTIFICATE

**LAND SURVEY MONUMENTS SITUATED IN SECTION 31, TOWNSHIP 86 NORTH,  
 RANGE 1 WEST OF THE 5TH PRINCIPAL MERIDIAN, JONES COUNTY, IOWA.**

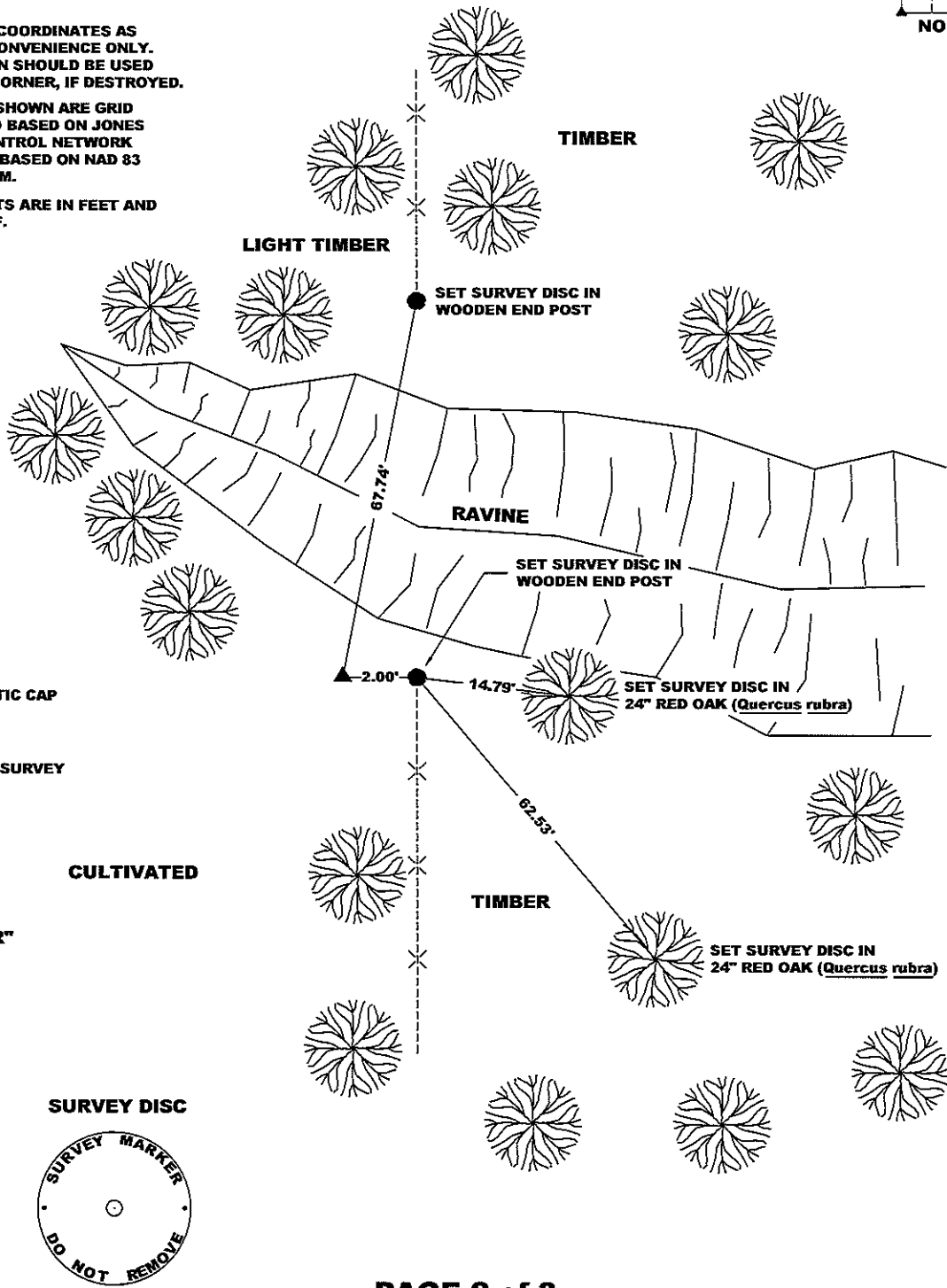
STATE PLANE COORDINATE  
 NAD 83 IOWA NORTH  
 N 3548911.66  
 E 5594666.33

CORNER SECTION TOWNSHIP RANGE  
 SW CORNER 31 T86N R1W



**NOTES:**

- 1) THE STATE PLANE COORDINATES AS SHOWN ARE FOR CONVENIENCE ONLY. THE TIES AS SHOWN SHOULD BE USED TO REPLACE THE CORNER, IF DESTROYED.
- 2) COORDINATES AS SHOWN ARE GRID COORDINATES AND BASED ON JONES COUNTY G.P.S. CONTROL NETWORK WHICH IN TURN IS BASED ON NAD 83 IOWA NORTH DATUM.
- 3) ALL MEASUREMENTS ARE IN FEET AND DECIMALS THEREOF.



**PAGE 2 of 3**

PREVIOUSLY RECORDED IN N/A  
**MONUMENT DESCRIPTION AND HOW ESTABLISHED** FOUND BROKEN PIECES OF 8" X 12" X 29" LIMESTONE ON TOP OF 1/2" X 36" WROUGHT IRON PIN (PER JONES COUNTY ENGINEERING TIES FROM 1939) 4" BELOW EXISTING SURFACE. LOWERED WROUGHT IRON PIN AND STONE PIECES AS THIS AREA IS ERODING INTO AN ADJACENT RAVINE. SET 5/8" X 48" REBAR WITH SMALL MAGNET ON NORTH SIDE OF STONE FOR DETECTION PURPOSE. ALSO SET 2 STEEL FENCE POSTS WITH YELLOW "SURVEY MARKER" SIGNS ( 1 FACING WEST AND 1 FACING EAST) AS WITNESS TO CORNER AND TO HOLD STONES IN PLACE.  
 FIELD BOOK 344, PAGE 75. DATE OF SURVEY: 11/3/09



I hereby certify that this land surveying document and the related survey work was performed by me or under my direct personal supervision and that I am a duly registered Land Surveyor under the laws of the State of Iowa.  
 Signed: *Clarence J. Walton* 4/26/10  
 Clarence J. Walton, L.S.  
 My Registration Renewal Date is December 31, 2011  
 Iowa License Number 11310  
 Pages or sheets covered by this seal: 1 of 1.

- A. THERE IS NO CERTIFICATE FOR THE CORNER ON FILE WITH THE RECORDER OF THE COUNTY IN WHICH THE CORNER IS LOCATED.
- B. THE CORNER MONUMENT HAS BEEN REPLACED OR MODIFIED.
- C. THE SURVEYOR IN RESPONSIBLE CHARGE OF THE LAND SURVEYING ACCEPTS A CORNER POSITION THAT DIFFERS FROM THAT SHOWN IN THE PUBLIC RECORDS OF THE COUNTY IN WHICH THE CORNER IS LOCATED.
- D. THE REFERENCE TIES REFERRED TO IN AN EXISTING PUBLIC RECORD NO LONGER EXIST.
- E. EXISTING CORNER TIES UPDATED.

CORNERS TO BE INDEXED			
CORNER	SECTION	TOWNSHIP	RANGE
SW CORNER	31	86N	1W
NW CORNER	6	85N	1W
NE CORNER	1	85N	2W
SE CORNER	36	86N	2W

**JONES COUNTY ENGINEER'S OFFICE**

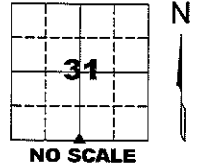
19501 HWY. 64, ANAMOSA, IOWA 52205  
 (319) 462-3785

# UNITED STATES PUBLIC LAND SURVEY CORNER CERTIFICATE

LAND SURVEY MONUMENTS SITUATED IN SECTION 31, TOWNSHIP 86 NORTH,  
 RANGE 1 WEST OF THE 5TH PRINCIPAL MERIDIAN, JONES COUNTY, IOWA.

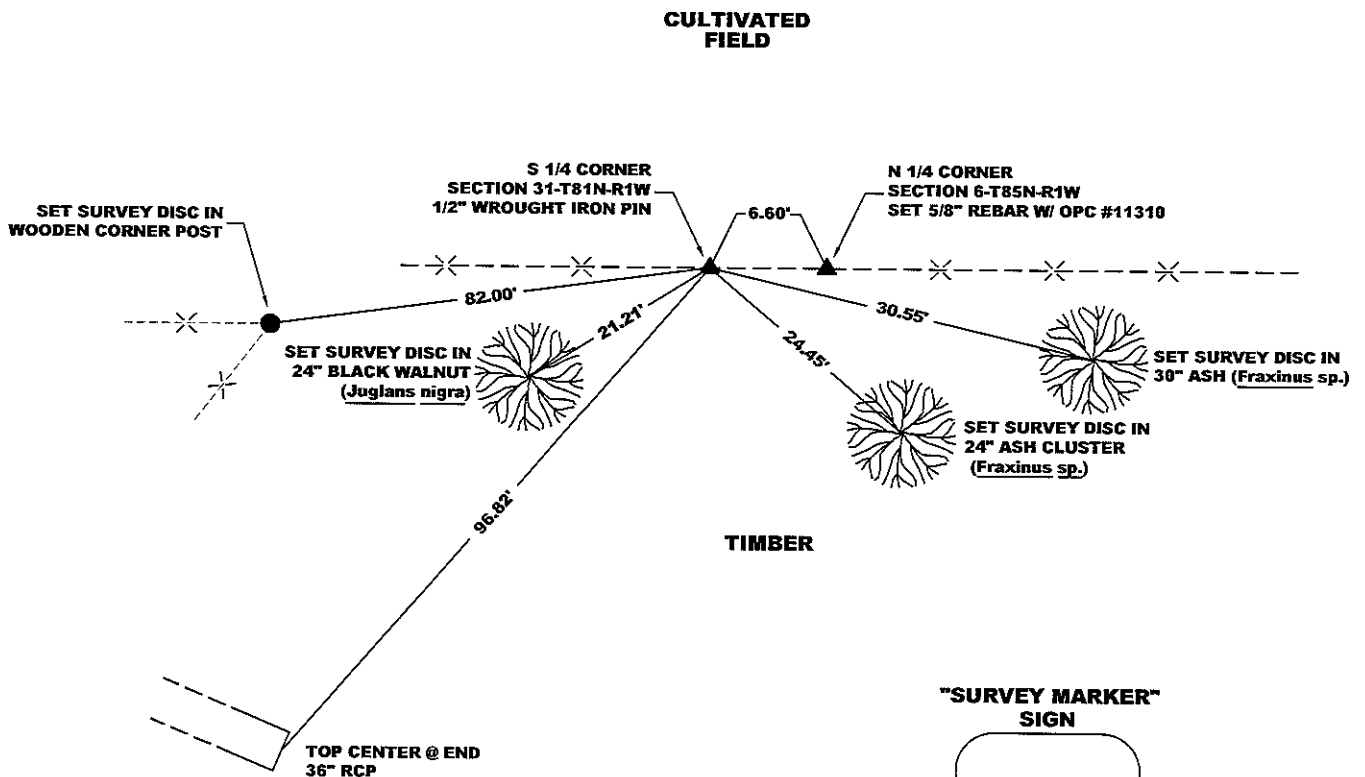
STATE PLANE COORDINATE  
 NAD 83 IOWA NORTH  
 N 3548954.96  
 E 5597064.97

CORNER SECTION TOWNSHIP RANGE  
 S 1/4 CORNER 31 T86N R1W



**NOTES:**

- 1) THE STATE PLANE COORDINATES AS SHOWN ARE FOR CONVENIENCE ONLY. THE TIES AS SHOWN SHOULD BE USED TO REPLACE THE CORNER, IF DESTROYED.
- 2) COORDINATES AS SHOWN ARE GRID COORDINATES AND BASED ON JONES COUNTY G.P.S. CONTROL NETWORK WHICH IN TURN IS BASED ON NAD 83 IOWA NORTH DATUM.
- 3) ALL MEASUREMENTS ARE IN FEET AND DECIMALS THEREOF.



**"SURVEY MARKER" SIGN**

PLEASE PROTECT NEARBY  
**SURVEY MARKER**  
 IF LOCATION OF THIS MARK IS ENDANGERED PLEASE CONTACT JONES COUNTY ENGINEER'S OFFICE 319-462-3785

**SURVEY DISC**



**LEGEND**

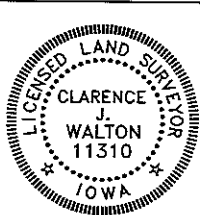
- OPC ORANGE PLASTIC CAP
- ( ) RECORDED AS
- PER ORIGINAL
- [ ] GOVERNMENT SURVEY FIELD NOTES

**PAGE 3 of 3**

PREVIOUSLY RECORDED IN RECORDER'S DOCUMENT 97 98 3640

MONUMENT DESCRIPTION AND HOW ESTABLISHED FOUND 1/2" WROUGHT IRON PIN 2" BELOW PRESENT GROUND SURFACE IN OLD DOWN FENCE LINE WITH BENT ANGLE IRON NEXT TO PIN. SET STEEL FENCE POST WITH "SURVEY MARKER" SIGN ON SOUTH SIDE OF PIN AS A WITNESS TO THIS CORNER.

FIELD BOOK 344, PAGE 75. DATE OF SURVEY: 11/3/09



I hereby certify that this land surveying document and the related survey work was performed by me or under my direct personal supervision and that I am a duly registered Land Surveyor under the laws of the State of Iowa.  
 Signed: *Clarence J. Walton* 4/26/10  
 Clarence J. Walton, L.S.  
 My Registration Renewal Date is December 31, 2011  
 Iowa License Number 11310  
 Pages or sheets covered by this seal: 1 of 1.

- A. THERE IS NO CERTIFICATE FOR THE CORNER ON FILE WITH THE RECORDER OF THE COUNTY IN WHICH THE CORNER IS LOCATED.
- B. THE CORNER MONUMENT HAS BEEN REPLACED OR MODIFIED.
- C. THE SURVEYOR IN RESPONSIBLE CHARGE OF THE LAND SURVEYING ACCEPTS A CORNER POSITION THAT DIFFERS FROM THAT SHOWN IN THE PUBLIC RECORDS OF THE COUNTY IN WHICH THE CORNER IS LOCATED.
- D. THE REFERENCE TIES REFERRED TO IN AN EXISTING PUBLIC RECORD NO LONGER EXIST.
- E. EXISTING CORNER TIES UPDATED.

**CORNERS TO BE INDEXED**

CORNER	SECTION	TOWNSHIP	RANGE
S 1/4 CORNER	31	86N	1W

**JONES COUNTY ENGINEER'S OFFICE**



19501 HWY. 64, ANAMOSA, IOWA 52205  
 (319) 462-3785

# THIS IS NOT A CERTIFICATION

SCOTCH GROVE

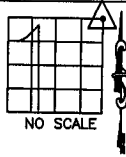
JONES COUNTY ENGINEER'S OFFICE, 19501 HWY. 64, ANAMOSA, IOWA, 52205 (319)462-3785

## UNITED STATES PUBLIC LAND SURVEY CORNER CERTIFICATE

LAND SURVEY MONUMENTS SITUATED IN SECTION 1, TOWNSHIP 85  
NORTH, RANGE 2 WEST OF THE 5TH P.M., JONES COUNTY, IOWA

### CORNERS TO BE INDEXED

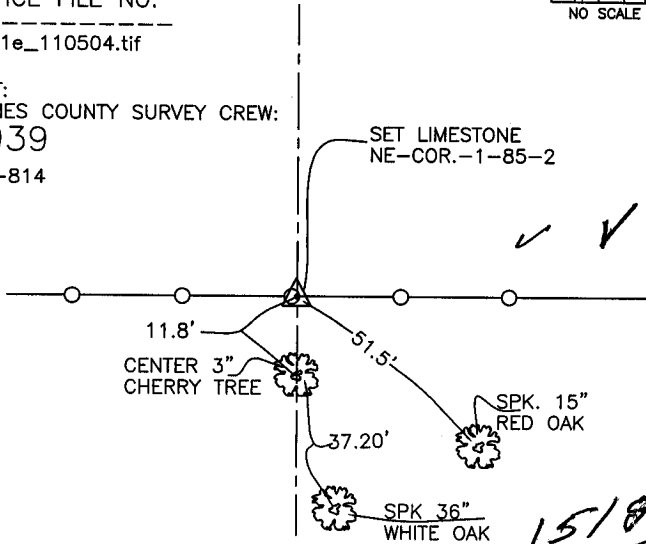
CORNER SECTION TOWNSHIP RANGE  
NORTHEAST 1 85N 2W



OFFICE FILE NO.

85201e\_110504.tif

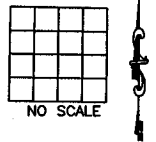
REF:  
JONES COUNTY SURVEY CREW:  
1939  
FA-814



PREVIOUSLY RECORDED IN BOOK \_\_\_\_\_, PAGE \_\_\_\_\_  
MONUMENT DESCRIPTION AND HOW ESTABLISHED SET  
8"X12"X29" LIMESTONE OVER 1/2"X36" TWISTED IRON PIN. NORTHEAST  
CORNER SECTION 1, TOWNSHIP 85 NORTH, RANGE 2WEST OF THE 5TH  
PRINCIPAL MERIDIAN, JONES COUNTY, IOWA.

### CORNERS TO BE INDEXED

CORNER SECTION TOWNSHIP RANGE

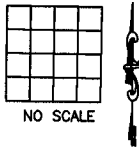


OFFICE FILE NO.

PREVIOUSLY RECORDED IN BOOK \_\_\_\_\_, PAGE \_\_\_\_\_  
MONUMENT DESCRIPTION AND HOW ESTABLISHED \_\_\_\_\_

### CORNERS TO BE INDEXED

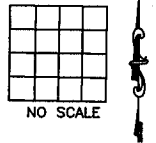
CORNER SECTION TOWNSHIP RANGE



OFFICE FILE NO.

### CORNERS TO BE INDEXED

CORNER SECTION TOWNSHIP RANGE



OFFICE FILE NO.