

2001 4591

FILED
RECORDERS OFFICE
JONES COUNTY IOWA

01 DEC 31 AM 10:25

MARIE KRUTZFIELD
RECORDER 6.00 pd

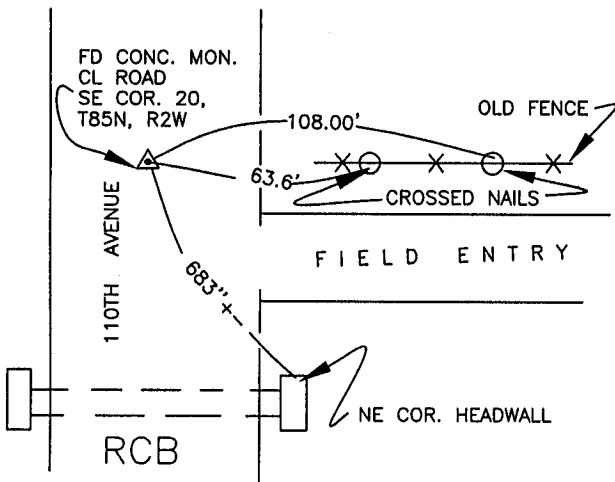
J.D. TJEPKES, 23428 RIDGE RD. ANAMOSA, IOWA, 52205 (319)462-6067

UNITED STATES PUBLIC LAND SURVEY CORNER CERTIFICATE

LAND SURVEY MONUMENTS SITUATED IN SECTION 20, TOWNSHIP 85
NORTH, RANGE 2 WEST OF THE 5TH P.M., JONES COUNTY, IOWA

CORNERS TO BE INDEXED

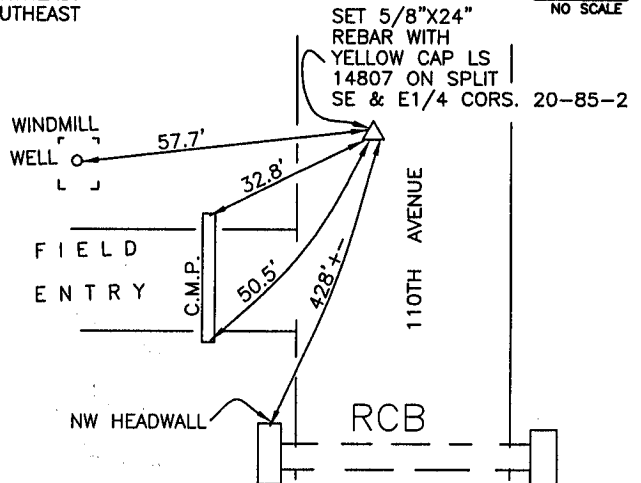
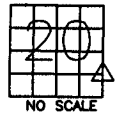
CORNER SECTION TOWNSHIP RANGE
SOUTHEAST 20 85N 2 WEST



PREVIOUSLY RECORDED IN BOOK N/A, PAGE N/A
MONUMENT DESCRIPTION AND HOW ESTABLISHED FOUND
CONCRETE MONUMENT WITH REBAR 1' BELOW ROAD SURFACE
IN CENTER OF ROAD OPPOSITE OLD FENCE. SET REFERENCE
POINTS AND TIED OUT AS INDICATED. SOUTHEAST CORNER OF
SECTION 20, TOWNSHIP 85 NORTH, RANGE 2 WEST, JONES COUNTY
IOWA.

CORNERS TO BE INDEXED

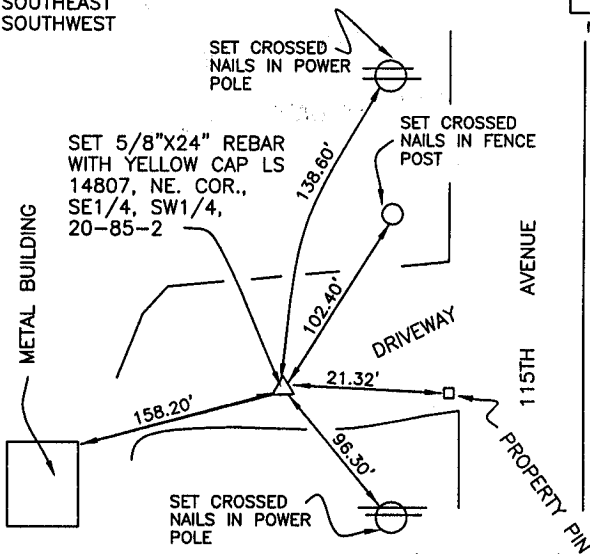
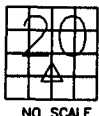
CORNER SECTION TOWNSHIP RANGE
SOUTHEAST 20 85N 2 WEST
NORTHEAST
SOUTHEAST



PREVIOUSLY RECORDED IN BOOK N/A, PAGE N/A
MONUMENT DESCRIPTION AND HOW ESTABLISHED SET 5/8"X24"
REBAR WITH YELLOW CAP 6" BELOW ROAD SURFACE ON SPLIT
BETWEEN SOUTHEAST CORNER AND EAST QUARTER CORNER,
SECTION 20, TOWNSHIP 85 NORTH, RANGE 2 WEST, 5TH P.M.,
JONES COUNTY, IOWA. SET REFERENCE POINTS AND TIED OUT
AS INDICATED.

CORNERS TO BE INDEXED

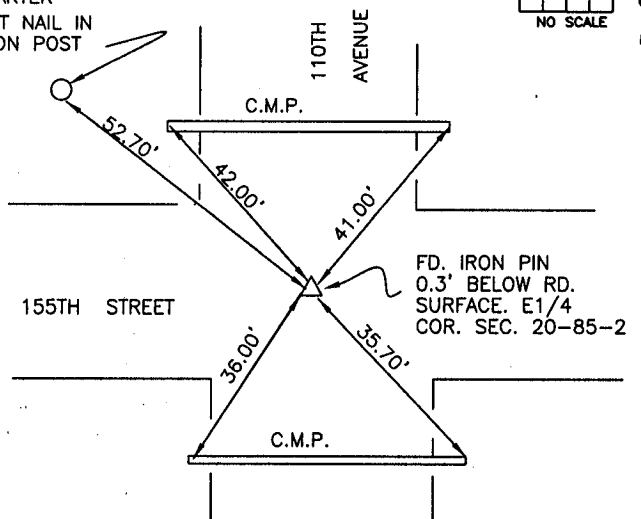
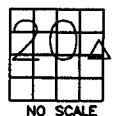
CORNER SECTION TOWNSHIP RANGE
NORTHEAST 20 85N 2W
SOUTHEAST
SOUTHWEST



PREVIOUSLY RECORDED IN BOOK N/A, PAGE N/A
MONUMENT DESCRIPTION AND HOW ESTABLISHED SET 5/8"X24"
REBAR WITH YELLOW CAP LS 14807 PER SECTION BREAKDOWN.
SET REFERENCE POINTS AND TIED OUT AS INDICATED. NORTHEAST
CORNER, SOUTHEAST QUARTER, SOUTHWEST QUARTER, SECTION 20,
TOWNSHIP 85 NORTH, RANGE 2 WEST, 5TH P.M., JONES COUNTY, IA.

CORNERS TO BE INDEXED

CORNER SECTION TOWNSHIP RANGE
EAST QUARTER 20 85N 2W



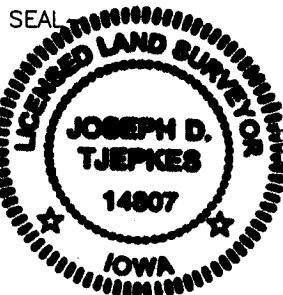
PREVIOUSLY RECORDED IN BOOK N/A, PAGE N/A
MONUMENT DESCRIPTION AND HOW ESTABLISHED FOUND IRON
PIN 0.3' BELOW ROAD SURFACE PER HAROLD DILLON TIES FILED WITH
JONES COUNTY ENGINEER'S OFFICE. SET NEW REFERENCE POINTS
TIED OUT AS INDICATED. EAST QUARTER CORNER, SECTION 20,
TOWNSHIP 85 NORTH, RANGE 2 WEST, 5TH P.M., JONES COUNTY, IA.

I hereby declare that this plat, survey or report was made by me or under my direct personal supervision and that I am a duly registered Land Surveyor under the laws of the State of Iowa.

Signed:

J. D. Tjepkes 12-29-01

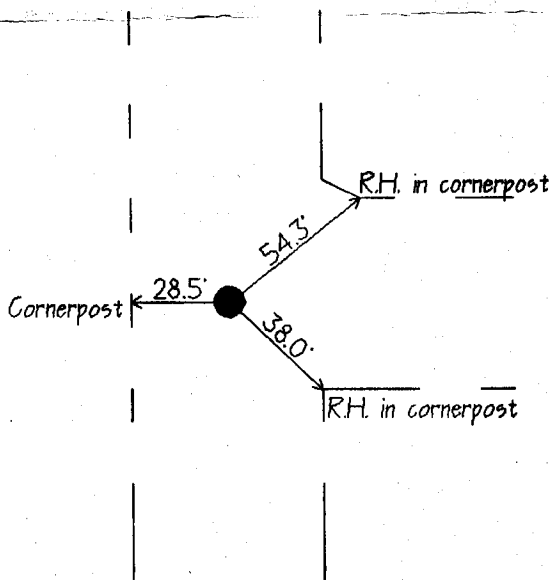
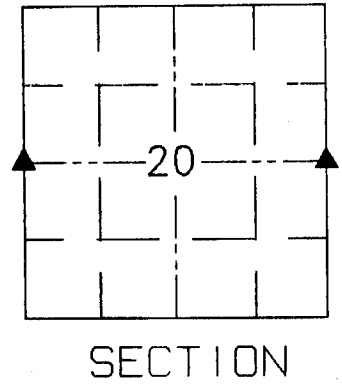
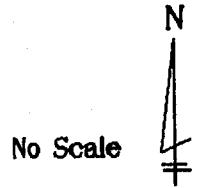
Joseph D. Tjepkes L.S. Iowa Reg. No. 14807
My Registration Renewal Date is December 31, 2002



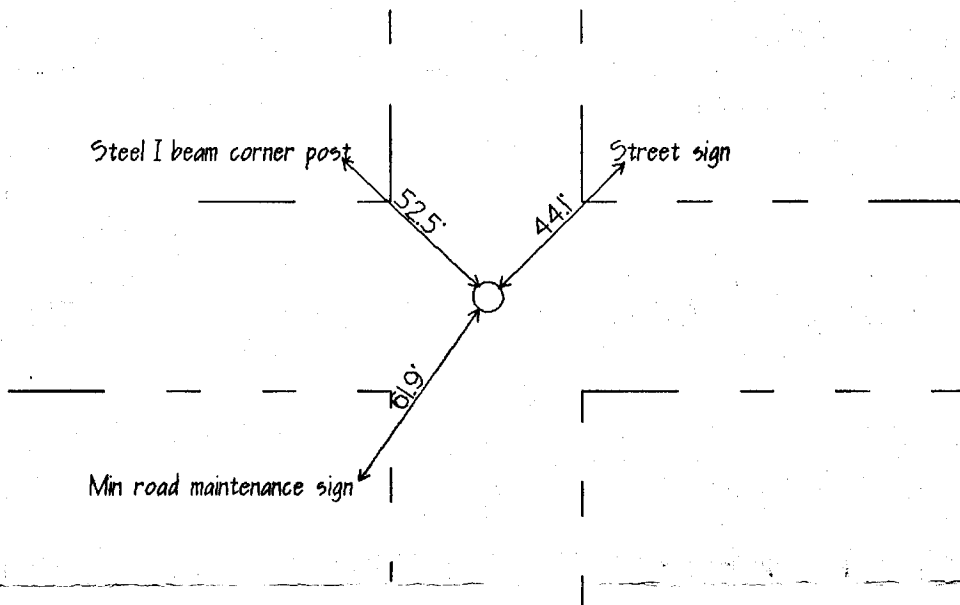
J.D. TJEPKES LS 14807
23428 RIDGE ROAD
ANAMOSA, IOWA 52205

United States Public Land Survey Corner Certificate

Land survey corner in Section 20 Township 85 North
Range 2 West of the 5th Principal Meridian
Jones County, Iowa.



W 1/4 Corner
Section 20-85-2
End 1/2" iron rod



E 1/4 Corner
Section 20-85-2
Set 1. Pin

4-12-94
M.S.

Certification

I hereby certify that this plot and survey was made by me or under my direct supervision and that I am a duly Registered Land Surveyor under the laws of the State of Iowa.

Harold E. Dillon

2/7/94

Harold E. Dillon Reg.#6581

date

