

FILED
RECORDERS OFFICE
JONES COUNTY IOWA

05 SEP 12 AM 9:43

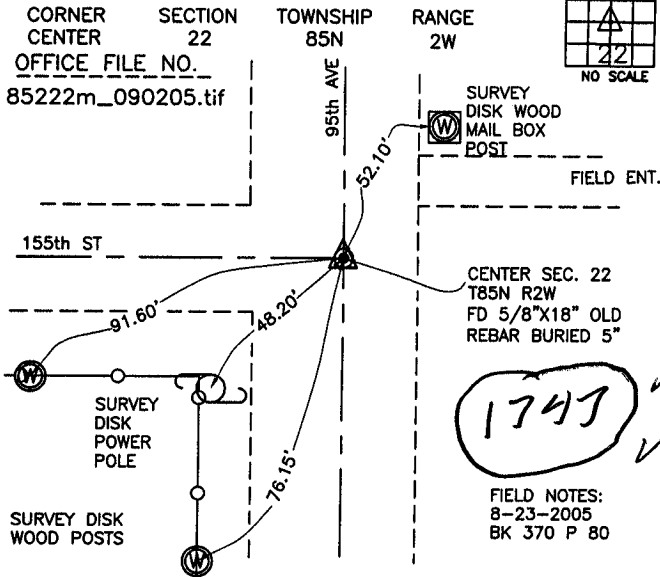
MARIE KRUTZFIELD
RECORDER No Fee

J.D. TJEPKES, LS. JONES COUNTY ENGINEER'S OFFICE, 19501 HWY. 64, ANAMOSA, IOWA, 52205 (319)462-3785

UNITED STATES PUBLIC LAND SURVEY CORNER CERTIFICATE

LAND SURVEY MONUMENTS SITUATED IN SECTION 22, TOWNSHIP 85
NORTH, RANGE 2 WEST OF THE 5TH P.M., JONES COUNTY, IOWA

CORNERS TO BE INDEXED

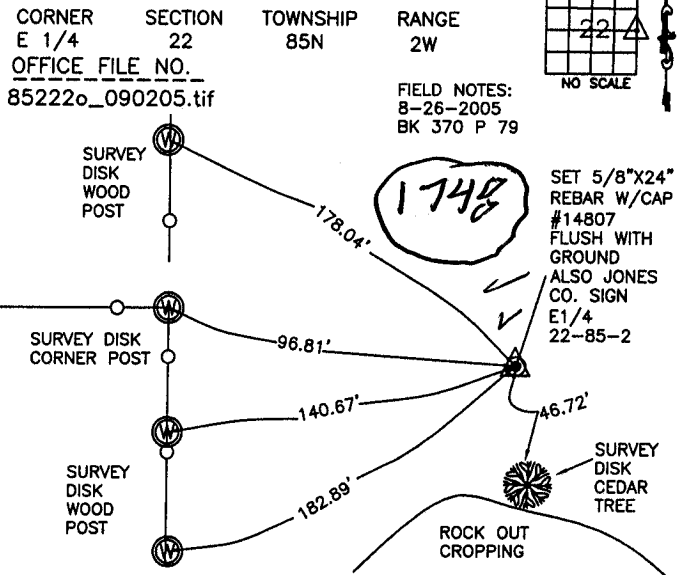


1743

FIELD NOTES:
8-23-2005
BK 370 P 80

PREVIOUSLY RECORDED IN BOOK NA, PAGE NA
MONUMENT DESCRIPTION AND HOW ESTABLISHED
PER PHYSICAL EVIDENCE AND COUNTY ROAD RECORDS, FOUND 5/8"X18" OLD SQUARE REBAR BURIED 5" IN ROADBED. DUG 12'X7'X2.5' HOLE WITH COUNTY BACKHOE LOOKING FOR A STONE. FOUND NOTHING. RESET REBAR AND TIED AS INDICATED. CENTER SECTION 22 T85N R2W.

CORNERS TO BE INDEXED



1748

FIELD NOTES:
8-26-2005
BK 370 P 79

SET 5/8"X24" REBAR W/CAP #14807 FLUSH WITH GROUND ALSO JONES CO. SIGN E1/4 22-85-2

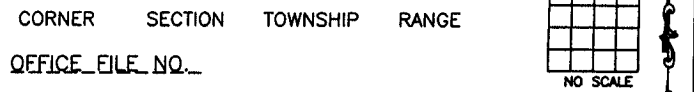
PREVIOUSLY RECORDED IN BOOK NA, PAGE NA
MONUMENT DESCRIPTION AND HOW ESTABLISHED
PER PROPORTIONATE DISTANCE AND ON LINE BETWEEN FD 5/8" REBAR AT SOUTHEAST CORNER AND FD IRON PIN AT NORTHEAST CORNER SECTION 22, SET 5/8"X24" REBAR W/CAP #14807, FLUSH WITH GROUND. ALSO SET JONES CO. SIGN AND FENCE POST ALONG SIDE OF REBAR. TIES AS INDICATED FOR THE EAST QT. SEC. 22 T85N R2W.

CORNERS TO BE INDEXED



NO SCALE

CORNERS TO BE INDEXED



NO SCALE