

COPY

FEE BOOK: 2009 2911 8/21/2009 9:44 AM
 REC FEES: NO FEE
 PAGES: 1 Marie Krutzfield, Recorder
 Jones County, Iowa

PREPARED BY
 CLARENCE J. WALTON, JONES COUNTY ENGINEER'S OFFICE, 19501 HWY. 64, ANAMOSA, IOWA, 52205 (319) 462-3785

UNITED STATES PUBLIC LAND SURVEY CORNER CERTIFICATE

**LAND SURVEY MONUMENTS SITUATED IN SECTION 22, TOWNSHIP 85 NORTH,
 RANGE 2 WEST OF THE 5TH PRINCIPAL MERIDIAN, JONES COUNTY, IOWA.**

OFFICE FILE NO.

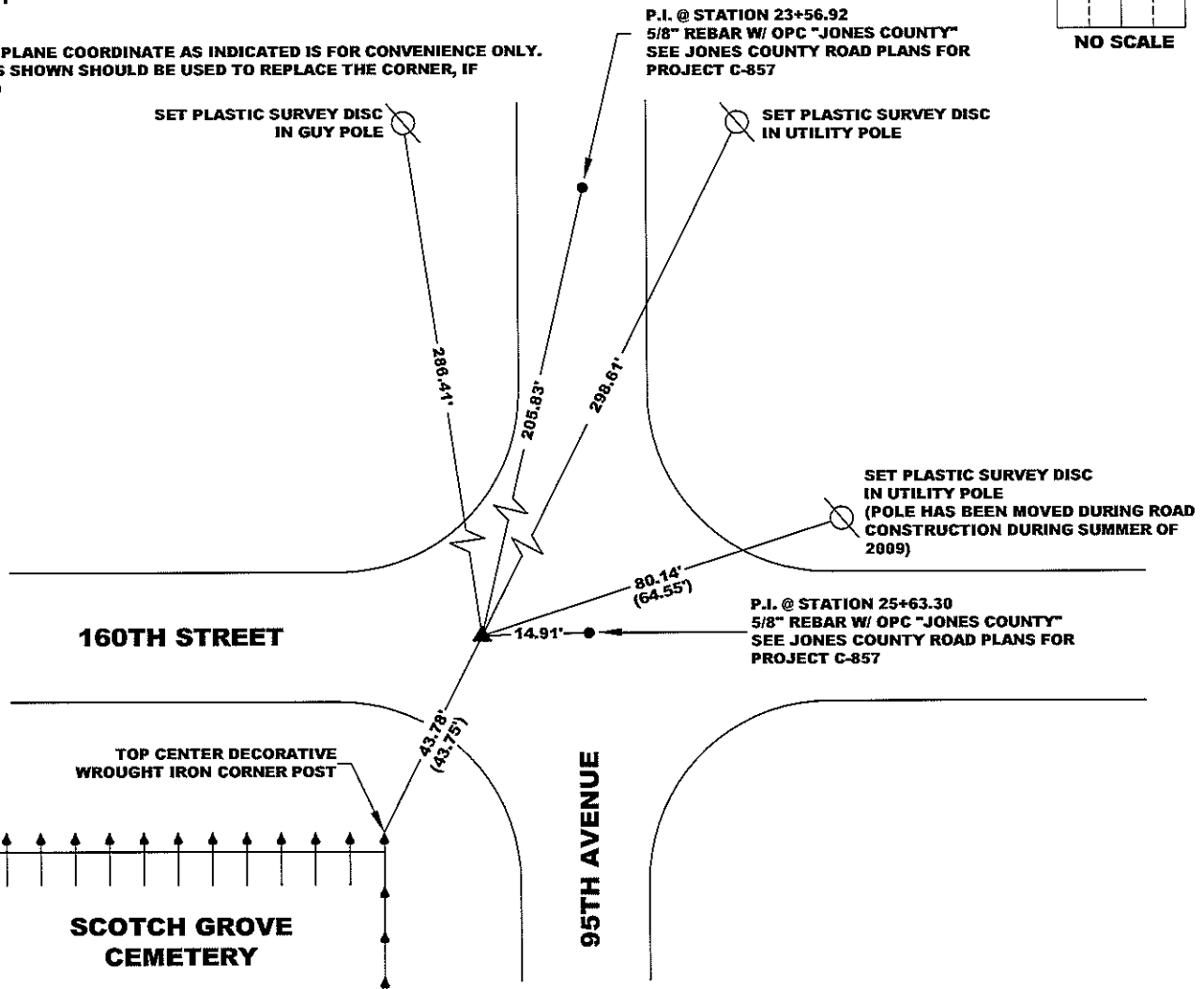
STATE PLANE COORDINATE
 NAD 83 IOWA NORTH
 N 3533089.18
 E 5581665.71

CORNER SECTION TOWNSHIP RANGE
 N 1/4 CORNER 22 T85N R2W



NO SCALE

NOTE:
 THE STATE PLANE COORDINATE AS INDICATED IS FOR CONVENIENCE ONLY.
 THE TIES AS SHOWN SHOULD BE USED TO REPLACE THE CORNER, IF
 DESTROYED

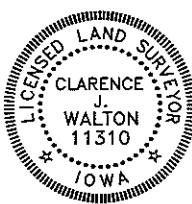


OPC ORANGE PLASTIC CAP
 () RECORDED AS

PREVIOUSLY RECORDED IN RECORDER'S DOCUMENT 2004 0061

MONUMENT DESCRIPTION AND HOW ESTABLISHED SET 5/8" REBAR W/ORANGE PLASTIC CAP #11310 AT PRESENT ROAD SURFACE USING DATA FROM JONES COUNTY ROAD PROJECT C-857 AND PER CORNER CERTIFICATE RECORDED IN RECORDER'S DOCUMENT #2004 0061. PREVIOUS MONUMENT WAS DESTROYED DUE TO ROAD CONSTRUCTION IN SUMMER OF 2009.

FIELD BOOK 371, PAGE 80. DATE OF SURVEY: 8/18/09



I hereby certify that this land surveying document and the related survey work was performed by me or under my direct personal supervision and that I am a duly registered Land Surveyor under the laws of the State of Iowa.
 Signed: *Clarence J. Walton* 8/21/09
 Clarence J. Walton, L.S.
 My Registration Renewal Date is December 31, 2009
 Iowa License Number 11310
 Pages or sheets covered by this seal: 1 of 1.

- A. THERE IS NO CERTIFICATE FOR THE CORNER ON FILE WITH THE RECORDER OF THE COUNTY IN WHICH THE CORNER IS LOCATED.
- B. THE CORNER MONUMENT HAS BEEN REPLACED OR MODIFIED.
- C. THE SURVEYOR IN RESPONSIBLE CHARGE OF THE LAND SURVEYING ACCEPTS A CORNER POSITION THAT DIFFERS FROM THAT SHOWN IN THE PUBLIC RECORDS OF THE COUNTY IN WHICH THE CORNER IS LOCATED.
- D. THE REFERENCE TIES REFERRED TO IN AN EXISTING PUBLIC RECORD NO LONGER EXIST.

CORNERS TO BE INDEXED

CORNER	SECTION	TOWNSHIP	RANGE
N 1/4	22	85N	2W
S 1/4	15	85N	2W

JONES COUNTY ENGINEER'S OFFICE



19501 HWY. 64, ANAMOSA, IOWA 52205
 (319) 462-3785

2004 0061

FILED
RECORDERS OFFICE
JONES COUNTY IOWA

04 JAN -6 PM 2:14

MARIE KRUTZFIELD
RECORDER *No Fee*

J.D. Tjepkes, L.S. JONES COUNTY ENGINEER'S OFFICE, 19501 HWY. 64, ANAMOSA, IOWA, 52205 (319)462-3785

UNITED STATES PUBLIC LAND SURVEY CORNER CERTIFICATE

LAND SURVEY MONUMENTS SITUATED IN SECTION 22, TOWNSHIP 85
NORTH, RANGE 2 WEST OF THE 5TH P.M., JONES COUNTY, IOWA

CORNERS TO BE INDEXED

CORNER	SECTION	TOWNSHIP	RANGE
NE	22	85N	2W

OFFICE FILE NO. 85222e_121503.jpg

NO SCALE
FD R.H. NAIL SET SURVEY DISK IN POWER POLE

90th AVE.

679

FD 5/8" IRON PIN BURIED 6" NE-22-85-2

160th ST.

FD R.H. NAIL SET SURVEY DISK IN END POST

FIELD NOTES: 11-21-2003 BK MISC-2002-2003 P72

PREVIOUSLY RECORDED IN BOOK 319, PAGE 63
MONUMENT DESCRIPTION AND HOW ESTABLISHED
PER SEC. COR. TIES IN RECORDER'S BK 319 P 63, FOUND 5/8" IRON PIN SET BY LS#7036 (MICKELSON) IN CENTERLINE-CENTERLINE ROADS. RETIED AS INDICATED. SE COR. SEC. 15 T85N R2W.

CORNERS TO BE INDEXED

CORNER	SECTION	TOWNSHIP	RANGE
N1/4	22	85N	2W

OFFICE FILE NO. 85222c_121503.jpg

NO SCALE
FD R.H. NAIL SET SURVEY DISK IN POWER POLE

95th AVE.

678

FD 5/8" IRON PIN BURIED 6" N 1/4-22-85-2

160th ST.

FD R.H. NAIL SET SURVEY DISK IN POWER POLE

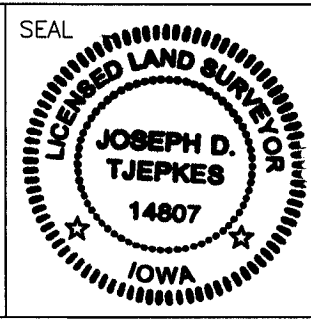
FIELD NOTES: 11-21-2003 BK MISC-2002-2003 P72

PREVIOUSLY RECORDED IN BOOK 319, PAGE 63
MONUMENT DESCRIPTION AND HOW ESTABLISHED
PER SEC. COR. TIES IN RECORDER'S BK 319 P 63, FOUND 5/8" IRON PIN SET BY LS#7036 (MICKELSON) IN CENTERLINE-CENTERLINE ROADS. RETIED AS INDICATED. S 1/4 COR. SEC. 15 T85N R2W.

I hereby declare that this plat, survey or report was made by me or under my direct personal supervision and that I am a duly registered Land Surveyor under the laws of the State of Iowa.

Signed: *J. D. Tjepkes* 1.06.04

Joseph D. Tjepkes L.S. Iowa Reg. No. 14807
My Registration Renewal Date is December 31, 2004



J.D. Tjepkes LS 14807
JONES COUNTY
ENGINEER'S OFFICE

19501 HWY. 64,
ANAMOSA, IOWA,
52205 (319)462-3785

P

SECTION CORNER CERTIFICATE

OF
 LAND SURVEY MONUMENTS SITUATED IN SECTION 15, TOWNSHIP 85 NORTH,
 RANGE 2 WEST, OF THE FIFTH PRINCIPAL MERIDIAN, JONES, COUNTY, IOWA.

PREVIOUSLY RECORDED IN BOOK _____ AT PAGE _____ .

FOR RECORDER'S USE

REASON FOR PREPARING CERTIFICATE:

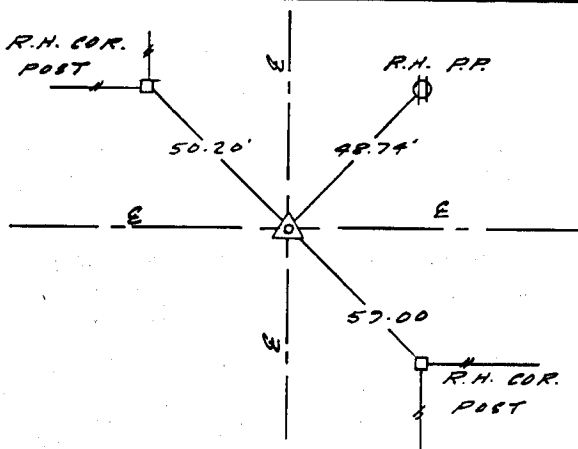
- A) THERE IS NO CERTIFICATE FOR THE CORNER ON FILE WITH THE RECORDER OF THE COUNTY IN WHICH THE CORNER IS LOCATED.
- B) CORNER POSITION DIFFERS FROM THAT SHOWN IN THE PUBLIC RECORDS OF THE COUNTY IN WHICH THE CORNER IS LOCATED.
- C) THE CORNER MONUMENT HAS BEEN REPLACED OR MODIFIED.
- D) THE REFERENCE TIES REFERRED TO IN AN EXISTING PUBLIC RECORD ARE INCORRECT.

MONUMENT DESCRIPTION AND REMARKS:

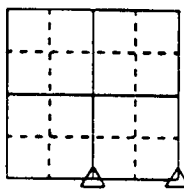
DUG-PROBED FOR CORNERS FOUND NO EVIDENCE SET 5/8" PINS ON E E

RECOVERY TIE DRAWING

S 1/4 COR. SEC. 15-85-2

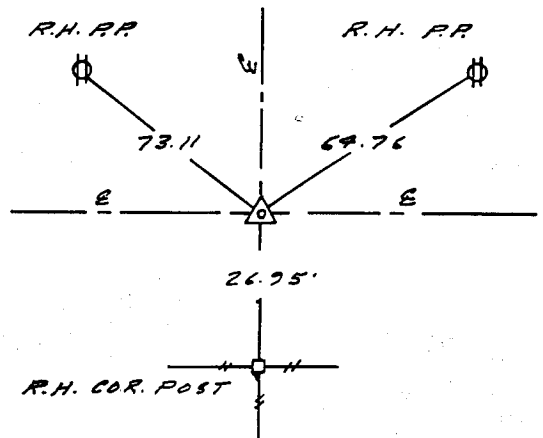


SET 5/8" IRON PIN



NOT TO SCALE

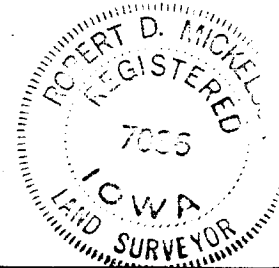
SE. COR. SEC. 15-85-2



SET 5/8" IRON PIN

I, ROBERT D. MICKELSON, CERTIFY THAT THE CORNER LOCATION(S) SHOWN ON THIS RECORD WERE DETERMINED BY ME OR UNDER MY DIRECTION AND CONTROL AND THAT THIS U.S. PUBLIC LAND SURVEY MONUMENT RECORD IS CORRECT AND COMPLETE TO THE BEST OF MY KNOWLEDGE AND BELIEF.

Robert D. Mickelson 4-24-92
 ROBERT D. MICKELSON LS. NO 7036 DATE



- GOVERNMENT CORNER
- 5/8" TIE PIN SET
- CENTERLINE
- EXISTING FENCE LINE
- R.O.W. LINE

SHEET TITLE: **U.S. PUBLIC LAND SURVEY RECORD**
 PROJECT TITLE: **SECTION CORNER TIES**

MMS CONSULTANTS, INC.
 Iowa City, Iowa
 319-351-8282

ZKD G.L.R. XIC RDM APP RDM DATE 2/10/92 SCALE NONE F NO 267 P NO 1940.002