

2004 2471

FILED
RECORDERS OFFICE
JONES COUNTY IOWA

04 JUL -2 PM 2: 08

MARIE KRUTZFIELD 7.00 pd
RECORDER

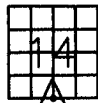
J.D. TJEPKES, LS. 14807, 23428 RIDGE ROAD, ANAMOSA, IOWA, 52205 (319-462-6067)

UNITED STATES PUBLIC LAND SURVEY CORNER CERTIFICATE

LAND SURVEY MONUMENTS SITUATED IN SECTION 14, TOWNSHIP 85
NORTH, RANGE 2 WEST OF THE 5TH P.M., JONES COUNTY, IOWA

CORNERS TO BE INDEXED

CORNER SECTION TOWNSHIP RANGE
S1/4 14 85N 2W

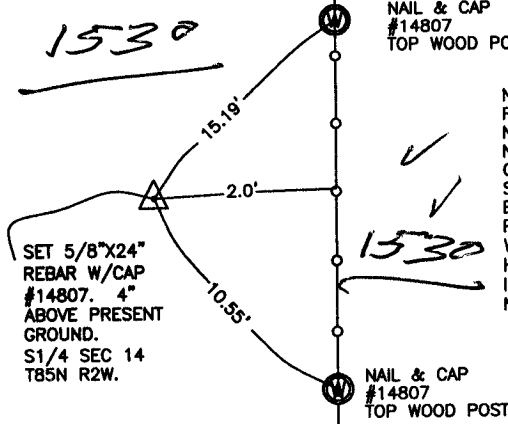


NO SCALE

OFFICE FILE NO.

B5223C-070204-112

1530



NAIL & CAP
#14807
TOP WOOD POST

1530
4-23

NOTE:
FENCE SHOWN
NEAR THE
NORTH-SOUTH
CENTERLINE OF
SEC. 14 WAS
ESTABLISHED AFTER
PROJ. LC-2238
WAS COMPLETED.
HAROLD EBY
INDICATED FENCE
NOT ON THE LINE.

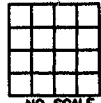
6-4-2004
MISC BK 2004

PREVIOUSLY RECORDED IN BOOK NA, PAGE NA
MONUMENT DESCRIPTION AND HOW ESTABLISHED _____

THE S1/4 CORNER SEC 14 ESTABLISHED FROM DOCUMENT 1310, RECORDED IN BK 120 P 367 IN JONES CO. RECORDER'S OFFICE, AND STATION OFFSET TIES PER THE PRESENT EXISTING CENTERLINE OF COUNTY ROAD E-17 PROJ NO LC-2238 (ENGINEER'S OFFICE). TIES AS INDICATED FOR S1/4 COR SECTION 14 T85N R2W.

CORNERS TO BE INDEXED

CORNER SECTION TOWNSHIP RANGE



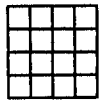
NO SCALE

OFFICE FILE NO.

PREVIOUSLY RECORDED IN BOOK _____, PAGE _____
MONUMENT DESCRIPTION AND HOW ESTABLISHED _____

CORNERS TO BE INDEXED

CORNER SECTION TOWNSHIP RANGE



NO SCALE

OFFICE FILE NO.

CORNERS TO BE INDEXED

CORNER SECTION TOWNSHIP RANGE



NO SCALE

OFFICE FILE NO.

PREVIOUSLY RECORDED IN BOOK _____, PAGE _____
MONUMENT DESCRIPTION AND HOW ESTABLISHED _____

PREVIOUSLY RECORDED IN BOOK _____, PAGE _____
MONUMENT DESCRIPTION AND HOW ESTABLISHED _____