

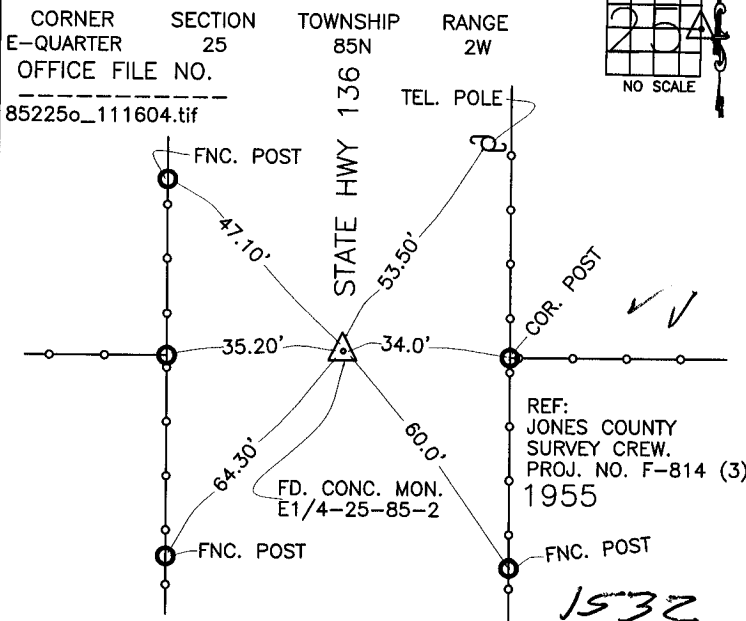
THIS IS NOT A CERTIFICATION

JONES COUNTY ENGINEER'S OFFICE, 19501 HWY. 64, ANAMOSA, IOWA, 52205 (319)462-3785

UNITED STATES PUBLIC LAND SURVEY CORNER CERTIFICATE

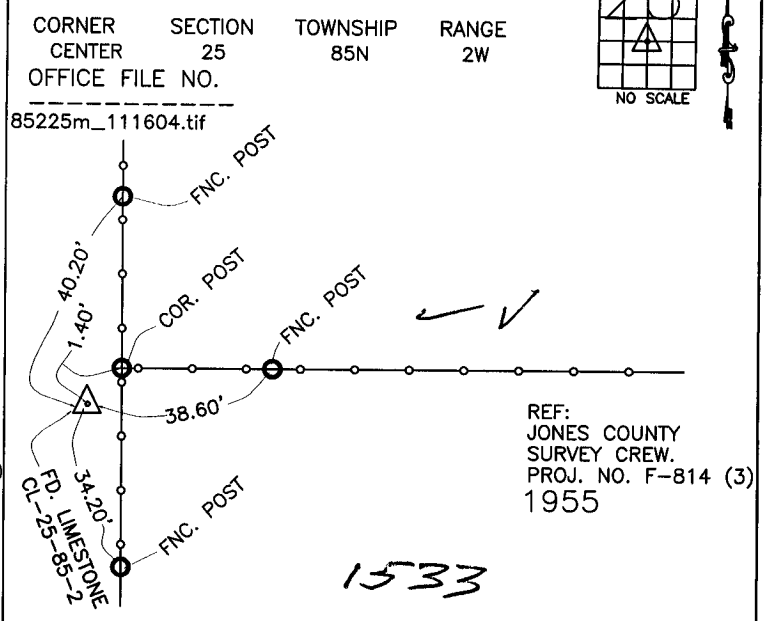
LAND SURVEY MONUMENTS SITUATED IN SECTION 25, TOWNSHIP 85
NORTH, RANGE 2 WEST OF THE 5TH P.M., JONES COUNTY, IOWA

CORNERS TO BE INDEXED



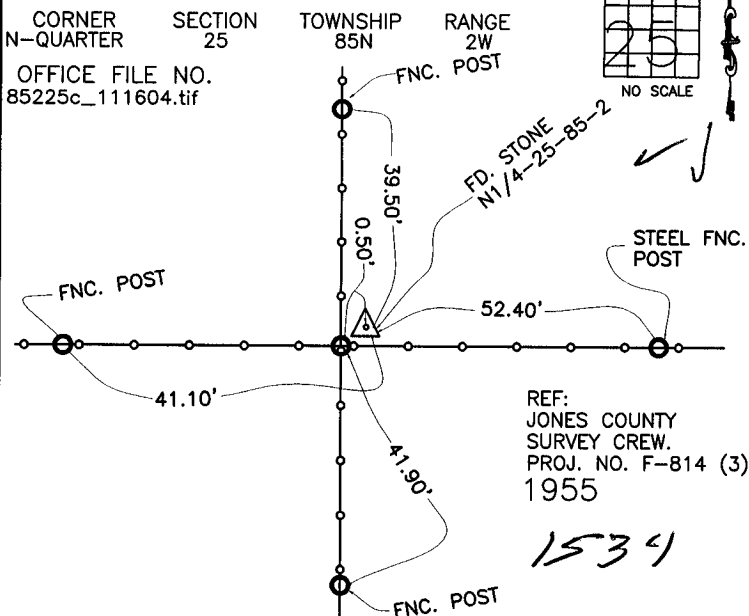
PREVIOUSLY RECORDED IN BOOK _____, PAGE _____
MONUMENT DESCRIPTION AND HOW ESTABLISHED FOUND
CONCRETE MONUMENT AT THE EAST QUARTER OF SECTION 25,
TOWNSHIP 85 NORTH, RANGE 2 WEST OF THE 5TH PRINCIPAL MERIDIAN,
JONES COUNTY, IOWA. SET TIES AS INDICATED.

CORNERS TO BE INDEXED



PREVIOUSLY RECORDED IN BOOK _____, PAGE _____
MONUMENT DESCRIPTION AND HOW ESTABLISHED FOUND
LIMESTONE AT THE CENTER OF SECTION 25, TOWNSHIP 85 NORTH,
RANGE 2 WEST OF THE 5TH PRINCIPAL MERIDIAN, JONES COUNTY,
IOWA. SET CORNER TIES AS INDICATED.

CORNERS TO BE INDEXED



CORNERS TO BE INDEXED

