

Instrument #: 2026-0968
 04/07/2026 10:20:54 AM Total Pages: 1
 2SC SECTION CORNER CERTIFICATE
 Recording Fee: \$7.00 Transfer Tax: \$0
 Sheri L. Jones, Recorder, Jones County Iowa



PREPARED BY: BRAD J. BURGER IOWA DEPARTMENT OF TRANSPORTATION 14117 ROUTE 52, DYERSVILLE, IOWA 52040 PHONE 563-875-2375

UNITED STATES PUBLIC LAND SURVEY CORNER CERTIFICATE

Land Survey Monuments situated in Section 30, Township 85N, Range 1W, of the Fifth Principal Meridian, Jones County, Iowa. Previously recorded in SEE NOTE in the Office of the County Recorder

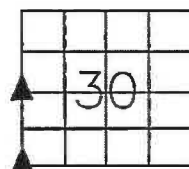
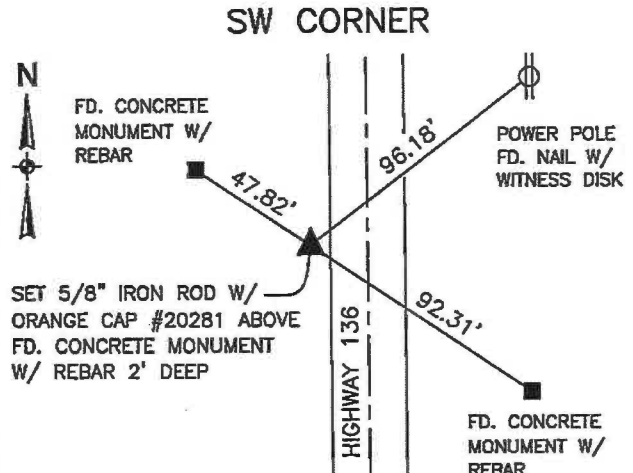
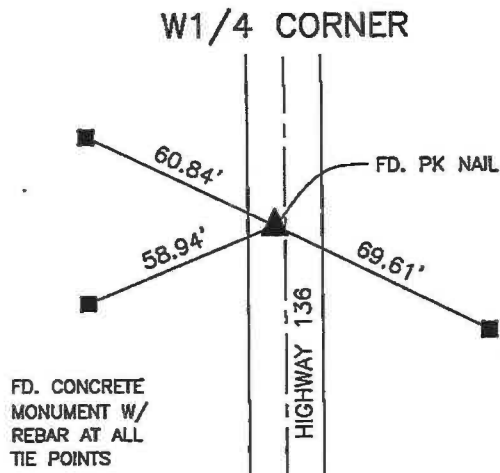
Monument Description and Remarks:

W1/4 CORNER - FD. PK NAIL

SW CORNER - SET 5/8" IRON ROD W/ ORANGE CAP #20281 ABOVE A FOUND CONCRETE MONUMENT W/ REBAR 2' DEEP

NOTE: THE SW CORNER WAS PREVIOUSLY RECORDED IN INSTRUMENT NUMBER 2004 3366 IN THE OFFICE OF THE JONES COUNTY RECORDER

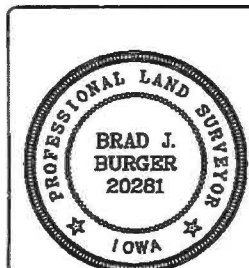
PLAN VIEW



SEC. 30 TWP. 85N RANGE 1W

CORNERS TO BE INDEXED

W1/4 CORNER	30	85N	1W
SW CORNER	30	85N	1W



I hereby certify that this land surveying document was prepared and related survey work was performed by me or under my direct personal supervision and that I am a duly licensed Land Surveyor under the laws of the State of Iowa.

Brad J. Burger 4/6/2026
 Brad J. Burger Date

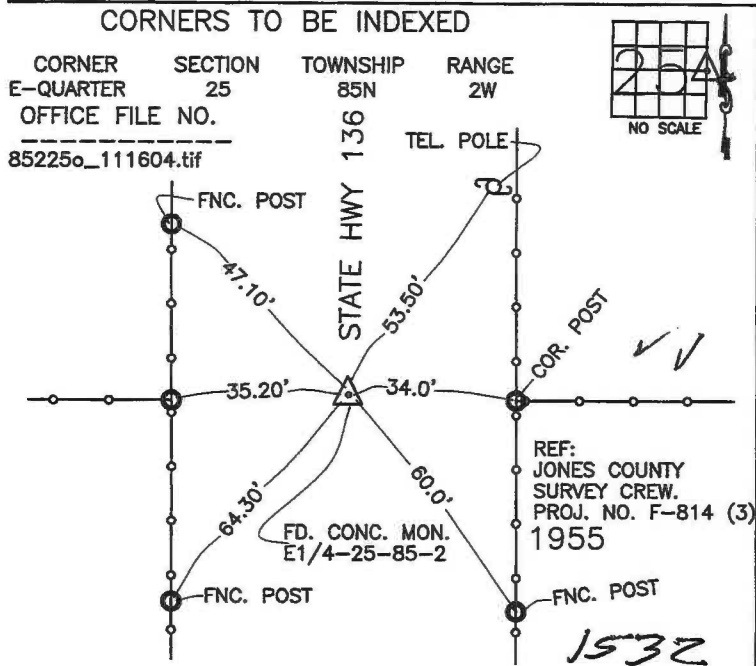
License number 20281
 My license renewal date is December 31, 2026
 Pages or Sheets covered by this seal: Sheet 1 of 1

THIS IS NOT A CERTIFICATION

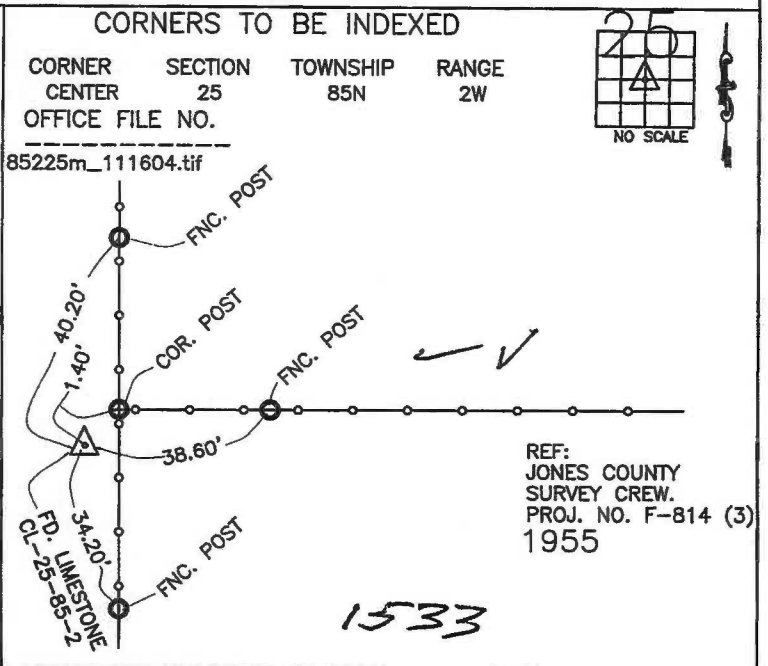
JONES COUNTY ENGINEER'S OFFICE, 19501 HWY. 64, ANAMOSA, IOWA, 52205 (319)462-3785

UNITED STATES PUBLIC LAND SURVEY CORNER CERTIFICATE

LAND SURVEY MONUMENTS SITUATED IN SECTION 25, TOWNSHIP 85
NORTH, RANGE 2 WEST OF THE 5TH P.M., JONES COUNTY, IOWA



PREVIOUSLY RECORDED IN BOOK _____, PAGE _____
MONUMENT DESCRIPTION AND HOW ESTABLISHED FOUND
CONCRETE MONUMENT AT THE EAST QUARTER OF SECTION 25,
TOWNSHIP 85 NORTH, RANGE 2 WEST OF THE 5TH PRINCIPAL MERIDIAN,
JONES COUNTY, IOWA. SET TIES AS INDICATED.



PREVIOUSLY RECORDED IN BOOK _____, PAGE _____
MONUMENT DESCRIPTION AND HOW ESTABLISHED FOUND
LIMESTONE AT THE CENTER OF SECTION 25, TOWNSHIP 85 NORTH,
RANGE 2 WEST OF THE 5TH PRINCIPAL MERIDIAN, JONES COUNTY,
IOWA. SET CORNER TIES AS INDICATED.

