

20020748  
 FILED  
 RECORDERS OFFICE  
 JONES COUNTY IOWA

02 FEB 27 AM 8:59

MARIE KRUTZFIELD  
 RECORDER *NO FEE*

J.D. TJEPKES, LS. JONES COUNTY ENGINEER'S OFFICE, 19501 HWY. 64, ANAMOSA, IOWA, 52205 (319)462-3785

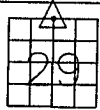
# UNITED STATES PUBLIC LAND SURVEY CORNER CERTIFICATE

LAND SURVEY MONUMENTS SITUATED IN SECTION 29, TOWNSHIP 85  
 NORTH, RANGE 2 WEST OF THE 5TH P.M., JONES COUNTY, IOWA

**CORNERS TO BE INDEXED**

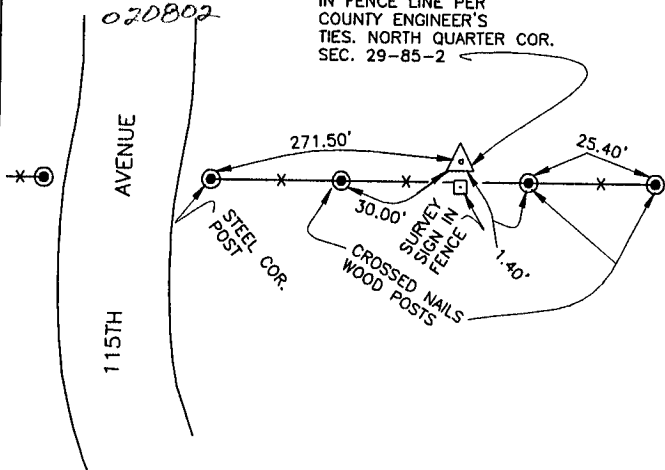
CORNER SECTION TOWNSHIP RANGE  
 N-1/4 29 85N 2W

OFFICE FILE NO.  
 85229c\_010301



NO SCALE

FOUND CONC. MONUMENT  
 IN FENCE LINE PER  
 COUNTY ENGINEER'S  
 TIES. NORTH QUARTER COR.  
 SEC. 29-85-2

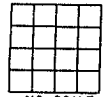


PREVIOUSLY RECORDED IN BOOK N/A, PAGE N/A  
 MONUMENT DESCRIPTION AND HOW ESTABLISHED FD. CONC. MON.  
 IN FENCE LINE PER JONES COUNTY ENGINEER'S TIES. SET MORE VISIBLE  
 REFERENCE POINTS AND TIED OUT AS INDICATED. NORTH QUARTER CORNER  
 SECTION 29, TOWNSHIP 85 NORTH, RANGE 2 WEST, 5TH PRINCIPAL MERIDIAN,  
 JONES COUNTY, IOWA.

**CORNERS TO BE INDEXED**

CORNER SECTION TOWNSHIP RANGE

OFFICE FILE NO.



NO SCALE

PREVIOUSLY RECORDED IN BOOK \_\_\_\_\_, PAGE \_\_\_\_\_  
 MONUMENT DESCRIPTION AND HOW ESTABLISHED \_\_\_\_\_

**CORNERS TO BE INDEXED**

CORNER SECTION TOWNSHIP RANGE

OFFICE FILE NO.



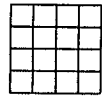
NO SCALE

PREVIOUSLY RECORDED IN BOOK \_\_\_\_\_, PAGE \_\_\_\_\_  
 MONUMENT DESCRIPTION AND HOW ESTABLISHED \_\_\_\_\_

**CORNERS TO BE INDEXED**

CORNER SECTION TOWNSHIP RANGE

OFFICE FILE NO.



NO SCALE

PREVIOUSLY RECORDED IN BOOK \_\_\_\_\_, PAGE \_\_\_\_\_  
 MONUMENT DESCRIPTION AND HOW ESTABLISHED \_\_\_\_\_

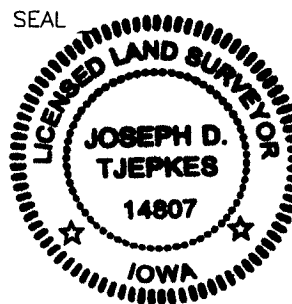
I hereby declare that this plat, survey or report was made by me or under my direct personal supervision and that I am a duly registered Land Surveyor under the laws of the State of Iowa.

Signed:

*Joseph D. Tjepkes* 2.09.02

Joseph D. Tjepkes L.S. Iowa Reg. No. 14807  
 My Registration Renewal Date is December 31, 2002

SEAL



J.D. TJEPKES LS 14807  
 JONES COUNTY  
 ENGINEER'S OFFICE

19501 HWY. 64,  
 ANAMOSA, IOWA,  
 52205 (319)462-3785