

Jones County Marie Krutzfield Recorder  
 Fee Book 2013 1728  
 06/28/2013 @ 01:24PM # Pages 1  
 ZSC SEC COR CERT  
 Total Fees: \$7.00

Prepared by: SCHNEIDER Land Surveying and Planning, Inc. P.O. Box 128 Farley, Iowa 52046 563-744-3631

**UNITED STATES PUBLIC LAND SURVEY CORNER CERTIFICATE OF**

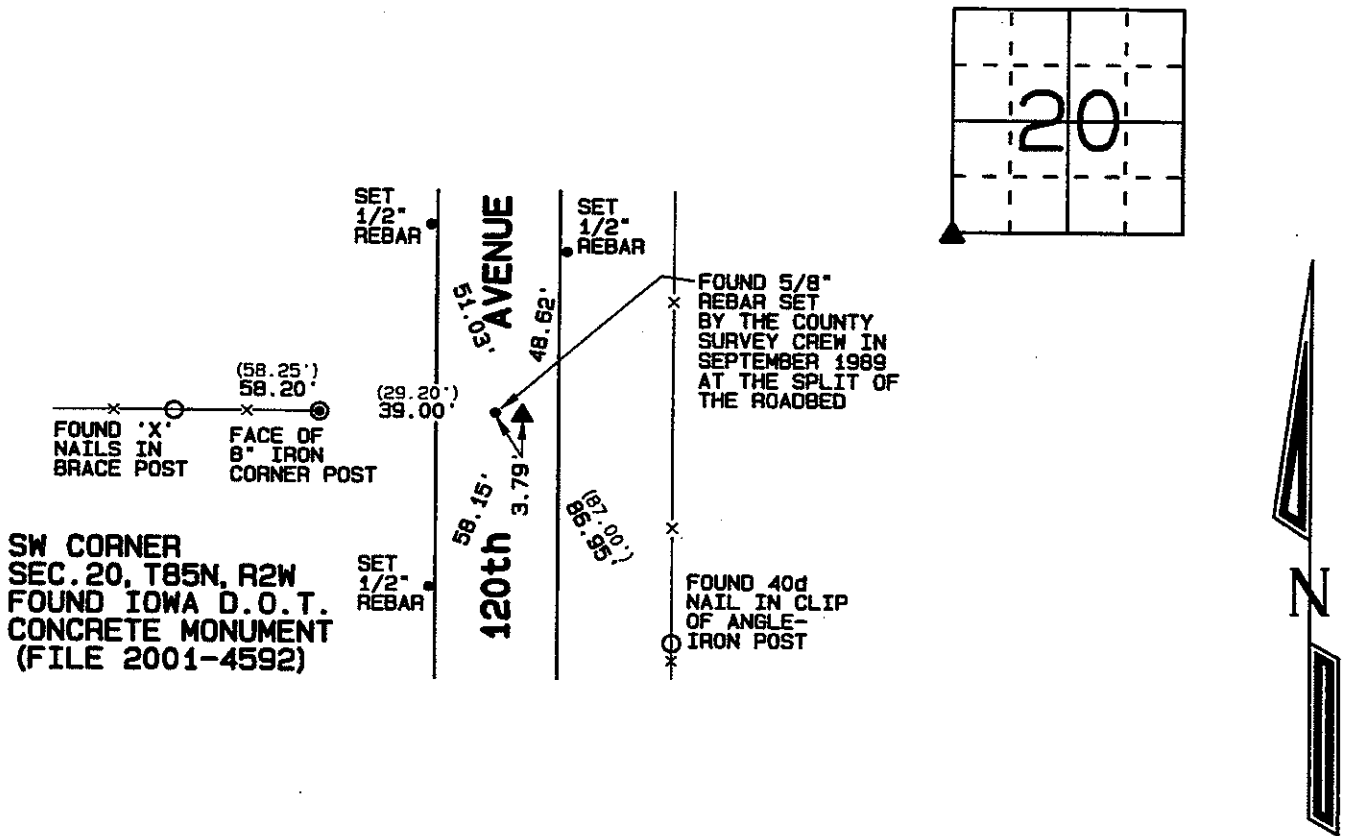
Land Survey Monuments situated in Section 20, Township 85 North, Range 2 West of the Fifth Principal Meridian, Jones County, Iowa.  
 Previously recorded FILE NO. 2001-4592

(BOOK, PAGE / INSET, NO. / CABINET, SLIDE)

**Monument Description and Remarks:**

A CONCRETE MONUMENT WITH AN EMBEDDED 1/2" ROD WAS FOUND AT THE SW CORNER OF SECTION 20, T85N, R2W AS ILLUSTRATED ON SECTION CORNER TIES OBTAINED FROM THE COUNTY ENGINEER'S OFFICE AND A SECTION CORNER CERTIFICATE RECORDED AS FILE 2001-4592. THE CONCRETE MONUMENT WAS PLACED IN 1956 BY JOHN D. FRANKLIN OF THE IOWA STATE HIGHWAY COMMISSION FOR THE PURPOSE OF R.O.W. DESCRIPTIONS FOR THE RELOCATION OF IOWA HIGHWAY NO. 38. THE MONUMENT WAS PLACED AT THE DIVISION OF THE R.O.W. FENCES, BUT SHOULD HAVE BEEN PLACED A HALF A ROD WEST OF THE MIDDLE OF THE R.O.W. FENCES TO ACCOUNT FOR THE ADDITIONAL R.O.W. ACQUIRED BY JONES COUNTY ON OCTOBER 6, 1931 AND FILED FOR RECORD OCTOBER 31, 1931 IN DEED BOOK 94, PAGE 494. THE CORNER WAS ACCEPTED AS FOUND AND RETIED TO CORRECT EXISTING TIES AND ILLUSTRATE ADDITIONAL TIES.

**PLAN - VIEW**



I hereby certify that this land surveying document was prepared and the related survey work was performed by me or under my direct personal supervision and that I am a duly licensed land surveyor under the laws of the State of Iowa.

*David P. Schneider* 6/26/2013  
 David P. Schneider P.L.S. #14417 Date:  
 My license renewal date is December 31, 2013.

Pages or sheets covered by this seal: THIS SHEET ONLY

**SCHNEIDER**  
 Land Surveying & Planning, Inc.

P.O. Box 128 Farley, Iowa 52046  
 Ph. #563-744-3631 Fax #563-744-3629



**List Corners to be Indexed**

Corners	Section	Twp	Range
SW CORNER	20	85N	2W

2001 4592  
FILED  
RECORDERS OFFICE  
JONES COUNTY IOWA

01 DEC 31 AM 10:26

MARIE KRUTZFIELD  
RECORDER 6.00 pd

J.D. TJEPKES, 23428 RIDGE RD. ANAMOSA, IOWA, 52205 (319)462-6067

# UNITED STATES PUBLIC LAND SURVEY CORNER CERTIFICATE

LAND SURVEY MONUMENTS SITUATED IN SECTION 20, TOWNSHIP 85  
NORTH, RANGE 2 EAST OF THE 5TH P.M., JONES COUNTY, IOWA

**CORNERS TO BE INDEXED**

CORNER	SECTION	TOWNSHIP	RANGE
W-1/4	20	85N	2W

FD. 1/2" REBAR PER PREVIOUS TIES W-1/4 20-85-2

TOP STEEL POST, 1' ABOVE GROUND

155TH STREET

120TH AVE.

TIES FILED IN COUNTY ENGINEER'S OFFICE.

PREVIOUSLY RECORDED IN BOOK N/A, PAGE N/A. MONUMENT DESCRIPTION AND HOW ESTABLISHED FOUND 1/2" REBAR PER BILL BURGER TIES. SET NEW REFERENCE POINTS AND TIED OUT AS INDICATED. WEST QUARTER CORNER OF SECTION 20, TOWNSHIP 85 NORTH, RANGE 2 WEST, 5TH P.M., JONES COUNTY IOWA.

**CORNERS TO BE INDEXED**

CORNER	SECTION	TOWNSHIP	RANGE
CENTER	20	85N	2W

155TH AVE.

393' +- TO 115TH AVE.

SET 5/8"X24" REBAR W/YELLOW CAP LS 14807. CENTER SECTION 20-85-2

12" PVC PIPE

FIELD ENTRY

FD. 3/4" REBAR

PREVIOUSLY RECORDED IN BOOK N/A, PAGE N/A. MONUMENT DESCRIPTION AND HOW ESTABLISHED SET 5/8"X24" REBAR WITH YELLOW CAP LS 14807 PER SECTION BREAKDOWN. SET MONUMENT 0.3' BELOW ROAD SURFACE. SET REFERENCE POINTS AND TIED OUT AS INDICATED. CENTER SECTION 20, T85N, R2W, 5TH P.M., JONES COUNTY IOWA.

**CORNERS TO BE INDEXED**

CORNER	SECTION	TOWNSHIP	RANGE
SOUTHWEST	20	85N	2W

FDL CONC. MONUMENT SW COR. 20-85-2

120TH AVE.

PREVIOUSLY RECORDED IN BOOK N/A, PAGE N/A. MONUMENT DESCRIPTION AND HOW ESTABLISHED FOUND CONC. MONUMENT PER TIES FROM COUNTY ENGINEER'S OFFICE. SET REFERENCE POINTS AND TIED OUT AS INDICATED. SOUTHWEST CORNER SECTION 20, T85N, R2W, 5TH P.M., JONES COUNTY, IOWA.

**CORNERS TO BE INDEXED**

CORNER	SECTION	TOWNSHIP	RANGE
NW COR. SW,SW	20	85N	2W

HOUSE # 15297

X-NAILS WOOD POST

X-NAILS BRACE POST

X-NAILS COR. POST

SET 5/8"X24" REBAR W/YELLOW CAP LS 14807. NW COR. SW1/4, SW1/4 20-85-2

HOUSE #15396

FIELD ENTRY

120TH AVE.

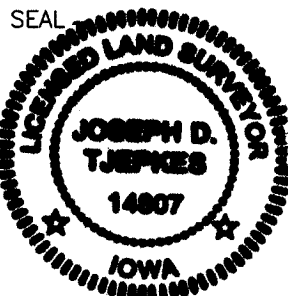
PREVIOUSLY RECORDED IN BOOK N/A, PAGE N/A. MONUMENT DESCRIPTION AND HOW ESTABLISHED SET 5/8"X24" REBAR WITH YELLOW CAP LS 14807 0.3' BELOW ROAD SURFACE PER SECTION BREAKDOWN. NW COR., SW1/4, SW1/4, SEC. 20, T85N, R2W OF THE 5TH P.M., JONES COUNTY, IOWA. SET REFERENCE POINTS AND TIED OUT AS INDICATED.

I hereby declare that this plat, survey or report was made by me or under my direct personal supervision and that I am a duly registered Land Surveyor under the laws of the State of Iowa.

Signed:

*Joseph D. Tjepkes* 12.29.01

Joseph D. Tjepkes L.S. Iowa Reg. No. 14807  
My Registration Renewal Date is December 31, 2002



J.D. TJEPKES LS 14807  
23428 RIDGE ROAD  
ANAMOSA, IOWA 52205