

1999 3403

FILED  
RECORDERS OFFICE  
JONES COUNTY IOWA

99 SEP 22 AM 9:50

MARIE KRUTZFIELD  
RECORDER

Prepared by Mr. Burger Land Surveyors

510 3rd Street West Court, Worthington, Iowa

Phone 319 - 855 2028

### UNITED STATES PUBLIC LAND SURVEY CORNER CERTIFICATE

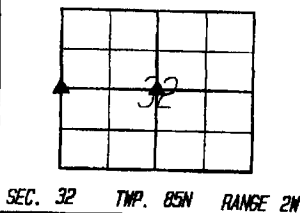
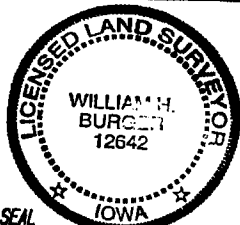
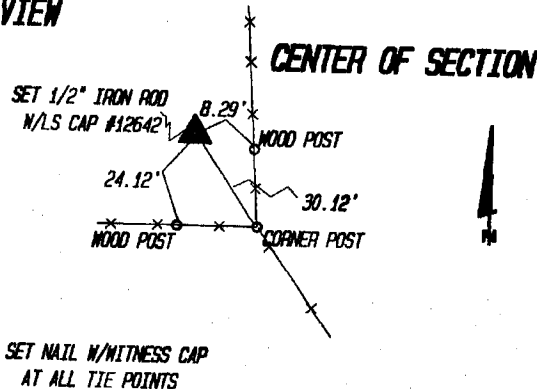
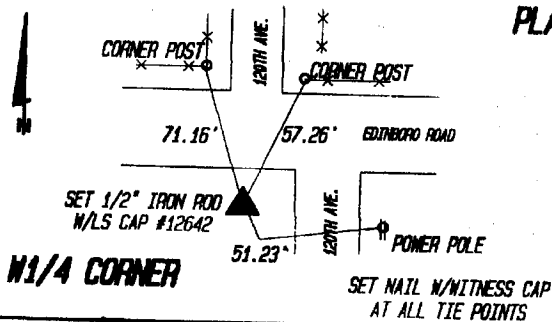
Land Survey Monuments situated in Section 32, Township 85N, Range 2W, of the Fifth Principal Meridian, Jones County, Iowa. Previously recorded in N/A in County Recorder's Office.

Monument Description and Remarks: (No Corner Certificates found at the County Recorders Office)

CENTER OF SECTION - RUN STRAIGHT LINES FROM OPPOSITE 1/4 CORNERS OF SAID SECTION 32 AND SET 1/2" IRON ROD  
W/YELLOW LS CAP #12642 AT POINT OF INTERSECTION

N1/4 CORNER - SET 1/2" IRON ROD W/YELLOW LS CAP #12642 ON LINE AND MIDWAY BETWEEN THE SW CORNER AND THE NW CORNER  
OF SAID SECTION 32

#### PLAN VIEW



I hereby certify that this land surveying document was prepared and related survey work was performed by me or under my direct personal supervision and that I am a duly licensed Land Surveyor under the laws of the State of Iowa.

William H. Burger 2/15/99  
William H. Burger Date

License number 12642

My license renewal date is December 31, 2000

Pages or Sheets covered by this seal: Sheet 1 of 1

#### CORNERS TO BE INDEXED

Corner

N1/4 CORNER	Section <u>32</u>	Twp <u>85N</u>	Range <u>2W</u>
CENTER OF SECTION	Section <u>32</u>	Twp <u>85N</u>	Range <u>2W</u>
	Section _____	Twp _____	Range _____
	Section _____	Twp _____	Range _____