

2003 3210

FILED
RECORDERS OFFICE
JONES COUNTY IOWA

03 JUL 11 AM 9:00

MARIE KRUTZFIELD
RECORDER NO FEE

J.D. TJEPKES, LS. JONES COUNTY ENGINEER'S OFFICE, 19501 HWY. 64, ANAMOSA, IOWA, 52205 (319)462-3785

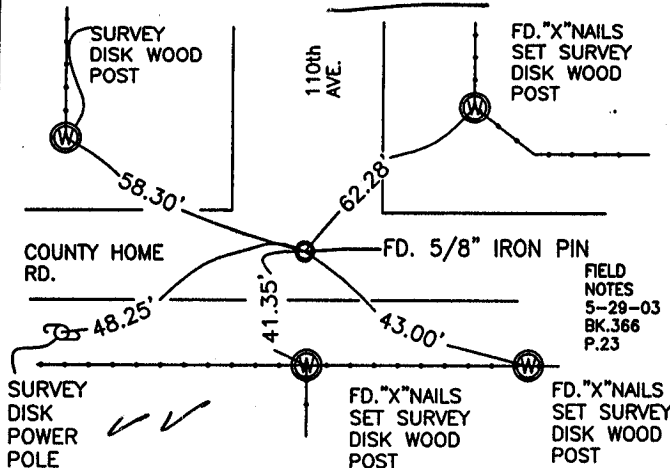
UNITED STATES PUBLIC LAND SURVEY CORNER CERTIFICATE

LAND SURVEY MONUMENTS SITUATED IN SECTION 32, TOWNSHIP 85
NORTH, RANGE 2 WEST OF THE 5TH P.M., JONES COUNTY, IOWA

CORNERS TO BE INDEXED

CORNER SECTION TOWNSHIP RANGE
NE 32 85N 2W

OFFICE FILE NO.
85232e_053003.jpg 1367

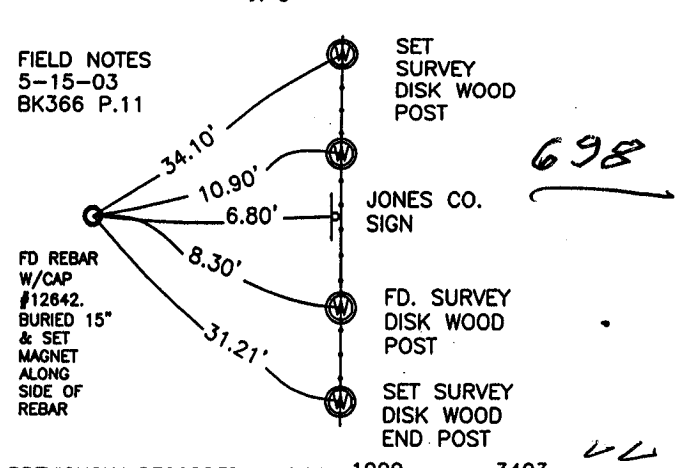
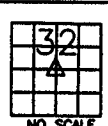


PREVIOUSLY RECORDED IN BOOK NA PAGE NA
MONUMENT DESCRIPTION AND HOW ESTABLISHED
FD. 5/8" IRON PIN AT INTERSECTION OF COUNTY HOME RD.
& 110th AVE. FD. "X" NAILS IN FENCE POSTS PER PREVIOUS
TIES IN JONES CO. ENGINEER'S OFFICE DATED "1956". NEW
TIES AS INDICATED.

CORNERS TO BE INDEXED

CORNER SECTION TOWNSHIP RANGE
CENTER 32 85N 2W

OFFICE FILE NO.
85232m_053003.jpg

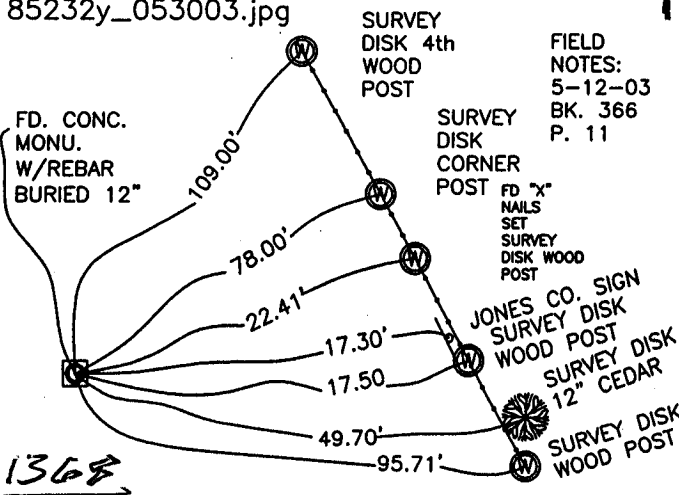


PREVIOUSLY RECORDED IN BOOK 1999 PAGE 3403
MONUMENT DESCRIPTION AND HOW ESTABLISHED
PER FOUND TIE. FOUND 1/2" IRON ROD W/CAP
#12642(BURGER). LOWERED PIN AND SET MAGNET ALONG
SIDE OF PIN, BURIED 15" IN CULTIVATED FIELD. SET JONES
CO. SIGN IN FENCE LINE AND TIED AS INDICATED.

CORNERS TO BE INDEXED

CORNER SECTION TOWNSHIP RANGE
SE 32 85N 2W

OFFICE FILE NO.
85232y_053003.jpg

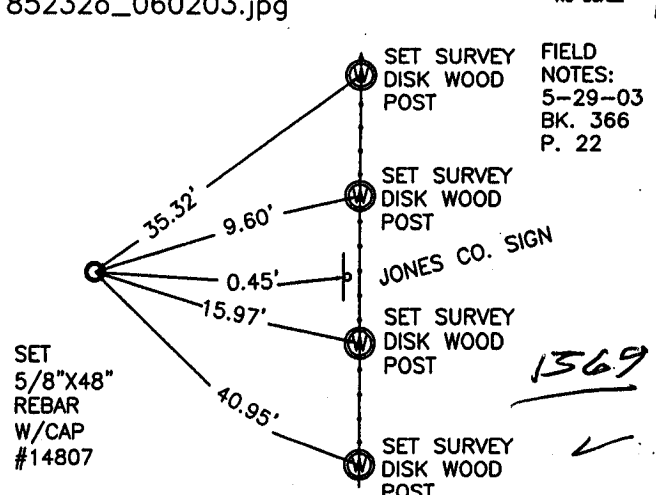
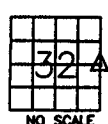


PREVIOUSLY RECORDED IN BOOK NA PAGE NA
MONUMENT DESCRIPTION AND HOW ESTABLISHED
PER DOT TIES REF. PROJ. FN-381 "1956" AT JONES CO.
ENGINEER'S OFFICE FOUND COMC. MONU. W/1/2" REBAR
BURIED 12". SET 5/8"x24" REBAR AND MAGNET ALONG SIDE
OF MONU. SET JONES CO. SIGN IN FENCE LINE. RETIED AS
INDICATED.

CORNERS TO BE INDEXED

CORNER SECTION TOWNSHIP RANGE
E1/4 32 85N 2W

OFFICE FILE NO.
85232o_060203.jpg

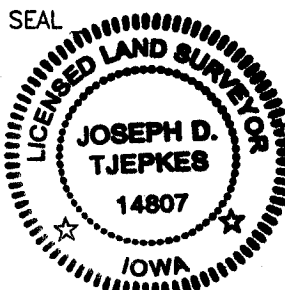


PREVIOUSLY RECORDED IN BOOK NA PAGE NA
MONUMENT DESCRIPTION AND HOW ESTABLISHED
SET 5/8"x48" REBAR W/CAP #14807, ON LINE & EQUAL
DISTANCE FROM FD. MONU AT SW CORNER SEC 32 & FD
IRON PIN AT NW CORNER SEC 32. SET JONES COUNTY SIGN
IN FENCE LINE RUNNING NORTH & SOUTH. TIES AS
INDICATED.

I hereby declare that this plat, survey or report was made by me or under my direct personal supervision and that I am a duly registered Land Surveyor under the laws of the State of Iowa.

Signed: *Joseph D. Tjepkes* 7.10.03

Joseph D. Tjepkes L.S. Iowa Reg. No. 14807
My Registration Renewal Date is December 31, 2004



J.D. TJEPKES LS 14807
JONES COUNTY
ENGINEER'S OFFICE

19501 HWY. 64,
ANAMOSA, IOWA,
52205 (319)462-3785

1999 3403

FILED
RECORDERS OFFICE
JONES COUNTY IOWA

99 SEP 22 AM 9:50

MARIE KRUTZFIELD
RECORDER

Prepared by Mr. Burger Land Surveyors

510 3rd Street West Court, Worthington, Iowa

Phone 319 - 855 2028

UNITED STATES PUBLIC LAND SURVEY CORNER CERTIFICATE

Land Survey Monuments situated in Section 32, Township 85N, Range 2W, of the Fifth Principal Meridian, Jones County, Iowa. Previously recorded in N/A in County Recorder's Office.

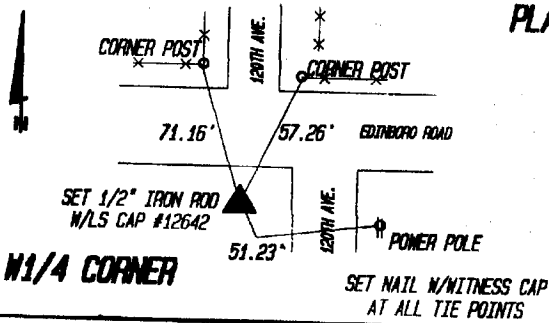
Monument Description and Remarks: (No Corner Certificates found at the County Recorders Office)

CENTER OF SECTION - RUN STRAIGHT LINES FROM OPPOSITE 1/4 CORNERS OF SAID SECTION 32 AND SET 1/2" IRON ROD

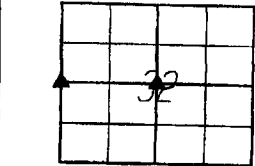
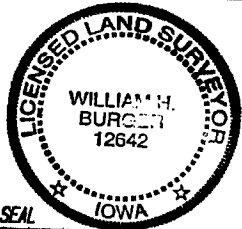
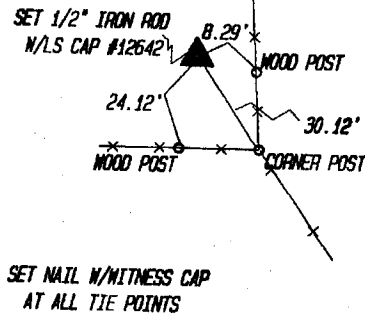
N/YELLOW LS CAP #12642 AT POINT OF INTERSECTION

N1/4 CORNER - SET 1/2" IRON ROD N/YELLOW LS CAP #12642 ON LINE AND MIDWAY BETWEEN THE SW CORNER AND THE NW CORNER OF SAID SECTION 32

PLAN VIEW



CENTER OF SECTION



SEC. 32 TWP. 85N RANGE 2W

I hereby certify that this land surveying document was prepared and related survey work was performed by me or under my direct personal supervision and that I am a duly licensed Land Surveyor under the laws of the State of Iowa.

William H. Burger 2/15/99
Date

William H. Burger
License number 12642

My license renewal date is December 31, 2000

Pages or Sheets covered by this seal: Sheet 1 of 1

CORNERS TO BE INDEXED

Corner

<u>N1/4 CORNER</u>	Section <u>32</u>	Twp <u>85N</u>	Range <u>2W</u>
<u>CENTER OF SECTION</u>	Section <u>32</u>	Twp <u>85N</u>	Range <u>2W</u>
_____	Section _____	Twp _____	Range _____
_____	Section _____	Twp _____	Range _____