

FILED
RECORDERS OFFICE
JONES COUNTY IOWA

03 JUL 11 AM 9:02

MARIE KRUTZFIELD
RECORDER *No Fee*

J.D. TJEPKES, LS. JONES COUNTY ENGINEER'S OFFICE, 19501 HWY. 64, ANAMOSA, IOWA, 52205 (319)462-3785

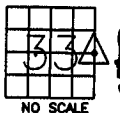
UNITED STATES PUBLIC LAND SURVEY CORNER CERTIFICATE

LAND SURVEY MONUMENTS SITUATED IN SECTION 33, TOWNSHIP 85
NORTH, RANGE 2 WEST OF THE 5TH P.M., JONES COUNTY, IOWA

CORNERS TO BE INDEXED

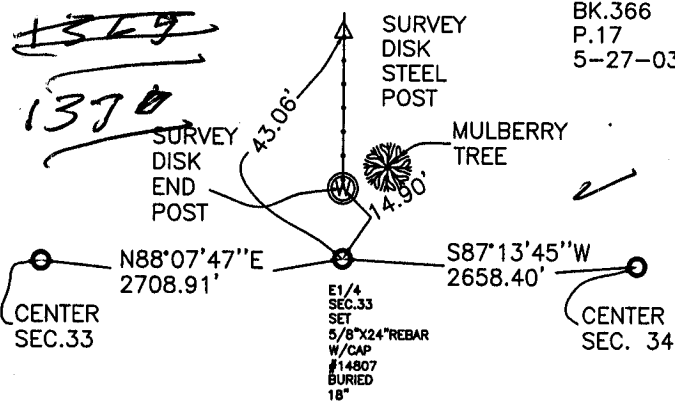
CORNER SECTION TOWNSHIP RANGE
E1/4 33 85N 2W

OFFICE FILE NO.
85233o_060303.jpg



NO SCALE

FIELD NOTES:
BK.366
P.17
5-27-03

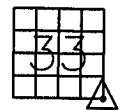


PREVIOUSLY RECORDED IN BOOK NA, PAGE NA
MONUMENT DESCRIPTION AND HOW ESTABLISHED _____
PER PRORATION AND FD. EVIDENCE BETWEEN SE COR. 33 & NE COR 33, SET 5/8"X24" REBAR W/CAP #14807 AND MAGNET IN LINE WITH FENCE NORTH IN CULTIVATED FIELD BURIED 18". TIED AS INDICATED.

CORNERS TO BE INDEXED

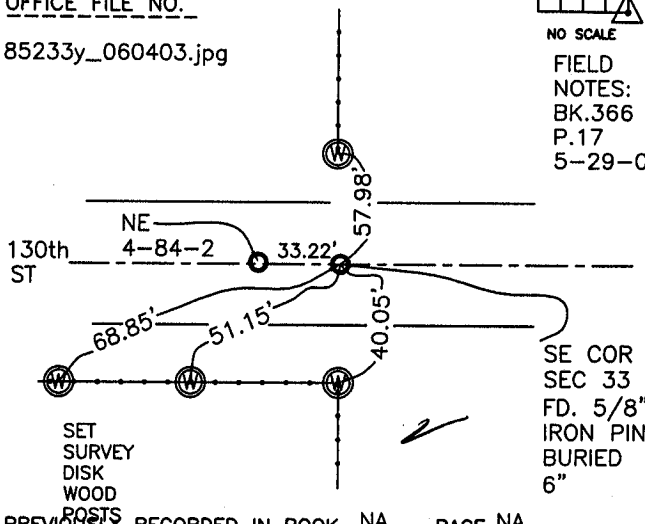
CORNER SECTION TOWNSHIP RANGE
SE 33 85N 2W

OFFICE FILE NO.
85233y_060403.jpg



NO SCALE

FIELD NOTES:
BK.366
P.17
5-29-03

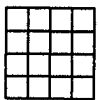


PREVIOUSLY RECORDED IN BOOK NA, PAGE NA
MONUMENT DESCRIPTION AND HOW ESTABLISHED _____
PER TIES IN JONES CO. ENGINEER'S OFFICE, FOUND 5/8"X24" IRON PIN. BK.#297 P.5. TIES AS INDICATED.

CORNERS TO BE INDEXED

CORNER SECTION TOWNSHIP RANGE

OFFICE FILE NO.



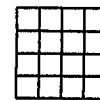
NO SCALE

PREVIOUSLY RECORDED IN BOOK _____, PAGE _____
MONUMENT DESCRIPTION AND HOW ESTABLISHED _____

CORNERS TO BE INDEXED

CORNER SECTION TOWNSHIP RANGE

OFFICE FILE NO.



NO SCALE

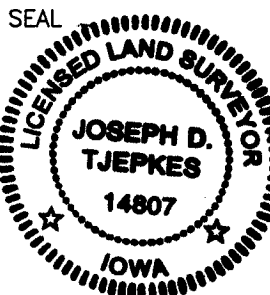
PREVIOUSLY RECORDED IN BOOK _____, PAGE _____
MONUMENT DESCRIPTION AND HOW ESTABLISHED _____

I hereby declare that this plat, survey or report was made by me or under my direct personal supervision and that I am a duly registered Land Surveyor under the laws of the State of Iowa.

Signed:

J.D. Tjepkes 7-10-03

Joseph D. Tjepkes L.S. Iowa Reg. No. 14807
My Registration Renewal Date is December 31, 2004



J.D. TJEPKES LS 14807
JONES COUNTY
ENGINEER'S OFFICE

19501 HWY. 64,
ANAMOSA, IOWA,
52205 (319)462-3785