

# SECTION CORNER CERTIFICATE

OF  
 LAND SURVEY MONUMENTS SITUATED IN SECTION 35, TOWNSHIP 85 NORTH,  
 RANGE 2 WEST, OF THE FIFTH PRINCIPAL MERIDIAN, JONES, COUNTY, IOWA.

PREVIOUSLY RECORDED IN BOOK \_\_\_\_\_ AT PAGE \_\_\_\_\_

FOR RECORDER'S USE

**REASON FOR PREPARING CERTIFICATE:**

- A) THERE IS NO CERTIFICATE FOR THE CORNER ON FILE WITH THE RECORDER OF THE COUNTY IN WHICH THE CORNER IS LOCATED.
- B) CORNER POSITION DIFFERS FROM THAT SHOWN IN THE PUBLIC RECORDS OF THE COUNTY IN WHICH THE CORNER IS LOCATED.
- C) THE CORNER MONUMENT HAS BEEN REPLACED OR MODIFIED.
- D) THE REFERENCE TIES REFERRED TO IN AN EXISTING PUBLIC RECORD ARE INCORRECT.

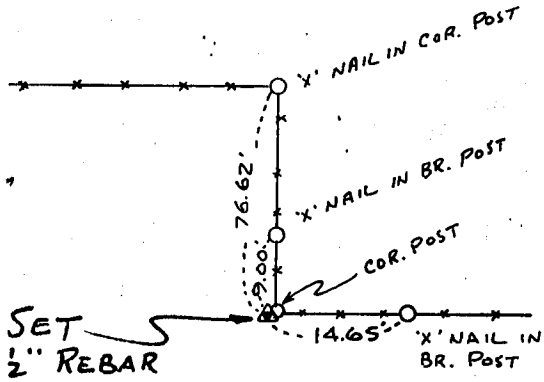
**MONUMENT DESCRIPTION AND REMARKS:**

W 1/4 CORNER SECTION 35-T85N-R2W SET 1/2" REBAR W/ U.S. CAP # 11954 FLUSH W/ GROUND

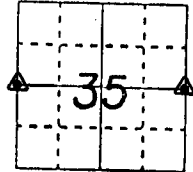
E 1/4 CORNER SECTION 35-T85N-R2W SET 1/2" REBAR W/ U.S. CAP # 11954 ON E COUNTY ROAD (80TH AVE.) IN LINE W/ FENCES EAST & WEST (RESET BY USING I.D.O.T. TIES)

## RECOVERY TIE DRAWING

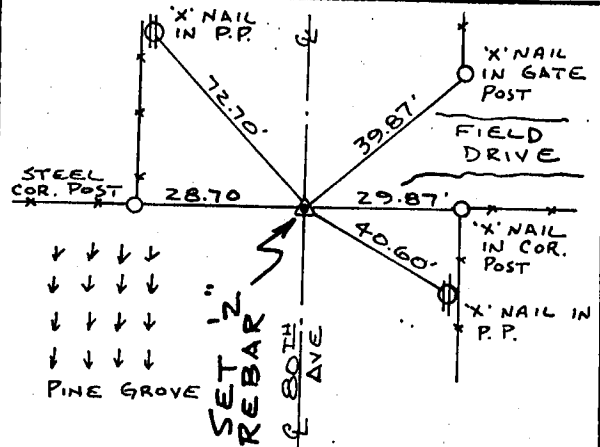
W 1/4 COR. SEC. 35-85-2



ON CARD E1/4 SEC. 34  
11-22-93 M.S.



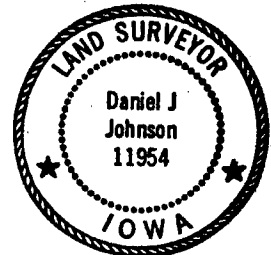
E 1/4 COR. SEC. 35-85-2



ON CARD 11-22-93 M.S.

I, DANIEL J. JOHNSON, CERTIFY THAT THE CORNER LOCATION(S) SHOWN ON THIS RECORD WERE DETERMINED BY ME OR UNDER MY DIRECTION AND CONTROL AND THAT THIS U.S. PUBLIC LAND SURVEY MONUMENT RECORD IS CORRECT AND COMPLETE TO THE BEST OF MY KNOWLEDGE AND BELIEF.

*Daniel J. Johnson*  
 DANIEL J. JOHNSON L.S. NO 11954 DATE 4-16-93



L I N E C O R D E R	GOVERNMENT CORNER 5/8" TIC PIN SET COVERLINE EXISTING FENCE LINE R.O.W. LINE	SHEET NO. _____ U.S. PUBLIC LAND SURVEY RECORD PROJECT NO. _____ TITLE: <b>JAMES &amp; MARLA PAULSEN</b>	HALL AND HALL ENGINEERS, INC. 226 29TH STREET DRIVE S.E. CEDAR RAPIDS, IOWA 52403 319-362-9548
	DWN <b>RWB</b>	CHK <b>DJT</b>	APP <b>GDM</b>
		SCALE <b>NONE</b>	P. NO. <b>OT 27</b> P. NO. <b>4787</b>