

2003 3213

FILED
RECORDERS OFFICE
JONES COUNTY IOWA

03 JUL 11 AM 9:03

MARIE KRUTZFIELD
RECORDER No Fee

J.D. TJEPKES, LS. JONES COUNTY ENGINEER'S OFFICE, 19501 HWY. 64, ANAMOSA, IOWA, 52205 (319)462-3785

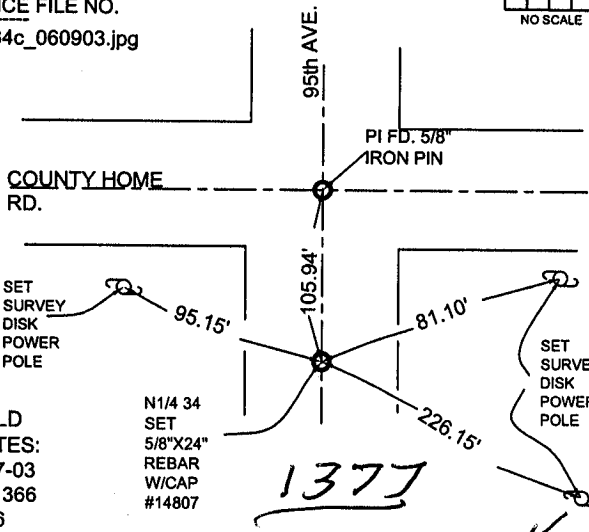
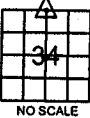
UNITED STATES PUBLIC LAND SURVEY CORNER CERTIFICATE

LAND SURVEY MONUMENTS SITUATED IN SECTION 34, TOWNSHIP 85
NORTH, RANGE 2 WEST OF THE 5TH P.M., JONES COUNTY, IOWA

CORNERS TO BE INDEXED

CORNER SECTION TOWNSHIP RANGE
N1/4 34 85N 2W

OFFICE FILE NO.
85234c_060903.jpg



FIELD NOTES:
5-27-03
BK. 366
P. 16

N1/4 34
SET
5/8\"X24\"
REBAR
W/CAP
#14807

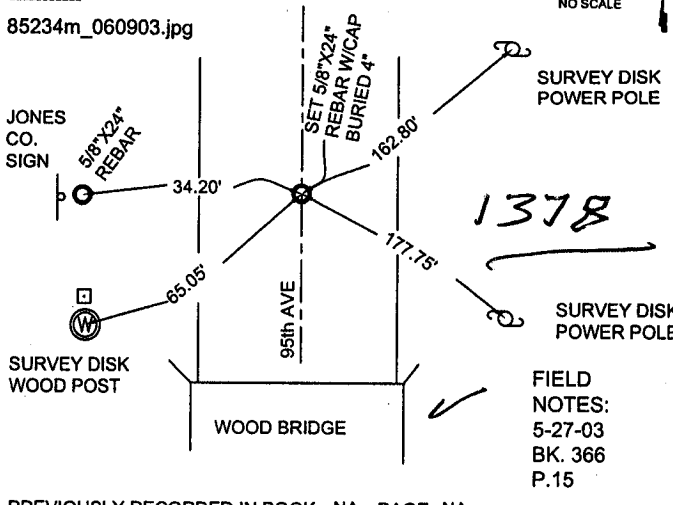
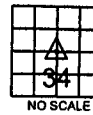
PREVIOUSLY RECORDED IN BOOK NA, PAGE NA
MONUMENT DESCRIPTION AND HOW ESTABLISHED

PER PRORATION FROM NW CORNER SEC.34 TO NE CORNER SEC. 34, SET
5/8\"X24\" REBAR W/CAP #14807 ON LINE AND EQUAL DISTANCE IN ROAD BED
OF 95th AVE. TIES AS INDICATED.

CORNERS TO BE INDEXED

CORNER SECTION TOWNSHIP RANGE
CENTER 34 85N 2W

OFFICE FILE NO.
85234m_060903.jpg



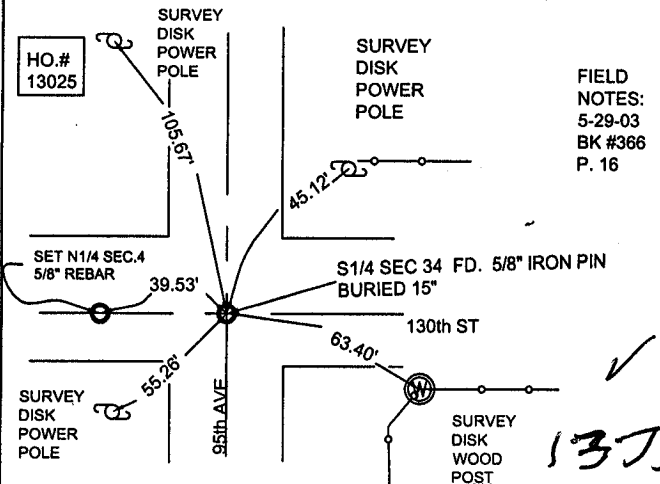
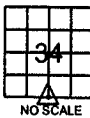
PREVIOUSLY RECORDED IN BOOK NA, PAGE NA
MONUMENT DESCRIPTION AND HOW ESTABLISHED

PER BREAKDOWN OF SECTION 34, CROSSING OF QT. CORNERS, SET
5/8\"X24\" REBAR W/ORANGE CAP #14807 IN 95th AVE ROADBED, BURIED 4\".
TIES AS INDICATED.

CORNERS TO BE INDEXED

CORNER SECTION TOWNSHIP RANGE
N1/4 34 85N 2W

OFFICE FILE NO.
85234w_061903.jpg



FIELD NOTES:
5-29-03
BK #366
P. 16

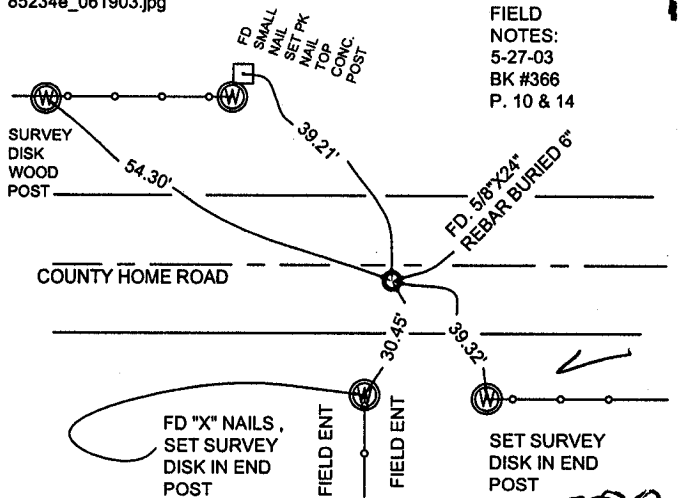
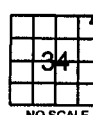
PREVIOUSLY RECORDED IN BOOK NA, PAGE NA
MONUMENT DESCRIPTION AND HOW ESTABLISHED

PER PHYSICAL EVIDENCE & ROAD RECORD IN JONES COUNTY
ENGINEER'S OFFICE OF ROAD NORTH & SOUTH, FOUND 5/8\" IRON PIN
BURIED 15\" IN INTERSECTION OF 95th AVE. & 130th ST. TIES AS INDICATED
FOR S1/4 COR. SECTION 34 T85N R2W.

CORNERS TO BE INDEXED

CORNER SECTION TOWNSHIP RANGE
NE 34 85N 2W

OFFICE FILE NO.
85234e_061903.jpg



FIELD NOTES:
5-27-03
BK #366
P. 10 & 14

PREVIOUSLY RECORDED IN BOOK NA, PAGE NA
MONUMENT DESCRIPTION AND HOW ESTABLISHED

FD 5/8\"X24\" REBAR BURIED 6\" PER TIE RECORDED AT JONES COUNTY
ENGINEER'S OFFICE DATED 1944, BK 104 P45. ALSO FD. \"X\" NAILS IN END
POST OF FENCE LINE SOUTH. TIED AS INDICATED NE CORNER SECTION 34
T85N R2W.

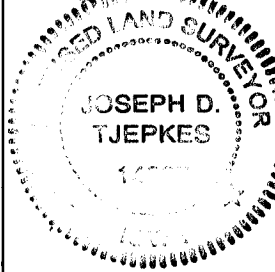
I hereby declare that this plat, survey or report
was made by me or under my direct personal
supervision and that I am a duly registered Land
Surveyor under the laws of the State of Iowa.

Signed:

Joseph D. Tjepkes 7.10.03

Joseph D. Tjepkes L.S. Iowa Reg. No. 14807
My Registration Renewal Date is December 31, 2004

SEAL



J.D. TJEPKES LS 14807
JONES COUNTY
ENGINEER'S OFFICE

19501 HWY. 64,
ANAMOSA, IOWA,
52205 (319)462-3785