

Instrument #: 2017-0696
 03/17/2017 10:53:07 AM Total Pages: 1
 ZSC SECTION CORNER CERTIFICATE
 Recording Fee: \$7.00 Transfer Tax: \$0
 Sheri L. Jones, Recorder, Jones County Iowa

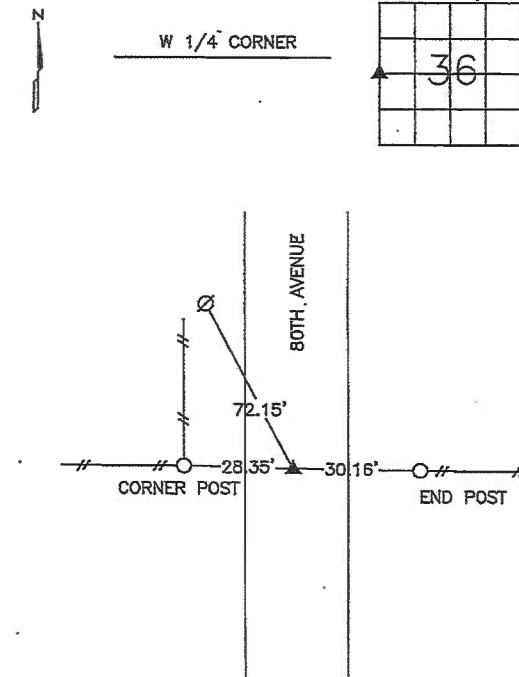


PREPARED BY
 STEPHEN MICHAEL BRAIN, BRAIN ENGINEERING, INC., 1540 MIDLAND COURT NE, CEDAR RAPIDS, IOWA PH. (319) 294-9424

UNITED STATES PUBLIC LAND SURVEY CORNER CERTIFICATE

LAND SURVEY MONUMENTS SITUATED IN SECTION 36, TOWNSHIP 85 NORTH
 RANGE 2 WEST OF THE 5TH P.M., JONES COUNTY, IOWA.

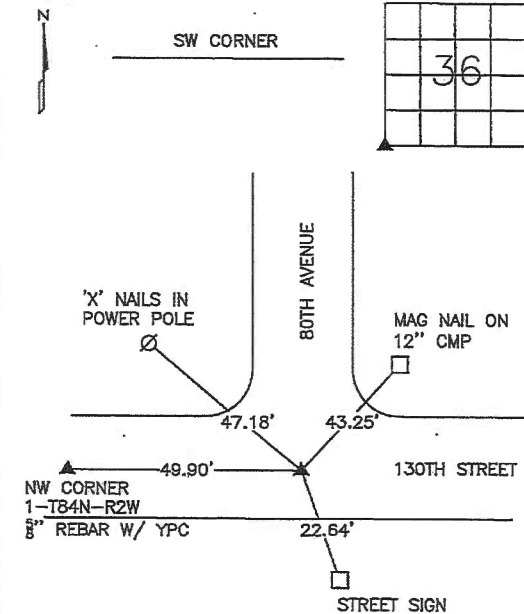
NO SCALE



ALL TIES FOUND
 PLASTIC SURVEY
 TAGS

PREVIOUSLY RECORDED IN BOOK _____ PAGE _____
 MONUMENT DESCRIPTION AND HOW ESTABLISHED:
 FOUND 1/2" REBAR 6" BELOW ROAD SURFACE.

NO SCALE



NW CORNER
 1-TB4N-R2W
 3/8" REBAR W/ YPC

STREET SIGN

PREVIOUSLY RECORDED IN BOOK _____ PAGE _____
 MONUMENT DESCRIPTION AND HOW ESTABLISHED:
 FOUND 1/2" REBAR 4" BELOW ROAD SURFACE.



I hereby certify that this land surveying document and the related survey work was performed by me or under my direct personal supervision, and that I am a duly licensed Land Surveyor under the laws of the State of Iowa.
 Signed: *[Signature]* Date: 3/15/17
 Stephen Michael Brain, L.S.
 My License Renewal Date is December 31, 2018
 License Number 9647
 Pages or sheets covered by this seal: 1/1

- A.THERE IS NO CERTIFICATE FOR THE CORNER ON FILE WITH THE RECORDER OF THE COUNTY IN WHICH THE CORNER IS LOCATED
- B.THE SURVEYOR IN RESPONSIBLE CHARGE OF THE LAND SURVEYING ACCEPTS A CORNER POSITION WHICH DIFFERS FROM THAT SHOWN IN THE PUBLIC RECORDS OF THE COUNTY IN WHICH THE CORNER IS LOCATED.
- C.THE CORNER MONUMENT IS REPLACED OR MODIFIED IN ANY WAY.
- D.THE REFERENCE TIES REFERRED TO IN AN EXISTING PUBLIC RECORD ARE NOT CORRECT.

CORNERS TO BE INDEXED

CORNER	SECTION	TOWNSHIP	RANGE
W 1/4 CORNER	36	T85N	R2W
SW CORNER	36	T85N	R2W

BRAIN ENGINEERING, INC.
 1540 MIDLAND COURT NE
 CEDAR RAPIDS, IOWA 52402
 (319) 294-9424

284917-20

mas 3/15/17

2003 3211

FILED
RECORDERS OFFICE
JONES COUNTY IOWA

03 JUL 11 AM 9:01

MARIE KRUTZFIELD
RECORDER *No Fee*

J.D. TJEPKES, L.S. JONES COUNTY ENGINEER'S OFFICE, 19501 HWY. 64, ANAMOSA, IOWA, 52205 (319)462-3785

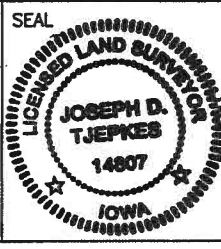
UNITED STATES PUBLIC LAND SURVEY CORNER CERTIFICATE

LAND SURVEY MONUMENTS SITUATED IN SECTION 35, TOWNSHIP 85
NORTH, RANGE 2 WEST OF THE 5TH P.M., JONES COUNTY, IOWA

<p>CORNERS TO BE INDEXED</p> <p>CORNER SECTION TOWNSHIP RANGE E1/4 35 85N 2W</p> <p>OFFICE FILE NO. 85235o_071003.jpg</p> <p>PREVIOUSLY RECORDED IN BOOK <u>NA</u>, PAGE <u>NA</u> MONUMENT DESCRIPTION AND HOW ESTABLISHED _____</p> <p>FD. 1/2" REBAR W/LS CAP #11954 (JOHNSON) PER TIES RECORDED IN JONES CO. ENGINEER'S OFFICE. RETIED AS INDICATED.</p>	<p>CORNERS TO BE INDEXED</p> <p>CORNER SECTION TOWNSHIP RANGE</p> <p>OFFICE FILE NO.</p> <p>PREVIOUSLY RECORDED IN BOOK _____, PAGE _____ MONUMENT DESCRIPTION AND HOW ESTABLISHED _____</p>
<p>CORNERS TO BE INDEXED</p> <p>CORNER SECTION TOWNSHIP RANGE</p> <p>OFFICE FILE NO.</p> <p>PREVIOUSLY RECORDED IN BOOK _____, PAGE _____ MONUMENT DESCRIPTION AND HOW ESTABLISHED _____</p>	<p>CORNERS TO BE INDEXED</p> <p>CORNER SECTION TOWNSHIP RANGE</p> <p>OFFICE FILE NO.</p> <p>PREVIOUSLY RECORDED IN BOOK _____, PAGE _____ MONUMENT DESCRIPTION AND HOW ESTABLISHED _____</p>

I hereby declare that this plat, survey or report was made by me or under my direct personal supervision and that I am a duly registered Land Surveyor under the laws of the State of Iowa.

Signed: *J.D. Tjepkes*
Joseph D. Tjepkes L.S. Iowa Reg. No. 14807
My Registration Renewal Date is December 31, 2004



J.D. TJEPKES LS 14807
JONES COUNTY
ENGINEER'S OFFICE
19501 HWY. 64,
ANAMOSA, IOWA,
52205 (319)462-3785

SECTION CORNER CERTIFICATE

OF
 LAND SURVEY MONUMENTS SITUATED IN SECTION 35, TOWNSHIP 85 NORTH,
 RANGE 2 WEST, OF THE FIFTH PRINCIPAL MERIDIAN, JONES, COUNTY, IOWA.

PREVIOUSLY RECORDED IN BOOK _____ AT PAGE _____

FOR RECORDER'S USE

REASON FOR PREPARING CERTIFICATE:

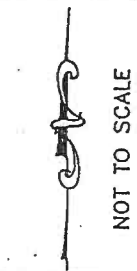
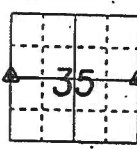
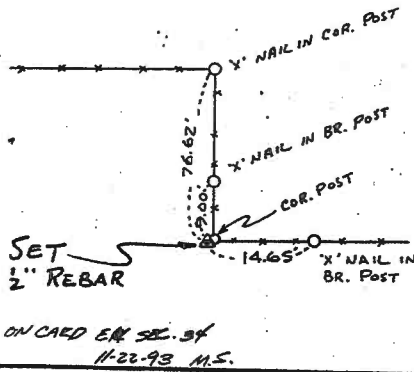
- A) THERE IS NO CERTIFICATE FOR THE CORNER ON FILE WITH THE RECORDER OF THE COUNTY IN WHICH THE CORNER IS LOCATED.
- B) CORNER POSITION DIFFERS FROM THAT SHOWN IN THE PUBLIC RECORDS OF THE COUNTY IN WHICH THE CORNER IS LOCATED.
- C) THE CORNER MONUMENT HAS BEEN REPLACED OR MODIFIED.
- D) THE REFERENCE TIES REFERRED TO IN AN EXISTING PUBLIC RECORD ARE INCORRECT.

MONUMENT DESCRIPTION AND REMARKS :

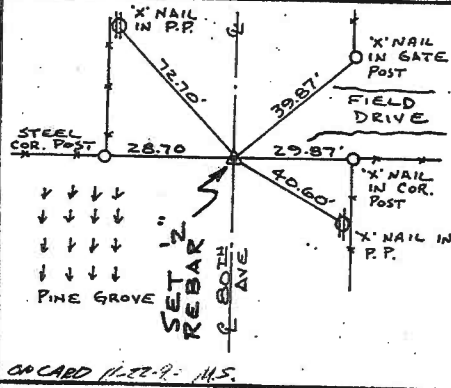
W 1/4 CORNER SECTION 35-T85N-R2W SET 1/2" REBAR W/L.S. CAP # 11954 FLUSH W/ GROUND
E 1/4 CORNER SECTION 35-T85N-R2W SET 1/2" REBAR W/ L.S. CAP # 11954 ON E COUNTY ROAD (80TH AVE.) IN LINE W/ FENCES EAST & WEST (RESET BY USING I.D.O.T. TIES)

RECOVERY TIE DRAWING

W 1/4 COR. SEC. 35-85-2

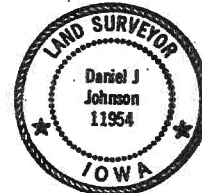


E 1/4 COR. SEC. 35-85-2



I, DANIEL J. JOHNSON, CERTIFY THAT THE CORNER LOCATION(S) SHOWN ON THIS RECORD WERE DETERMINED BY ME OR UNDER MY DIRECTION AND CONTROL AND THAT THIS U.S. PUBLIC LAND SURVEY MONUMENT RECORD IS CORRECT AND COMPLETE TO THE BEST OF MY KNOWLEDGE AND BELIEF.

Daniel J. Johnson
 DANIEL J. JOHNSON L.S. NO 11954 DATE 4-16-93



LEGEND
 ▲ GOVERNMENT CORNER
 ○ 5/8" IRON PIN SET
 --- COVERLINE
 - - - EXISTING FENCE LINE
 - - - R.O.W. LINE

SHEET NO. _____
 U.S. PUBLIC LAND SURVEY RECORD

PROJECT NO. _____
JAMES & MARLA PAULSEN

HALL AND HALL ENGINEERS, INC.
 226 29TH STREET DRIVE S.E.
 CEDAR RAPIDS, IOWA 52403
 319-362-9548

D	N	RWB	KHC	DJT	AP	GDM	DATE	2-1-93	SCALE	NONE	P. NO.	B	OT 27	P. NO.	S	4787
---	---	-----	-----	-----	----	-----	------	--------	-------	------	--------	---	-------	--------	---	------