

Instrument #: 2021-0423
 02/02/2021 02:33:31 PM Total Pages: 1
 ZSC SECTION CORNER CERTIFICATE
 Recording Fee: \$7.00 Transfer Tax: \$0
 Sheri L. Jones, Recorder, Jones County Iowa



Prepared by Wm. Burger Land Surveyor 510 3rd Street West Court, Worthington, Iowa 52078 Phone 563 - 855 2028

UNITED STATES PUBLIC LAND SURVEY CORNER CERTIFICATE

Land Survey Monuments situated in Section 35, Township 85N, Range 2W, of the Fifth Principal Meridian, Jones County, Iowa. Previously recorded in N/A in the Office of the County Recorder

Monument Description and Remarks: (No Corner Certificates found at the County Recorder's Office)

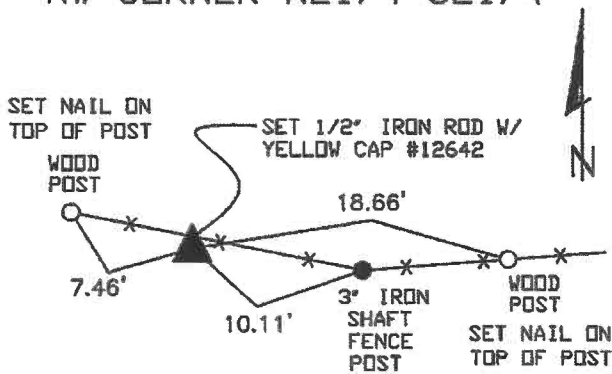
NW CORNER NE1/4 SE1/4 - SET 1/2" IRON ROD WITH YELLOW CAP #12642 - SET ON LINE AND MIDWAY BETWEEN THE CENTER OF SECTION AND THE E1/4 CORNER

SW CORNER NE1/4 SE1/4 - SET 1/2" IRON ROD WITH YELLOW CAP #12642 - RUN STRAIGHT LINES FROM OPPOSITE 1/4 1/4 CORNERS AND SET AT THE POINT OF INTERSECTION

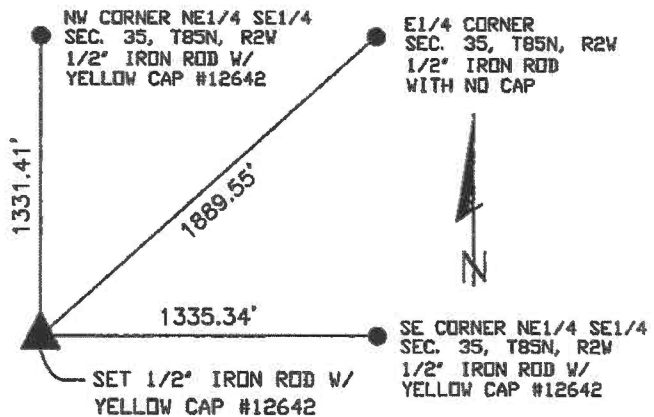
SE CORNER NE1/4 SE1/4 - SET 1/2" IRON ROD W/ YELLOW CAP #12642 - SET ON LINE AND MIDWAY BETWEEN THE SE CORNER AND THE E1/4 CORNER

PLAN VIEW

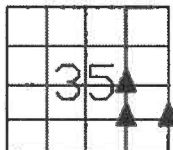
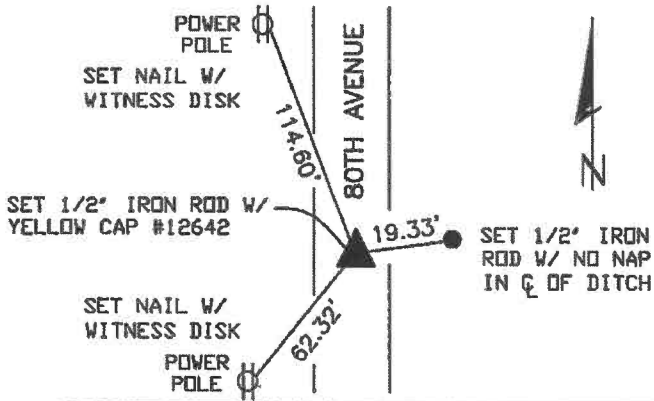
NW CORNER NE1/4 SE1/4



SW CORNER NE1/4 SE1/4



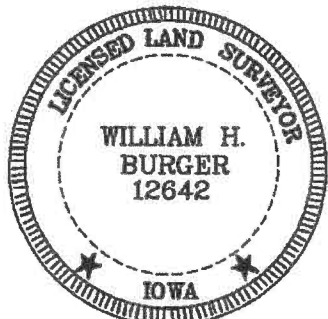
SE CORNER NE1/4 SE1/4



SEC. 35 TWP. 85N RANGE 2W

CORNERS TO BE INDEXED

| | | | |
|-----------------------|----|-----|----|
| NW CORNER NE1/4 SE1/4 | 35 | 85N | 2W |
| SW CORNER NE1/4 SE1/4 | 35 | 85N | 2W |
| SE CORNER NE1/4 SE1/4 | 35 | 85N | 2W |



I hereby certify that this land surveying document was prepared and related survey work was performed by me or under my direct personal supervision and that I am a duly licensed Land Surveyor under the laws of the State of Iowa.

William H. Burger 2/2/21
 William H. Burger Date

License number 12642

My license renewal date is December 31, 2022

Pages or Sheets covered by this seal: Sheet 1 of 1