

Instrument #: 2017-0695
 03/17/2017 10:53:07 AM Total Pages: 1
 ZSC SECTION CORNER CERTIFICATE
 Recording Fee: \$7.00 Transfer Tax: \$0
 Sheri L. Jones, Recorder, Jones County Iowa

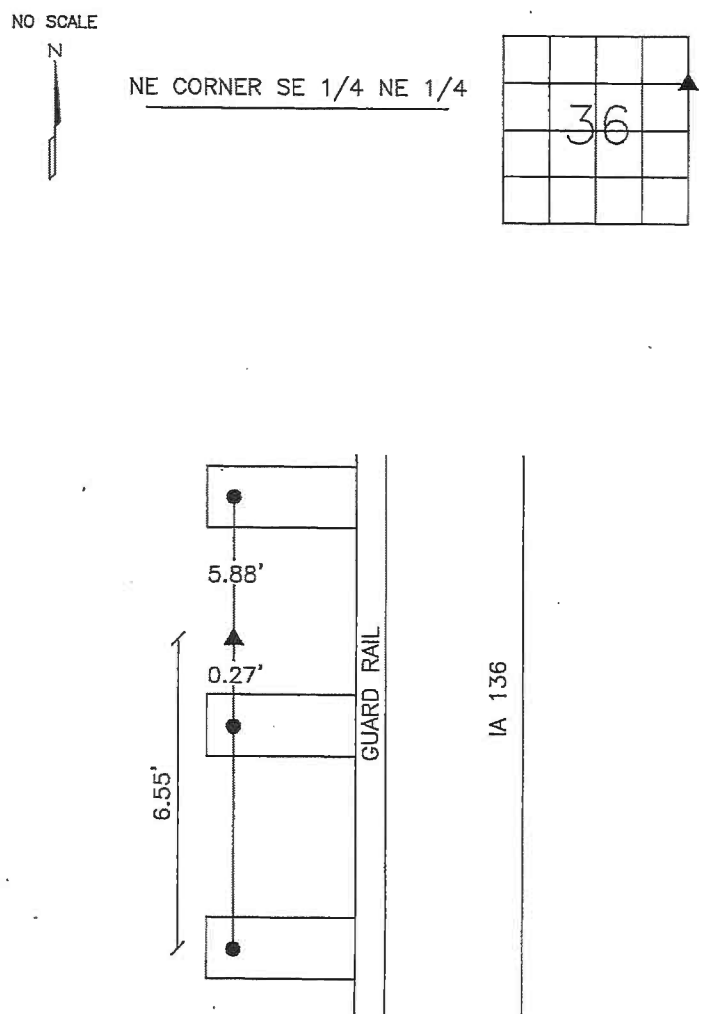
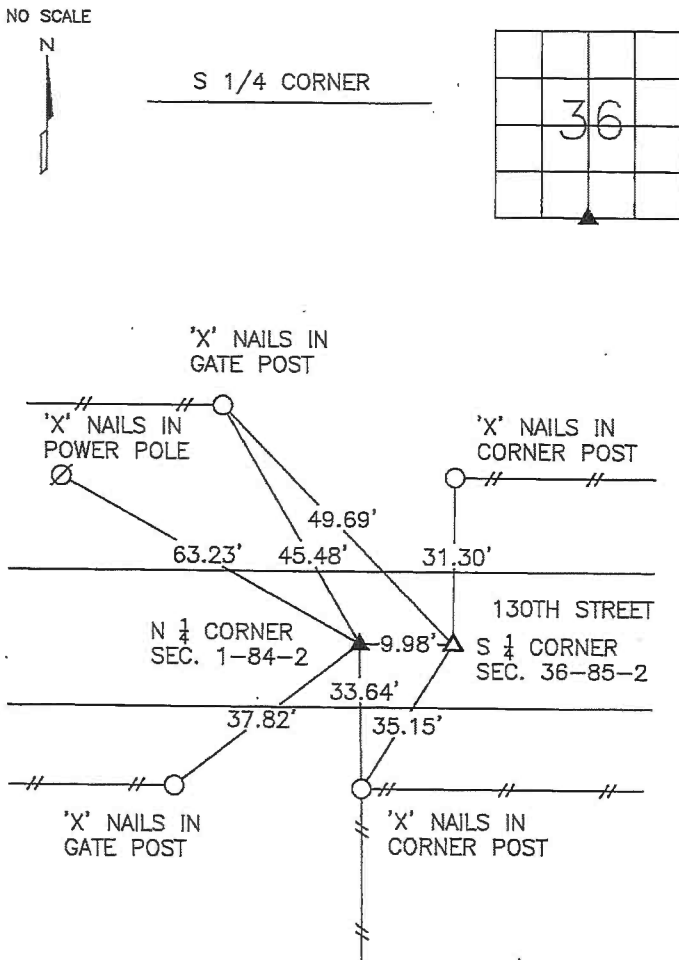


PREPARED BY

STEPHEN MICHAEL BRAIN, BRAIN ENGINEERING, INC., 1540 MIDLAND COURT NE, CEDAR RAPIDS, IOWA PH. (319) 294-9424

UNITED STATES PUBLIC LAND SURVEY CORNER CERTIFICATE

LAND SURVEY MONUMENTS SITUATED IN SECTION 36, TOWNSHIP 85 NORTH
 RANGE 2 WEST OF THE 5TH P.M., JONES COUNTY, IOWA.



ALL TIES MAG NAILS WITH PLASTIC TAGS ON GUARD RAIL POSTS

PREVIOUSLY RECORDED IN BOOK _____ PAGE _____
 MONUMENT DESCRIPTION AND HOW ESTABLISHED:
 SET 1/2" REBAR WITH YELLOW PLASTIC CAP #9647 AS A MIDPOINT ON THE LINE BETWEEN SW CORNER AND SE CORNER OF SECTION 36.

PREVIOUSLY RECORDED IN BOOK _____ PAGE _____
 MONUMENT DESCRIPTION AND HOW ESTABLISHED:
 FOUND 1/2" REBAR WITH YELLOW PLASTIC CAP #12642 AS RECORDED IN BOOK P PAGE 155, JONES COUNTY RECORDER'S OFFICE, IOWA.



I hereby certify that this land surveying document and the related survey work was performed by me or under my direct personal supervision and that I am a duly licensed Land Surveyor under the laws of the State of Iowa.
 Signed _____ Date 3/15/17
 Stephen Michael Brain, L.S.
 My License Renewal Date is December 31, 2018
 License Number 9647
 Pages or sheets covered by this seal: 1/1

- A. THERE IS NO CERTIFICATE FOR THE CORNER ON FILE WITH THE RECORDER OF THE COUNTY IN WHICH THE CORNER IS LOCATED
- B. THE SURVEYOR IN RESPONSIBLE CHARGE OF THE LAND SURVEYING ACCEPTS A CORNER POSITION WHICH DIFFERS FROM THAT SHOWN IN THE PUBLIC RECORDS OF THE COUNTY IN WHICH THE CORNER IS LOCATED.
- C. THE CORNER MONUMENT IS REPLACED OR MODIFIED IN ANY WAY.
- D. THE REFERENCE TIES REFERRED TO IN AN EXISTING PUBLIC RECORD ARE NOT CORRECT.

CORNERS TO BE INDEXED			
CORNER	SECTION	TOWNSHIP	RANGE
S 1/4 CORNER	36	T85N	R2W
NE CORNER	36	T85N	R2W
SE 1/4 NE 1/4			

BRAIN ENGINEERING, INC.
 1540 MIDLAND COURT NE
 CEDAR RAPIDS, IOWA 52402
 (319) 294-9424

284917-20
 mab
 3/15/17

2004 3365

FILED
RECORDERS OFFICE
JONES COUNTY IOWA

04 SEP -8 AM 10:52

MARIE KRUTZFIELD
RECORDER 7-00 Pd

Prepared by Wm. Burger Land Surveyors 510 3rd Street West Court, Worthington, Iowa Phone 563 - 855 2028

UNITED STATES PUBLIC LAND SURVEY CORNER CERTIFICATE

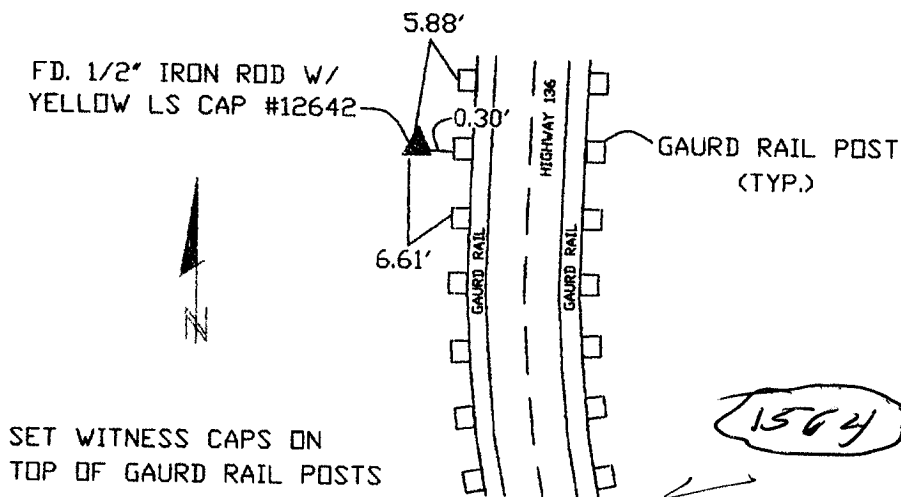
Land Survey Monuments situated in Section 31, Township 85N, Range 1W, of the Fifth Principal Meridian, Jones County, Iowa. Previously recorded in N/A in the Office of the County Recorder

Monument Description and Remarks: (No Corner Certificates found at the County Recorders Office)

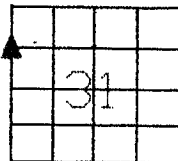
SW CORNER NW1/4 NW1/4 - FOUND 1/2" IRON ROD W/ YELLOW LS CAP #12642

PLAN VIEW

SW CORNER NW1/4 NW1/4



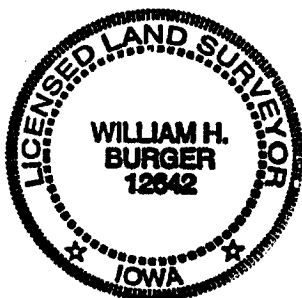
851316-090704/26



SEC. 31 TWP. 85N RANGE 1W

CORNERS TO BE INDEXED

SW CORNER NW1/4 NW1/4 31 85N 1W



I hereby certify that this land surveying document was prepared and related survey work was performed by me or under my direct personal supervision and that I am a duly licensed Land Surveyor under the laws of the State of Iowa.

William H. Burger 9/2/09
William H. Burger Date

License number 12642

My license renewal date is December 31, 2004

Pages or Sheets covered by this seal Sheet 1 of 1