

# THIS IS NOT A CERTIFICATION

JONES COUNTY ENGINEER'S OFFICE, 19501 HWY. 64, ANAMOSA, IOWA, 52205 (319)462-3785

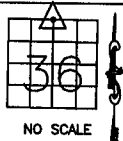
## UNITED STATES PUBLIC LAND SURVEY CORNER CERTIFICATE

LAND SURVEY MONUMENTS SITUATED IN SECTION 36, TOWNSHIP 85  
NORTH, RANGE 2 WEST OF THE 5TH P.M., JONES COUNTY, IOWA

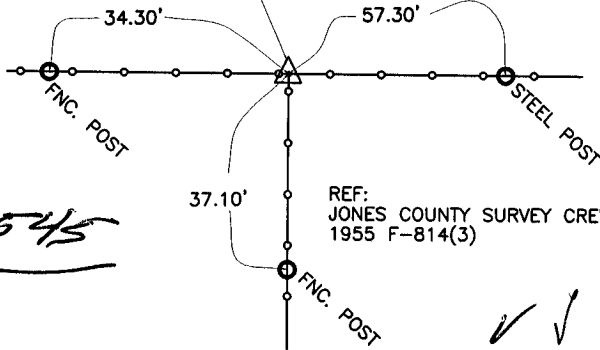
### CORNERS TO BE INDEXED

CORNER SECTION TOWNSHIP RANGE  
N-QUARTER 36 85N 2W  
OFFICE FILE NO.

85236c\_010705.tif



NORTH QUARTER CORNER  
SECTION 36-85-2  
FD. CONC. MONUMENT  
1955



REF:  
JONES COUNTY SURVEY CREW:  
1955 F-814(3)

1545

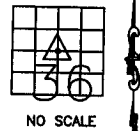
PREVIOUSLY RECORDED IN BOOK \_\_\_\_\_, PAGE \_\_\_\_\_  
MONUMENT DESCRIPTION AND HOW ESTABLISHED \_\_\_\_\_ FOUND

CONCRETE MONUMENT AT THE NORTH QUARTER CORNER SECTION 36, TOWNSHIP 85 NORTH, RANGE 2 WEST OF THE 5TH PRINCIPAL MERIDIAN, JONES COUNTY, IOWA. SET REFERENCE POINTS AS INDICATED.

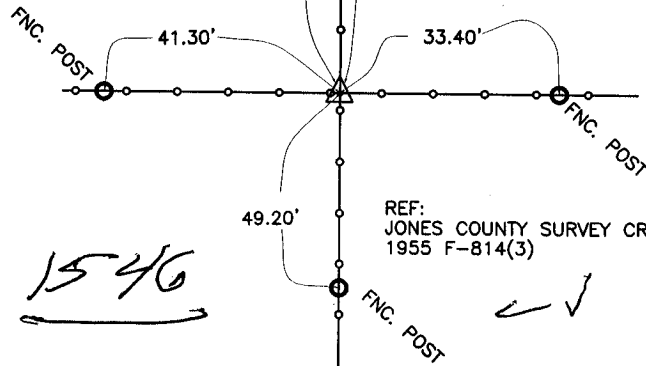
### CORNERS TO BE INDEXED

CORNER SECTION TOWNSHIP RANGE  
CENTER 36 85N 2W  
OFFICE FILE NO.

85236m\_010705.tif



CENTER  
SECTION 36-85-2  
FD. CONC. MONUMENT  
1955



REF:  
JONES COUNTY SURVEY CREW:  
1955 F-814(3)

1546

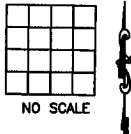
PREVIOUSLY RECORDED IN BOOK \_\_\_\_\_, PAGE \_\_\_\_\_  
MONUMENT DESCRIPTION AND HOW ESTABLISHED \_\_\_\_\_ FOUND

CONCRETE MONUMENT AT THE CENTER QUARTER CORNER SECTION 36, TOWNSHIP 85 NORTH, RANGE 2 WEST OF THE 5TH PRINCIPAL MERIDIAN, JONES COUNTY, IOWA. SET REFERENCE POINTS AS INDICATED.

### CORNERS TO BE INDEXED

CORNER SECTION TOWNSHIP RANGE

OFFICE FILE NO.



### CORNERS TO BE INDEXED

CORNER SECTION TOWNSHIP RANGE

OFFICE FILE NO.

