

Instrument #: 2017-0697  
 03/17/2017 10:53:07 AM Total Pages: 1  
 ZSC SECTION CORNER CERTIFICATE  
 Recording Fee: \$7.00 Transfer Tax: \$0  
 Sheri L. Jones, Recorder, Jones County Iowa



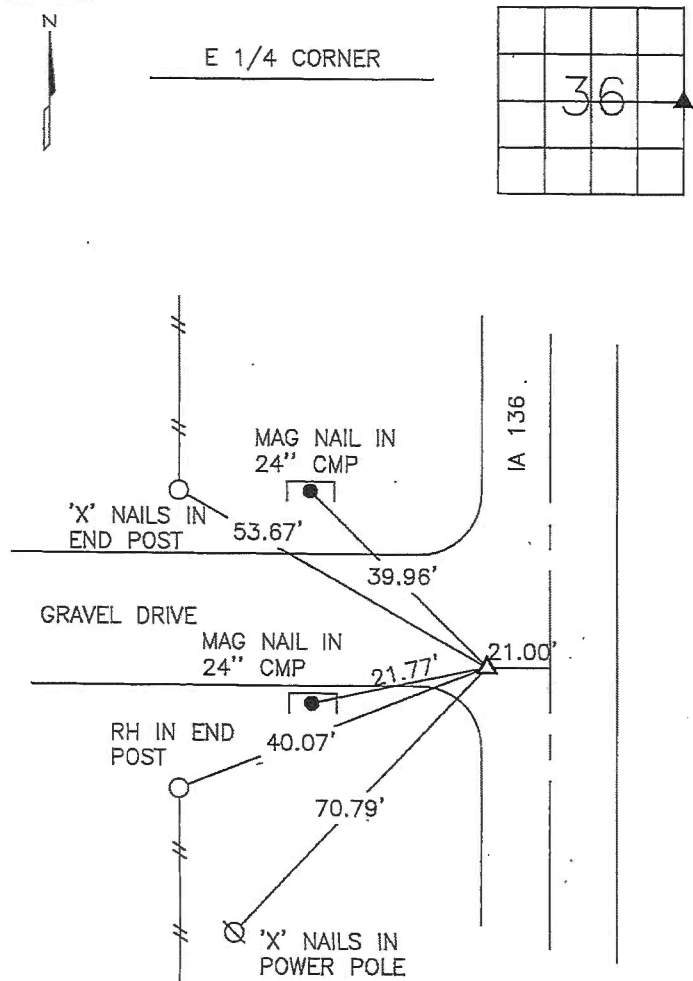
PREPARED BY

STEPHEN MICHAEL BRAIN, BRAIN ENGINEERING, INC., 1540 MIDLAND COURT NE, CEDAR RAPIDS, IOWA PH. (319) 294-9424

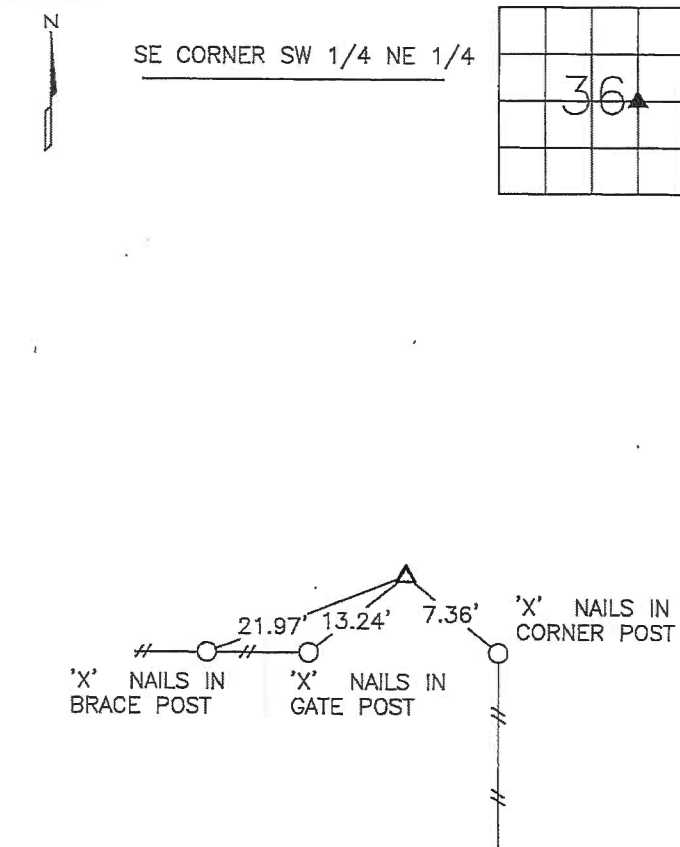
# UNITED STATES PUBLIC LAND SURVEY CORNER CERTIFICATE

LAND SURVEY MONUMENTS SITUATED IN SECTION 36, TOWNSHIP 85 NORTH  
 RANGE 2 WEST OF THE 5TH P.M., JONES COUNTY, IOWA.

NO SCALE



NO SCALE



PREVIOUSLY RECORDED IN BOOK \_\_\_\_\_ PAGE \_\_\_\_\_  
 MONUMENT DESCRIPTION AND HOW ESTABLISHED:  
 SET 1/2" REBAR WITH YELLOW PLASTIC CAP #9647 AS THE  
 MIDPOINT ON THE LINE BETWEEN NE CORNER AND SE  
 CORNER OF SECTION 36.

PREVIOUSLY RECORDED IN BOOK \_\_\_\_\_ PAGE \_\_\_\_\_  
 MONUMENT DESCRIPTION AND HOW ESTABLISHED:  
 SET 1/2" REBAR WITH YELLOW PLASTIC CAP #9647 AS THE  
 MIDPOINT ON THE LINE BETWEEN CENTER AND E 1/4  
 CORNER OF SECTION 36.



I hereby certify that this land surveying document  
 and the related survey work was performed by me  
 or under my direct personal supervision and that  
 I am a duly licensed Land Surveyor under the laws  
 of the State of Iowa.  
 Signed \_\_\_\_\_ Date 3/15/17  
 Stephen Michael Brain, L.S.  
 My License Renewal Date is December 31, 2018  
 License Number 9647  
 Pages or sheets covered by this seal: 1/1

- A.THERE IS NO CERTIFICATE FOR THE CORNER ON FILE WITH THE RECORDER OF THE COUNTY IN WHICH THE CORNER IS LOCATED
- B.THE SURVEYOR IN RESPONSIBLE CHARGE OF THE LAND SURVEYING ACCEPTS A CORNER POSITION WHICH DIFFERS FROM THAT SHOWN IN THE PUBLIC RECORDS OF THE COUNTY IN WHICH THE CORNER IS LOCATED.
- C.THE CORNER MONUMENT IS REPLACED OR MODIFIED IN ANY WAY.
- D.THE REFERENCE TIES REFERRED TO IN AN EXISTING PUBLIC RECORD ARE NOT CORRECT.

CORNERS TO BE INDEXED

CORNER	SECTION	TOWNSHIP	RANGE
E 1/4 CORNER	36	T85N	R2W
SE CORNER	36	T85N	R2W
SW 1/4 SE 1/4.			

BRAIN ENGINEERING, INC.  
 1540 MIDLAND COURT NE  
 CEDAR RAPIDS, IOWA 52402  
 (319) 294-9424

284917-20

*SMB*

# SECTION CORNER CERTIFICATE

OF  
 LAND SURVEY MONUMENTS SITUATED IN SECTION 36, TOWNSHIP 85 NORTH,  
 RANGE 2 WEST, OF THE FIFTH PRINCIPAL MERIDIAN, JONES, COUNTY, IOWA.

PREVIOUSLY RECORDED IN BOOK \_\_\_\_\_ AT PAGE \_\_\_\_\_ .

FOR RECORDER'S USE

**REASON FOR PREPARING CERTIFICATE:**

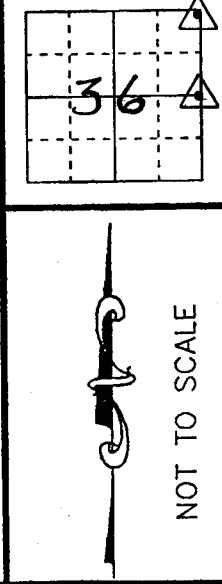
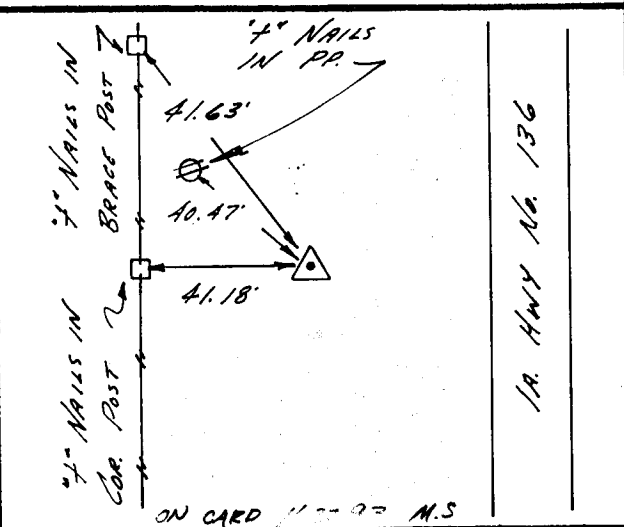
- A) THERE IS NO CERTIFICATE FOR THE CORNER ON FILE WITH THE RECORDER OF THE COUNTY IN WHICH THE CORNER IS LOCATED.
- B) CORNER POSITION DIFFERS FROM THAT SHOWN IN THE PUBLIC RECORDS OF THE COUNTY IN WHICH THE CORNER IS LOCATED.
- C) THE CORNER MONUMENT HAS BEEN REPLACED OR MODIFIED.
- D) THE REFERENCE TIES REFERRED TO IN AN EXISTING PUBLIC RECORD ARE INCORRECT.

**MONUMENT DESCRIPTION AND REMARKS :**

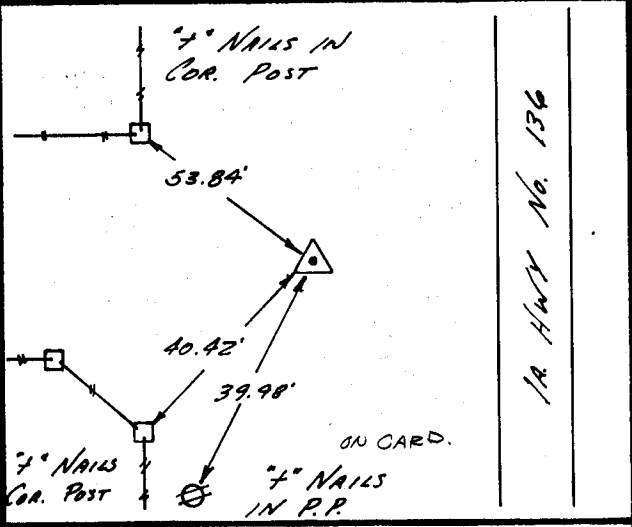
SET 5/8" REBAR @ NE COR IN SEC. 36-85-2  
 SET 5/8" REBAR @ E 1/4 COR IN SEC. 36-85-2

## RECOVERY TIE DRAWING

*NE Cor., Sec. 36-T85N-R2W*



*E 1/4 Cor., Sec. 36-T85N-R2W*



I, ROBERT D. MICKELSON, CERTIFY THAT THE CORNER LOCATION(S) SHOWN ON THIS RECORD WERE DETERMINED BY ME OR UNDER MY DIRECTION AND CONTROL AND THAT THIS U.S. PUBLIC LAND SURVEY MONUMENT RECORD IS CORRECT AND COMPLETE TO THE BEST OF MY KNOWLEDGE AND BELIEF.



*Robert D. Mickelson* 5-28-93  
 ROBERT D. MICKELSON L.S. NO 7036 DATE  
 MY BIENNIAL REGISTRATION EXPIRES DECEMBER 31, 1994.

ORIGINAL <input checked="" type="checkbox"/> GOVERNMENT CORNER <input checked="" type="checkbox"/> 5/8" TIE PIN SET <input type="checkbox"/> CENTERLINE <input type="checkbox"/> EXISTING FENCE LINE <input type="checkbox"/> R.O.W. LINE	SHEET TITLE: U.S. PUBLIC LAND SURVEY CORNER CERTIFICATE		MMS CONSULTANTS, INC. Iowa City, Iowa 319-351-8282			
	PROJECT TITLE: SECTION CORNER TIES					
DED MAS	KIC RDM	PPA RDM	DATE 5-27-93	SCALE NONE	FNO B 320	PNO PROJ 3475-001