

Instrument #: 2026-0968
 04/07/2026 10:20:54 AM Total Pages: 1
 2SC SECTION CORNER CERTIFICATE
 Recording Fee: \$7.00 Transfer Tax: \$0
 Sheri L. Jones, Recorder, Jones County Iowa



PREPARED BY: BRAD J. BURGER IOWA DEPARTMENT OF TRANSPORTATION 14117 ROUTE 52, DYERSVILLE, IOWA 52040 PHONE 563-875-2375

UNITED STATES PUBLIC LAND SURVEY CORNER CERTIFICATE

Land Survey Monuments situated in Section 30, Township 85N, Range 1W, of the Fifth Principal Meridian, Jones County, Iowa. Previously recorded in SEE NOTE in the Office of the County Recorder

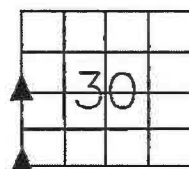
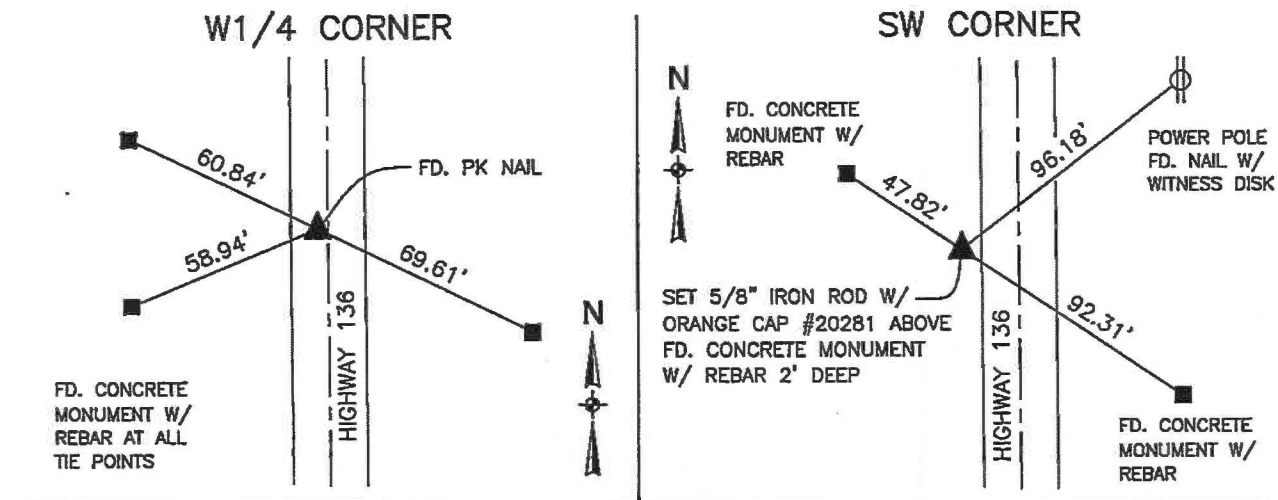
Monument Description and Remarks:

W1/4 CORNER - FD. PK NAIL

SW CORNER - SET 5/8" IRON ROD W/ ORANGE CAP #20281 ABOVE A FOUND CONCRETE MONUMENT W/ REBAR 2' DEEP

NOTE: THE SW CORNER WAS PREVIOUSLY RECORDED IN INSTRUMENT NUMBER 2004 3366 IN THE OFFICE OF THE JONES COUNTY RECORDER

PLAN VIEW



SEC. 30 TWP. 85N RANGE 1W

CORNERS TO BE INDEXED

W1/4 CORNER	30	85N	1W
SW CORNER	30	85N	1W



I hereby certify that this land surveying document was prepared and related survey work was performed by me or under my direct personal supervision and that I am a duly licensed Land Surveyor under the laws of the State of Iowa.

Brad J. Burger 4/6/2026
 Brad J. Burger Date

License number 20281
 My license renewal date is December 31, 2026
 Pages or Sheets covered by this seal: Sheet 1 of 1

2004 3366

FILED
RECORDERS OFFICE
JONES COUNTY IOWA

04 SEP -8 AM 10:53

MARIE KRUTZFIELD
RECORDER 7.00 Pd

Prepared by Wm. Burger Land Surveyors 510 3rd Street West Court, Worthington, Iowa Phone 563 - 855 2028

UNITED STATES PUBLIC LAND SURVEY CORNER CERTIFICATE

Land Survey Monuments situated in Section 30, Township 85N, Range 1W, of the Fifth Principal Meridian, Jones County, Iowa. Previously recorded in N/A in the Office of the County Recorder

Monument Description and Remarks: (No Corner Certificates found at the County Recorders Office)

NW CORNER SW1/4 SW1/4 - SET 1/2" IRON ROD W/ YELLOW LS CAP #12642 - SET ON LINE AND MIDWAY BETWEEN THE W1/4 CORNER AND THE SW CORNER

SW CORNER SW1/4 SW1/4 - FOUND 5/8" IRON ROD W/ NO CAP

PLAN VIEW

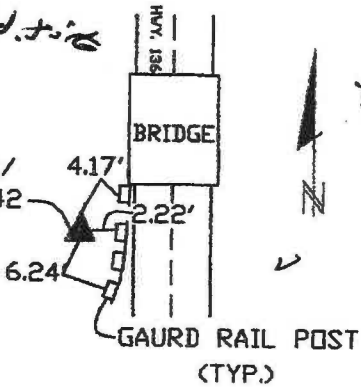
NW CORNER SW1/4 SW1/4

SW CORNER SW1/4 SW1/4

852366-090704.T12

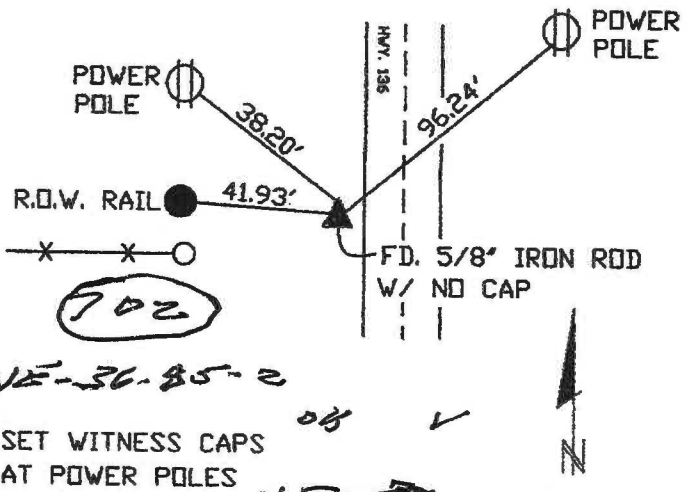
35130P-090704.T12

SET 1/2" IRON ROD W/
YELLOW LS CAP #12642



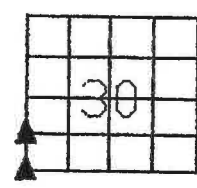
1552

SET WITNESS CAPS ON
TOP OF GAURD RAIL POSTS



NE-36-85-2

SET WITNESS CAPS
AT POWER POLES



SEC. 30 TWP. 85N RANGE 1W

CORNERS TO BE INDEXED

NW CORNER SW1/4 SW1/4	30	85N	1W
SW CORNER SW1/4 SW1/4	30	85N	1W



I hereby certify that this land surveying document was prepared and related survey work was performed by me or under my direct personal supervision and that I am a duly licensed Land Surveyor under the laws of the State of Iowa.

William H. Burger 9/3/04
William H. Burger Date

License number 12642
My license renewal date is December 31, 2004
Pages or Sheets covered by this seal Sheet 1 of 1

SECTION CORNER CERTIFICATE

OF
 LAND SURVEY MONUMENTS SITUATED IN SECTION 36, TOWNSHIP 85 NORTH,
 RANGE 2 WEST, OF THE FIFTH PRINCIPAL MERIDIAN, JONES, COUNTY, IOWA.

PREVIOUSLY RECORDED IN BOOK _____ AT PAGE _____ .

FOR RECORDER'S USE

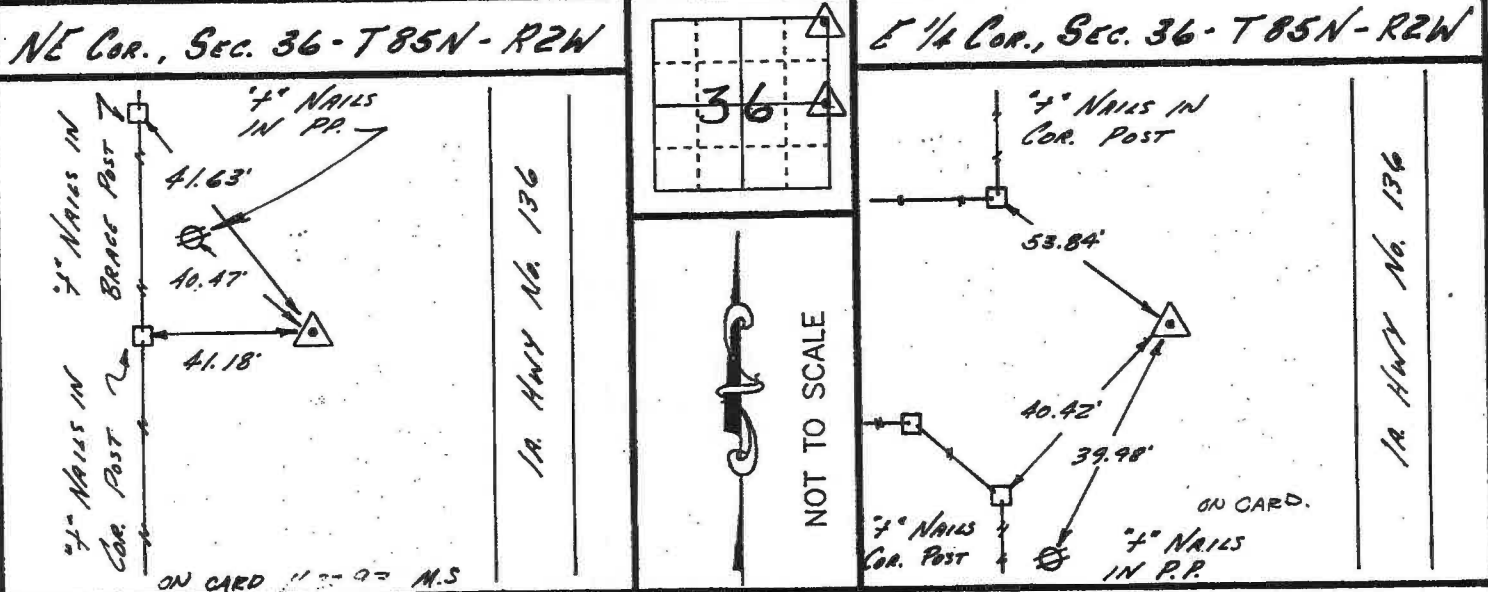
REASON FOR PREPARING CERTIFICATE:

- A) THERE IS NO CERTIFICATE FOR THE CORNER ON FILE WITH THE RECORDER OF THE COUNTY IN WHICH THE CORNER IS LOCATED.
- B) CORNER POSITION DIFFERS FROM THAT SHOWN IN THE PUBLIC RECORDS OF THE COUNTY IN WHICH THE CORNER IS LOCATED.
- C) THE CORNER MONUMENT HAS BEEN REPLACED OR MODIFIED.
- D) THE REFERENCE TIES REFERRED TO IN AN EXISTING PUBLIC RECORD ARE INCORRECT.

MONUMENT DESCRIPTION AND REMARKS :

SET 5/8" REBAR @ NE COR IN SEC. 36-85-2
 SET 5/8" REBAR @ E 1/4 COR IN SEC. 36-85-2

RECOVERY TIE DRAWING



I, ROBERT D. MICKELSON, CERTIFY THAT THE CORNER LOCATION(S) SHOWN ON THIS RECORD WERE DETERMINED BY ME OR UNDER MY DIRECTION AND CONTROL AND THAT THIS U.S. PUBLIC LAND SURVEY MONUMENT RECORD IS CORRECT AND COMPLETE TO THE BEST OF MY KNOWLEDGE AND BELIEF.



Robert D. Mickelson
 ROBERT D. MICKELSON L.S. NO 7036 DATE 5-28-93
 MY BIENNIAL REGISTRATION EXPIRES DECEMBER 31, 1994.

DZM/GML	<input checked="" type="checkbox"/> GOVERNMENT CORNER	SHEET TITLE: U.S. PUBLIC LAND SURVEY CORNER CERTIFICATE	MMS	MMS CONSULTANTS, INC.	
	<input type="checkbox"/> 5/8" TIE PIN SET	PROJECT TITLE: SECTION CORNER TIES		Iowa City, Iowa 319-351-8282	
	<input type="checkbox"/> CENTERLINE				
	<input type="checkbox"/> EXISTING FENCE LINE				
	<input type="checkbox"/> R.O.W. LINE				
	D W D MAS	K I C RDM	A P P RDM	D A T E 5-27-93	S C A L E NONE
				F N O B 320	P N O J 3,475-001