

FEE BOOK 2008 3548 12/1/2008 1:46 PM  
 REC FEES No Fee  
 PAGES: 1

Marie Krutzfield, Recorder  
 Jones County, Iowa

PREPARED BY  
 CLARENCE J. WALTON, JONES COUNTY ENGINEER'S OFFICE, 19501 HWY. 64, ANAMOSA, IOWA, 52205 (319) 462-3785

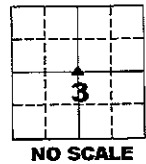
# UNITED STATES PUBLIC LAND SURVEY CORNER CERTIFICATE

LAND SURVEY MONUMENTS SITUATED IN SECTION 3, TOWNSHIP 85 NORTH,  
 RANGE 2 WEST OF THE 5TH PRINCIPAL MERIDIAN, JONES COUNTY, IOWA.

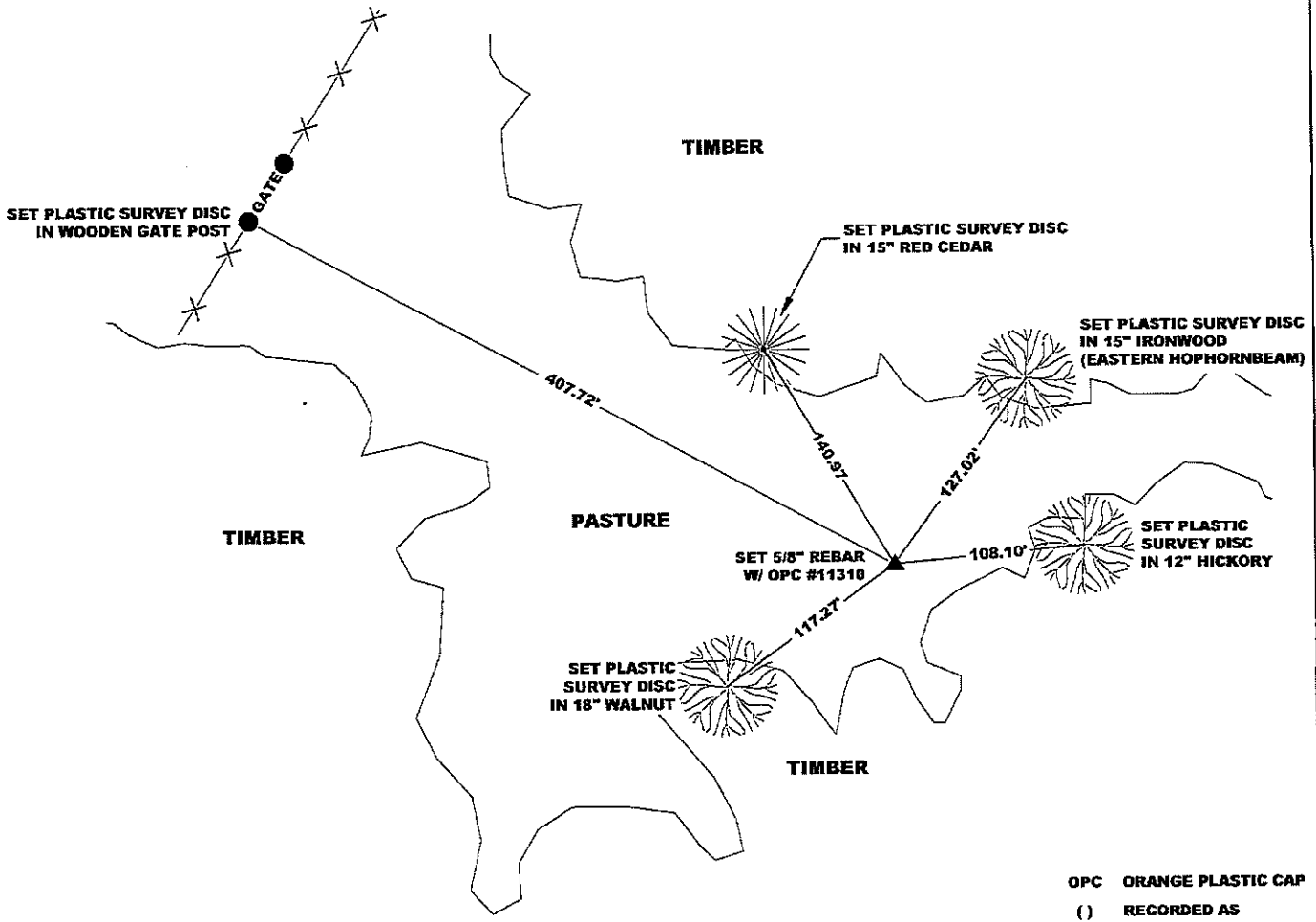
OFFICE FILE NO.

STATE PLANE COORDINATE  
 NAD 83 IOWA NORTH  
 N 3546295.21  
 E 5581456.71

CORNER SECTION TOWNSHIP RANGE  
 CENTER 3 T85N R2W



NOTE:  
 THE STATE PLANE COORDINATE AS INDICATED IS FOR CONVENIENCE ONLY.  
 THE TIES AS SHOWN SHOULD BE USED TO REPLACE THE CORNER, IF  
 DESTROYED



PREVIOUSLY RECORDED IN RECORDER'S DOCUMENT N/A

MONUMENT DESCRIPTION AND HOW ESTABLISHED SET 5/8" REBAR W/ ORANGE PLASTIC CAP NUMBERED 11310 AT INTERSECTION OF LINES FROM  
 OPPOSING QUARTER CORNERS. ALSO SET STEEL FENCE POST WITH "SURVEY MARKER" SIGN AS A WITNESS TO CORNER.

FIELD BOOK 376, PAGE 152. DATE OF SURVEY: 11/13/08



I hereby certify that this land surveying document  
 and the related survey work was performed by me  
 or under my direct personal supervision and that  
 I am a duly registered Land Surveyor under the laws  
 of the State of Iowa.  
 Signed:  
*Clarence J. Walton* 12/1/08  
 Clarence J. Walton, L.S.  
 My Registration Renewal Date is December 31, 2009  
 Iowa License Number 11310  
 Pages or sheets covered by this seal: 1 of 1.

- A. THERE IS NO CERTIFICATE FOR THE CORNER ON FILE WITH THE RECORDER OF THE COUNTY IN WHICH THE CORNER IS LOCATED.
- B. THE CORNER MONUMENT HAS BEEN REPLACED OR MODIFIED.
- C. THE SURVEYOR IN RESPONSIBLE CHARGE OF THE LAND SURVEYING ACCEPTS A CORNER POSITION THAT DIFFERS FROM THAT SHOWN IN THE PUBLIC RECORDS OF THE COUNTY IN WHICH THE CORNER IS LOCATED.
- D. THE REFERENCE TIES REFERRED TO IN AN EXISTING PUBLIC RECORD NO LONGER EXIST.

CORNERS TO BE INDEXED

CORNER	SECTION	TOWNSHIP	RANGE
CENTER	3	85N	2W

JONES COUNTY ENGINEER'S OFFICE



19501 HWY. 64, ANAMOSA, IOWA 52205  
 (319) 462-3785