

PREPARED BY  
 CLARENCE J. WALTON, JONES COUNTY ENGINEER'S OFFICE, 19501 HWY. 64, ANAMOSA, IOWA, 52205 (319) 462-3785

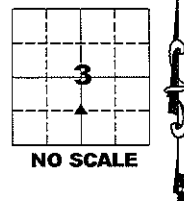
# UNITED STATES PUBLIC LAND SURVEY CORNER CERTIFICATE

LAND SURVEY MONUMENTS SITUATED IN SECTION 3, TOWNSHIP 85 NORTH,  
 RANGE 2 WEST OF THE 5TH PRINCIPAL MERIDIAN, JONES COUNTY, IOWA.

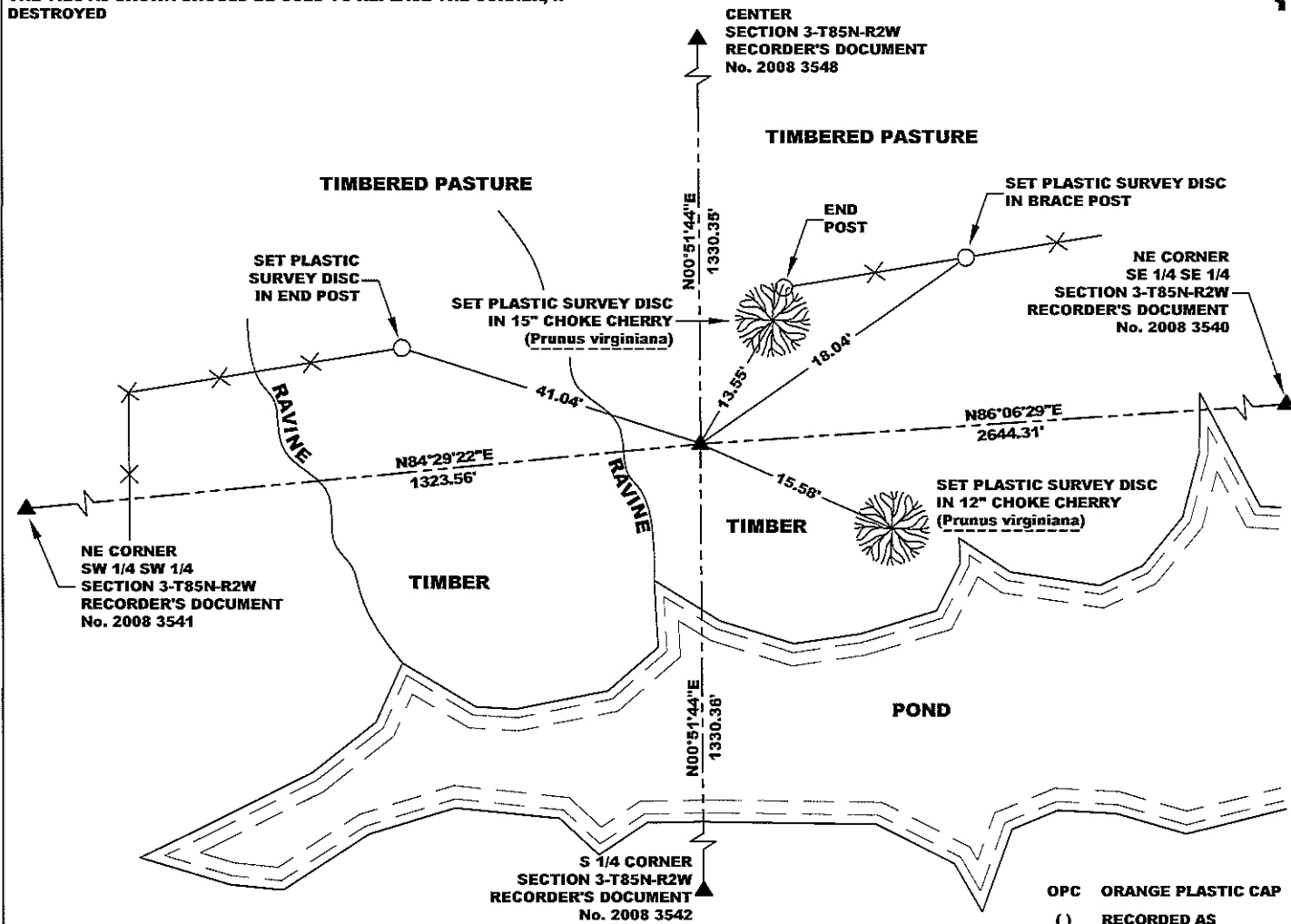
**OFFICE FILE NO.**

STATE PLANE COORDINATE  
 NAD 83 IOWA NORTH  
 N 3544965.00  
 E 5581476.73

CORNER SECTION TOWNSHIP RANGE  
 NE CORNER 3 T85N R2W  
 SE 1/4 SW 1/4

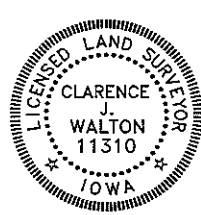


NOTE:  
 THE STATE PLANE COORDINATE AS INDICATED IS FOR CONVENIENCE ONLY.  
 THE TIES AS SHOWN SHOULD BE USED TO REPLACE THE CORNER, IF  
 DESTROYED



PREVIOUSLY RECORDED IN RECORDER'S DOCUMENT N/A  
 MONUMENT DESCRIPTION AND HOW ESTABLISHED SET 5/8" REBAR W/ ORANGE PLASTIC CAP #11310 EQUIDISTANT FROM AND ON LINE BETWEEN  
 THE CENTER OF SECTION 3-T85N-R2W AND THE S 1/4 CORNER OF SAID SECTION 3. ALSO SET "SURVEY MARKER" SIGN AS A WITNESS POST NEAR CORNER.

FIELD BOOK 376, PAGE 148. DATE OF SURVEY: 3/17/09



I hereby certify that this land surveying document  
 and the related survey work was performed by me  
 or under my direct personal supervision and that  
 I am a duly registered Land Surveyor under the laws  
 of the State of Iowa.  
 Signed: *Clarence J. Walton* 3/19/09  
 Clarence J. Walton, L.S.  
 My Registration Renewal Date is December 31, 2009  
 Iowa License Number 11310  
 Pages or sheets covered by this seal: 1 of 1.

- A. THERE IS NO CERTIFICATE FOR THE CORNER ON FILE WITH THE RECORDER OF THE COUNTY IN WHICH THE CORNER IS LOCATED.
- B. THE CORNER MONUMENT HAS BEEN REPLACED OR MODIFIED.
- C. THE SURVEYOR IN RESPONSIBLE CHARGE OF THE LAND SURVEYING ACCEPTS A CORNER POSITION THAT DIFFERS FROM THAT SHOWN IN THE PUBLIC RECORDS OF THE COUNTY IN WHICH THE CORNER IS LOCATED.
- D. THE REFERENCE TIES REFERRED TO IN AN EXISTING PUBLIC RECORD NO LONGER EXIST.

CORNER	SECTION	TOWNSHIP	RANGE
NE CORNER SE 1/4 SW 1/4	3	85N	2W
SE CORNER NE 1/4 SW 1/4	3	85N	2W
SW CORNER NW 1/4 SE 1/4	3	85N	2W
NW CORNER SW 1/4 SE 1/4	3	85N	2W

**JONES COUNTY ENGINEER'S OFFICE**



19501 HWY. 64, ANAMOSA, IOWA 52205  
 (319) 462-3785