

Instrument #: 2024-0918  
 04/29/2024 08:53:20 AM Total Pages: 1  
 ZSC SECTION CORNER CERTIFICATE  
 Recording Fee: \$7.00 Transfer Tax: \$0  
 Sheri L. Jones, Recorder, Jones County Iowa



PREPARED BY: RANDALL L. RATTENBORG 105 WEST MAIN STREET MANCHESTER, IA 52057, 563-927-2434

# UNITED STATES PUBLIC LAND SURVEY CORNER CERTIFICATE

Land Survey Monuments situated in Section 34, Township 86 North, Range 2 West of the Fifth Principal Meridian,  
Jones County, Iowa.

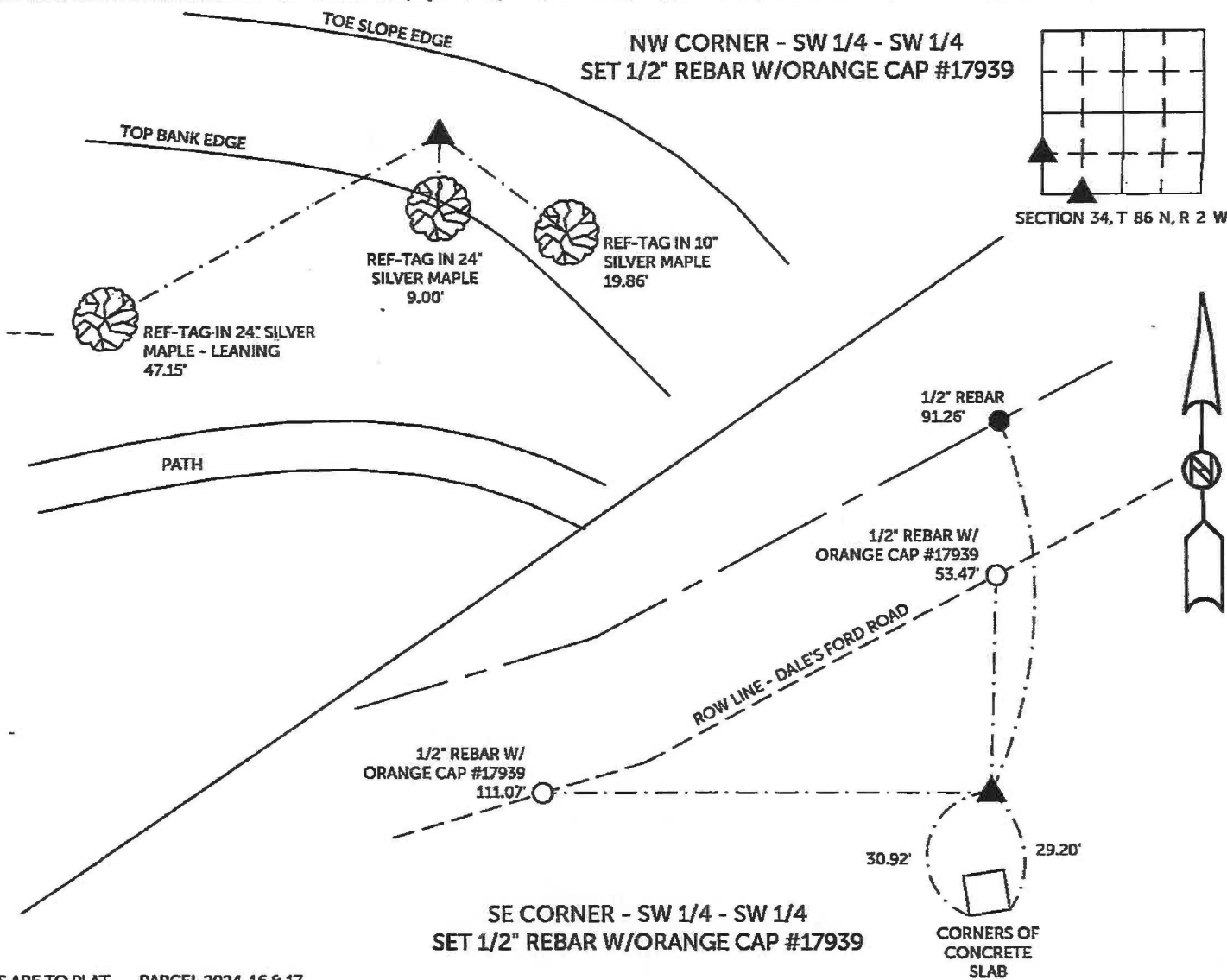
Previously recorded in County Recorder's Office in SEE DESCRIPTIONS  
(book, page, document number, etc.)

NW CORNER SW 1/4 - SW 1/4, Set 1/2" rebar w/orange cap #17939 at the intersection of the line between the SW Corner and NW Corner of Section 34 and the westerly extension of the line from the NE Corner SE 1/4 - SW 1/4 through the NE CORNER SW 1/4 - SW 1/4.

SE CORNER SW 1/4 - SW 1/4, Set 1/2" rebar w/orange cap #17939 at the intersection of the township line and a southerly extension of the line from the NE Corner SW 1/4 - SW 1/4 through the southwest corner of Parcel 2016-64, as recorded in Instrument 2016-3688.

## PLAN VIEW

(Show a minimum of three reference ties to durable physical objects, relevant monuments and physical conditions that will enable recovery of the corner.)



TIES ARE TO PLAT PARCEL 2024-16 & 17  
 IN SECTION 34, T 86 N, R 2 W

BURRINGTON GROUP, INC. PROJECT NO. 23-144

I HEREBY CERTIFY THAT THIS LAND SURVEYING DOCUMENT WAS PREPARED AND THE RELATED SURVEY WORK WAS PERFORMED BY ME OR UNDER MY DIRECT PERSONAL SUPERVISION AND THAT I AM A DULY LICENSED PROFESSIONAL LAND SURVEYOR UNDER THE LAWS OF THE STATE OF IOWA.

*[Signature]* 4/26/2024  
 Randall L. Rattenborg, P.L.S. License #17939 Date  
 My license renewal date is December 31, 2025

List Corners to be Indexed: Section Township Range  
 NW CORNER SW 1/4 - SW 1/4 34 T 86N R 2 W  
 SE CORNER SW 1/4 - SW 1/4

SEAL COVERS THIS SHEET ONLY



**BURRINGTON GROUP, INC.**  
 Civil Engineering | Land Surveying  
 105 W. Main Street Manchester, Iowa 52057