

FEE BOOK 2008 3547 12/1/2008 1:45 PM  
 REC FEES No Fee  
 PAGES: 1

Marie Krutzfield, Recorder  
 Jones County, Iowa

PREPARED BY  
 CLARENCE J. WALTON, JONES COUNTY ENGINEER'S OFFICE, 19501 HWY. 64, ANAMOSA, IOWA, 52205 (319) 462-3785

# UNITED STATES PUBLIC LAND SURVEY CORNER CERTIFICATE

LAND SURVEY MONUMENTS SITUATED IN SECTION 34, TOWNSHIP 86 NORTH,  
 RANGE 2 WEST OF THE 5TH PRINCIPAL MERIDIAN, JONES COUNTY, IOWA.

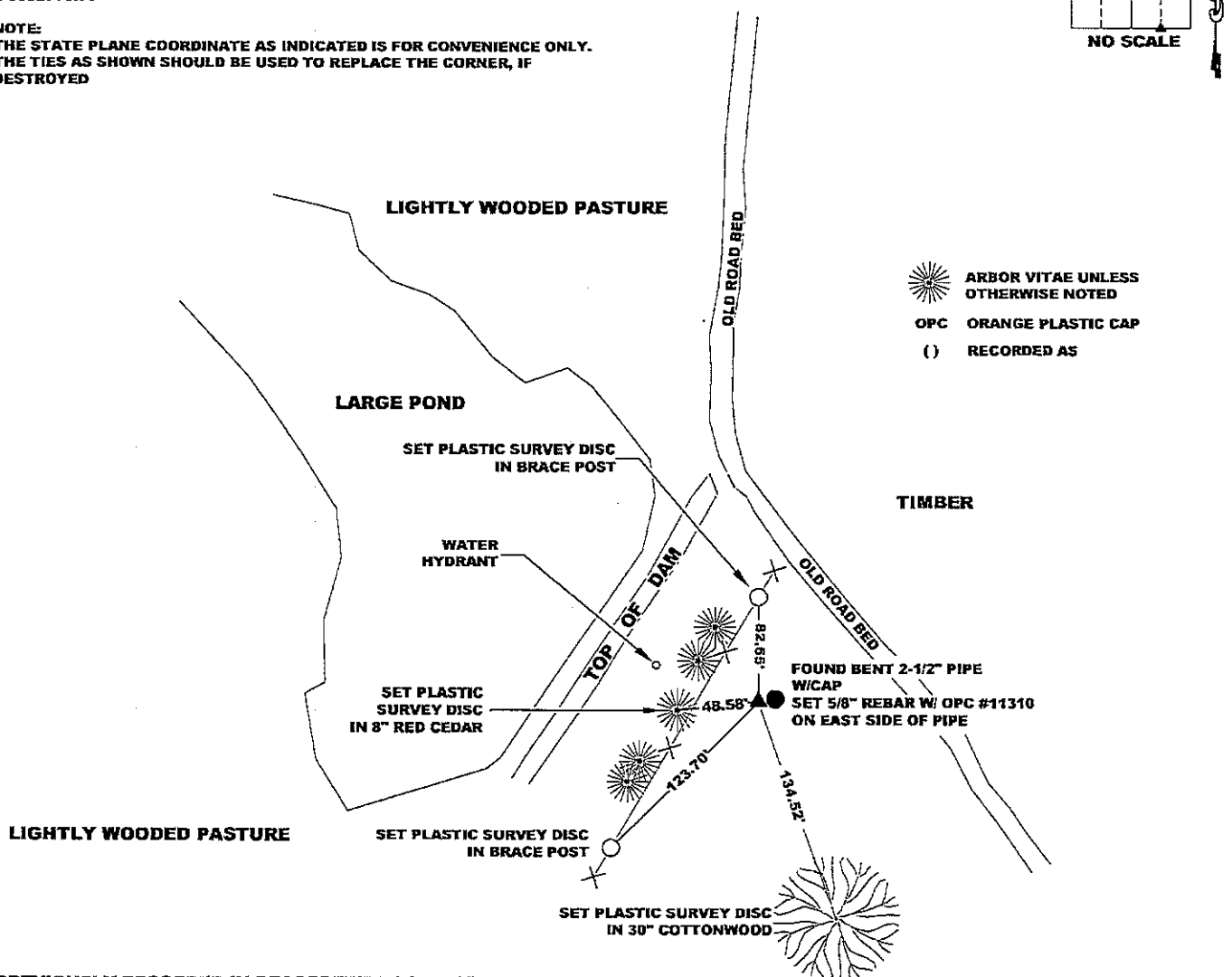
**OFFICE FILE NO.**

STATE PLANE COORDINATE  
 NAD 83 IOWA NORTH  
 N 3548594.52  
 E 5582770.76

CORNER SECTION TOWNSHIP RANGE  
 SW CORNER 34 86N 2W  
 SE 1/4 SE 1/4



NOTE:  
 THE STATE PLANE COORDINATE AS INDICATED IS FOR CONVENIENCE ONLY.  
 THE TIES AS SHOWN SHOULD BE USED TO REPLACE THE CORNER, IF  
 DESTROYED



PREVIOUSLY RECORDED IN RECORDER'S DOCUMENT N/A  
 MONUMENT DESCRIPTION AND HOW ESTABLISHED FOUND BENT 2-1/2" PIPE WITH DISC STAMPED WITH SECTION CORNER INFORMATION. SET STEEL FENCE POST WITH "SURVEY MARKER" SIGN AS A WITNESS POST. ALSO SET 5/8" REBAR W/OPC #11310 ON EAST SIDE OF PIPE. FROM SURVEY RECORDED IN PLAT BOOK 1, PAGE 72 IN THE JONES COUNTY, IOWA RECORDER'S OFFICE.

FIELD BOOK 376, PAGE 150. DATE OF SURVEY: 11/14/08



I hereby certify that this land surveying document and the related survey work was performed by me or under my direct personal supervision and that I am a duly registered Land Surveyor under the laws of the State of Iowa.  
 Signed: *Clarence J. Walton* 12/1/08  
 Clarence J. Walton, L.S.  
 My Registration Renewal Date is December 31, 2009  
 Iowa License Number 11310  
 Pages or sheets covered by this seal: 1 of 1.

- A. THERE IS NO CERTIFICATE FOR THE CORNER ON FILE WITH THE RECORDER OF THE COUNTY IN WHICH THE CORNER IS LOCATED.
- B. THE CORNER MONUMENT HAS BEEN REPLACED OR MODIFIED.
- C. THE SURVEYOR IN RESPONSIBLE CHARGE OF THE LAND SURVEYING ACCEPTS A CORNER POSITION THAT DIFFERS FROM THAT SHOWN IN THE PUBLIC RECORDS OF THE COUNTY IN WHICH THE CORNER IS LOCATED.
- D. THE REFERENCE TIES REFERRED TO IN AN EXISTING PUBLIC RECORD NO LONGER EXIST.

CORNERS TO BE INDEXED			
CORNER	SECTION	TOWNSHIP	RANGE
SW CORNER SE 1/4 SE 1/4	34	86N	2W
SE CORNER SW 1/4 SE 1/4	34	86N	2W

**JONES COUNTY ENGINEER'S OFFICE**



19501 HWY. 64, ANAMOSA, IOWA 52205  
 (319) 462-3785