

# THIS IS NOT A CERTIFICATION

JONES COUNTY ENGINEER'S OFFICE, 19501 HWY. 64, ANAMOSA, IOWA, 52205 (319)462-3785

## UNITED STATES PUBLIC LAND SURVEY CORNER CERTIFICATE

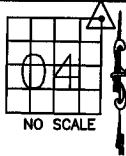
LAND SURVEY MONUMENTS SITUATED IN SECTION 04, TOWNSHIP 85  
NORTH, RANGE 2 WEST OF THE 5TH P.M., JONES COUNTY, IOWA

### CORNERS TO BE INDEXED

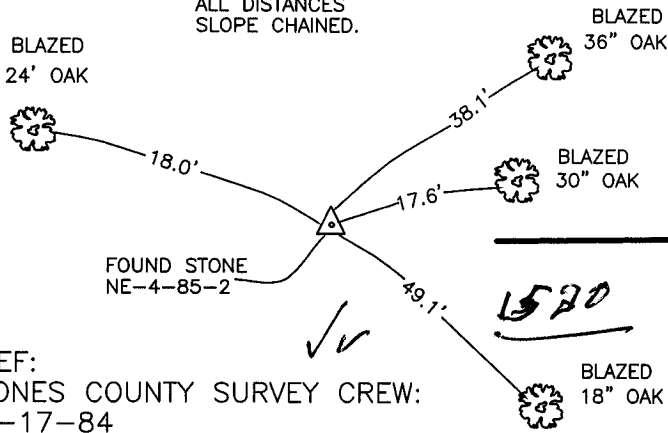
CORNER SECTION TOWNSHIP RANGE  
NORTHEAST 04 85N 2W

OFFICE FILE NO.

85204e\_111204.tif



NOTE:  
ALL DISTANCES  
SLOPE CHAINED.



REF:  
JONES COUNTY SURVEY CREW:  
3-17-84

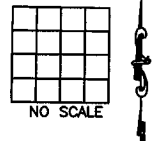
PREVIOUSLY RECORDED IN BOOK \_\_\_\_\_, PAGE \_\_\_\_\_  
MONUMENT DESCRIPTION AND HOW ESTABLISHED FOUND

STONE. (SIZE OR TYPE NOT INDICATED) TIES AS INDICATED. NORTHEAST  
CORNER SECTION 4, TOWNSHIP 85 NORTH, RANGE 2 WEST OF THE  
5TH PRINCIPAL MERIDIAN, JONES COUNTY, IOWA.

### CORNERS TO BE INDEXED

CORNER SECTION TOWNSHIP RANGE

OFFICE FILE NO.



CORNER TIES FOR THE SOUTHWEST CORNER OF  
SECTION 34, T86N, R2W (2000-0199) FILED BY  
BRAIN ENGINEERING INDICATES FINDING A 3'X6'  
STONE WEST OF NORTH-SOUTH DRIVEWAY.

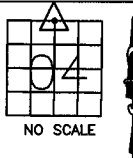
PREVIOUSLY RECORDED IN BOOK \_\_\_\_\_, PAGE \_\_\_\_\_  
MONUMENT DESCRIPTION AND HOW ESTABLISHED \_\_\_\_\_

### CORNERS TO BE INDEXED

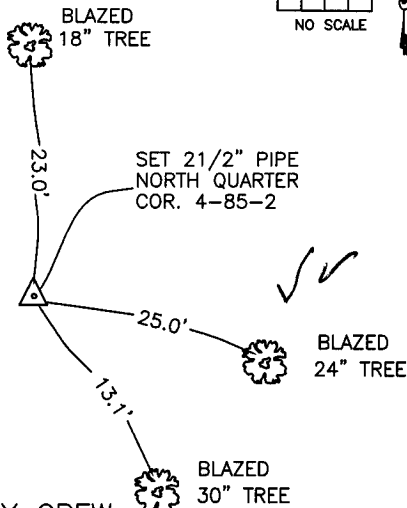
CORNER SECTION TOWNSHIP RANGE  
N-QUARTER 04 85N 2W

OFFICE FILE NO.

85204c\_111204.tif



NOTE:  
ALL DISTANCES  
SLOPE CHAINED.



REF:  
JONES COUNTY SURVEY CREW:  
3-17-84

### CORNERS TO BE INDEXED

CORNER SECTION TOWNSHIP RANGE

OFFICE FILE NO.

