

2000 0199
 FILED
 RECORDERS OFFICE
 JONES COUNTY IOWA

00 JAN 18 PM 12:14

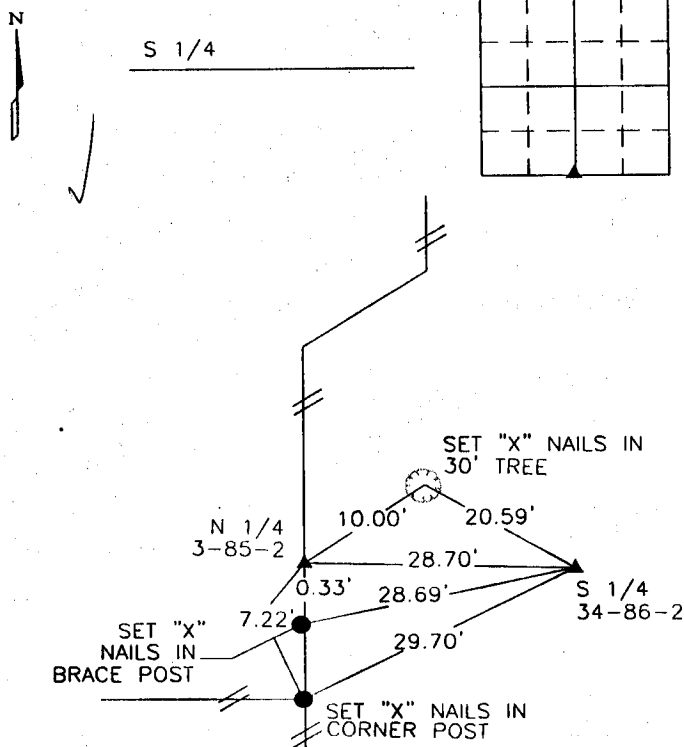
MARIE KRUTZFIELD
 RECORDER 6.00 pcd

CLARENCE J. WALTON, BRAIN ENGINEERING, INC., 777 10TH STREET, MARION, IOWA 52302 PH. (319) 373-1318

UNITED STATES PUBLIC LAND SURVEY CORNER CERTIFICATE

LAND SURVEY MONUMENTS SITUATED IN SECTION 34, TOWNSHIP 86 NORTH
 RANGE 2 WEST OF THE 5TH P.M., JONES COUNTY, IOWA.

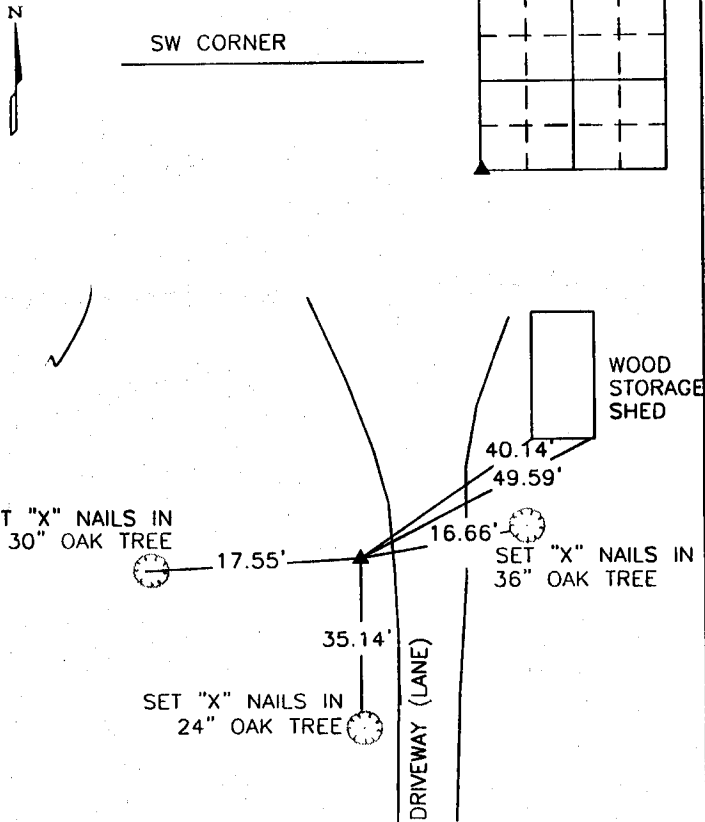
NO SCALE



PREVIOUSLY RECORDED IN BOOK _____ PAGE _____

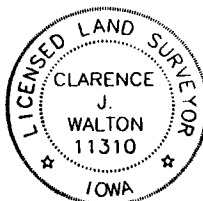
MONUMENT DESCRIPTION AND HOW ESTABLISHED _____
 FOUND 1/2" REBAR WITH RED CAP #8295

NO SCALE



PREVIOUSLY RECORDED IN BOOK _____ PAGE _____

MONUMENT DESCRIPTION AND HOW ESTABLISHED _____
 FOUND 3' X 6' STONE.



I hereby certify that this land surveying document and the related survey work was performed by me or under my direct personal supervision and that I am a duly licensed Land Surveyor under the laws of the State of Iowa.

Signed *Clarence J. Walton* Date 01/14/2000
 Clarence J. Walton, L.S.
 My License Renewal Date Is December 31, 2001
 License Number 11310
 Pages or sheets covered by this seal: _____ PAGES

CORNERS TO BE INDEXED			
CORNER	SECTION	TOWNSHIP	RANGE
S 1/4	34	T86N	R2W
SW CORNER	34	T86N	R2W

BRAIN ENGINEERING, INC.
 777 10TH STREET
 MARION, IOWA 52302
 (319) 373-1318

25599-10

THIS IS NOT A CERTIFICATION

JONES COUNTY ENGINEER'S OFFICE, 19501 HWY. 64, ANAMOSA, IOWA, 52205 (319)462-3785

UNITED STATES PUBLIC LAND SURVEY CORNER CERTIFICATE

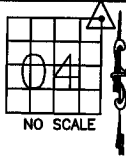
LAND SURVEY MONUMENTS SITUATED IN SECTION 04, TOWNSHIP 85
NORTH, RANGE 2 WEST OF THE 5TH P.M., JONES COUNTY, IOWA

CORNERS TO BE INDEXED

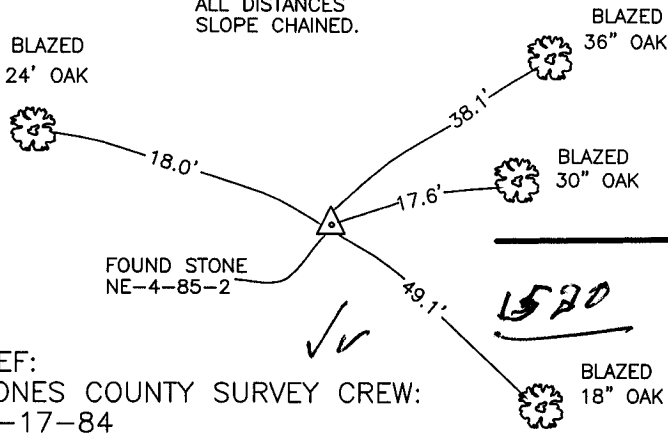
CORNER SECTION TOWNSHIP RANGE
NORTHEAST 04 85N 2W

OFFICE FILE NO.

85204e_111204.tif



NOTE:
ALL DISTANCES
SLOPE CHAINED.



REF:
JONES COUNTY SURVEY CREW:
3-17-84

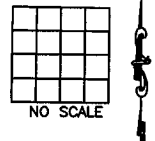
PREVIOUSLY RECORDED IN BOOK _____, PAGE _____
MONUMENT DESCRIPTION AND HOW ESTABLISHED FOUND

STONE. (SIZE OR TYPE NOT INDICATED) TIES AS INDICATED. NORTHEAST
CORNER SECTION 4, TOWNSHIP 85 NORTH, RANGE 2 WEST OF THE
5TH PRINCIPAL MERIDIAN, JONES COUNTY, IOWA.

CORNERS TO BE INDEXED

CORNER SECTION TOWNSHIP RANGE

OFFICE FILE NO.



CORNER TIES FOR THE SOUTHWEST CORNER OF
SECTION 34, T86N, R2W (2000-0199) FILED BY
BRAIN ENGINEERING INDICATES FINDING A 3'X6'
STONE WEST OF NORTH-SOUTH DRIVEWAY.

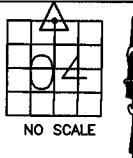
PREVIOUSLY RECORDED IN BOOK _____, PAGE _____
MONUMENT DESCRIPTION AND HOW ESTABLISHED _____

CORNERS TO BE INDEXED

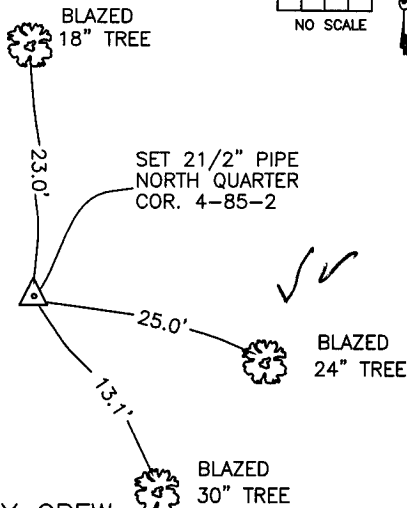
CORNER SECTION TOWNSHIP RANGE
N-QUARTER 04 85N 2W

OFFICE FILE NO.

85204c_111204.tif



NOTE:
ALL DISTANCES
SLOPE CHAINED.



REF:
JONES COUNTY SURVEY CREW:
3-17-84

CORNERS TO BE INDEXED

CORNER SECTION TOWNSHIP RANGE

OFFICE FILE NO.

